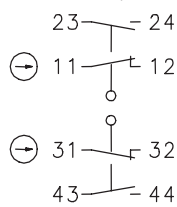


Rope pull switch Series SI2

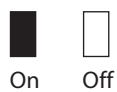
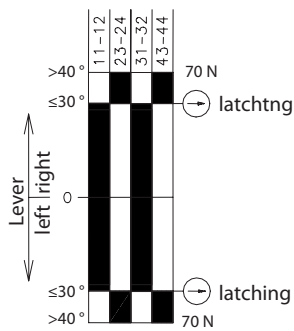
Description **SI2-U2Z AK R-RAST MLED**

Article number **G121000032**

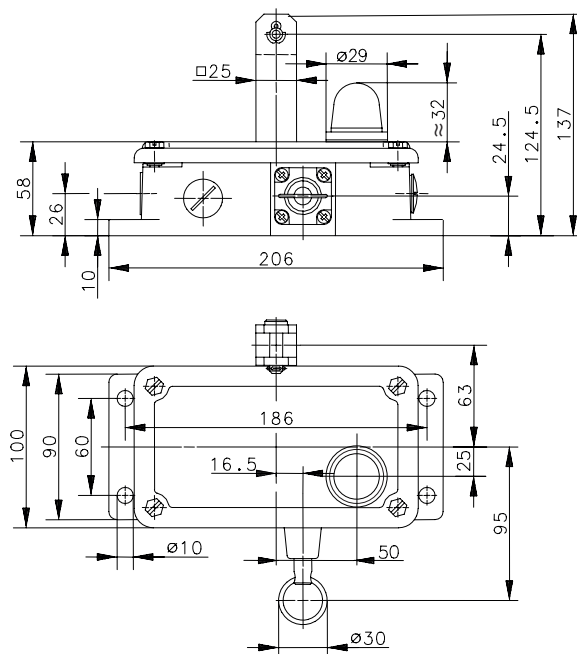
Operating symbol



Operating diagram



Tolerance:
Operating point $\pm 5^\circ$
Actuating force $\pm 15\%$
Latching according to DIN EN ISO 13850



Electrical Data switch

Rated insulation voltage	U_i	400 V AC
Conv. thermal current	I_{the}	10 A
Rated operational voltage	U_e	240 V
Utilization category		AC-15, U_e/I_e 240 V / 3 A
Positive opening NC contact	\rightarrow	acc. to IEC/EN 60947-5-1, Annex K
Short-circuit protective device		Fuse 10 A gG
Protection class		I

Mechanical data switch	
Enclosure	Gray iron
Cover	Gray iron
Actuator	Lever (St)
Ambient air temperature	-20 °C to +50 °C
Contact type	2 NC, 2 NO (Zb)
Reset facility	Rotate pulling the key-ring ($\geq 50N$)
Mechanical life	1 x 10 ⁶ operating cycles
Switching frequency	≤ 10 / min.
Assembly	4 x M8
Connection	8 screw terminals (M3,5)
Conductor cross-sections	Solid: 0,5 ... 1,5 mm ² Litz wire with ferrules: 0,5 ... 1,5 mm ²
Cable entrance	3 x M20 x 1,5
Weight	$\approx 4,33$ kg
Installation position	operator definable
Protection type	IP65 acc. to IEC/EN 60529

Mechanical/ Electrical Data LED-permanent light EM 24VDC RD, WERMA	
Operating voltage	24 V
Operating voltage type	DC
Operating voltage tolerance	± 10 %
Rated operational voltage	24 V DC
Rated operational current	45 mA
Rated inrush current	500 mA
Connection	wires (tinned) stranded wires with ferrules
Cable length	115 mm
Light source	LED
Light colour	Red
Optical signal pattern	Duration

ID for safety engineering	
B10d	2 x 10 ⁶ cycles

Standards	
	DIN EN 60947-5-1
	DIN EN ISO 13849-1
	DIN EN ISO 13850

EU Conformity	
	acc. to directive 2014/35/EU (Low-Voltage-Directive)

Approvals	
	cCSA _{US} A300
	UL
	CCC

Notes

The degree of protection (IP code) specified applies solely to a property closed cover and the use of an equivalent cable gland with adequate cable.