

# Cable lugs and tools Addition catalogue 2015/2016

Let's connect.

Connectivity and electrical installation



**Weidmüller** 

# Cable lugs and tools

## Addition catalogue 6a

---

### Cable lugs and tools

Cable lugs and insulated connectors

---

Crimping tools

---



# Cable lugs and insulated connectors

<b>Cable lugs and insulated connectors</b>	Technical data / general notes	A.2
	Tubular cable lugs, copper, euro-series	A.5
	Tubular cable lugs with angle, copper, euro-series	A.8
	Joint connector, copper, euro-series	A.11
	Crimp cable lugs, copper, DIN 46235	A.13
	Tubular compression connectors, copper, DIN 46267 part 1	A.15
	Terminals ring and fork-type, noninsulated	A.17
	Pin cable lugs DIN 46230, noninsulated	A.20
	Parallel connectors and joint connector, noninsulated	A.21
	Terminals ring type	A.23
	Terminals fork type	A.24
	Pin cable lugs / joint connector	A.25
	Parallel connectors / closed end connectors	A.26
	Cable-lug sleeves	A.27
	Cable lug connector / piggy back disconnectors	A.28
	Flag female disconnectors / circular plug	A.29
	Round-plug sleeves	A.30
	Hook-type cable lug	A.31

# Cable lugs and insulated connector

## Technical data / general information

### Temperature resistance

Copper-cable lugs and -connectors without insulation	up to max. 120°C (according to DIN 46 234)
Copper-cable lugs and -connectors with pa-insulation	-55 °C to +120 °C
Copper-cable lugs and -connectors with PC-insulation	-40 °C to +120 °C
Butt-connectors with shrink insulation	-10 °C to +105 °C
Terminals with PVC (polyvinyl chloride) insulation	-10 °C to +70 °C
Terminals with PC (polycarbonate=makrolon) insulation	-40 °C to +100 °C
Terminals with PA (polyamide)-insulation	-55 °C to +100 °C
Brass terminals, tin plated, without insulation	-55 °C to +100 °C

### Conductor cross section comparison

comparable ISO-cross section in (mm <sup>2</sup> )	AWG/ MCM	
	AWG	cross section (mm <sup>2</sup> )
0.14	26	0.128
0.2	24	0.205
0.34	22	0.325
0.5	20	0.519
0.75	18	0.823
1	-	-
1.5	16	1.31
2.5	14	2.08
4	12	3.31
6	10	5.27
10	8	8.35
16	6	13.3
25	4	21.2
35	2	33.6
-	1	42.4
50	0	53.4
70	00	67.5
95	000	85.0
-	0000	107.2
120	250 MCM	127
150	300 MCM	152
185	350 MCM	177
240	500 MCM	253
300	600 MCM	304

### Silicone and halogen concentration of insulated connecting material

The following chart shows the concentration of silicone and halogen of insulated connection material delivered by us:

Article description	free of silicone	free of halogen
Terminals, ring type	yes	yes
Terminals, fork type	yes	yes
Pin cable lugs	yes	yes
Joint connector	yes	yes
Parallel-connectors	yes	yes
Joint connector heat shrink insulation	yes	yes
Closed end connectors	yes	yes
Cable-lug sleeves and cable-lug sleeves PVC - insulated	yes	no
Cable-lug sleeves and cable-lug sleeves PC - insulated	yes	yes
Cable-lug sleeves tin-bronze PA - insulated	yes	yes
Cable-lug sleeves , fully insulated	yes	yes
Piggy back disconnectors PVC - insulated	yes	no
Piggy back disconnectors PC - insulated	yes	yes
Flag female disconnectors	yes	yes
Round-plug sleeves PVC - insulated	yes	no
Circular plug PVC - insulated	yes	no
Circular plug PC - insulated	yes	yes
Round-plug sleeves and circular plug, fully insulated	yes	yes

### Colour of insulation

cross section mm <sup>2</sup>	colour
0.1 - 0.5	yellow
0.5 - 1	red
1.5 - 2.5	blue
4 - 6	yellow
10	red
16	blue
25	yellow
35	red
50	blue
70	yellow
95	red
120	blue
150	yellow

### Electrical characteristics

Maximum allowable current load of cable lugs and connectors  
in conjunction with insulated conductors (at ambient temperature +30 °C)

nominal cross section (mm <sup>2</sup> )	Single cor cable	Multicore cables + cords, excl. home- and portable apparatus	Multicore heavy duty rubber cables
	- rubber insulated - PVC insulated - TPE insulated - heat resistant	- rubber insulated - PVC insulated - TPE insulated - heat resistant	min. 0.6 / 1kV
	Cu (A)	Cu (A)	Cu (A)
0.75	15	12	-
1	19	15	-
1.5	24	18	23
2.5	32	26	30
4	42	34	41
6	54	44	53
10	73	61	74
16	98	82	99
25	129	108	131
35	158	135	162
50	198	168	202
70	245	207	250
95	292	250	301
120	344	292	-
150	391	335	-
185	448	382	-
240	528	453	-
300	608	523	-
sources of current ratings:	DIN VDE 0298-4. 2003-08 Table 11, colonne 2	DIN VDE 0298-4. 2003-08 Table 11, colonne 5	DIN VDE 0298-4. 2003-08 Table 15, colonne 4+2

#### Note:

Design of these tables deviates from VDE 0298-4 design.  
In case of doubt, appliance of the current issue of the DIN VDE 0298-4 is obligatory.

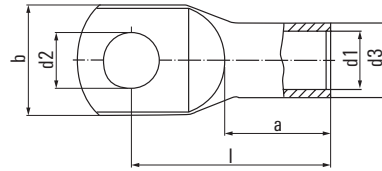
Above Table values have to be taken into consideration of further applicable converting / derating factors:

- other ambient temperatures: DIN VDE 0298-4
- pay attention to the maximum electric current of the used equipment
- pay attention to the maximum current load of the used cable under consideration of the laying procedure

# Tubular cable lugs and connectors, copper euro-series

A





**Tubular cable lugs 0.5 – 25 mm<sup>2</sup>, euro-series**

**Technical data**

Material: Cu according to DIN EN 13600  
 Surface: tin plated  
 Approvals:



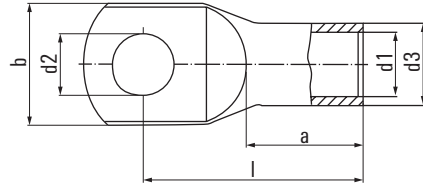
**Ordering data**

Cross-section mm <sup>2</sup>	flat hole M	d1	d3	dimensions in mm				Qty. (pcs.)	Order No.	Tool recommendation	
				d2	b	l	a				
0.5 – 0.75	3	1.4	3	3.2	6.5	12.5	6	100	1495010000*	HTN 21	
	4			4.3	8.5	14		100	1495020000*		
	5			5.3	10	15		100	1495030000*		
1.0 – 1.5	3	1.9	3.9	3.2	6.5	14	6	100	1495040000*		
	4			4.3	8.5	15		100	1495050000*		
	5			5.3	10	16		100	1495070000*		
	6			6.4	11	18		100	1495080000*		
2.5	4	2.4	4.4	4.3	8.5	15	6.5	100	1495090000*		
	5			5.3	10	16		100	1495100000*		
	6			6.4	11	18		100	1495110000*		
	8			8.4	13	20		100	1495120000*		
4	4	3	5	4.3	8.5	17	8	100	1495130000*		
	5			5.3	10	18		100	1495140000*		
	6			6.4	11	20		100	1495150000*		
	8			8.4	14	22		100	1495170000*		
6	4	3.5	6.5	4.3	10	19	9	100	1497150000	PZ RK 6/70	
	5			5.3	10	20		100	1497170000		
	6			6.4	11	21.5		100	1497180000		
	8			8.4	15	24		100	1497190000		
	10			10.5	18	26		100	1497200000		
	12			13	19	27.5		100	1497210000		
10	4	4.5	7	4.3	12	20	10	100	1496900000		PZ RK 10/120
	5			5.3	12	21		100	1496910000		
	6			6.4	12	22.5		100	1496920000		
	8			8.4	15	25		100	1496930000		
	10			10.5	18	27		100	1496940000		
	12			13	20	28.5		100	1496950000		
16	5	5.5	8.5	5.3	12	25		100	1496970000		
	6			6.4	12	26.5		100	1496980000		
	8			8.4	15	29		100	1496990000		
	10			10.5	18	31		100	1497000000		
	12			13	19	32		100	1497010000		
25	5	7	10	5.3	15	33.5	15	100	1495830000		
	6			6.4	15	31.5		100	1496490000		
	8			8.4	16	33		100	1496500000		
	10			10.5	18	34.5		100	1496510000		
	12			13	20	36		100	1496520000		
	14			15	22	39		100	1496530000		

\* UL not tested



Tubular cable lugs, copper, euro-series



Tubular cable lugs 35 – 300 mm<sup>2</sup>, euro-series

Technical data

Material:

Surface:

Approvals:

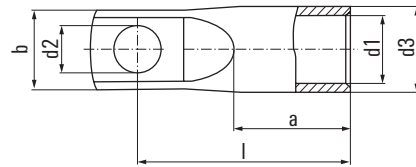
Cu according to DIN EN 13600  
tin plated



Ordering data

Cross section mm <sup>2</sup>	flat hole M	dimensions in mm						weight 100 pcs./kg	Qty (pcs.)	Order No.	Tool recommendation	
		d1	d3	d2	b	l	a					
35	6	8.5	12	6.4	17	33	17	2.07	100	1496540000	PZ PK 6/70 + PZ RK 6/70	EPG 45
	8			8.4	17	34		2.18	100	1496550000		
	10			10.5	20	36.5		2.19	100	1496570000		
	12			13	22	37.5		2.33	100	1496580000		
50	6	10	14	6.4	20	37	19	3.01	100	1496590000		
	8			8.4	20	39		3.04	100	1496600000		
	10			10.5	20	40.5		3.13	100	1496610000		
	12			13	23	42		3.13	100	1496620000		
	14			15	23	44		3.51	100	1495750000		
	16			17	27	46		3.55	100	1496630000		
70	6	12	16.5	6.4	24	40.5	21	4.11	25	1496640000		
	8			8.4	24	42.5		4.46	25	1496650000		
	10			10.5	24	43.5		4.64	25	1496670000		
	12			13	24	45		4.73	25	1495570000		
	14			15	25	46		4.91	25	1495770000		
	16			17	28	48.5		4.96	25	1495580000		
95	6	13.5	18	6.4	26	43	23	4.95	25	1495820000		
	8			8.4	26	46		5.36	25	1495600000		
	10			10.5	26	47		5.51	25	1495610000		
	12			13	26	48		5.51	25	1495620000		
	14			15	26	51.5		5.89	25	1495780000		
	16			17	28	51		5.85	25	1495630000		
120	6	15	20	6.4	26	43	23	6.13	25	1495640000		
	8			8.4	29	49.5	26	6.88	25	1495790000		
	10			10.5	29	52		7.99	25	1495650000		
	12			13	29	51.5		7.84	25	1495670000		
	14			15	30	53		7.86	25	1495800000		
	16			17	30	55		8.07	25	1495680000		
150	6	16.8	21.3	6.4	26	43	23	8.90	25	1495690000		
	8			8.4	29	49.5	26	8.88	25	1495700000		
	10			10.5	31	56.5		8.37	25	1495710000		
	12			13	31	56		8.07	25	1495720000		
	14			15	31	57		8.30	25	1495810000		
	16			17	31	58		8.36	25	1495730000		
185	6	19	24	6.4	26	43	23	8.75	25	1495740000		
	8			8.4	35	58	30	10.37	25	1497290000*		
	10			10.5	35	59		10.61	25	1495430000		
	12			13	35	58.5		10.60	25	1495440000		
	14			15	35	61		10.72	25	1497250000		
	16			17	35	63		10.86	25	1495450000		
240	6	21	26	6.4	26	43	23	11.33	25	1495470000		
	8			8.4	38	67	35	12.40	25	1495480000*		
	10			10.5	38	67		12.97	25	1495490000		
	12			13	38	67		13.02	25	1495500000		
	14			15	38	69		13.36	25	1497270000		
	16			17	38	69.5		13.56	25	1495510000		
300	6	21	26	6.4	26	43	23	13.80	25	1495520000		
	8			8.4	38	67	35	12.40	25	1495480000*		
	10	24	30	10.5	44	79.5	42	20.45	20	1495530000*		
	12			13	44	82		21.18	20	1495540000		
	14			15	44	84		22.19	20	1497280000		
	16			17	44	85		21.94	20	1495550000		
300	6	21	26	6.4	26	43	23	22.40	20	1497240000		
	8			8.4	38	67	35	12.40	25	1495480000*		

\* UL not tested



**Tubular cable lugs 35 – 300 mm<sup>2</sup>, euro-series, with narrow flange**

**Technical data**

Material: Cu according to DIN EN 13600  
 Surface: tin plated  
 Approvals:

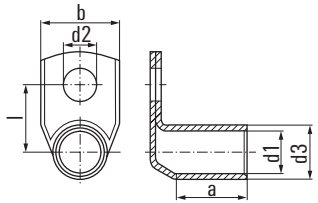


**Ordering data**

Cross section mm <sup>2</sup>	flat hole M	dimensions in mm						weight 100 pcs./kg	Qty. (pcs.)	Order No.	Tool recommendation		
		d1	d3	d2	b	l	a				PZ PK 6/70 + PZ RK 6/70	EPG 45	APG 80 + HPG 80, EPG 45 APG 55 + HPG 55
35	6	8.5	12	6.4	15	33	17	1.93	25	1494790000	PZ PK 10/120 + PZ RK 10/120	EPG 45	APG 80 + HPG 80, EPG 45 APG 55 + HPG 55
	8			8.4	15	35		1.90	25	1494810000*			
50	6	10	14	6.4	15	37	19	2.69	25	1494820000			
	8			8.4	17	39		2.79	25	1494830000			
	10			10.5	17	41		2.99	25	1494840000			
70	6	11.8	16.5	6.4	17	41	21	3.99	25	1494850000			
	8			8.4	17	43		4.38	25	1494860000			
	10			10.5	17	45		4.40	25	1494870000			
	12			13	19	46		4.48	25	1494880000			
95	6	13.5	18	6.4	19	43	23	4.67	25	1494430000			
	8			8.4	19	45		4.90	25	1494890000			
	10			10.5	19	47		5.10	25	1494900000			
	12			13	19	48		5.20	25	1494910000			
120	6	14.7	20	6.4	20	49	26	6.43	10	1494410000			
	8			8.4	20	51		7.12	10	1494420000			
	10			10.5	20	53		6.70	10	1494920000			
	12			13	20	54		7.12	10	1494930000			
150	6	16.3	21.3	6.4	19	53	29	7.01	10	1494440000			
	8			8.4	19	55		7.31	10	1494940000			
	10			10.5	19	56		7.63	10	1494950000			
	12			13	22	59		7.63	10	1494970000			
185	10	18.7	24	10.5	26	60	30	10.47	10	1494980000			
	12			13	26	59.5		10.27	10	1494990000			
	16			17	26	64		10.81	10	1495000000			
240	10	21	26	10.5	30	65	35	12.80	5	1494340000			
	12			13	30	65		11.71	5	1494350000			
	16			17	30	68		12.11	5	1494370000			
300	10	23.5	30	10.5	30	76	42	19.66	5	1494380000*			
	12			13	30	79		20.08	5	1494390000*			
	16			17	30	81		20.60	5	1494400000*			

\* UL not tested

**Tubular cable lugs with angle, copper, euro-series**



**Tubular cable lugs with 90° angle,  
0.5 – 35 mm<sup>2</sup>, euro-series**

**Technical data**

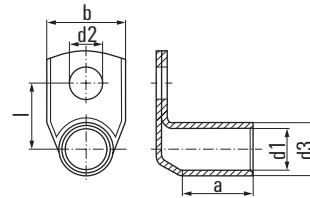
Material: Cu according to DIN EN 13600  
 Surface: tin plated  
 Approvals:



**Ordering data**

Cross-section mm <sup>2</sup>	flat hole M	dimensions in mm						weight 100 pcs./kg	Qty. (pcs.)	Order No.	Tool recommendation
		d1	d3	d2	b	l	a				
0.5 - 0.75	3	1.4	3	3.2	6.5	7.5	5	0.09	100	1495180000*	HTN 21
	4			4.3	8.5	8.5		0.10	100	1495190000*	
	5			5.3	10	9.5		0.10	100	1495200000*	
1.0 - 1.5	3	1.9	3.9	3.2	6.5	8	5	0.16	100	1495210000*	PZ RK 6/70
	4			4.3	8.5	9		0.16	100	1495220000*	
	5			5.3	10	10		0.16	100	1495230000*	
	6			6.4	11	12		0.15	100	1495240000*	
2.5	4	2.4	4.4	4.3	8.5	9.2	5.5	0.18	100	1495250000*	PZ RK 10/120
	5			5.3	10	10.2		0.18	100	1495270000*	
	6			6.4	11	12.2		0.22	100	1495280000*	
	8			8.4	14	14.2		0.23	100	1495290000*	
4	4	3	5	4.3	8.5	9.5	7	0.25	100	1495300000*	EPG 45
	5			5.3	10	10.5		0.24	100	1495310000*	
	6			6.4	11	12.5		0.29	100	1495320000*	
	8			8.4	14	14.5		0.30	100	1495330000*	
6	4	3.5	6.5	4.3	10	10.3	8	0.52	100	1497220000	PZ RK 10/120
	5			5.3	11	11.2		0.56	100	1496120000	
	6			6.4	11	13.3		0.62	100	1496130000	
	8			8.4	15	15.3		0.64	100	1496140000	
	10			10.5	18	17.2		0.68	100	1496150000	
10	4			13	20	18.2		0.66	100	1496170000	PZ RK 10/120
	5	4.5	7	5.3	12	11.5	9	0.54	100	1497020000	
	6			6.4	12	12.5		0.59	100	1497030000	
	8			8.4	15	15.5		0.67	100	1497040000	
	10			10.5	18	17.5		0.70	100	1497050000	
16	12			13	20	18.5		0.70	100	1497070000	PZ RK 10/120
	5	5.5	8.5	5.3	12	13	12	1.07	100	1497080000	
	6			6.4	12	14.3		1.15	100	1497090000	
	8			8.4	15	16.3		1.20	100	1497100000	
	10			10.5	18	18.3		1.23	100	1497110000	
25	12			13	20	19.3		1.23	100	1497120000	PZ RK 10/120
	6	7	10	6.4	15	15.5	14	1.35	100	1495850000	
	8			8.4	16	17.5		1.43	100	1495870000	
	10			10.5	18	19.5		1.57	100	1495880000	
	12			13	20	20.5		1.51	100	1495890000	
35	14			15	22	22.5		1.69	100	1495900000	PZ RK 10/120
	6	8.5	12	6.4	17	16.5	16	2.10	100	1495910000	
	8			8.4	17	18.5		2.31	100	1495920000	
	10			10.5	20	20.5		2.36	100	1495930000	
	12			13	22	21.5		2.37	100	1495940000	
14	14			15	23	23.5		2.48	100	1494640000	PZ RK 10/120
	16			17	28	24.5		2.48	100	1494690000	
	16			17	28	24.5		2.48	100	1494690000	

\* UL not tested



**Tubular cable lugs with 90° angle,  
50 – 300 mm<sup>2</sup>, euro-series**

**Technical data**

Material: Cu according to DIN EN 13600  
Surface: tin plated  
Approvals:

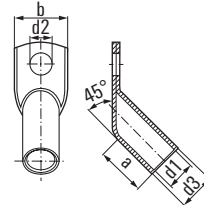


**Ordering data**

Cross-section mm <sup>2</sup>	flat hole M	dimensions in mm						weight 100 pcs./kg	Qty. (pcs.)	Order No.	Tool recommendation	
		d1	d3	d2	b	l	a					
50	6	10	14	6.4	20	17.5	18	3.00	100	1495950000	PZ PK 6/70 + PZ RK 6/70	EPG 45 APG 55 + HPG 55 APG 80 + HPG 80, EPG 45
	8			8.4	20	19.5		3.22	100	1495970000		
	10			10.5	20	21.5		3.32	100	1495980000		
	12			13	23	22.5		3.28	100	1495990000		
	14			15	23	24.5		3.37	100	1494650000		
	16			17	27	28.5		3.63	100	1496000000		
20			21	30	32.5		3.89	100	1494710000			
70	6	12	16.5	6.4	24	18.8	20	4.41	25	1496010000		
	8			8.4	24	20.8		4.86	25	1496020000		
	10			10.5	24	22.8		5.06	25	1496030000		
	12			13	24	23.8		4.94	25	1496040000		
	14			15	25	25.8		5.19	25	1494660000		
	16			17	28	26.8		5.11	25	1496050000		
20			21	29	30.8		5.26	25	1496070000			
95	8	13.5	18	8.4	26	21.5	22	5.33	25	1496080000		
	10			10.5	26	23.5		5.59	25	1496090000		
	12			13	26	24.5		5.66	25	1496100000		
	14			15	26	26.5		5.89	25	1494670000		
	16			17	28	27.5		6.00	25	1496110000		
120	8	15	20	8.4	29	22.5	25	7.63	25	1494680000		
	10			10.5	29	24.5		8.07	25	1494450000		
	12			13	29	25.5		7.99	25	1494470000		
	16			17	30	28.5		8.46	25	1494480000		
150	8	16.8	21.3	8.4	31	25.7	28	8.03	25	1494490000		
	10			10.5	31	25.7		8.07	25	1494500000		
	12			13	31	26.7		8.29	25	1494510000		
	16			17	31	29.7		8.50	25	1494520000		
	20			21	35	33.7		8.89	25	1494530000		
185	10	19	24	10.5	35	27	29	11.41	25	1494540000		
	12			13	35	28		12.04	25	1494550000		
	16			17	35	31		12.48	25	1494570000		
	20			21	35	35		12.70	25	1494580000		
240	10	21	26	10.5	38	28	34	13.32	25	1494590000		
	12			13	38	29		13.40	25	1494610000		
	16			17	38	32		13.76	25	1494620000		
	20			21	38	36		14.23	25	1494630000		
300	12	24	30	13	43	31	41	19.92	20	1497300000		
	16			17	43	34		20.90	20	1497310000		
	20			21	43	38		21.81	20	1497320000		

\* UL not tested

Tubular cable lugs with angle, copper, euro-series



Tubular cable lugs with 45° angle,  
10 - 240 mm<sup>2</sup>, euro-series

Technical data

Material:

Cu according to DIN EN 13600

Surface:

tin plated

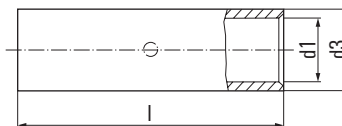
Approvals:



Ordering data

Cross-section mm <sup>2</sup>	flat hole M	dimensions in mm					weight 100 pcs./kg	Qty. (pcs.)	Order No.	Tool recommendation
		d1	d3	d2	b	a				
10	5	4.5	7	5.3	12	9	0.55	100	1496810000	PZ PK 6/70 + PZ RK 10/120, MTR 110 EPG 45 MTR 160 + MTR 300, APG 55 + HPG 55, APG 80 + HPG 80
	6			6.4	12		0.58	100	1496820000	
	8			8.4	15		0.65	100	1496830000	
	10			10.5	18		0.66	100	1496840000*	
16	5	5.5	8.5	5.3	12	12	0.95	100	1496850000	
	6			6.4	12		1.02	100	1496870000	
	8			8.4	15		1.17	100	1496880000	
	10			10.5	18		1.17	100	1496890000	
25	6	7	10	6.4	15	14	1.39	100	1496180000	
	8			8.4	16		1.51	100	1496190000	
	10			10.5	18		1.66	100	1496200000	
	12			13	20		1.70	100	1496210000	
35	6	8.5	12	6.4	17	16	2.17	50	1496220000	
	8			8.4	17		2.23	50	1496230000	
	10			10.5	20		2.34	50	1496240000	
	12			13	22		2.40	50	1496250000	
50	6	10	14	6.4	20	18	2.94	50	1496270000*	
	8			8.4	20		3.34	50	1496280000	
	10			10.5	20		3.65	50	1496290000	
	12			13	23		3.65	50	1496300000	
70	8	12	16.5	8.4	24	20	4.90	25	1496310000	
	10			10.5	24		5.23	25	1496320000	
	12			13	24		5.34	25	1496330000	
95	8	13.5	18	8.4	26	22	6.18	25	1496340000	
	10			10.5	26		6.20	25	1496350000	
	12			13	26		6.20	25	1496370000	
	16			17	28		6.80	25	1496380000*	
120	8	15	20	8.4	29	25	7.80	25	1496390000	
	10			10.5	29		8.90	25	1496400000	
	12			13	29		8.91	25	1496410000	
	16			17	30		9.31	25	1496420000	
150	8	16.8	21.3	8.4	31	28	11.31	25	1496430000*	
	10			10.5	31		9.80	25	1496440000	
	12			13	31		9.68	25	1496450000	
	16			17	31		10.12	25	1496470000	
	20			21	35		10.12	25	1496480000*	
185	10	19	24	10.5	35	29	12.35	20	1495340000	
	12			13	35		12.24	20	1495350000	
	16			17	35		12.84	20	1495370000	
	20			21	35		13.99	20	1495380000	
240	12	21	26	13	38	34	15.46	15	1495400000	
	16			17	38		16.51	15	1495410000	
	20			21	38		17.04	15	1495420000	

\* UL not tested



**Joint connector 0.5 – 240 mm<sup>2</sup>  
euro-series**

**Technical data**

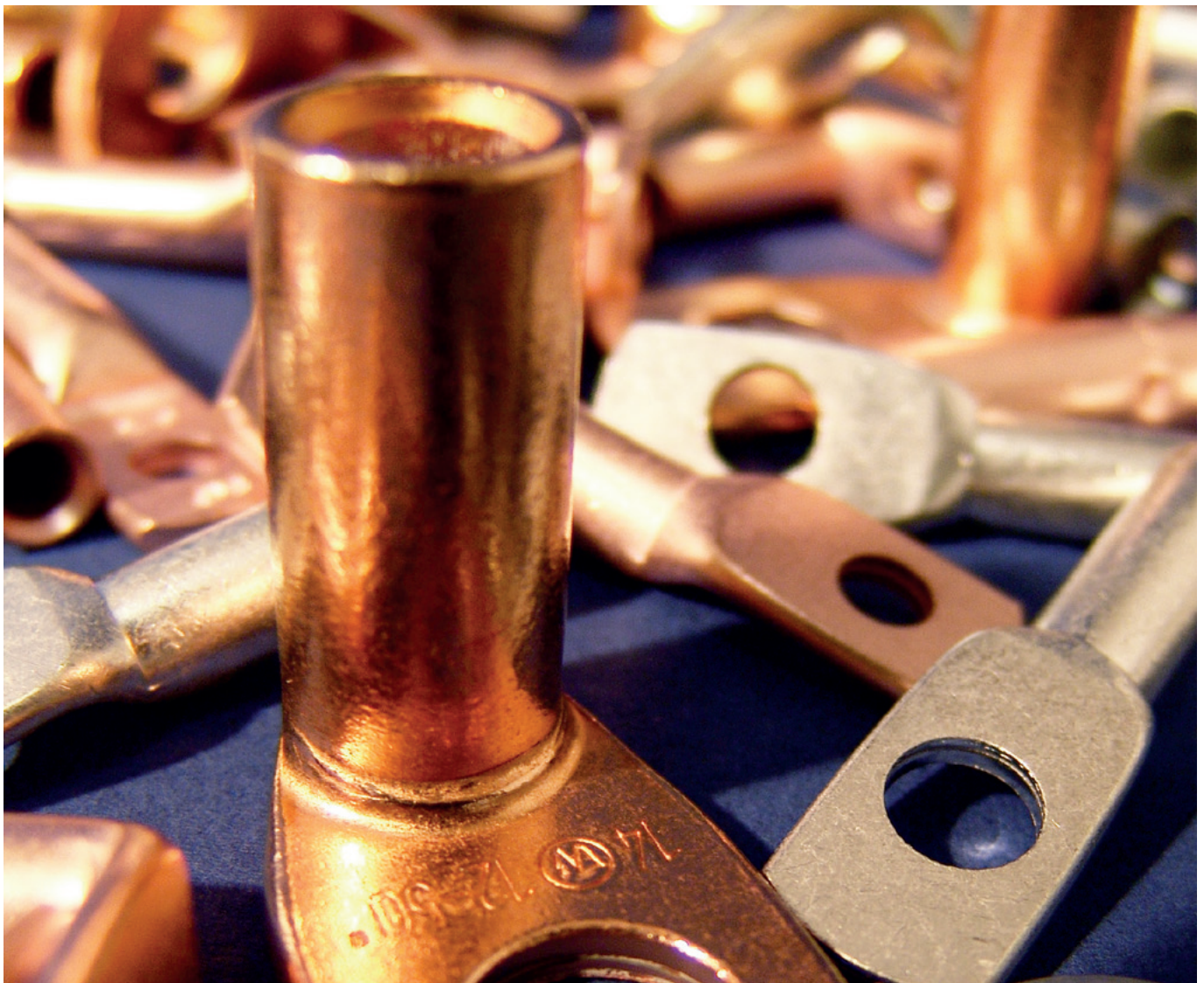
Material: Cu according to DIN EN 13600  
 Surface: tin plated  
 Type: with wirestop

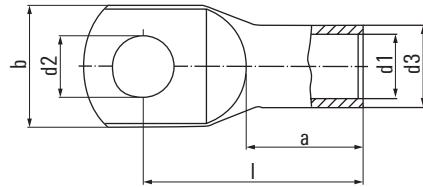
**Ordering data**

Cross-section mm <sup>2</sup>	dimensions in mm			weight 100 pcs./kg	Qty. (pcs.)	Order No.	Tool recommendation			
	d1	d3	l				HTN 21	EPG 45	MTR 110	APG 55 + HPG 80 + HPG 80
0.5 - 0.75	1.4	3	15	0.08	100	1497330000				
1.0 - 1.5	1.9	3.9	15	0.12	100	1497340000				
2.5	2.4	4.4	16	0.15	100	1497350000				
4	3	5	19	0.21	100	1497370000				
6	3.5	6.5	25	0.51	100	1494720000				
10	4.5	7	30	0.60	50	1497130000				
16	5.5	8.5	35	1.00	50	1497140000				
25	7	10	40	1.41	50	1494730000				
35	8.5	12	45	2.16	50	1494740000				
50	10	14	50	3.32	50	1494750000				
70	12	16.5	55	4.91	50	1494760000				
95	13.5	18	60	6.09	50	1494770000				
120	15	20	65	7.88	25	1494780000				
150	16.8	21.3	70	8.68	25	1497380000				
185	19	24	75	11.63	25	1497390000				
240	21	26	85	14.22	25	1497400000				

# Crimp cable lugs, copper DIN 46235

A





### Crimp cable lugs, copper 6 – 95 mm<sup>2</sup>, DIN 46235

#### Technical data

Material: Cu according to DIN EN 13600  
Surface: tin plated

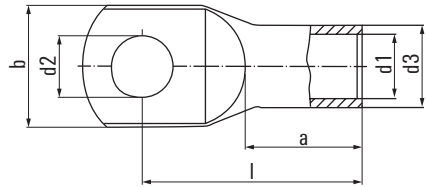
#### Ordering data

Cross-section mm <sup>2</sup>	flat hole M	die code	dimensions in mm						weight 100 pcs./kg	Qty. (pcs.)	Order No.	Tool recommendation
			d1	d3	d2	b	l	a				
6	5	5	3.7	5.5	5.3	8.5	24	10	0.31	100	1497840000	PZ PK 6/70 CTN 25 D5 EPG 45, APG 55 + HPG 55, APG 80 + HPG 80 PZ PK 10/120
	6				6.4	9	24		0.34	100	1497850000	
	8*				8.4	13	26		0.35	100	1497860000	
10	5	6	4.4	6	5.3	10	27	10	0.35	100	1497870000	
	6				6.4	10	27		0.37	100	1497880000	
	8*				8.4	13	28		0.38	100	1497890000	
	10*				10.5	15	29		0.38	100	1497910000	
16	5*	8	5.5	8.5	5.3	13	36	20	1.22	100	1497920000	
	6				6.4	13	36		1.27	100	1497930000	
	8				8.4	13	37		1.30	100	1497940000	
	10				10.5	16.5	38		1.32	100	1497950000	
	12*				13	19	40		1.35	100	1497960000	
25	6	10	7	10	6.4	14	39	20	1.62	100	1497970000	
	8				8.4	17	39		1.73	100	1497980000	
	10				10.5	17	40.5		1.77	100	1497990000	
	12				13	18	40.5		1.72	100	1498000000	
	16*				17	22	45		1.99	100	1498010000	
35	6*	12	8.2	12.5	6.4	17.5	42.5	20	3.12	100	1498020000	
	8				8.4	18	42		3.19	100	1498030000	
	10				10.5	20	42.5		3.17	100	1498040000	
	12				13	21	44		3.11	100	1498050000	
	16*				17	28	47		3.14	100	1498060000	
50	6*	14	9.8	14.5	6.4	20	52	28	4.67	100	1498510000	
	8				8.4	20	52		5.00	100	1498070000	
	10				10.5	22	52		4.94	100	1498080000	
	12				13	23	52		4.91	100	1498090000	
	14*				15	26	53.5		4.94	100	1498570000	
	16				17	28	55.5		5.04	100	1498110000	
70	20*				21	30	61.5		5.56	100	1498120000	
	8	16	11.3	16.5	8.4	24	56	28	6.54	50	1498130000	
	10				10.5	24	56		6.54	50	1498140000	
	12				13	24	56.5		6.57	50	1498150000	
	14*				15	24	55.5		6.00	50	1498560000	
95	16				17	29	57		6.92	50	1498160000	
	20*				21	31	61		6.99	50	1498170000	
	8*	18	13.5	19	8.4	28	65	35	9.36	50	1498180000	
	10				10.5	28	65.5		9.55	50	1498190000	
	12				13	28	65.5		9.45	50	1498210000	
14*	14*				15	28	65.5		9.43	50	1498520000	
	16				17	30	65.5		9.44	50	1498220000	
	20*				21	33	71		9.86	50	1498230000	

\* not standardized, tube measurements in accordance with DIN 46235



## Crimp cable lugs, copper, DIN 46235

Crimp cable lugs, copper,  
120 - 300 mm<sup>2</sup>, DIN 46235

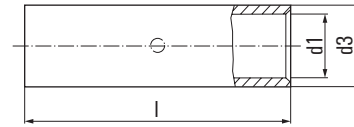
## Technical data

Material: Cu according to DIN EN 13600  
Surface: tin plated

## Ordering data

Cross-section mm <sup>2</sup>	flat hole M	die code	dimensions in mm						weight 100 pcs./kg	Qty. (pcs.)	Order No.	Tool recommendation		
			d1	d3	d2	b	l	a				PZPK 10/120	EPG 45	APG 80 + HPG 80 APG 55 + HPG 55
120	8*	20	15.5	21	8.4	31	70	35	11.35	50	1498480000	PZPK 10/120	EPG 45	APG 80 + HPG 80 APG 55 + HPG 55
	10				10.5	31	70		11.40	50	1498240000			
	12				13	31	70.5		11.43	50	1498250000			
	14*				15	31	70		11.41	50	1498490000			
	16				17	31.5	70		11.36	50	1498270000			
	20				21	36	72		11.51	50	1498280000			
150	8*	22	17	23.5	8.4	34	79	35	16.40	25	1498290000			
	10				10.5	34	79		16.46	25	1498310000			
	12				13	34	78.5		16.53	25	1498320000			
	14*				15	34	78		16.49	25	1498580000			
	16				17	34	78		16.35	25	1498330000			
	20				21	38	78		16.34	25	1498340000			
185	8*	25	19	25.5	8.4	37	83	40	18.50	25	1498540000			
	10				10.5	37	83		18.50	25	1498350000			
	12				13	37	82.5		18.95	25	1498360000			
	14*				15	37	82		18.96	25	1498590000			
	16				17	37	82		19.41	25	1498370000			
	20				21	40	83		19.01	25	1498380000			
240	10*	28	21.5	29	10.5	42	92	40	27.10	20	1498390000			
	12				13	42.5	92		26.65	20	1498410000			
	14*				15	42.5	92		26.73	20	1498530000			
	16				17	42.5	92		27.45	20	1498420000			
	20				21	45	92		27.67	20	1498430000			
300	10*	32	24.5	32	10.5	48.5	104	50	34.80	10	1498440000			
	12*				13	48.5	104		34.50	10	1498450000			
	14*				15	48.5	104		34.60	10	1498550000			
	16				17	48.5	100		34.16	10	1498460000			
	20				21	48.5	100		34.46	10	1498470000			

\* not standardized, tube measurements in accordance with DIN 46235



**Tubular compression connectors  
6 - 300 mm<sup>2</sup>, DIN 46267 part 1,  
strain relieved**

**Technical data**

Material: Cu according to DIN EN 13600  
Surface: tin plated

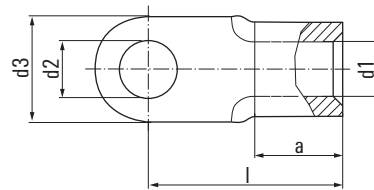
**Ordering data**

Cross-section mm <sup>2</sup>	die code	dimensions in mm			weight 100 pcs./kg	Qty. (pcs.)	Order No.	Tool recommendation				
		d1	d3	l				PZ PK 6/70	CTN 25 D5	PZ PK 10/120	EPG 45	APG 80 + HPG 80 APG 55 + HPG 55
6	5	3.7	5.5	30	0.35	100	1498610000					
10	6	4.4	6	30	0.35	100	1498620000					
16	8	5.5	8.5	50	1.51	100	1498630000					
25	10	7	10	50	1.86	100	1498640000					
35	12	8.2	12.5	50	3.20	100	1498650000					
50	14	9.8	14.5	56	4.64	50	1498660000					
70	16	11.3	16.5	56	5.64	50	1498670000					
95	18	13.5	19	70	8.98	50	1498680000					
120	20	15.5	21	70	10.27	25	1498690000					
150	22	17	23.5	80	14.96	25	1498710000					
185	25	19	25.5	85	16.78	25	1498720000					
240	28	21.5	29	90	23.20	15	1498730000					
300	32	24.5	32	100	30.52	10	1498740000					

# Terminals noninsulated

A





### Terminals 0.1 – 6 mm<sup>2</sup>, DIN 46234

#### Technical data

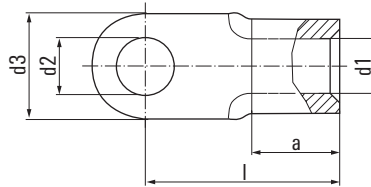
Material: Cu-HCP  
Surface: tin plated  
S = small palm

#### Ordering data

Cross-section mm <sup>2</sup>	flat hole M	d1	d2	d3	l	a	weight 100 pcs./kg	Qty. (pcs.)	Order No.	Tool recommendation
0.1 – 0.5	2	1	2.2	5	10	4	0.02	100	1493670000	HTN 21
	3		3.2	5	10		0.02	100	1493680000	
	4		4.3	6.5	12		0.03	100	1493690000	
	5		5.3	8	11		0.03	100	1493700000	
0.5 – 1	2*	1.6	2.2	6	11	5	0.06	100	1493720000	
	2.5		2.7	6	11		0.06	100	1493730000	
	3		3.2	6	11		0.06	100	1493740000	
	3.5		3.7	6	11		0.06	100	1493750000	
	4/S*		4.3	7	11		0.06	100	1493760000	
	4		4.3	8	12		0.07	100	1493770000	
	5/S*		5.3	8	12		0.06	100	1493780000	
	5		5.3	10	13		0.08	100	1493790000	
	6*		6.5	10	13		0.07	100	1493800000	
	8*		8.4	12	17		0.10	100	1493810000	
10*		10.5	14	17		0.10	100	1493710000		
1.5 – 2.5	3	2.3	3.2	6	11	5	0.07	100	1493820000	
	3.5		3.7	6	11		0.06	100	1493830000	
	4/S*		4.3	6.8	11		0.06	100	1493840000	
	4		4.3	8	12		0.08	100	1493850000	
	5/S*		5.3	8	12		0.07	100	1493870000	
	5		5.3	10	14		0.10	100	1493890000	
	6		6.5	11	16		0.11	100	1493900000	
	8		8.4	14	17		0.14	100	1493910000	
	10*		10.5	18	20		0.19	100	1493930000	
12*		13	18	20		0.16	100	1493940000		
4 – 6	4	3.6	4.3	8	14	6	0.14	100	1493950000	EPG 45
	5		5.3	10	15		0.16	100	1493960000	
	6		6.5	11	16		0.17	100	1493970000	
	8		8.4	14	19		0.21	100	1493980000	
	10		10.5	18	21		0.27	100	1493990000	
12*		13	18	21		0.23	100	1494000000	APG 80 + HPG 80 APG 55 + HPG 55	

\* not standardized, dimensions similar to DIN 46234

**Terminals ring and fork-type, noninsulated**



**Terminals 10 – 240 mm<sup>2</sup>,  
DIN 46234**

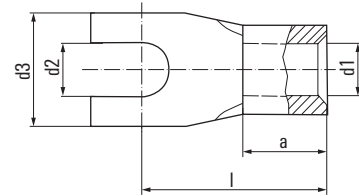
**Technical data**

Material: Cu-HCP  
Surface: tin plated

**Ordering data**

Cross-section mm <sup>2</sup>	flat hole M	dimensions in mm						weight 100 pcs./kg	Qty. (pcs.)	Order No.	Tool recommendation
		d1	d2	d3	l	a					
10	4*	4.5	4.3	10	16	8	0.23	100	1494010000	CTN 25 DA EPG 45 APG 80 + HPG 80 APG 55 + HPG 55	
	5		5.3	10	16		0.22	100	1494020000		
	6		6.5	11	17		0.24	100	1494030000		
	8		8.4	14	20		0.29	100	1494040000		
	10		10.5	18	21		0.35	100	1494050000		
	12		13	22	23		0.41	100	1494060000		
16	5	5.8	5.3	11	20	10	0.40	100	1494070000		
	6		6.5	11	20		0.38	100	1494080000		
	8		8.4	14	22		0.42	100	1494090000		
	10		10.5	18	24		0.50	100	1494100000		
	12		13	22	26		0.58	100	1494110000		
	25	5	7.5	5.3	12	25	11	0.70	50		1494120000
6			6.5	12	25		0.71	50	1494130000		
8			8.4	16	25		0.76	50	1494140000		
10			10.5	18	26		0.78	50	1494150000		
12			13	22	31		0.97	50	1494160000		
16			17	28	35		1.20	50	1493490000		
35	6	9	6.5	15	26	12	0.97	50	1494170000		
	8		8.4	16	26		0.96	50	1494180000		
	10		10.5	18	27		1.00	50	1494190000		
	12		13	22	31		1.17	50	1493130000		
	16		17	28	36		1.41	50	1493140000		
	20*		21	30	37.5	14	1.67	50	1493520000		
50	6	11	6.5	18	34	16	1.75	50	1493510000		
	8		8.4	18	34		1.72	50	1493150000		
	10		10.5	18	34		1.66	50	1493160000		
	12		13	22	36		1.80	50	1493170000		
	16		17	28	40		2.11	50	1493180000		
	20*		21	32	41.2	18	2.57	50	1493530000		
70	6	13	6.5	22	38	18	2.66	50	1493190000		
	8		8.4	22	38		2.34	50	1493210000		
	10		10.5	22	38		2.58	50	1493220000		
	12		13	22	38		2.49	50	1493230000		
	16		17	28	42		2.77	50	1493240000		
	20*		21	32	45	19	3.06	50	1493250000		
95	8	15	8.4	24	42	20	4.24	25	1493260000		
	10		10.5	24	42		4.17	25	1493270000		
	12		13	24	42		3.92	25	1493280000		
	16		17	28	44		3.94	25	1493290000		
	20*		21	32	51.8		4.25	25	1493310000		
	120	8	16.5	8.4	24	44	22	5.77	25	1493320000	
10			10.5	24	44		5.67	25	1493330000		
12			13	24	44		5.42	25	1493340000		
16			17	28	48		6.21	25	1493350000		
20*			21	32	53	21	5.81	25	1493360000		
150		10	19	10.5	30	50	24	8.29	25	1493370000	
	12		13	30	50		8.31	25	1493380000		
	16		17	30	50		8.01	25	1493390000		
	20*		21	36	63	27	7.35	25	1493410000		
	185	10	21	10.5	36	50	28	11.16	25	1493420000	
12			13	36	50		10.78	25	1493430000		
16			17	36	50		10.61	25	1493440000		
20*			21	36	50		10.17	25	1493450000		
240		10	23.5	10.5	38	56	32	15.01	25	1493460000	
	12		13	38	56		14.98	25	1493470000		
	16		17	38	56		14.53	25	1493480000		

\* not standardized



## Terminals fork-type 0,5 - 16 mm<sup>2</sup>

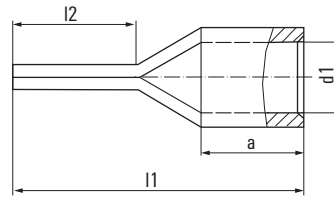
### Technical data

Material:	Cu-HCP (0,5 - 10 mm <sup>2</sup> ) Cu-ETP (16 mm <sup>2</sup> )
Surface:	tin plated S = small palm

### Ordering data

Cross-section mm <sup>2</sup>	flat hole M	dimensions in mm					weight 100 pcs./kg	Qty. (pcs.)	Order No.	Tool recommendation		
		d1	d2	d3	l	a						
0.5 - 1	C 3	1.6	3.2	6	11	5	0.06	100	1493540000	HTN 21	EPG 45	APG 80 + HPG 80 APG 55 + HPG 44
	C 3.5		3.7	6	11		0.05	100	1493550000			
	C 4/S		4.3	7	12		0.06	100	1493560000			
	C 4		4.3	8	12		0.07	100	1493570000			
	C 5		5.3	10	13		0.08	100	1493580000			
	C 6		6.5	12	17		0.09	100	1493590000			
1.5 - 2.5	C 3	2.3	3.2	6	11	5	0.06	100	1493600000			
	C 3.5		3.7	6.8	11		0.07	100	1493610000			
	C 4/S		4.3	6.8	11		0.06	100	1493620000			
	C 4		4.3	8	12		0.08	100	1493630000			
	C 5		5.3	10	14		0.10	100	1493640000			
	C 6		6.5	11	16		0.11	100	1493650000			
4 - 6	C 4	3.6	4.3	8	14	6	0.14	100	1493660000			
	C 5		5.3	10	15		0.16	100	1492650000			
	C 6		6.5	11	16		0.16	100	1492660000			
	C 8		8.4	14	19		0.19	100	1492670000			
10	C 5	4.5	5.3	10	16	8	0.23	100	1492680000			
	C 6		6.5	11	17		0.24	100	1492690000			
16	C 6	5.8	6.5	11	20	10	0.48	50	1492700000			
	C 8		8.4	14	22		0.50	50	1492710000			

Pin cable lugs DIN 46230, noninsulated



Pin cable lugs 0.1 – 95 mm<sup>2</sup>,  
DIN 46230

Technical data

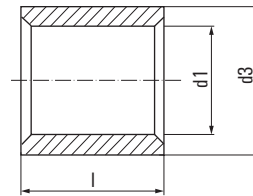
Material: Cu-HCP (0.1 – 6 mm<sup>2</sup>)  
Cu-ETP (10 – 95 mm<sup>2</sup>)  
Surface: tin plated

Ordering data

Cross-section mm <sup>2</sup>	dimensions in mm				Ø pin	weight 100 pcs./kg	Qty. (pcs.)	Order No.	Tool recommendation		
	d1	l1	l2	a							
0.1 – 0.5	1	14	9	4	1.2	0.02	100	1492720000	HTN 21		
0.5 – 1	1.6	17	10	5	1.9	0.06	100	1492730000			
1.5 – 2.5	2.3	17	10	5	1.9	0.07	100	1492740000			
			22	15			100	1492750000*			
4 – 6	3.6	20	11	6	2.6	0.15	100	1492770000	CTN 25 D4		
10	4.5	22	12	8	2.3 x 4.2	0.25	100	1492780000			
16	5.8	26	13	10	2.5 x 5.6	0.41	100	1492790000			
25	7	34.1	16	14	2.5 x 6.9	0.66	50	1492800000*			
35	8.4	41	20	16	3.2 x 8.1	1.19	50	1492810000*			
50	9.5	45.7	21	19	3.7 x 9.5	1.88	50	1492820000*			
70	11.2	55	24	24	4 x 11	3.01	50	1492830000*			
95	13.5	55.5	22	24	5.1 x 12.3	4.2	25	1492840000*			

\* not standardized

**Parallel connectors 0.1 – 150 mm<sup>2</sup>, form A, DIN 46341 part 1**



**Technical data**

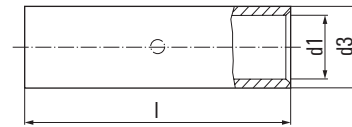
Material: Cu-HCP  
Surface: tin plated

**Ordering data**

Cross-section mm <sup>2</sup>	dimensions in mm			weight 100 pcs./kg	Qty. (pcs.)	Order No.	Tool recommendation		
	l	d1	d3				HTN 21	EPG 45	APG 80 + HPG 80
0.1 – 0.5*	5	1.2	2	0.01	100	1492850000	CTN 25 DA	APG 55 + HPG 44	APG 80 + HPG 80
0.5 – 1	7	1.6	3.3	0.04	100	1492860000			
1.5 – 2.5	7	2.3	4	0.05	100	1492870000			
4 – 6	7	3.6	5.7	0.09	100	1492880000			
10	9	4.6	6.8	0.15	100	1492890000			
16	10	5.9	8.3	0.23	100	1492900000			
25	12.5	7.7	10.7	0.45	100	1492910000			
35	14	9.2	12.4	0.65	100	1492920000			
50	17.5	11.2	14.8	1.13	100	1492930000			
70	18	13.5	17.5	1.59	100	1492940000			
95	19	15	20	2.34	50	1492950000			
120	21	16.7	22.7	3.53	50	1492960000			
150	25	19	25.5	5.02	50	1492970000			

\* not standardized

**Joint connector 0.1 – 150 mm<sup>2</sup>, form B, DIN 46341 part 1**



**Technical data**

Material: Cu-HCP  
Surface: tin plated

**Ordering data**

Cross-section mm <sup>2</sup>	dimensions in mm			weight 100 pcs./kg	Qty. (pcs.)	Order No.	Tool recommendation		
	l	d1	d3				HTN 21	EPG 45	APG 80 + HPG 80
0.1 – 0.5*	12	1.2	2	0.02	100	1492980000	CTN 25 DA	APG 55 + HPG 55	APG 80 + HPG 80
0.5 – 1	15	1.6	3.3	0.09	100	1492990000			
1.5 – 2.5	15	2.3	4	0.11	100	1493010000			
4 – 6	15	3.6	5.7	0.18	100	1493020000			
10	20	4.6	6.8	0.36	100	1493030000			
16	26	5.9	8.3	0.61	100	1493040000			
25	29	7.7	10.7	1.13	100	1493050000			
35	32	9.2	12.4	1.55	100	1493060000			
50	38	11.2	14.8	2.44	100	1493070000			
70	42	13.5	17.5	3.73	50	1493080000			
95	48	15	20	6.08	50	1493090000			
120	52	16.7	22.7	8.67	50	1493110000			
150	56	19	25.5	11.25	50	1493120000			

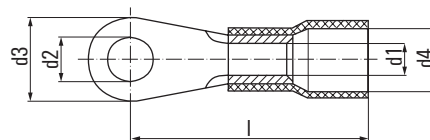
\* not standardized



# Insulated connectors

A





**Terminals 0.1 – 6 mm<sup>2</sup>  
DIN 46237 soldered seam and  
easy-entry insulation**

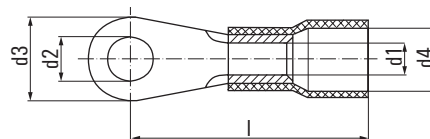
**Technical data**

Material: Cu-ETP  
insulation: PC  
or  
\* insulation: PA  
Surface: tin plated  
S = small palm

**Ordering data**

Cross-section mm <sup>2</sup>	flat hole M	colour of insulation	d1	dimensions in mm				Cu- weight 100 pcs./kg	Qty. (pcs.)	Order No.	Tool recommendation
				d4	d2	d3	l				
0.1 – 0.5	2	yellow	1	2.3	2.2	5	14	0.02	100	1492090000*	HTI 15 CTI 6 + CTI 6S
	3				3.2	5	14	0.02	100	1492100000*	
	4				4.3	6.5	16	0.03	100	1492110000*	
	5				5.3	8	16	0.03	100	1492120000*	
0.5 – 1	2	red	1.6	4	2.2	6	17	0.06	100	1492140000	
	2.5				2.7	6	17	0.06	100	1492150000	
	3				3.2	6	17	0.06	100	1492170000	
	3.5				3.7	6	17	0.06	100	1492180000	
	4/S				4.3	7	17.5	0.06	100	1492190000	
	4				4.3	8	18	0.07	100	1492200000	
	5/S				5.3	8	18.5	0.06	100	1492210000	
	5				5.3	10	19	0.08	100	1492220000	
	6				6.5	10	19	0.07	100	1492230000	
	8				8.4	14	23	0.10	100	1492240000	
10				10.5	18	25	0.10	100	1492130000		
1.5 – 2.5	3	blue	2.3	4.4	3.2	6	17	0.07	100	1492250000	
	3.5				3.7	6	17	0.06	100	1492270000	
	4/S				4.3	6.8	17.6	0.06	100	1492280000	
	4				4.3	8	18	0.08	100	1492290000	
	5/S				5.3	8	19.5	0.07	100	1492300000	
	5				5.3	10	20	0.10	100	1492310000	
	6				6.5	11	22	0.11	100	1492320000	
	8				8.4	14	23	0.14	100	1492330000	
10				10.5	18	25.6	0.19	100	1492340000		
12				13	18	26	0.16	100	1492350000		
4 – 6	4	yellow	3.6	6.4	4.3	8	21	0.14	100	1492370000	
	5				5.3	10	22	0.16	100	1492380000	
	6				6.5	11	23	0.17	100	1492390000	
	8				8.4	14	26	0.21	100	1492400000	
	10				10.5	18	28	0.27	100	1492410000	
12				13	18	28	0.23	100	1492420000		

\* insulation PA



**Terminals 10 – 16 mm<sup>2</sup>  
with soldered seam and easy-entry  
insulation**

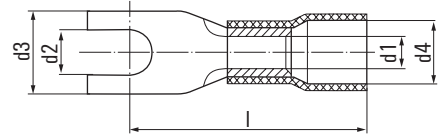
**Technical data**

Material: Cu-ETP  
insulation: PA  
Surface: tin plated

**Ordering data**

Cross-section mm <sup>2</sup>	flat hole M	colour of insulation	d1	dimensions in mm				Cu- weight 100 pcs./kg	Qty. (pcs.)	Order No.	Tool recommendation
				d4	d2	d3	l				
10	5	red	4,5	8	5,3	10	24,5	0,22	50	1492430000	EPG 45 APG 80 + HP G 80 APG 55 + HP G 55
	6				6,5	11	25,5	0,24	50	1492440000	
	8				8,4	14	28,5	0,29	50	1492450000	
	10				10,5	18	29,5	0,35	50	1492470000	
16	5	blue	5,8	10,5	5,3	11	31,5	0,40	50	1492480000	
	6				6,5	11	31,5	0,38	50	1492490000	
	8				8,4	14	33,5	0,42	50	1492500000	
	10				10,5	18	35,5	0,50	50	1492510000	

Terminals fork type



Terminals fork type 0.5 - 16 mm<sup>2</sup> with soldered seam and easy-entry insulation

Technical data

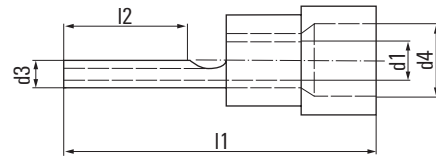
Material: Cu-ETP  
insulation: PC  
or  
\* insulation: PA  
Surface: tin plated  
S = small palm

Ordering data

Cross-section mm <sup>2</sup>	flat hole M	colour of insulation	dimensions in mm				Cu-weight 100 pcs./kg	Qty. (pcs.)	Order No.	Tool recommendation	
			d1	d4	d2	d3	l				
0.5 - 1	C 3	red	1.6	4	3.2	6	17	0.06	100	1492520000	HTI 15 CTI 6 + CTI 6G
	C 3.5				3.7	6	17	0.05	100	1492530000	
	C 4/S	blue	2.3	4.5	4.3	6.8	18	0.06	100	1492540000	
	C 4				4.3	8	18.1	0.07	100	1492550000	
	C 5				5.3	10	19	0.08	100	1492580000	
	C 6				6.5	11	21	0.09	100	1492590000	
1.5 - 2.5	C 3	blue	2.3	4.5	3.2	5.5	19	0.06	100	1492600000	
	C 3.5				3.7	6	17	0.07	100	1492610000	
	C 4/S				4.3	6.8	18.7	0.06	100	1492620000	
	C 4				4.3	8	18	0.08	100	1492630000	
	C 5				5.3	10	20	0.10	100	1492640000	
	C 6				6.5	11	22	0.11	100	1491260000	
4 - 6	C 4	yellow	3.6	6.4	4.3	8	21	0.14	100	1491270000	
	C 5				5.3	10	22	0.16	100	1491280000	
	C 6				6.5	11	23	0.16	100	1491290000	
	C 8				8.4	14	26	0.19	100	1491310000	
	C 10				10.5	18	28	0.33	100	1491320000	
10	C 5	red	4.5	8	5.3	10.5	24.1	0.23	50	1491330000*	EPG 45 APG 55+ HPG 55 APG 80+ HPG 80
	C 6				6.5	10.8	24.6	0.24	50	1491340000*	
16	C 6	blue	5.8	11	6.5	11	32.2	0.48	50	1491350000*	
	C 8				8.4	13.8	32.2	0.50	50	1491360000*	

\* insulation PA

### Pin cable lugs 0.1 – 35 mm<sup>2</sup> DIN 46231 with soldered seam and easy-entry insulation



#### Technical data

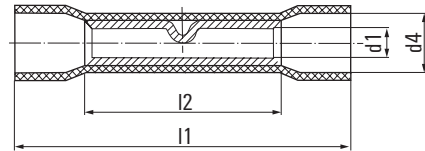
Material:	Cu-HCP (0.1 – 0.5 mm <sup>2</sup> ) or Cu-ETP (0.5 – 35 mm <sup>2</sup> )
Isolation:	PC (resp. *PA)
Surface:	tin plated

#### Ordering data

Cross-section mm <sup>2</sup>	colour of insulation	d1	d4	d3	l1	l2	Cu-weight 100 pcs./kg	Qty. (pcs.)	Order No.
0.1 – 0.5	yellow	1	2.2	1.2	18	9	0.02	100	1491370000*
0.5 – 1	red	1.7	4	1.9	22.8	11	0.06	100	1491380000
1.5 – 2.5	blue	2.3	4.5	1.9	22.8	11	0.07	100	1491390000
	blau				27	14	0.09	100	1491410000
4 – 6	yellow	3.6	6.4	2.8	27	11	0.15	100	1491420000
10	red	4.5	7.8	2.4 x 4.3	34	12	0.25	50	1491430000*
16	blue	5.8	9.1	2.5 x 5.6	40.7	13.5	0.41	50	1491440000*

\* insulation PA

### Joint connector 0.1 – 6 mm<sup>2</sup> with soldered seam and easy-entry insulation



#### Technical data

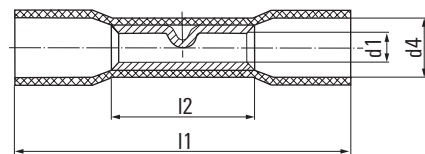
Material:	Cu-HCP (0.1 – 0.5 mm <sup>2</sup> ) or Cu-ETP (0.5 – 6 mm <sup>2</sup> )
Isolation:	PC (resp. *PA)
Surface:	tin plated

#### Ordering data

Cross-section mm <sup>2</sup>	colour of insulation	d1	d4	l1	l2	Cu-weight 100 pcs./kg	Qty. (pcs.)	Order No.
0.1 – 0.5	yellow	1.2	2	12	20	0.02	100	1491540000*
0.5 – 1	red	1.6	4.1	15	25	0.09	100	1491550000
1.5 – 2.5	blue	2.3	4.5	15	26	0.11	100	1491560000
4 – 6	yellow	3.6	6.4	15	27	0.18	100	1491570000

\* insulation PA

### Joint connector 0.14 – 6 mm<sup>2</sup> with heat shrink insulation and lined tubing



#### Technical data

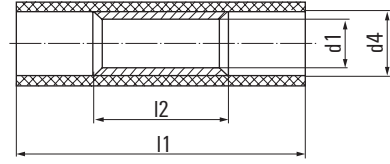
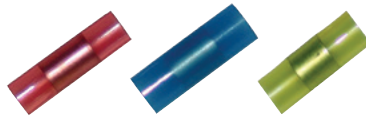
Material:	Cu-ETP tin plated
Isolation:	0.14 – 0.5 mm <sup>2</sup> = Polyolefin 0.5 – 6 mm <sup>2</sup> = Polyethylen
Shrink temperature:	approx. 120 °C

#### Ordering data

Cross-section mm <sup>2</sup>	colour of insulation	d1	d4	l21	l2	Cu-weight 100 pcs./kg	Qty. (pcs.)	Order No.
0.14 – 0.5	yellow	1.4	3.1	11.5	24.5	0.04	50	1491490000
0.5 – 1	red	1.7	4.4	15	36	0.09	50	1491510000
1.5 – 2.5	blue	2.3	5.2	15	36	0.11	50	1491520000
4 – 6	yellow	3.6	6.5	15	41	0.18	20	1491530000

\* insulation PA

Parallel connectors / closed end connectors



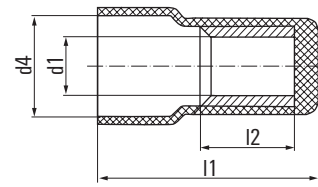
Parallel connectors 0.1 – 6 mm<sup>2</sup>

**Technical data**

Material:	Cu-HCP
Insulation:	PA
Surface:	tin plated

Ordering data

Cross-section mm <sup>2</sup>	colour of insulation	dimensions in mm				Cu- weight 100 pcs./kg	Qty. (pcs.)	Order No.
		d1	d4	l2	l1			
0,1 – 0,5	yellow	1,2	2	5	12	0,01	100	1491450000
0,5 – 1	red	1,7	3,2	7	17	0,04	100	1491460000
1,5 – 2,5	blue	2,3	4	7	17	0,05	100	1491470000
4 – 6	yellow	3,6	5,4	7	21,2	0,09	100	1491480000



Closed end connectors 1.5 – 10 mm<sup>2</sup>  
one side closed

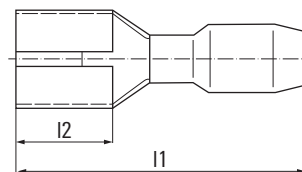
**Technical data**

Material:	Cu-ETP
Insulation:	PA
Surface:	tin plated

Ordering data

Cross-section mm <sup>2</sup>	colour of insulation	dimensions in mm				Cu- weight 100 pcs./kg	Qty. (pcs.)	Order No.
		d1	d4	l21	l2			
1.5 – 2.5	blue transparent	2.3	6.4	8	15.4	0.05	100	1491580000
4 – 6	yellow transparent	3.4	9.2	8.5	17.7	0.09	100	1491590000
10	transparent	5	11.8	8	22	0.15	50	1491610000

\* insulation PA



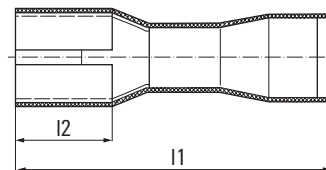
### Cable-lug sleeves 0.5 - 6 mm<sup>2</sup>

#### Technical data

Material:	MS
Insulation:	PVC
Surface:	tin plated

#### Ordering data

Cross-section mm <sup>2</sup>	colour of insulation	dimensions in mm				Cu-weight 100 pcs./kg	Qty. (pcs.)	Order No.
		tab- width	tab- thickness	l1	l2			
0.5 - 1	red	2.8	0.5	19	6.5	0.08	100	1491640000
		2.8	0.8	19	6.5	0.08	100	1491650000
		4.8	0.5	19.4	6.4	0.09	100	1491660000
		4.8	0.8	19.4	6.4	0.09	100	1491670000
1.5 - 2.5	blue	6.3	0.8	20.8	7.5	0.10	100	1491680000
		2.8	0.5	19	6.5	0.08	100	1491730000
		2.8	0.8	19	6.5	0.08	100	1491740000
		4.8	0.5	19.4	6.4	0.09	100	1491690000
		4.8	0.8	19.4	6.4	0.09	100	1491710000
4 - 6	yellow	6.3	0.8	23.3	7.3	0.18	100	1491750000
		9.5	1.2	28.6	12	0.27	100	1491760000



### Cable-lug sleeves 0.5 - 6 mm<sup>2</sup> completely insulated

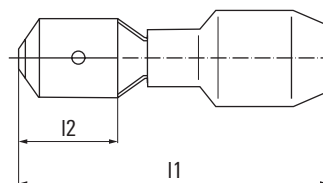
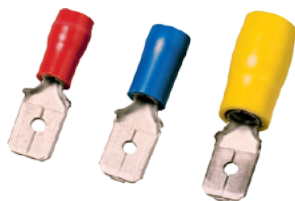
#### Technical data

Material:	Ms
Insulation:	PVC
Surface:	tin plated

#### Ordering data

Cross-section mm <sup>2</sup>	colour of insulation	dimensions in mm				Cu-weight 100 pcs./kg	Qty. (pcs.)	Order No.
		tab- width	tab- thickness	l1	l2			
0.5 - 1	red	2.8	0.5	19.2	6.4	0.08	100	1491860000
		2.8	0.8	19.2	6.4	0.08	100	1491870000
		4.8	0.5	20.2	6.4	0.10	100	1491880000
		4.8	0.8	20.2	6.4	0.10	100	1491890000
		6.3	0.8	21.5	7.3	0.11	100	1491910000
1.5 - 2.5	blue	4.8	0.5	20.2	6.5	0.11	100	1491920000
		4.8	0.8	20.2	6.5	0.11	100	1491930000
		6.3	0.8	21.5	7.3	0.14	100	1491940000
4 - 6	yellow	6.3	0.8	24.2	7.3	0.20	100	1491950000

Cable lug connector / piggy back disconnectors



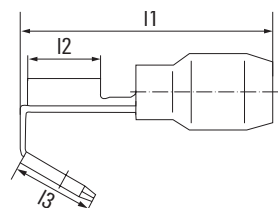
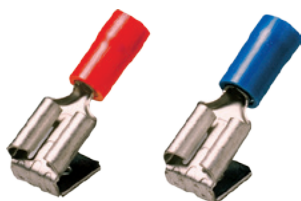
Cable lug connector 0.5 – 6 mm<sup>2</sup>

Technical data

Material:	MS
Insulation:	PVC
Surface:	tin plated

Ordering data

Cross-section mm <sup>2</sup>	colour of insulation	tab- width	dimensions in mm				Cu-weight 100 pcs./kg	Qty. (pcs.)	Order No.
			tab- thickness	I1	I2				
0.5	red	2.8	0.8	19.2	6.5	0.08	100	1491790000	
		4.8	0.8	19.8	6.7				
		6.3	0.8	21.8	7.7				
1.5 - 2.5	blue	4.8	0.8	19.8	6.7	0.09	100	1491850000	
		6.3	0.8	21.8	7.7	0.1	100	1491830000	
4 - 6	yellow	6.3	0.8	24	7.7	0.17	100	1491840000	



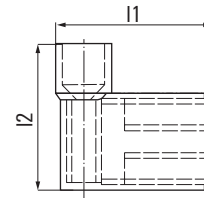
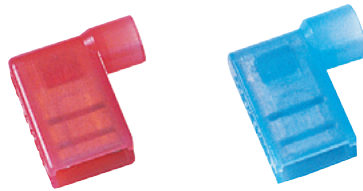
Piggy back disconnectors 0.5 – 2.5 mm<sup>2</sup>

Technical data

Material:	MS
Insulation:	PVC
Surface:	tin plated

Ordering data

Cross-section mm <sup>2</sup>	colour of insulation	tab- width	dimensions in mm				Cu-weight 100 pcs./kg	Qty. (pcs.)	Order No.
			tab- thickness	I1	I2	I3			
0.5 - 1	red	6.3	0.8	23.9	8	8.2	0.15	100	1491770000
1.5 - 2.5	blue	6.3	0.8	23	8	8.2	0.15	100	1491780000



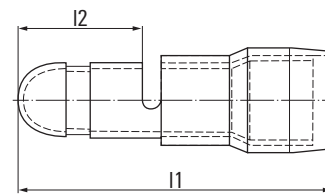
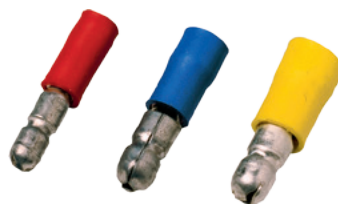
**Flag female disconnectors**  
0.5 – 2.5 mm<sup>2</sup>, completely insulated

**Technical data**

Material:	MS
Insulation:	PVC
Surface:	tin plated

**Ordering data**

Cross-section mm <sup>2</sup>	colour of insulation	dimensions in mm			Cu-weight 100 pcs./kg	Qty. (pcs.)	Order No.	
		tab- width	tab- thickness	l1				l2
0.5 - 1	red	6.3	0.8	16.3	15	0.14	100	1491960000
1.5 - 2.5	blue	6.3	0.8	16.8	15	0.13	100	1491970000



**Circular plug 0.5 – 6 mm<sup>2</sup>**

**Technical data**

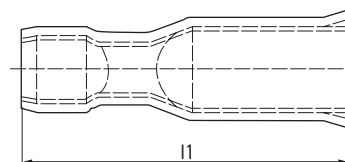
Material:	MS
Insulation:	PVC
Surface:	tin plated

**Ordering data**

Cross-section mm <sup>2</sup>	colour of insulation	pin Ø	dimensions in mm		Cu-weight 100 pcs./kg	Qty. (pcs.)	Order No.
			l1	l2			
0.5 - 1	red	4	21.5	8.5	0.1	100	1492040000
1.5 - 2.5	blue	5	21.2	8.5	0.11	100	1492050000
4 - 6	yellow	5	24	8.5	0.17	100	1492060000



## Round-plug sleeves



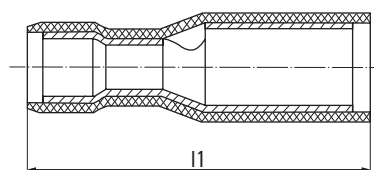
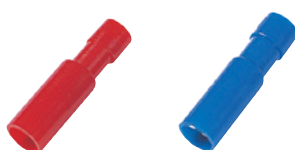
### Round-plug sleeves 0.5 - 6 mm<sup>2</sup>

#### Technical data

Material:	MS
Insulation:	PVC
Surface:	tin plated

#### Ordering data

Cross-section mm <sup>2</sup>	colour of insulation	dimensions in mm		Cu-weight 100 pcs./kg	Qty. (pcs.)	Order No.
		pin Ø	l1			
0.5 - 1	red	4	23.3	0.13	100	1491980000
1.5 - 2.5	blue	5	23.3	0.15	100	1491990000
4 - 6	yellow	5	25.1	0.23	100	1492010000



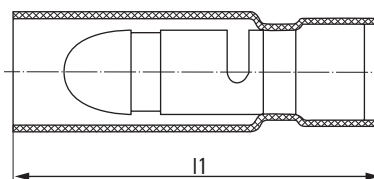
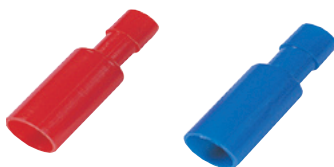
### Round-plug sleeves 0.5 - 2.5 mm<sup>2</sup>, completely insulated

#### Technical data

Material:	MS
Insulation:	PA
Surface:	tin plated

#### Ordering data

Cross-section mm <sup>2</sup>	colour of insulation	dimensions in mm		Cu-weight 100 pcs./kg	Qty. (pcs.)	Order No.
		pin Ø	l1			
0.5 - 1	red	4	25.2	0.12	100	1492020000
1.5 - 2.5	blue	4	25.2	0.13	100	1492030000



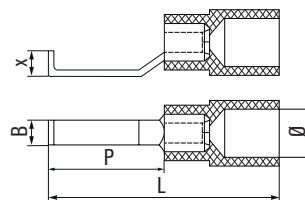
### Round-plug sleeves 0.5 - 6 mm<sup>2</sup>, completely insulated

#### Technical data

Material:	MS
Insulation:	PVC
Surface:	tin plated

#### Ordering data

Cross-section mm <sup>2</sup>	colour of insulation	dimensions in mm		Cu-weight 100 pcs./kg	Qty. (pcs.)	Order No.
		pin Ø	l1			
0.5 - 1	red	4	27	0.13	100	1492070000
1.5 - 2.5	blue	4	27	0.15	100	1492080000



**Insulated hook-type cable lug**

**Technical data**

Material: copper  
 Insulation: PC  
 Surface: tin plated

**Ordering data**

Cross-section mm <sup>2</sup>	colour of insulation	dimensions in mm				Cu- weight 100 pcs./kg	Qty. (pcs.)	Order No.
		Ø	x	L	P			
0.5 - 1.5	red	4	2.1	28.4	17.4	0.74	100	1233340000
0.5 - 1.5	red	4	2.1	28.4	17.4	0.88	100	1312440000
1.5 - 2.5	blue	4.5	2.1	28.2	17.4	1.05	100	1233330000
1.5 - 2.5	blue	4.5	2.1	28.2	17.4	0.88	100	1312450000
4.0 - 6.0	yellow	6.4	2.8	30.2	17.2	1.59	100	1312470000
4.0 - 6.0	yellow	6.4	2.8	30.2	17.2	1.825	100	1216230000



# Crimping tools

<b>Crimping tools</b>	Introduction / Mechanical and electro-hydraulic crimping tools	B.2
	Crimping tools CTI 6 G + CTI 6 / HTI 15 + HTN 21 / CTN 25 D 4	B.8
	Crimping tools PZ PK 6/70 and PZ RK 6/70	B.11
	Crimping tools PZ PK 10/120 and PZ RK 10/120	B.12
	Crimping tools MTR 35	B.13
	Crimping tools EPG 45 and MTR 110	B.15
	Crimping tools MTR 160 and MTR 300	B.19
	Crimping tools APG 55 and HPG 55	B.21
	Crimping tools APG 80 and HPG 80	B.24
	Battery-powered hydraulic cable cutter AKT 50	B.28
	Battery / Battery charger	B.29

## Mechanical and electro-hydraulic crimping tools

The precision tools from Weidmüller are worldwide in use. This is a responsibility Weidmüller takes seriously, offering comprehensive services to support this global use.

### B

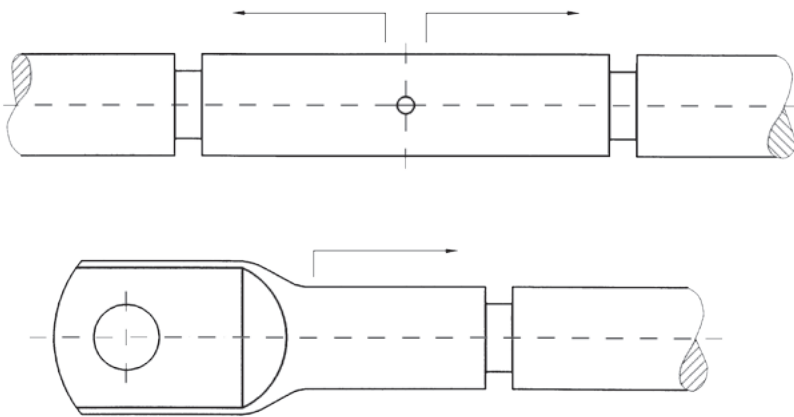
Tools in daily use should always guarantee consistent processing quality even after many working cycles. Weidmüller offers its customers the service of „Tool-Certification“. With this technical test procedure Weidmüller guarantees for the functionality and quality of its tools.



# Assembly of cable lugs and connectors

## general

1. Take the measurements of the cable lugs / connectors and their allocation of cross section out of this catalogue.
2. Cut the cable right-angled to the conductor. Strip off the insulation of the cable. The part to be stripped of has to be as long as the sleeve (measurement a) of the cable lug / connector + about 10 %.
3. Before crimping clean the conductor with a wire brush in order to remove dirt and oxidation. Sectorshaped conductors must be rounded before crimping!
4. Insert the noninsulated conductor into the compression sleeve until it reaches the wire stop.
5. Before starting to crimp please check whether conductor and cable lug respectively connector have the same cross section and do fit to each other according to our catalogue.
6. Please check whether crimping tool and crimping dies are suitable for the cable lugs/connectors you want to crimp. You can take this information for each series and cross section from the manufacturer's catalogue or the operating instructions of the tool.
7. The crimping process is evaluated, on the cable lug and connector, from the cable end to the end of the sleeve.(see illustration).



For the quantity of crimpings take notice of the preceding charts.  
(These you are able to find on the following page)

# Crimping instructions for euro-series

## Crimping instructions

Minimum necessary crimping quantity of cable lugs and connectors for euro-series. (WM-crimping):

B

## Crimping tools and order numbers

Cross section in mm	crimping quantity x width	PZ RK 6/70 1500440000	PZ RK 10/120 1500450000	MTR 35 9017500000	MTR 110 9018020000	EPG 45 1500830000	HPG 55 1501400000	APG 55 1501390000	HPG 80 1502420000	APG 80 1502390000
6	1 x 5 mm									
	1 x 7 mm									
10	1 x 5 mm									
	1 x 7 mm									
16	2 x 5 mm									
	1 x 7 mm									
25	2 x 5 mm									
	1 x 12 mm									
35	2 x 5 mm									
	1 x 10 mm									
	1 x 12 mm									
50	2 x 5 mm									
	1 x 12 mm									
70	2 x 5 mm									
	1 x 12 mm									
95	2 x 5 mm									
	1 x 12 mm									
120	3 x 5 mm									
	2 x 7 mm									
	1 x 10 mm									
150	3 x 5 mm									
	2 x 7 mm									
185	3 x 5 mm									
	2 x 7 mm									
	2 x 10 mm									
240	3 x 5 mm									
	3 x 7 mm									
	2 x 10 mm									
300	4 x 5 mm									
	3 x 7 mm									
	2 x 13 mm									

# Crimping instructions for DIN 46235-series and DIN 46267-series

## Crimping instructions

Minimum necessary crimping quantity of cable lugs and connectors  
for DIN 46235-series and DIN 46267-series (Hexagonal-shape-crimping):

## Crimping tools and order numbers

cross section in mm	die code	crimping quantity x width	PZ PK 6/70 1500470000	PZ PK 10/120 1500480000	MTR 35 9017500000	MTR 110 9018020000	EPG 45 1500830000	HPG 55 1501400000	APG 55 1501390000	HPG 80 1502420000	APG 80 1502390000
6	5	1 x 5 mm									
		1 x 7 mm									
10	6	1 x 5 mm									
		1 x 7 mm									
16	8	2 x 5 mm									
		1 x 12 mm									
25	10	2 x 5 mm									
		1 x 12 mm									
35	12	2 x 5 mm									
		1 x 10 mm									
		1 x 12 mm									
50	14	3 x 5 mm									
		1 x 12 mm									
70	16	3 x 5 mm									
		1 x 12 mm									
95	18	3 x 5 mm									
		4 x 5 mm									
		2 x 10 mm									
120	20	3 x 5 mm									
		4 x 5 mm									
		2 x 10 mm									
150	22	4 x 5 mm									
		2 x 10 mm									
185	25	4 x 5 mm									
		2 x 10 mm									
240	28	4 x 5 mm									
		2 x 13 mm									
300	32	4 x 5 mm									
		4 x 7 mm									
		2 x 13 mm									



# Traction - specified value

cross section mm <sup>2</sup>	Values for crimpings up to 10 mm <sup>2</sup> (except end ferrules) (EN 60352 part 2 release 10/2002)			Values for aluminium crimpings from 16 mm <sup>2</sup> (VDE 0220 part 100 cross-section x 40)		
	traction 100 %	130 %	150 %	traction 100 %	130 %	150 %
0,2				28 N		
0,34				40 N		
0,5	60 N	78 N	90 N	56 N		
0,75	85 N	111 N	128 N	84 N		
1	108 N	140 N	162 N	108 N		
1,5	150 N	195 N	225 N	150 N		
2,5	230 N	299 N	345 N	230 N		
4	310 N	403 N	465 N	310 N		
6	360 N	468 N	540 N	360 N		
10	380 N	494 N	570 N			
	Values for copper crimpings from 10 mm <sup>2</sup> DIN EN 61238-1 release 3/2004 except end ferrules (VDE 0220 part 100 cross-section x 60) calculation:			Values for aluminium crimpings from 16 mm <sup>2</sup> (VDE 0220 part 100 cross-section x 40) calculation:		
	traction 100 %	130 %	150 %	traction 100 %	130 %	150 %
10	600 N	780 N	900 N	640 N	832 N	960 N
16	960 N	1.248 N	1.440 N	1.000 N	1.300 N	1.500 N
25	1.500 N	1.950 N	2.250 N	1.400 N	1.820 N	2.100 N
35	2.100 N	2.730 N	3.150 N	2.000 N	2.600 N	3.000 N
50	3.000 N	3.900 N	4.500 N	2.800 N	3.640 N	4.200 N
70	4.200 N	5.490 N	6.300 N	3.800 N	4.940 N	5.700 N
95	5.700 N	7.410 N	8.550 N	4.800 N	6.240 N	7.200 N
120	7.200 N	9.360 N	10.800 N	6.000 N	7.800 N	9.000 N
150	9.000 N	11.700 N	13.500 N	7.400 N	9.620 N	11.100 N
185	11.100 N	14.430 N	16.650 N	9.600 N	12.480 N	14.400 N
240	14.400 N	18.720 N	21.600 N	12.000 N	15.600 N	18.000 N
300	18.000 N	23.400 N	27.000 N	16.000 N	20.800 N	24.000 N
400	24.000 N*			20.000 N	26.000 N	30.000 N
500	30.000 N*			25.000 N*		
625	37.500 N*			32.000 N*		
800	48.000 N*					
1.000	60.000 N*					

Note: \* The maximum value of VDE 2002 T100 is 20.000 N!

To pass the test according to the norm, the conductor in the crimping connection may not slide by 100 % of the traction during 60 seconds holding time.



**Crimping tools for other contacts**

- Ratchet for precise crimping
- Release option in the event of incorrect operation
- With end stop for exact positioning of the contacts

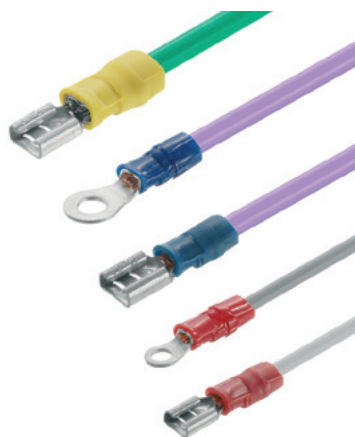
**CTI 6 G**

0,5...6 mm<sup>2</sup>



For PVC-, PC- and polyamide-insulated connectors

- ~AWG 21...10
- Parallel crimp profile for crimping contact and insulation in one step



**CTI 6**

0,5...6 mm<sup>2</sup>



For PVC-, PC- and polyamide-insulated connectors

- ~AWG 21...10
- Double-crimp profile for crimping contact and insulation in one step



**Technical data**

Description of contact	
Type of contact	
Crimping range	mm <sup>2</sup>
Crimping range 1 (with multiple crimping positions)	mm <sup>2</sup>
Crimping range 2 (with multiple crimping positions)	mm <sup>2</sup>
Crimping range 3 (with multiple crimping positions)	mm <sup>2</sup>
Plug width	mm
Tool data	
Length	mm
Weight	g
Note	

**Ordering data**

Version
Note

CTI 6 G		
Insulated connector		
Crimping range	0.5...6	
Crimping range 1 (with multiple crimping positions)	0.5...1.5	
Crimping range 2 (with multiple crimping positions)	1.1...2.5	
Crimping range 3 (with multiple crimping positions)	2.6...6	
Plug width	mm	
Tool data		
Length	250	
Weight	747	
Note		

Type	Qty.	Order No.
CTI 6 G	1	9202850000
CTI 6 G ZERT	1	1292880000
Note		

CTI 6		
Insulated connector		
Crimping range	0.5...6	
Crimping range 1 (with multiple crimping positions)	0.5...1.5	
Crimping range 2 (with multiple crimping positions)	1.1...2.5	
Crimping range 3 (with multiple crimping positions)	2.6...6	
Plug width	mm	
Tool data		
Length	250	
Weight	730	
Note		

Type	Qty.	Order No.
CTI 6	1	9006120000
CTI 6 ZERT	1	9017290000
Note		

**Crimping tools for other contacts**

- Ratchet for precise crimping
- Release option in the event of incorrect operation
- With end stop for exact positioning of the contacts
- Tested according to DIN EN 60352 Part 2

**HTI 15**

0.5...2.5 mm<sup>2</sup>



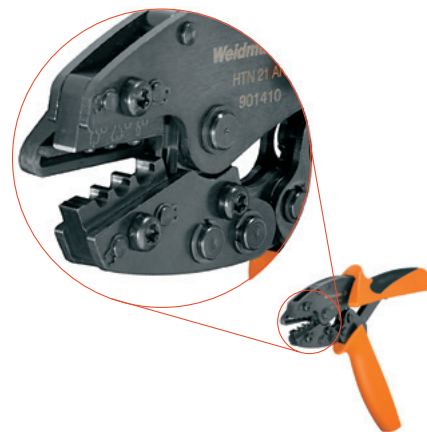
For PVC-, PC- and polyamide-insulated connectors

- ~AWG 21...14
- Double-crimp profile, for crimping contact and insulation in one step



**HTN 21**

0.5...6 mm<sup>2</sup>



For uninsulated cable lugs and connectors

- ~AWG 21...10
- Rolled cable lugs, for example acc. to DIN 46234
- Tubular cable lugs
- Pin cable lugs
- Parallel and serial connectors
- Indent crimping
- Alternatively available with or without pivoting end stop



**Technical data**

Description of contact	
Type of contact	
Crimping range	mm <sup>2</sup>
Crimping range 1 (with multiple crimping positions)	mm <sup>2</sup>
Crimping range 2 (with multiple crimping positions)	mm <sup>2</sup>
Crimping range 3 (with multiple crimping positions)	mm <sup>2</sup>
Plug width	mm
Tool data	
Length	mm
Weight	g
Note	

**Ordering data**

Version
Note

HTI 15		
Insulated connector		
Crimping range	0.5...2.5	
Crimping range 1 (with multiple crimping positions)	0.5...1.5	
Crimping range 2 (with multiple crimping positions)	1.1...2.5	
Crimping range 3 (with multiple crimping positions)		
Plug width		
Tool data		
Length	200	
Weight	434	
Note		

Type	Qty.	Order No.
HTI 15	1	9014400000
HTI 15 ZERT	1	9017430000
Note		

HTN 21		HTN 21 M. AN.	
Uninsulated connection		Uninsulated connection	
Crimping range	0.5...6	Crimping range	0.5...6
Crimping range 1 (with multiple crimping positions)	0.5...1.5	Crimping range 1 (with multiple crimping positions)	0.5...1.5
Crimping range 2 (with multiple crimping positions)	1.1...2.5	Crimping range 2 (with multiple crimping positions)	1.1...2.5
Crimping range 3 (with multiple crimping positions)	2.6...6	Crimping range 3 (with multiple crimping positions)	2.6...6
Plug width		Plug width	
Tool data		Tool data	
Length	200	Length	200
Weight	427	Weight	427
Note			
End stop for secure contact positioning in tool			

Type	Qty.	Order No.
HTN 21	1	9014610000
HTN 21 ZERT	1	9017380000
HTN 21 M. AN	1	9014100000
HTN 21 M. AN ZERT	1	9017170000
Note		

**Crimping tools for other contacts**

- Ratchet for precise crimping
- Release option in the event of incorrect operation

**CTN 25 D 5**

10...25 mm<sup>2</sup>



For uninsulated cable lugs and connectors

- ~AWG 8...4
- Rolled cable lugs, acc. to DIN 46234
- Pin cable lugs
- Parallel and serial connectors
- Hexagon crimping



**Technical data**

Description of contact	
Type of contact	
Crimping range	mm <sup>2</sup>
Crimping range 1 (with multiple crimping positions)	mm <sup>2</sup>
Crimping range 2 (with multiple crimping positions)	mm <sup>2</sup>
Crimping range 3 (with multiple crimping positions)	mm <sup>2</sup>
Plug width	mm
Tool data	
Length	mm
Weight	g
Note	

CTN 25 D5	
Uninsulated connection	
10...25	
10	
16	
25	
250	
730	

**Ordering data**

Version
Note

Type	Qty.	Order No.
CTN 25 D5	1	9006230000
CTN 25 D5 ZERT	1	1292870000
Note		

**Crimping tool**

The cross section can be adjusted by turning the in-built revolving dies. So there is no need of changing dies. Furthermore this tool points by small measurements, light weight, optimized transmission ratio and an extremely high crimping quality due to precisely guided dies.

**PZ PK 6/70**



Crimping tool for crimping compression cable lugs DIN 46235, compression connectors DIN 46267, aluminium cable lugs and connectors.

Crimping profile: hexagonal-shape with control embossing

**PZ RK 6/70**



Crimping tool for crimping tubular cable lugs and connectors of the euro-series

Crimping profile: all around WM Style Crimp with control embossing



**Technical data**

Application range	
Cu	
Alu	
Crimping width	mm
Tool data	
Length	mm
Weight	g
Note	

PZ PK 6/70		
Cu	=	6...70 mm <sup>2</sup> (K 5 - K 16)
Alu	=	10...50 mm <sup>2</sup> (K 10 - K 16)
Crimping width		5
Length		515
Weight		2000
Note		

PZ RK 6/70		
Cu	=	6...70 mm <sup>2</sup>
Crimping width		5
Length		515
Weight		2000
Note		

**Ordering data**

Version	
Note	

Type	Qty.	Order No.
PZ PK 6/70	1	1500470000
Note		

Type	Qty.	Order No.
PZ RK 6/70	1	1500440000
Note		

**Crimping tools**

The cross section can be adjusted by turning the in-built revolving crimp insert. So there is no need of changing crimp inserts.

**PZ PK 10/120**



Crimping tool for crimping compression cable lugs DIN 46235, compression connectors DIN 46267, aluminium cable lugs and connectors

Crimping profile: hexagonal-shape with control embossing

**PZ RK 10/120**



Crimping tool for crimping tubular cable lugs and connectors of the euro-series. Furthermore this tool points by small measurements, light weight and an extremely high crimping quality due to WM-crimping.

Crimping profile: all around WM Style Crimp with control embossing



**Technical data**

<b>Application range</b>	
Cu	
Alu	
Crimping width	mm
<b>Tool data</b>	
Length	mm
Weight	g
<b>Note</b>	

<b>PZ PK 10/120</b>		
Cu	= 10...20 mm <sup>2</sup> (K 6 - K 20)	
Alu	= 10 ..70 mm <sup>2</sup> (K 10 - K 18)	
Crimping width	5	
Length	660	
Weight	4100	
<b>Note</b>		

<b>PZ RK 10/120</b>		
Cu	= 10...120 mm <sup>2</sup>	
Crimping width	5	
Length	660	
Weight	4100	
<b>Note</b>		

**Ordering data**

<b>Version</b>	
<b>Note</b>	

Type	Qty.	Order No.
PZ PK 10/120	1	1500480000
<b>Note</b>		

Type	Qty.	Order No.
PZ RK 10/120	1	1500450000
<b>Note</b>		

**Crimping tools for connectors**

- For insulated and uninsulated cable lugs and connectors
- Mechanical function ensures safe and manageable operations under different environmental conditions
- Precision engineering means a high pressing force with little physical effort
- Fast feed helps pre-centreing and extraction of the connecting parts
- Ratchet for high-quality, flawless crimping
- Release option in the event of incorrect operation
- Comprehensive range of standard-compliant crimp inserts

**MTR 35**

6...50 mm<sup>2</sup>



- ~AWG 16...0000
- Tubular cable lugs from 6...50 mm<sup>2</sup>
- Wire-end ferrules from 6...50 mm<sup>2</sup>
- Retractable head for easy withdrawal of crimped connection



**Technical data**

Description of contact	
Pressing force / Deviation	kN/mm
Crimping range for copper tube connector	mm <sup>2</sup>
Crimping range for insulated connectors	mm <sup>2</sup>
Crimping range of wire end ferrule	mm <sup>2</sup>
Tool data	
Length / Weight	mm/kg
Note	

MTR 35	
25 / 8	
6...50	
10...25	
25...50	
270 / 1.3	
For more details see crimp inserts on the following pages	

**Ordering data**

Version
Note

Type	Qty.	Order No.
MTR 35	1	9017500000
Note		

**Accessories**

Note

Type	Qty.	Order No.
MTR 35	1	9017840000
Crimping inserts see on the following pages		



**Crimping inserts WM-shape**

- for crimping cable lugs and connectors of the euro-series

**Ordering data**

mm <sup>2</sup>	Crimp. width mm	Order No.
6	5	1500490000
10	5	1500500000
16	5	1500520000
25	5	1500530000
35	5	1500540000
50	5	1500550000



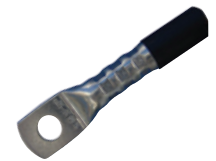
**B**

**Crimping inserts hexagonal-shape**

- for crimping compression copper cable lugs DIN 46 235
- compression copper connectors DIN 46 267 part 1
- aluminium and aluminium/ copper cable lugs and connectors

**Ordering data**

Code no.	Cu mm <sup>2</sup>	Al mm <sup>2</sup>	Crimp. width mm	Order No.
5	6	-	5	1500580000
6	10	-	5	1500590000
8	16	-	5	1500600000
10	25	10	5	1500620000
12	35	16+25	5	1500630000
14	50	35	5	1500640000



**Indent Crimping inserts**

- for compression terminals DIN 46234
- pin cable lugs DIN 46230
- connector DIN 46341 part 1

**Ordering data**

mm <sup>2</sup>	Crimp. width mm	Order No.
6	5	1500650000
10	7	1500670000
16	10	1500680000
25	10	1500690000
35	10	1500700000



**Crimping inserts**

- for insulated compression terminals

**Ordering data**

mm <sup>2</sup>	Crimp. width mm	Order No.
10	7	1500720000
16	7	1500730000
25	10	1500740000

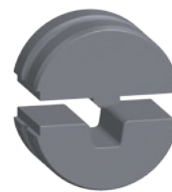


**Crimping inserts square-shape**

- for insulated and non insulated wire-end ferrules
- crimping width 18 mm

**Ordering data**

mm <sup>2</sup>	Crimp. width mm	Order No.
6	18	1500750000
10	18	1500770000
16	18	1500780000
25	18	1500790000
35	18	1500800000
50	18	1500820000



## Hydraulic battery crimping tool 45 kN

Battery-powered hydraulic compression hand-crimping tool for crimp cable lugs and connectors up to 150 mm<sup>2</sup>.

- extremely quick processing due to a three-stage axial piston pump
- wide application range up to 150 mm<sup>2</sup>
- 270° revolving head with quick opening and closing
- because of a flap closure easy working also in places with difficult access
- automatic pressure limits and monitoring through pressure sensor
- engine shutdown and automatic retract after completed pressing
- electronic regulation and supervision of the press process
- manual retract
- save of all crimps and error messages on internal memory
- selections of all cycles and error messages about USB interface
- no uncompleted pressing cycles through ongoing monitoring of the rest battery cargo load
- controlled engine drive to the life extension of gearbox, engine and battery
- integrated service management and software updates about the USB interface
- fast tool return pipe through high return flow volume
- sleep-mode; maintenance indication and battery control
- integrated, intelligent electronics assembly with multifunctional LED
- mini-USB interface for all standard computer systems for:
  - Crimping force graph and error indication
  - Service Check up
- Li-Ion battery with charge level indicator: 18 V 1.5 Ah

## EPG 45

6...150 mm<sup>2</sup>



### Included in delivery

- Hydraulic tool including 1x battery and 1x battery charger
- Manual
- Software
- USB connection cable
- Carrying bag for tool and Crimping inserts



## Technical data

Description of contact	
Press capacity / piston stroke	kN/mm
<b>Tool data</b>	
Length x width x height / weight	mm/kg
<b>Note</b>	

## Ordering data

Version
<b>Note</b>

## Accessories

Replacement battery - Li-Ion 18 V, 1.5 Ah
<b>Note</b>

EPG 45	
45 / 16	
<b>Type</b>	
370 x 123 x 80 / 2.3	

Type	Qty.	Order No.
EPG 45	1	1500830000
EPG 45 120 V	1	1508780000
<b>Note</b>		

Type	Qty.	Order No.
AKKU EPG 45	1	1500840000
Ladegerät EPG	1	1509370000
Ladegerät EPG 120 V	1	1509380000
<b>Note</b>		

Range of application	Ø mm <sup>2</sup>
Crimping inserts WM-shape for euro-series	6 - 150
Hexagonal crimping inserts for compression cable lugs (DIN 46235) + connectors (DIN 46267)	6 - 150 (K5-K22)
Mandrel crimping inserts for compression terminals DIN 46234	6 - 50
Crimping inserts for insulated compression terminals	10 - 50
Crimping inserts square-shape for insulated and non insulated wire-end ferrules	6 - 50
Rounding crimping inserts for rounding sector-shaped copper and aluminium conductors	10 - 150

**Crimping tools for connectors**

- For insulated and uninsulated cable lugs and connectors
- Mechanical function ensures safe and manageable operations under different environmental conditions
- Precision engineering means a high pressing force with little physical effort
- Fast feed helps pre-centreing and extraction of the connecting parts
- Ratchet for high-quality, flawless crimping
- Release option in the event of incorrect operation
- Comprehensive range of standard-compliant crimp inserts

**MTR 110**

6...120 mm<sup>2</sup>



- ~AWG 16...0000
- Tubular cable lugs from 6...120 mm<sup>2</sup>
- Wire-end ferrules from 6...50 mm<sup>2</sup>
- Retractable head for easy withdrawal of crimped connection



**Technical data**

Description of contact	
Pressing force / Deviation	kN/mm
Crimping range for copper tube connector	mm <sup>2</sup>
Crimping range for insulated connectors	mm <sup>2</sup>
Crimping range of wire end ferrule	mm <sup>2</sup>

Tool data	
Length / Weight	mm/kg

**Note**

**Ordering data**

Version

**Note**

**Accessories**

Type	Qty.	Order No.
MTR 110	1	9018020000

**Note**

MTR 110	
55 / 10	
6...120	
10...16	
6...50	
420 / 2	

For more details see crimp inserts on the following pages

Type	Qty.	Order No.
MTR 110	1	9018020000

Type	Qty.	Order No.
MTR 110	1	9018040000

Crimping inserts see on the following pages

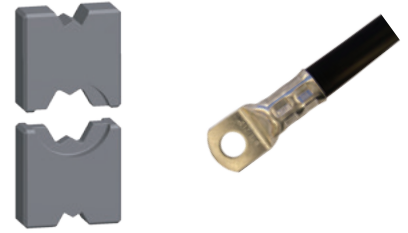
**Crimping inserts WM-shape**

- for crimping cable lugs and connectors of the euro-series

**Ordering data**

mm <sup>2</sup>	Crimp. width mm	Order No.
6	7	1500850000
10 / 70	7 / 5	1500870000
16 / 35	7 / 10	1500920000
25 / 50	12 / 5	1500880000
95	5	1500890000
120	5	1500900000
150*	5	on request

\* only EPG 45

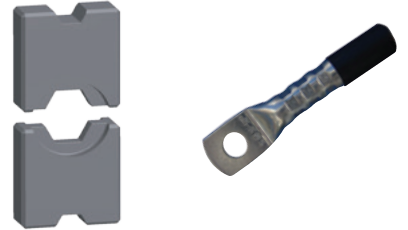
**Crimping inserts hexagonal-shape**

- for crimping compression copper cable lugs DIN 46 235
- compression copper connectors DIN 46 267 part 1
- aluminium and aluminium/copper cable lugs and connectors

**Ordering data**

Code no.	Cu mm <sup>2</sup>	Al mm <sup>2</sup>	Crimp. width mm	Order No.
5	6	-	7	1500930000
6 / 16	10 / 70	- / 50	7 / 5	1500940000
8 / 12	16 / 35	- / 16 + 25	12 / 10	1500950000
10 / 14	25 / 50	10 / 35	12 / 5	1500970000
18	95	70	5	1500980000
20	120	-	5	1500990000
22	150*	-	5	on request

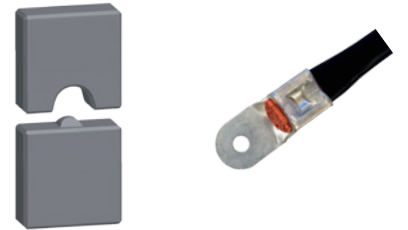
\* only EPG 45

**Indent Crimping inserts**

- for compression terminals DIN 46234
- pin cable lugs DIN 46230
- connector DIN 46341 part 1

**Ordering data**

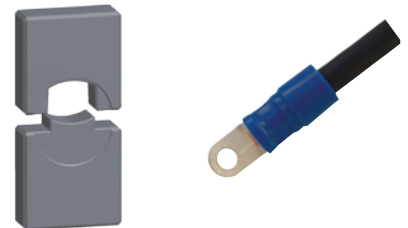
mm <sup>2</sup>	Crimp. width mm	Order No.
6	6	1501290000
10	8	1501320000
16	10	1501330000
25	12	1501340000
35	12	1501350000
50	12	1501370000
70	12	1501380000

**Crimping inserts**

- for insulated compression terminals

**Ordering data**

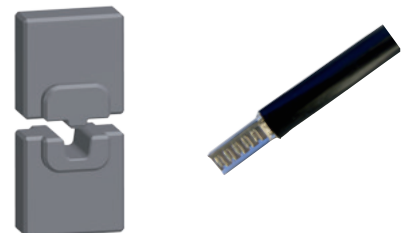
mm <sup>2</sup>	Crimp. width mm	Order No.
10	7	1501000000
16	7	1501020000

**Crimping inserts square-shape**

- for insulated and non insulated wire-end ferrules
- crimping width 19 mm

**Ordering data**

mm <sup>2</sup>	Crimp. width mm	Order No.
6	19	1501030000
10	19	1501040000
16	19	1501050000
25	19	1501070000
35	19	1501170000
50	19	1501180000



**Prerounding die sets**

- for rounding sector-shaped copper and aluminium conductors crimping width: 12 mm

sm = stranded conductors

se = solid conductors

**Ordering data**

mm <sup>2</sup> sm	mm <sup>2</sup> se	Crimp. width mm	Order No.
10	-	12	1501190000
16	-	12	1501200000
25	35	12	1501220000
35	50	12	1501230000
50	70	12	1501240000
70	95	12	1501250000
95	120	12	1501270000
120	150	12	1501280000



**Crimping tools for connectors**

- For insulated and uninsulated cable lugs and connectors
- Mechanical function ensures safe and manageable operations under different environmental conditions
- Precision engineering means a high pressing force with little physical effort
- Fast feed helps pre-centreing and extraction of the connecting parts
- Ratchet for high-quality, flawless crimping
- Release option in the event of incorrect operation
- Comprehensive range of standard-compliant crimp inserts

**MTR 160**

10...240 mm<sup>2</sup>



- ~AWG 8
- Tubular cable lugs from 10...240 mm<sup>2</sup>

**MTR 300**

10...300 mm<sup>2</sup>



- ~AWG 8
- Tubular cable lugs from 10...300 mm<sup>2</sup>
- Retractable head for easy withdrawal of crimped connection
- Turntable presses: 25...240 sm; 35...240 se

**Technical data**

Description of contact	
Pressing force / Deviation	kN/mm
Crimping range for copper tube connector	mm <sup>2</sup>
Crimping range for insulated connectors	mm <sup>2</sup>
Tool data	
Length / Weight	mm/kg
Note	

**Ordering data**

Version
Note

**Accessories**

Type	Qty.	Order No.
MTR 160	1	9017270000
Note		

MTR 160		
Pressing force / Deviation	100 / 16	
Crimping range for copper tube connector		
Crimping range for insulated connectors		
Tool data		
Length / Weight	540 / 4	
Note		
For more details see crimp inserts on the following pages sm: sector conductor stranded; se: sector single conductor		

Type	Qty.	Order No.
MTR 160	1	9017250000
Note		


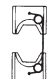
Type	Qty.	Order No.
MTR 160	1	9017270000
Note		
Crimping inserts see on the following pages		

MTR 300		
Pressing force / Deviation	100 / 16	
Crimping range for copper tube connector	10...300	
Crimping range for insulated connectors	10...120	
Tool data		
Length / Weight	540 / 4	
Note		
For more details see crimp inserts on the following pages sm: sector conductor stranded; se: sector single conductor		



Type	Qty.	Order No.
MTR 300	1	9021390000
Note		


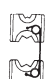
Type	Qty.	Order No.
MTR 300	1	9021420000
Note		
Crimping inserts see on the following pages		


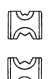
**MTR 160**


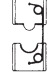

	Cross-section [mm <sup>2</sup> ]	Code to DIN 48083	Crimping width [mm]	Order No.
<b>Die sets for copper tube cable lugs and connectors DIN 46235</b>				
	10	6	7,0	9020900000
	16	8	7,0	9020910000
	25	10	7,0	9020920000
	35	12	7,0	9020930000
	50	14	7,0	9020940000
	70	16	7,0	9020950000
	95	18	7,0	9020960000
	120	20	7,0	9020970000
	150	22	7,0	9020980000
	185	25	7,0	9020990000
	240	28	7,0	9021000000


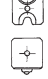


**MTR 300**


	Cross-section [mm <sup>2</sup> ]	Code to DIN 48083	Crimping width [mm]	Order No.
<b>Die sets for copper tube cable lugs and connectors DIN 46235</b>				
	10	6	7,0	9021430000
	16	8	7,0	9021440000
	25	10	7,0	9021450000
	35	12	7,0	9021460000
	50	14	7,0	9021470000
	70	16	7,0	9021480000
	95	18	7,0	9022290000
	120	20	7,0	9022300000
	150	22	7,0	9022310000
	185	25	7,0	9022320000
	240	28	7,0	9022330000
	300	32	7,0	9022340000


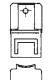
	Cross-section [mm <sup>2</sup> ]	Crimping width [mm]	Order No.
<b>Die sets for copper tube cable lugs and connectors standard Types</b>			
	10/25	9,8	9021750000
	16/35	9,8	9021760000
	50	8,0	9021770000
	70	8,0	9021780000
	95	8,0	9021790000
	120	8,0	9021800000
	150	8,0	9021810000
	185	8,0	9021820000
	240	8,0	9021830000


	Cross-section [mm <sup>2</sup> ]	Crimping width [mm]	Order No.
<b>Die sets for copper tube cable lugs and connectors standard Types</b>			
	10/25	9,8	9024010000
	16/35	9,8	9024400000
	50	8,0	9024410000
	70	8,0	9024420000
	95	8,0	9024430000
	120	8,0	9025210000
	150	8,0	9025220000
	185	8,0	9025230000
	240	8,0	9028020000



	Cross-section [mm <sup>2</sup> ]	Order No.
<b>Die sets for insulated cable lugs and connectors, DIN 46234, DIN 46230</b>		
	10	9021300000
	16	9021310000
	25	9021320000
	35	9021330000
	50	9021340000
	70	9021350000
	95	9021360000
	120	9021370000
	150	9021380000
	with control mark	

	Cross-section [mm <sup>2</sup> ]	Order No.
<b>Stamp and dies for copper cable lugs and connectors, DIN 46234, DIN 46230</b>		
	<b>2-way die</b>	
	16/35	9022360000
	10/70	9022350000
	25/50	9022370000
	<b>Stamp</b>	
	10 - 70	9022990000
	<b>Single die</b>	
	95	9022380000
	120	9022390000
	150	9022400000
	<b>Stamp</b>	
	95-150	9023110000

	Cross-section [mm <sup>2</sup> ]	Order No.
<b>Die sets for insulated cable lugs and connectors, DIN 46231, 46237</b>		
	10	9016180000
	16	9016190000
	25	9016200000
	35	9016210000
	50	9016220000
	70	9016230000
	95	9016240000
	120	9016250000

	Cross-section [mm <sup>2</sup> ]	Order No.
<b>Die sets for insulated cable lugs and connectors, DIN 46231, 46237</b>		
	10	9016180000
	16	9016190000
	25	9016200000
	35	9016210000
	50	9016220000
	70	9016230000
	95	9016240000
	120	9016250000

	Cross-section [mm <sup>2</sup> ]	Order No.
<b>Prerounding die sets Cu/Al for sectored cable</b>		
	25 sm/35 se	9016260000
	35 sm/50 se	9016270000
	50 sm/70 se	9016280000
	70 sm/95 se	9016290000
	95 sm/120 se	9016370000
	120 sm/150 se	9016380000
	150 sm/185 se	9016390000
	185 sm/240 se	9016440000

	Cross-section [mm <sup>2</sup> ]	Order No.
<b>Prerounding die sets Cu/Al for sectored cable</b>		
	25 sm/35 se	9016260000
	35 sm/50 se	9016270000
	50 sm/70 se	9016280000
	70 sm/95 se	9016290000
	95 sm/120 se	9016370000
	120 sm/150 se	9016380000
	150 sm/185 se	9016390000
	185 sm/240 se	9016440000

### Battery-powered compression tool APG 55

Battery-powered hydraulic compression tool for crimping cable lugs and connectors up to 240 mm<sup>2</sup>.

- extremely quick processing due to a two-stage hydraulic pump
- 270° revolving head with quick opening and closing
- integrated pressure relief valve, false pressings cause no damage at tool nor dies
- Pressure-relief-button in one-hand operation is able to press from both sides. (for right-and left handed persons)
- integrated overpressure valve, in case of wrong pressings, no damage of tools or inserts
- lithium-ion-battery without memory effect, self discharges very low
- high capacity due 3.0 Ah battery
- fastening eye for balance and carrying strap available
- ergonomic handle with a balanced weight distribution for sure work free of tiredness
- case, handle shell and pressure discharge key completely from isolated and push-firm plastic material
- universal usage: dies for all versions of cable lugs and connectors are available
- integrated electronic module for:
  - permanent accumulator-loading state control
  - supervision of the working process and state announcement
  - announcement of the next service intervall
  - mistake announcement at possible disturbances

### APG 55

6...240 mm<sup>2</sup>



Included in delivery

- Battery-powered compression tool with battery and battery charger
- supporting loop for transport and safety
- transport plastic case



### Technical data

Description of contact	
Press capacity	kN
Operating voltage	Volt
Battery charger	
Time of loading	

Tool data	
Length x width x height / weight	mm/kg
<b>Note</b>	

### Ordering data

Version

Note

### Accessories

Replacement battery - Li-Ion 18 V, 1.5 Ah
---

Note

APG 55	
approx. 55	
14.4	
220-240V 50-60Hz 7.2-18V	
approx. 50 minutes	

95 x 350 x 310 mm / 3.6 kg (incl. battery)
--

Type	Qty.	Order No.
APG 55	1	1501390000
APG 55 120 V	1	1508790000

Type	Qty.	Order No.
Ersatz Akku APG	1	1502140000
Ladegerät APG	1	1502170000
Ladegerät APG 120 V	1	1509390000



**Crimping tools APG 55 and HPG 55**

**Hand-operated hydraulic crimping tool HPG 55**

Hand-operated hydraulic crimping tool for crimping cable lugs and connectors up to 240 mm<sup>2</sup>.

- extremely quick processing due to a two-stage hydraulic pump
- because of a flap closure easy working also in places with difficult access
- extremely light, handy and compact construction form
- integrated pressure relief valve, false pressings cause no damage at tool nor dies
- universal usage: dies for all versions of cable lugs are available
- delivery completely transport plastic case

**HPG 55**

6...240 mm<sup>2</sup>



- 180° revolving head with quick opening and closing



**Technical data**

Description of contact	
Press capacity / piston stroke	kN/mm
Tool data	
Length / Weight	mm/kg
Note	

HPG 55		
approx. 55		

**Ordering data**

Version	
Note	

Type	Qty.	Order No.
HPG 55	1	1501400000

**Accessories**

Note

Type	Qty.	Order No.

**Crimping inserts WM-shape**

- for crimping cable lugs and connectors of the euro-series

**Ordering data**

mm <sup>2</sup>	Crimp. width mm	Order No.
6	7	1501420000
10 / 70	7 / 5	1501430000
16 / 35	7 / 5	1501440000
25 / 50	12 / 5	1501450000
95	5	1501470000
120	5	1501480000
150	5	1501490000
185	5	1501500000
240	5	1501520000

**Crimping inserts hexagonal-shape**

- for crimping compression copper cable lugs DIN 46 235
- compression copper connectors DIN 46 267 part 1
- aluminium and aluminium/copper cable lugs and connectors

**Ordering data**

Code no.	Cu mm <sup>2</sup>	Al mm <sup>2</sup>	Crimp. width mm	Order No.
5	6	-	7	1501530000
6 / 16	10 / 70	- / 50	7 / 5	1501540000
8 / 12	16 / 35	- / 16+25	12 / 5	1501550000
10 / 14	25 / 50	10 / 35	12 / 5	1501570000
18	95	70	5	1501580000
20	120	-	5	1501590000
22	150	95+120	5	1501600000
25	185	150	5	1501620000

**Indent Crimping inserts**

- for compression terminals DIN 46234
- pin cable lugs DIN 46230
- connector DIN 46341 part 1

**Ordering data**

mm <sup>2</sup>	Crimp. width mm	Order No.
6	6	1501630000
10	8	1501640000
16	10	1501650000
25	12	1501670000
35	12	1501680000
50	12	1501690000
70	12	1501700000
95	12	1501720000
120	12	1501730000

**Crimping inserts**

- for insulated compression terminals

**Ordering data**

mm <sup>2</sup>	Crimp. width mm	Order No.
10	7	1501740000
16	7	1501750000
25	10	1501770000
35	10	1501780000
50	10	1501790000
70	7	1502250000

**Crimping inserts square-shape**

- for insulated and non insulated wire-end ferrules
- crimping width 19 mm

**Ordering data**

mm <sup>2</sup>	Crimp. width mm	Order No.
6	19	1502270000
10	19	1502280000
16	19	1502290000
25	19	1502300000
35	19	1502320000
50	19	1502330000
70	19	1502340000
95	19	1502370000
120	19	1502380000



## Crimping tools APG 80 and HPG 80

### Battery-powered compression tool APG 80

Battery-powered hydraulic compression tool for crimping cable lugs and connectors up to 300 mm<sup>2</sup>.

- extremely quick processing due to a two-stage hydraulic pump
- wide application range up to 300 mm<sup>2</sup>
- 360° revolving head with quick opening and closing
- Pressure-relief-button in one-hand operation is able to press from both sides. (for right-and left handed persons)
- suitable for cutting cables up to 28 mm outside diameter
- integrated overpressure valve, in case of wrong pressings, no damage of tools or inserts
- lithium-ionen-battery without memory effect, self-discharges very low
- high capacity due to 3.0 Ah-battery
- fastening eye for balance and carrying strap available
- ergonomic handle with a balanced weight distribution for sure work free of tiredness
- case, handle shell and pressure discharge key completely from isolated and push-firm plastic material
- universal usage: dies for all versions of cable lugs and connectors are available
- integrated electronic module for:
  - permanent accumulator-loading state control
  - supervision of the working process and state announcement
  - announcement of the next service intervall
  - mistake announcement at possible disturbances

### APG 80

6...300 mm<sup>2</sup>



Included in delivery

- Battery-powered compression tool with battery and battery charger
- supporting loop for transport and safety
- transport plastic case



### Technical data

Description of contact	
Press capacity	kN
Operating voltage	
Battery charger	
Time of loading	
Tool data	
Dimensions (w×l×h) / Weight	mm/kg
Note	

### Ordering data

Version
Note

### Accessories

Type	Qty.	Order No.
Ersatz Akku APG	1	1502140000
Ladegerät APG	1	1502170000
Ladegerät APG 120 V	1	1509390000
Note		

APG 80	
approx. 80	
14.4 Volt	
220-240 V, 50-60 Hz, 7.2-18 V	
approx. 50 minutes	
95 x 406 x 310 / 5.4 (incl. battery)	
Note	

Type	Qty.	Order No.
APG 80	1	1502390000
APG 80 120 V	1	1508820000
Note		

Type	Qty.	Order No.
Ersatz Akku APG	1	1502140000
Ladegerät APG	1	1502170000
Ladegerät APG 120 V	1	1509390000
Note		



**Crimping inserts WM-shape**

- for crimping cable lugs and connectors of the euro-series

**Ordering data**

mm <sup>2</sup>	Crimp. width mm	Order No.
6	7	1502430000
10	7	1502440000
16	7	1502470000
25	12	1502480000
35	12	1502490000
50	12	1502500000
70	12	1502520000
95	12	1502530000
120	12	1502540000
150	5	1502550000
185	5	1502570000
240	7	1502580000
300	7	1502590000



**Crimping inserts hexagonal-shape**

- for crimping compression copper cable lugs DIN 46 235
- compression copper connectors DIN 46 267 part 1
- aluminium and aluminium/copper cable lugs and connectors

**Ordering data**

Code no.	Cu mm <sup>2</sup>	Al mm <sup>2</sup>	Crimp. width mm	Order No.
5	6	-	7	1502600000
6	10	-	7	1502620000
8	16	-	12	1502630000
10	25	16	12	1502640000
12	35	25	12	1502650000
14	50	35	12	1502670000
16	70	50	12	1502680000
18	95	70	10	1502690000
20	120	-	10	1502700000
22	150	95 + 120	5	1502720000
25	185	150	5	1502730000
28	240	185	5	1502740000
32	300	240	7	1502750000
34	-	300	13	1502780000



**Indent Crimping inserts**

- for compression terminals DIN 46234
- pin cable lugs DIN 46230
- connector DIN 46341 part 1

**Ordering data**

mm <sup>2</sup>	Crimp. width mm	Order No.
6	6	1502820000
10	8	1502830000
16	10	1502840000
25	11	1502850000
35	11	1502870000
50	16	1502880000
70	16	1502890000
95	16	1502900000
120	16	1502790000
150	16	1502800000
185	8	1501800000
240	8	1501820000



**Crimping inserts**

- for insulated compression terminals

**Ordering data**

mm <sup>2</sup>	Crimp. width mm	Order No.
10	7	1501830000
16	7	1501840000



**Crimping inserts square-shape**

- for insulated and non insulated wire-end ferrules
- crimping width 24 mm (10...120 mm<sup>2</sup>)
- crimping width 38 mm (150...240 mm<sup>2</sup>)

**Ordering data**

mm <sup>2</sup>	Crimp. width mm	Order No.
10	24	1502000000
16	24	1502020000
25	24	1502030000
35	24	1502040000
50	24	1502050000
70	24	1502070000
95	24	1502080000
120	24	1502090000
150	38	1502100000
185	38	1502120000
240	38	1502130000

**Prerounding die sets**

- for rounding sector-shaped copper and aluminium conductors crimping width:

sm = stranded conductors

se = solid conductors

**Ordering data**

mm <sup>2</sup> sm	mm <sup>2</sup> se	Crimp. width mm	Order No.
10	-	16	1501850000
16	-	16	1501870000
25	35	16	1501880000
35	50	16	1501890000
50	70	16	1501900000
70	95	16	1501920000
95	120	16	1501930000
120	150	16	1501940000
150	185	16	1501970000
185	240	16	1501980000
240	300	16	1501990000



## Battery-powered hydraulic cable cutter AKT 50

### Battery-powered hydraulic cable cutter AKT 50

for cut of fine wiring aluminium and copper cables (without steel insertion) up to 50 mm outside diameter

- extremely quick processing due to a two-stage hydraulic pump
- 360° revolving head with quick opening and closing
- Pressure-relief-button in one-hand operation is able to press from both sides. (for right-and left handed persons)
- lithium-ionen-battery without memory effect, self-discharges very low
- high capacity due to 3.0 Ah-battery
- fastening eye for balance and carrying strap available
- ergonomic handle with a balanced weight distribution for sure work free of tiredness
- case, handle shell and pressure discharge key completely from isolated and push-firm plastic material
- integrated electronic module for:
  - permanent accumulator-loading state control
  - supervision of the working process and state announcement
  - announcement of the next service intervall
  - mistake announcement at possible disturbances

### AKT 50

Ø 6 ... 50 mm



Included in delivery

- cable cutter, Battery, battery charger
- supporting loop for transport and safety
- transport plastic case



### Technical data

Description of contact	
Cutting force	kN
Operating voltage	
Battery charger	
Time of loading	
Tool data	
Dimensions (w×l×h) / Weight	mm/kg
Note	

### Ordering data

Version
Note

### Accessories

Type	Qty.	Order No.
Note		

AKT 50		
approx. 60		
14,4 Volt		
220-240 V, 50-60 Hz, 7,2-18 V		
approx. 50 minutes		
95 x 465 x 310 / 4,9 (incl. battery)		

Type	Qty.	Order No.
AKT 50	1	1502190000
Note		

Type	Qty.	Order No.
Note		

**AKKU APG**



Technical data	
Replacement battery - Li-Ion	14.4 V, 3.0 Ah
Weight	0.56 kg

**Ordering data**

Type	Qty.	Order No.
Battery APG	1	1502140000

**BATTERY CHARGER APG**



Standard-battery charger	220-240 V	50-60 Hz
Voltage range	7.2-18 V	
Time of loading	approx. 50 minutes	
Weight	0.55 kg	

**Ordering data**

Type	Qty.	Order No.
Ladegerät APG	1	1502170000
Ladegerät APG 120 V	1	1509390000

**AKKU EPG 45**



Replacement battery - Li-Ion for EPG 45	18 V, 1,5 Ah
Weight	0,41 kg

**Ordering data**

Type	Qty.	Order No.
AKKU EPG 45	1	1500840000

**BATTERY CHARGER EPG**



Standard-Battery charger	220-240 V	50-60 Hz
Voltage range	7.2-18 V	
Time of loading	approx. 50 minutes	
Weight	0.55 kg	

**Ordering data**

Type	Qty.	Order No.
Ladegerät EPG	1	1509370000
Ladegerät EPG 120 V	1	1509380000





# Index

---

<b>Index</b>	Index Type	X.2
	Index Order No.	X.5
	Addresses worldwide	X.14

---

Type	Order No.	Page
<b>A</b>		
AKKU APG	1502140000	B.29
AKKU APG	1502140000	B.24
AKKU APG	1502140000	B.21
AKKU EPG 45	1500840000	B.29
AKKU EPG 45	1500840000	B.15
AKT 50	1502190000	B.28
APG 55	1501390000	B.21
APG 55 120V	1508790000	B.21
APG 80	1502390000	B.24
APG 90 120V	1508820000	B.2

Type	Order No.	Page
<b>C</b>		
CTI 6	9006120000	B.8
CTI 6 G	9202850000	B.8
CTI 6 G ZERT	1292880000	B.8
CTI 6 ZERT	9017290000	B.8
CTN 25 D5	9006230000	B.10
CTN 25 D5 ZERT	1292870000	B.10

Type	Order No.	Page
<b>E</b>		
EINSATZ MTR 160 10DIN	9021300000	B.20
EINSATZ MTR 160 10HEX	9020900000	B.20
EINSATZ MTR 160 120DIN	9021370000	B.20
EINSATZ MTR 160 120HEX	9020970000	B.20
EINSATZ MTR 160 120WM	9021800000	B.20
EINSATZ MTR 160 150DIN	9021380000	B.20
EINSATZ MTR 160 150HEX	9020980000	B.20
EINSATZ MTR 160 150WM	9021810000	B.20
EINSATZ MTR 160 16+35WM	9021760000	B.20
EINSATZ MTR 160 16DIN	9021310000	B.20
EINSATZ MTR 160 16HEX	9020910000	B.20
EINSATZ MTR 160 185HEX	9020990000	B.20
EINSATZ MTR 160 185WM	9021820000	B.20
EINSATZ MTR 160 240HEX	9021000000	B.20
EINSATZ MTR 160 240WM	9021830000	B.20
EINSATZ MTR 160 25DIN	9021320000	B.20
EINSATZ MTR 160 25HEX	9020920000	B.20
EINSATZ MTR 160 35DIN	9021330000	B.20
EINSATZ MTR 160 35HEX	9020930000	B.20
EINSATZ MTR 160 50DIN	9021340000	B.20
EINSATZ MTR 160 50HEX	9020940000	B.20
EINSATZ MTR 160 50WM	9021770000	B.20
EINSATZ MTR 160 70DIN	9021350000	B.20
EINSATZ MTR 160 70HEX	9020950000	B.20
EINSATZ MTR 160 70WM	9021780000	B.20
EINSATZ MTR 160 95DIN	9021360000	B.20
EINSATZ MTR 160 95HEX	9020960000	B.20
EINSATZ MTR 160 95WM	9021790000	B.20
EINSATZP.HEX100QMM	9021430000	B.20
EINSATZP.HEX120QMM	9022300000	B.20
EINSATZP.HEX150QMM	9022310000	B.20
EINSATZP.HEX160QMM	9021440000	B.20
EINSATZP.HEX185QMM	9022320000	B.20
EINSATZP.HEX240QMM	9022330000	B.20
EINSATZP.HEX250QMM	9021450000	B.20
EINSATZP.HEX300QMM	9022340000	B.20
EINSATZP.HEX350QMM	9021460000	B.20
EINSATZP.HEX50QMM	9021470000	B.20
EINSATZP.HEX70QMM	9021480000	B.20
EINSATZP.HEX95QMM	9022290000	B.20
EINSATZP.WM 10+25QMM	9024010000	B.20
EINSATZP.WM 120QMM	9025210000	B.20
EINSATZP.WM 150QMM	9025220000	B.20
EINSATZP.WM 16+35QMM	9024400000	B.20
EINSATZP.WM 185QMM	9025230000	B.20
EINSATZP.WM 240QMM	9028020000	B.20
EINSATZP.WM 50QMM	9024410000	B.20
EINSATZP.WM 70QMM	9024420000	B.20
EINSATZP.WM 95QMM	9024430000	B.20
EINSATZPAAR ISO 10QMM	9016180000	B.20
EINSATZPAAR ISO 16QMM	9016190000	B.20
EINSATZPAAR ISO 25QMM	9016200000	B.20
EINSATZPAAR ISO 35QMM	9016210000	B.20
EINSATZPAAR ISO 50QMM	9016220000	B.20
EINSATZPAAR ISO 70QMM	9016230000	B.20
EINSATZPAAR ISO 95QMM	9016240000	B.20
EINSATZPAAR ISO120QMM	9016250000	B.20
EPG 45	1500830000	B.15
EPG 45 120V	1508780000	B.15
ES APG/HPG65 AEH 10	1502280000	B.23
ES APG/HPG65 AEH 120	1502380000	B.23
ES APG/HPG65 AEH 16	1502290000	B.23
ES APG/HPG65 AEH 25	1502300000	B.23
ES APG/HPG65 AEH 50	1502330000	B.23
ES APG/HPG65 AEH 6	1502270000	B.23
ES APG/HPG65 AEH 70	1502340000	B.23
ES APG/HPG65 AEH 95	1502370000	B.23
ES APG/HPG65 AEH35	1502320000	B.23
ES APG/HPG65 DIN 10	1501640000	B.23
ES APG/HPG65 DIN 120	1501730000	B.23
ES APG/HPG65 DIN 16	1501650000	B.23
ES APG/HPG65 DIN 25	1501660000	B.23
ES APG/HPG65 DIN 35	1501670000	B.23
ES APG/HPG65 DIN 50	1501680000	B.23
ES APG/HPG65 DIN 6	1501630000	B.23
ES APG/HPG65 DIN 70	1501690000	B.23
ES APG/HPG65 DIN 95	1501700000	B.23
ES APG/HPG65 DIN 95	1501710000	B.23
ES APG/HPG65 DIN 95	1501720000	B.23
ES APG/HPG65 DIN 95	1501730000	B.23
ES APG/HPG65 DIN 95	1501740000	B.23
ES APG/HPG65 DIN 95	1501750000	B.23
ES APG/HPG65 DIN 95	1501760000	B.23
ES APG/HPG65 DIN 95	1501770000	B.23
ES APG/HPG65 DIN 95	1501780000	B.23
ES APG/HPG65 DIN 95	1501790000	B.23
ES APG/HPG65 ISO 70	1502250000	B.23
ES APG/HPG65 WM 120	1501480000	B.23
ES APG/HPG65 WM 150	1501490000	B.23
ES APG/HPG65 WM 16/35	1501440000	B.23
ES APG/HPG65 WM 185	1501500000	B.23
ES APG/HPG65 WM 240	1501520000	B.23
ES APG/HPG65 WM 25/50	1501450000	B.23
ES APG/HPG65 WM 6	1501420000	B.23
ES APG/HPG65 WM 95	1501470000	B.23
ES APG/HPG65 WM10/70	1501430000	B.23
ES APG/HPG80 AEH 10	1502000000	B.27
ES APG/HPG80 AEH 120	1502090000	B.27
ES APG/HPG80 AEH 150	1502100000	B.27
ES APG/HPG80 AEH 16	1502020000	B.27
ES APG/HPG80 AEH 185	1502120000	B.27
ES APG/HPG80 AEH 240	1502130000	B.27
ES APG/HPG80 AEH 25	1502030000	B.27
ES APG/HPG80 AEH 50	1502050000	B.27
ES APG/HPG80 AEH 70	1502070000	B.27
ES APG/HPG80 AEH 95	1502080000	B.27
ES APG/HPG80 AEH35	1502040000	B.27
ES APG/HPG80 DIN 10	1502830000	B.26
ES APG/HPG80 DIN 120	1502790000	B.26
ES APG/HPG80 DIN 150	1502800000	B.26
ES APG/HPG80 DIN 16	1502840000	B.26
ES APG/HPG80 DIN 185	1501800000	B.26
ES APG/HPG80 DIN 240	1501820000	B.26
ES APG/HPG80 DIN 25	1502850000	B.26
ES APG/HPG80 DIN 35	1502870000	B.26
ES APG/HPG80 DIN 50	1502880000	B.26
ES APG/HPG80 DIN 6	1502820000	B.26
ES APG/HPG80 DIN 70	1502890000	B.26
ES APG/HPG80 DIN 95	1502900000	B.26
ES APG/HPG80 HEX 10	1502620000	B.26
ES APG/HPG80 HEX 120	1502700000	B.26
ES APG/HPG80 HEX 160	1502720000	B.26
ES APG/HPG80 HEX 16	1502630000	B.26
ES APG/HPG80 HEX 185	1502730000	B.26
ES APG/HPG80 HEX 240	1502740000	B.26
ES APG/HPG80 HEX 25	1502840000	B.26
ES APG/HPG80 HEX 300AL	1502780000	B.26
ES APG/HPG80 HEX 35	1502650000	B.26
ES APG/HPG80 HEX 50	1502670000	B.26
ES APG/HPG80 HEX 6	1502600000	B.26
ES APG/HPG80 HEX 70	1502680000	B.26
ES APG/HPG80 HEX 95	1502690000	B.26
ES APG/HPG80 ISO 10	1501830000	B.26
ES APG/HPG80 ISO 16	1501840000	B.26
ES APG/HPG80 RD 10	1501850000	B.27
ES APG/HPG80 RD 120/150	1501940000	B.27
ES APG/HPG80 RD 150/185	1501970000	B.27
ES APG/HPG80 RD 16	1501870000	B.27
ES APG/HPG80 RD 185/240	1501980000	B.27
ES APG/HPG80 RD 240/300	1501990000	B.27
ES APG/HPG80 RD 25/35	1501880000	B.27
ES APG/HPG80 RD 35/50	1501890000	B.27
ES APG/HPG80 RD 50/70	1501900000	B.27
ES APG/HPG80 RD 70/95	1501920000	B.27
ES APG/HPG80 RD 95/120	1501930000	B.27
ES APG/HPG80 WM 120	1502540000	B.26
ES APG/HPG80 WM 150	1502550000	B.26
ES APG/HPG80 WM 16	1502470000	B.26
ES APG/HPG80 WM 185	1502570000	B.26
ES APG/HPG80 WM 240	1502580000	B.26
ES APG/HPG80 WM 25	1502480000	B.26
ES APG/HPG80 WM 300	1502590000	B.26
ES APG/HPG80 WM 35	1502490000	B.26
ES APG/HPG80 WM 50	1502500000	B.26
ES APG/HPG80 WM 6	1502430000	B.26
ES APG/HPG80 WM 70	1502520000	B.26
ES APG/HPG80 WM 95	1502530000	B.26
ES APG/HPG80 WM10	1502440000	B.26
ES MTR110 AEH 10	1501040000	B.17
ES MTR110 AEH 16	1501050000	B.17
ES MTR110 AEH 25	1501070000	B.17
ES MTR110 AEH 35	1501170000	B.17
ES MTR110 AEH 50	1501180000	B.17
ES MTR110 AEH 6	1501030000	B.17
ES MTR110 DIN 10	1501320000	B.17
ES MTR110 DIN 16	1501330000	B.17
ES MTR110 DIN 25	1501340000	B.17
ES MTR110 DIN 35	1501350000	B.17
ES MTR110 DIN 50	1501370000	B.17

Type	Order No.	Page
<b>F</b>		
ES MTR110 DIN 6	1501290000	B.17
ES MTR110 DIN 70	1501380000	B.17
ES MTR110 HEX 10/70	1500940000	B.17
ES MTR110 HEX 120	1500990000	B.17
ES MTR110 HEX 16/35	1500950000	B.17
ES MTR110 HEX 25/50	1500970000	B.17
ES MTR110 HEX 6	1500930000	B.17
ES MTR110 HEX 95	1500980000	B.17
ES MTR110 ISO 10	1501000000	B.17
ES MTR110 ISO 16	1501020000	B.17
ES MTR110 RUND 10	1501190000	B.18
ES MTR110 RUND 120/150	1501280000	B.18
ES MTR110 RUND 16	1501200000	B.18
ES MTR110 RUND 25/35	1501220000	B.18
ES MTR110 RUND 35/50	1501230000	B.18
ES MTR110 RUND 50/70	1501240000	B.18
ES MTR110 RUND 70/95	1501250000	B.18
ES MTR110 RUND 95/120	1501270000	B.18
ES MTR110 WM 10/70	1500870000	B.17
ES MTR110 WM 120	1500920000	B.17
ES MTR110 WM 16/35	1500880000	B.17
ES MTR110 WM 25/50	1500890000	B.17
ES MTR110 WM 6	1500850000	B.17
ES MTR110 WM 95	1500900000	B.17
ES MTR35 AEH 10	1500770000	B.14
ES MTR35 AEH 16	1500780000	B.14
ES MTR35 AEH 25	1500790000	B.14
ES MTR35 AEH 35	1500800000	B.14
ES MTR35 AEH 50	1500820000	B.14
ES MTR35 AEH 6	1500750000	B.14
ES MTR35 DIN 10	1500670000	B.14
ES MTR35 DIN 16	1500680000	B.14
ES MTR35 DIN 25	1500690000	B.14
ES MTR35 DIN 35	1500700000	B.14
ES MTR35 DIN 6	1500650000	B.14
ES MTR35 HEX 10	1500590000	B.14
ES MTR35 HEX 16	1500600000	B.14
ES MTR35 HEX 25	1500620000	B.14
ES MTR35 HEX 35	1500630000	B.14
ES MTR35 HEX 50	1500640000	B.14
ES MTR35 HEX 6	1500580000	B.14
ES MTR35 ISO 10	1500720000	B.14
ES MTR35 ISO 16	1500730000	B.14
ES MTR35 ISO 25	1500740000	B.14
ES MTR35 WM 10	1500500000	B.14
ES MTR35 WM 16	1500520000	B.14
ES MTR35 WM 25	1500530000	B.14
ES MTR35 WM 35	1500540000	B.14
ES MTR35 WM 50	1500550000	B.14
ES MTR35 WM 6	1500490000	B.14

Type	Order No.	Page
<b>F</b>		
FSKI/0,5-1,0/288	1491790000	A.28
FSKI/0,5-1,0/488	1491810000	A.28
FSKI/0,5-1,0/638	1491820000	A.2

Type	Order No.	Page	Type	Order no.	Page	Type	Order No.	Page	Type	Order No.	Page
KQJ-M4/S/2,5	1492280000	A.23	KQN-M5/-10	1494020000	A.18	KRN-M4/-1,5	1495050000	A.5	KWN-M12-/240 90	1494610000	A.9
KQJ-M5/-0,5	1492120000	A.23	KQN-M5/-16	1494070000	A.18	KRN-M4/-10	1496900000	A.5	KWN-M12-/25 45	1496210000	A.10
KQJ-M5/-1	1492220000	A.23	KQN-M5/-2,5	1493890000	A.17	KRN-M4/-2,5	1495090000	A.5	KWN-M12-/25 90	1495890000	A.8
KQJ-M5/-10	1492430000	A.23	KQN-M5/-25	1494120000	A.18	KRN-M4/-4	1495130000	A.5	KWN-M12-/300 90	1497300000	A.9
KQJ-M5/-16	1492480000	A.23	KQN-M5/-6	1493960000	A.17	KRN-M4/-6	1497150000	A.5	KWN-M12-/35 45	1496250000	A.10
KQJ-M5/2,5	1492310000	A.23	KQN-M5/S/-1	1493780000	A.17	KRN-M5/-0,75	1495030000	A.5	KWN-M12-/35 90	1495940000	A.8
KQJ-M5/6	1492380000	A.23	KQN-M5/S/-2,5	1493870000	A.17	KRN-M5/-1,5	1495070000	A.5	KWN-M12-/50 45	1496300000	A.10
KQJ-M5/S/-1	1492210000	A.23	KQN-M6/-10	1493800000	A.17	KRN-M5/-10	1496910000	A.5	KWN-M12-/50 90	1495990000	A.9
KQJ-M5/S/2,5	1492300000	A.23	KQN-M6/-16	1494030000	A.18	KRN-M5/-16	1496970000	A.5	KWN-M12-/6 90	1496170000	A.8
KQJ-M6/-10	1492230000	A.23	KQN-M6/-16	1494080000	A.18	KRN-M5/-2,5	1495100000	A.5	KWN-M12-/70 45	1496330000	A.10
KQJ-M6/-10	1492440000	A.23	KQN-M6/-2,5	1493900000	A.17	KRN-M5/25	1495830000	A.5	KWN-M12-/70 90	1496040000	A.9
KQJ-M6/-16	1492490000	A.23	KQN-M6/-25	1494130000	A.18	KRN-M5/4	1495140000	A.5	KWN-M12-/95 45	1496370000	A.10
KQJ-M6/2,5	1492320000	A.23	KQN-M6/35	1494170000	A.18	KRN-M5/6	1497170000	A.5	KWN-M12-/95 90	1496100000	A.9
KQJ-M6/6	1492390000	A.23	KQN-M6/50	1493510000	A.18	KRN-M6/-1,5	1495080000	A.5	KWN-M14-/25 90	1495900000	A.8
KQJ-M8/-1	1492440000	A.23	KQN-M6/6	1493970000	A.17	KRN-M6/-10	1496920000	A.5	KWN-M14-/35 90	1494640000	A.8
KQJ-M8/-10	1492450000	A.23	KQN-M6/70	1493190000	A.18	KRN-M6/-120 S	1494410000	A.7	KWN-M14-/50 90	1494650000	A.9
KQJ-M8/-16	1492500000	A.23	KQN-M8/-1	1493810000	A.17	KRN-M6/-150 S	1494440000	A.7	KWN-M14-/70 90	1494660000	A.9
KQJ-M8/2,5	1492330000	A.23	KQN-M8/-10	1494040000	A.18	KRN-M6/-16	1496980000	A.5	KWN-M14-/95 90	1494670000	A.9
KQJ-M8/6	1492400000	A.23	KQN-M8/120	1493320000	A.18	KRN-M6/2,5	1495110000	A.5	KWN-M16-/120 45	1496420000	A.10
KQNG-M3,5/-1	1493550000	A.19	KQN-M8/-16	1494090000	A.18	KRN-M6/25	1496490000	A.5	KWN-M16-/120 90	1494480000	A.9
KQNG-M3,5/2,5	1493610000	A.19	KQN-M8/-2,5	1493910000	A.17	KRN-M6/35	1496540000	A.6	KWN-M16-/150 90	1496470000	A.10
KQNG-M3/-1	1493540000	A.19	KQN-M8/25	1494140000	A.18	KRN-M6/35 S	1494790000	A.7	KWN-M16-/150 45	1496450000	A.10
KQNG-M3/2,5	1493600000	A.19	KQN-M8/35	1494180000	A.18	KRN-M6/4	1495150000	A.5	KWN-M16-/150 90	1494520000	A.9
KQNG-M4/-1	1493570000	A.19	KQN-M8/50	1493150000	A.18	KRN-M6/50	1496590000	A.6	KWN-M16-/185 45	1495370000	A.10
KQNG-M4/2,5	1493630000	A.19	KQN-M8/6	1493980000	A.17	KRN-M6/50 S	1494820000	A.7	KWN-M16-/185 90	1494570000	A.9
KQNG-M4/6	1493660000	A.19	KQN-M8/70	1493210000	A.18	KRN-M6/6	1497180000	A.5	KWN-M16-/240 45	1495410000	A.10
KQNG-M4/S/-1	1493660000	A.19	KQN-M8/95	1493260000	A.18	KRN-M6/70	1496640000	A.6	KWN-M16-/240 90	1494620000	A.9
KQNG-M4/S/2,5	1493620000	A.19	KRN-M10/-10	1496940000	A.5	KRN-M6/120 S	1494850000	A.7	KWN-M16-/300 90	1497310000	A.9
KQNG-M5/-1	1493580000	A.19	KRN-M10/-120	1496560000	A.6	KRN-M6/95	1495820000	A.6	KWN-M16-/35 90	1494690000	A.8
KQNG-M5/10	1492680000	A.19	KRN-M10/120 S	1494920000	A.7	KRN-M6/95 S	1494430000	A.7	KWN-M16-/50 90	1496000000	A.9
KQNG-M5/2,5	1493640000	A.19	KRN-M10/150	1495710000	A.6	KRN-M8/10	1496930000	A.5	KWN-M16-/70 90	1496050000	A.9
KQNG-M5/6	1492650000	A.19	KRN-M10/150 S	1494950000	A.7	KRN-M8/120	1495790000	A.6	KWN-M16-/95 45	1496380000	A.10
KQNG-M6/-1	1493590000	A.19	KRN-M10/16	1497000000	A.5	KRN-M8/120 S	1494420000	A.7	KWN-M16-/95 90	1496110000	A.9
KQNG-M6/10	1492690000	A.19	KRN-M10/185	1495430000	A.6	KRN-M8/150	1495700000	A.6	KWN-M20-/150 45	1496480000	A.10
KQNG-M6/16	1492700000	A.19	KRN-M10/185 S	1494980000	A.7	KRN-M8/150 S	1494940000	A.7	KWN-M20-/150 90	1494530000	A.9
KQNG-M6/2,5	1493650000	A.19	KRN-M10/240	1495490000	A.6	KRN-M8/16	1496990000	A.5	KWN-M20-/185 45	1495380000	A.10
KQNG-M6/6	1492660000	A.19	KRN-M10/240 S	1494340000	A.7	KRN-M8/185	1497290000	A.6	KWN-M20-/185 90	1494580000	A.9
KQNG-M8/16	1492710000	A.19	KRN-M10/25	1496510000	A.5	KRN-M8/2,5	1495120000	A.5	KWN-M20-/240 45	1495420000	A.10
KQNG-M8/6	1492670000	A.19	KRN-M10/300	1495300000	A.6	KRN-M8/240	1495480000	A.6	KWN-M20-/240 90	1494630000	A.9
KQN-M10/-1	1493710000	A.17	KRN-M10/300 S	1494380000	A.7	KRN-M8/25	1496500000	A.5	KWN-M20-/300 90	1497320000	A.9
KQN-M10/10	1494050000	A.18	KRN-M10/35	1496570000	A.6	KRN-M8/35	1496550000	A.6	KWN-M20-/50 90	1494710000	A.9
KQN-M10/120	1493330000	A.18	KRN-M10/50	1496610000	A.6	KRN-M8/35 S	1494810000	A.7	KWN-M20-/70 90	1496070000	A.9
KQN-M10/150	1493370000	A.18	KRN-M10/50 S	1494840000	A.7	KRN-M8/4	1495170000	A.5	KWN-M3-/0,75 90	1495180000	A.8
KQN-M10/16	1494100000	A.18	KRN-M10/6	1497200000	A.5	KRN-M8/50	1496600000	A.6	KWN-M3/-1,5 90	1495210000	A.8
KQN-M10/185	1493420000	A.18	KRN-M10/70	1496760000	A.6	KRN-M8/50 S	1494830000	A.7	KWN-M4/0,75 90	1495190000	A.8
KQN-M10/2,5	1493930000	A.17	KRN-M10/70 S	1494870000	A.7	KRN-M8/6	1497190000	A.5	KWN-M4/-1,5 90	1495220000	A.8
KQN-M10/240	1493460000	A.18	KRN-M10/95	1495610000	A.6	KRN-M8/70	1496650000	A.6	KWN-M4/2,5 90	1495250000	A.8
KQN-M10/25	1494150000	A.18	KRN-M10/95 S	1494900000	A.7	KRN-M8/70 S	1494860000	A.7	KWN-M4/4 90	1495300000	A.8
KQN-M10/35	1494190000	A.18	KRN-M12/-10	1496950000	A.5	KRN-M8/95	1495600000	A.6	KWN-M5/0,75 90	1495200000	A.8
KQN-M10/50	1493160000	A.18	KRN-M12/120	1496570000	A.6	KRN-M8/95 S	1494890000	A.7	KWN-M5/-1,5 90	1495230000	A.8
KQN-M10/6	1493990000	A.17	KRN-M12/120 S	1494930000	A.7	KSI/0,1-0,5	1491370000	A.25	KWN-M5/10 45	1496810000	A.10
KQN-M10/70	1493220000	A.18	KRN-M12/150	1495720000	A.6	KSI/0,5-1,0	1491380000	A.25	KWN-M5/10 90	1497020000	A.8
KQN-M10/95	1493270000	A.18	KRN-M12/150 S	1494970000	A.7	KSI/1,5-2,5	1491410000	A.25	KWN-M5/16 45	1496850000	A.10
KQN-M12/10	1494060000	A.18	KRN-M12/16	1497010000	A.5	KSI/1,5-2,5	1491390000	A.25	KWN-M5/16 90	1497080000	A.8
KQN-M12/120	1493340000	A.18	KRN-M12/185	1495440000	A.6	KSI/10	1491430000	A.25	KWN-M5/2,5 90	1495270000	A.8
KQN-M12/150	1493380000	A.18	KRN-M12/185 S	1494990000	A.7	KSI/16	1491440000	A.25	KWN-M5/4 90	1495310000	A.8
KQN-M12/16	1494110000	A.18	KRN-M12/240	1495500000	A.6	KSI/4,0-6,0	1491420000	A.25	KWN-M5/6	1496120000	A.8
KQN-M12/185	1493430000	A.18	KRN-M12/240 S	1494350000	A.7	KSN/0,1-0,5	1492720000	A.20	KWN-M5/6 90	1497220000	A.8
KQN-M12/2,5	1493940000	A.17	KRN-M12/25	1496520000	A.5	KSN/0,5-1,0	1492730000	A.20	KWN-M6/-1,5 90	1495240000	A.8
KQN-M12/240	1493470000	A.18	KRN-M12/300	1495540000	A.6	KSN/1,5-2,5	1492740000	A.20	KWN-M6/10 45	1496820000	A.10
KQN-M12/25	1494160000	A.18	KRN-M12/300 S	1494390000	A.7	KSN/10	1492780000	A.20	KWN-M6/10 90	1497030000	A.8
KQN-M12/35	1493130000	A.18	KRN-M12/35	1496580000	A.6	KSN/16	1492790000	A.20	KWN-M6/16 45	1496870000	A.10
KQN-M12/50	1493170000	A.18	KRN-M12/50	1496620000	A.6	KSN/2,5	1492750000	A.20	KWN-M6/16 90	1497090000	A.8
KQN-M12/6	1494000000	A.17	KRN-M12/6	1497210000	A.5	KSN/25	1492800000	A.20	KWN-M6/2,5 90	1495280000	A.8
KQN-M12/70	1493230000	A.18	KRN-M12/70	1495700000	A.6	KSN/35	1492810000	A.20	KWN-M6/25 45	1496180000	A.10
KQN-M12/95	1493280000	A.18	KRN-M12/70 S	1494880000	A.7	KSN/50	1492820000	A.20	KWN-M6/25 90	1495850000	A.8
KQN-M16/120	1493350000	A.18	KRN-M12/95	1495620000	A.6	KSN/6,0	1492770000	A.20	KWN-M6/35 45	1496220000	A.10
KQN-M16/150	1493390000	A.18	KRN-M12/95 S	1494910000	A.7	KSN/70	1492830000	A.20	KWN-M6/35 90	1495910000	A.8
KQN-M16/185	1493440000	A.18	KRN-M14/120	1495800000	A.6	KSN/95	1492840000	A.20	KWN-M6/4 90	1495320000	A.8
KQN-M16/240	1493480000	A.18	KRN-M14/150	1495810000	A.6	KWN-M10/-10 45	1496840000	A.10	KWN-M6/50 45	1496270000	A.10
KQN-M16/25	1493490000	A.18	KRN-M14/185	1497250000	A.6	KWN-M10/-10 90	1497050000	A.8	KWN-M6/50 90	1495950000	A.9
KQN-M16/35	1493140000	A.18	KRN-M14/240	1497270000	A.6	KWN-M10/-120 45	1496400000	A.10	KWN-M6/6 90	1496130000	A.8
KQN-M16/50	1493180000	A.18	KRN-M14/25	1496530000	A.5	KWN-M10/-120 90	1494450000	A.9	KWN-M6/70 90	1496010000	A.9
KQN-M16/70	1493240000	A.18	KRN-M14/300	1497280000	A.6	KWN-M10/-150 45	1496440000	A.10	KWN-M8/-10 45	1496830000	A.10
KQN-M16/95	1493290000	A.18	KRN-M14/50	1495750000	A.6	KWN-M10/-150 90	1494500000	A.9	KWN-M8/-10 90	1497040000	A.8
KQN-M2,5/-1	1493730000	A.17	KRN-M14/70	1495770000	A.6	KWN-M10/-16 45	1496890000	A.10	KWN-M8/120 45	1496390000	A.10
KQN-M2/0,5	1493670000	A.17	KRN-M14/95	1495780000	A.6	KWN-M10/-16 90	1497110000	A.8	KWN-M8/120 90	1494680000	A.9
KQN-M2/-1	1493720000	A.17	KRN-M16/120	1495680000	A.6	KWN-M10/-185 45	1495340000	A.10	KWN-M8/150 45	1496430000	A.10
KQN-M20/120	1493360000	A.18	KRN-M16/150	1495730000	A.6	KWN-M10/-185 90	1494540000	A.9	KWN-M8/150 90	1494490000	A.9
KQN-M20/150	1493410000	A.18	KRN-M16/185	1495450000	A.6	KWN-M10/240 90	1494590000	A.9	KWN-M8/16 45	1496880000	A.10
KQN-M20/185	1493450000	A.18	KRN-M16/185 S	1495000000	A.7	KWN-M10/25 45	1496200000	A.10	KWN-M8/16 90	1497100000	A.8
KQN-M20/35	1493520000	A.18	KRN-M16/240	1495510000	A.6	KWN-M10/25 90	1495880000	A.8	KWN-M8/2,5 90	1495290000	A.8
KQN-M20/50	1493530000	A.18	KRN-M16/240 S	1494370000	A.7	KWN-M10/35 45	1496240000	A.10	KWN-M8/25 45	1496190000	A.10
KQN-M20/70	1493250000	A.18	KRN-M16/300	1495550000	A.6	KWN-M10/35					

Type	Order No.	Page
LADEGERAET APG	1502170000	B.21
LADEGERAET APG 120V	1509390000	B.29
LADEGERAET APG 120V	1509390000	B.24
LADEGERAET APG 120V	1509390000	B.21
LADEGERAET EPG 45	1509370000	B.29
LADEGERAET EPG 45	1509370000	B.15
LADEGERAET EPG 45 120V	1509380000	B.29
LADEGERAET EPG 45 120V	1509380000	B.15

## M

Type	Order No.	Page
MAKTX	MATNR	IDX
MTR 110	9018020000	B.16
MTR 110	9018020000	B.5
MTR 110	9018020000	B.4
MTR 160	9017250000	B.19
MTR 300	9021390000	B.19
MTR 35	9017500000	B.13
MTR 35	9017500000	B.5
MTR 35	9017500000	B.4

## P

Type	Order No.	Page
PZ PK 10/120	1500480000	B.12
PZ PK 6/70	1500470000	B.11
PZ RK 10/120	1500450000	B.12
PZ RK 6/70	1500440000	B.11

## R

Type	Order No.	Page
RUNDPRESSEINS 120SM150SE	9016380000	B.20
RUNDPRESSEINS 150SM185SE	9016390000	B.20
RUNDPRESSEINS 185SM240SE	9016440000	B.20
RUNDPRESSEINS 25SM35SE	9016260000	B.20
RUNDPRESSEINS 35SM50SE	9016270000	B.20
RUNDPRESSEINS 50SM70SE	9016280000	B.20
RUNDPRESSEINS 70SM95SE	9016290000	B.20
RUNDPRESSEINS 95SM120SE	9016370000	B.20

## S

Type	Order No.	Page
STEMPEL 10-70QMM	9022990000	B.20
STEMPEL 95-150QMM	9023110000	B.20

## T

Type	Order No.	Page
TRAGEKASTEN MTR 110	9018040000	B.16
TRAGEKASTEN MTR 300	9021420000	B.19
TRAGEKASTEN MTR 35	9017840000	B.13
TRAGETASCHE MTR 160	9017270000	B.19

## V

VEI/1,5-2,5	1491580000	A.26
VEI/10	1491610000	A.26
VEI/46	1491590000	A.26
VFSKHI/0,5-1,0/288	1491650000	A.27
VFSKHI/0,5-1,0/485	1491660000	A.27
VFSKHI/0,5-1,0/488	1491670000	A.27
VFSKHI/0,5-1,0/638	1491680000	A.27
VFSKHI/0,5-1,0/285	1491640000	A.27
VFSKHI/1,5-2,5/285	1491730000	A.27
VFSKHI/1,5-2,5/288	1491740000	A.27
VFSKHI/1,5-2,5/485	1491690000	A.27
VFSKHI/1,5-2,5/488	1491710000	A.27
VFSKHI/1,5-2,5/638	1491720000	A.27
VFSKHI/4,0-6,0/638	1491750000	A.27
VFSKHI/4,0-6,0/9512	1491760000	A.27
VFSKHV/0,5-1,0/285	1491860000	A.27
VFSKHV/0,5-1,0/288	1491870000	A.27
VFSKHV/0,5-1,0/485	1491880000	A.27
VFSKHV/0,5-1,0/488	1491890000	A.27
VFSKHV/0,5-1,0/638	1491910000	A.27
VFSKHV/1,5-2,5/485	1491920000	A.27
VFSKHV/1,5-2,5/488	1491930000	A.27
VFSKHV/1,5-2,5/638	1491940000	A.27
VFSKHV/4,0-6,0/638	1491950000	A.27
VPLI/0,1-0,5	1491450000	A.26
VPLI/0,5-1,0	1491460000	A.26
VPLI/1,5-2,5	1491470000	A.26
VPLI/4,0-6,0	1491480000	A.26
VPLN/0,1-0,5	1492850000	A.21
VPLN/0,5-1,0	1492860000	A.21
VPLN/1,5-2,5	1492870000	A.21
VPLN/-10	1492890000	A.21
VPLN/-120	1492960000	A.21
VPLN/-150	1492970000	A.21
VPLN/-16	1492900000	A.21
VPLN/-25	1492910000	A.21
VPLN/-35	1492920000	A.21
VPLN/4-6,0	1492880000	A.21
VPLN/50	1492930000	A.21
VPLN/70	1492940000	A.21
VPLN/95	1492950000	A.21
VPN/-10	1498620000	A.15
VPN/-120	1498690000	A.15
VPN/-150	1498710000	A.15
VPN/-16	1498630000	A.15
VPN/-185	1498720000	A.15

Type	Order No.	Page
VPN/-240	1498730000	A.15
VPN/-25	1498640000	A.15
VPN/-300	1498740000	A.15
VPN/-35	1498650000	A.15
VPN/-50	1498660000	A.15
VPN/6	1498610000	A.15
VPN/-70	1498670000	A.15
VPN/95	1498680000	A.15
VRSHV/0,5-1,0	1491980000	A.30
VRSHVI/0,5-1,0	1492020000	A.30
VRSHVI/1,5-2,5	1491990000	A.30
VRSHVI/1,5-2,5	1492030000	A.30
VRSHVI/4,0-6,0	1492010000	A.30
VRSTI/0,5-1,0	1492040000	A.29
VRSTI/0,5-1,0	1492070000	A.30
VRSTI/1,5-2,5	1492080000	A.30
VRSTI/1,5-2,5	1492050000	A.29
VRSTI/4,0-6,0	1492060000	A.29
VSRI/0,1-0,5	1491490000	A.25
VSRI/0,5-1,0	1491510000	A.25
VSRI/1,5-2,5	1491520000	A.25
VSRI/4,0-6,0	1491530000	A.25
VSTI/0,1-0,5	1491540000	A.25
VSTI/0,5-1,0	1491550000	A.25
VSTI/1,5-2,5	1491560000	A.25
VSTI/4,0-2,5	1491570000	A.25
VSTN/0,1-0,5	1492980000	A.21
VSTN/0,5-10	1492990000	A.21
VSTN/1,5-2,5	1493010000	A.21
VSTN/10	1493030000	A.21
VSTN/-10	1497130000	A.11
VSTN/120	1493110000	A.21
VSTN/-120	1494780000	A.11
VSTN/150	1493120000	A.21
VSTN/-150	1497380000	A.11
VSTN/16	1493040000	A.21
VSTN/-16	1497140000	A.11
VSTN/-185	1497390000	A.11
VSTN/-2,5	1497350000	A.11
VSTN/240	1497400000	A.11
VSTN/25	1493050000	A.21
VSTN/25	1494730000	A.11
VSTN/35	1493060000	A.21
VSTN/35	1494740000	A.11
VSTN/4	1497370000	A.11
VSTN/4-6	1493020000	A.21
VSTN/50	1493070000	A.21
VSTN/50	1494750000	A.11
VSTN/6	1494720000	A.11
VSTN/70	1493080000	A.21
VSTN/70	1494760000	A.11
VSTN/95	1493090000	A.21
VSTN/95	1494770000	A.11
VSTN-M0,5/-0,75	1497330000	A.11
VSTN-M1/-1,5	1497340000	A.11
VSTVI/0,5-1,0	1491770000	A.28
VSTVI/1,5-2,5	1491780000	A.28

## W

WFSKHV/0,5-1,05	1491960000	A.29
WFSKHV/1,5-2,5	1491970000	A.29

Order No.	Type	Page
-----------	------	------

## 1210000000

1216230000	HBT 6,0 - 4,6 GE	A.31
------------	------------------	------

## 1230000000

1233330000	HBT 2,5 - 4,6 BL	A.31
1233340000	HBT 1,5 - 4,6 RT	A.31

## 1290000000

1292870000	CTN 25 D5 ZERT	B.10
1292880000	CTI 6 G ZERT	B.8

## 1310000000

1312440000	HBT 1,5 - 3,0 RT	A.31
1312450000	HBT 2,5 - 3,0 BL	A.31
1312470000	HBT 6,0 - 3,0 GE	A.31

## 1490000000

1491260000	KQIG-M6/-2,5	A.24
1491270000	KQIG-M4/-6	A.24
1491280000	KQIG-M5/-6	A.24
1491290000	KQIG-M6/-6	A.24
1491310000	KQIG-M8/-6	A.24
1491320000	KQIG-M10/-6	A.24
1491330000	KQIG-M5/-10	A.24
1491340000	KQIG-M6/-10	A.24
1491350000	KQIG-M6/-16	A.24
1491360000	KQIG-M8/-16	A.24
1491370000	KSI/0,1-0,5	A.25
1491380000	KSI/0,5-1,0	A.25
1491390000	KSI/1,5-2,5	A.25
1491410000	KSI/1,5-2,5	A.25
1491420000	KSI/4,0-6,0	A.25
1491430000	KSI/-10	A.25
1491440000	KSI/-16	A.25
1491450000	VPLI/0,1-0,5	A.26
1491460000	VPLI/0,5-1,0	A.26
1491470000	VPLI/1,5-2,5	A.26
1491480000	VPLI/4,0-6,0	A.26
1491490000	VSRI/0,1-0,5	A.25
1491510000	VSRI/0,5-1,0	A.25
1491520000	VSRI/1,5-2,5	A.25
1491530000	VSRI/4,0-6,0	A.25
1491540000	VSTI/0,1-0,5	A.25
1491550000	VSTI/0,5-1,0	A.25
1491560000	VSTI/1,5-2,5	A.25
1491570000	VSTI/4,0-2,5	A.25
1491580000	VEI/1,5-2,5	A.26
1491590000	VEI/4,6	A.26
1491610000	VEI/-10	A.26
1491640000	VFSKHI/0,5-1,0/285	A.27
1491650000	VFSKHI/0,5-1,0/288	A.27
1491660000	VFSKHI/0,5-1,0/485	A.27
1491670000	VFSKHI/0,5-1,0/488	A.27
1491680000	VFSKHI/0,5-1,0/638	A.27
1491690000	VFSKHI/1,5-2,5/485	A.27
1491710000	VFSKHI/1,5-2,5/488	A.27
1491720000	VFSKHI/1,5-2,5/638	A.27
1491730000	VFSKHI/1,5-2,5/285	A.27
1491740000	VFSKHI/1,5-2,5/288	A.27
1491750000	VFSKHI/4,0-6,0/638	A.27
1491760000	VFSKHI/4,0-6,0/9512	A.27
1491770000	VSTVI/0,5-1,0	A.28
1491780000	VSTVI/1,5-2,5	A.28
1491790000	FSKI/0,5-1,0/288	A.28
1491810000	FSKI/0,5-1,0/488	A.28
1491820000	FSKI/0,5-1,0/638	A.28
1491830000	FSKI/1,5-2,5/638	A.28
1491840000	FSKI/4,0-6,0/638	A.28
1491850000	FSKI/1,5-2,5/488	A.28
1491860000	VFSKHV/0,5-1,0/285	A.27
1491870000	VFSKHV/0,5-1,0/288	A.27
1491880000	VFSKHV/0,5-1,0/485	A.27
1491890000	VFSKHV/0,5-1,0/488	A.27
1491910000	VFSKHV/0,5-1,0/638	A.27
1491920000	VFSKHV/1,5-2,5/485	A.27
1491930000	VFSKHV/1,5-2,5/488	A.27
1491940000	VFSKHV/1,5-2,5/638	A.27
1491950000	VFSKHV/4,0-6,0/638	A.27
1491960000	VFSKHV/0,5-1,0,5	A.29
1491970000	VFSKHV/1,5-2,5	A.29
1491980000	VRSHV/0,5-1,0	A.30
1491990000	VRSHV/1,5-2,5	A.30
1492010000	VRSHV/4,0-6,0	A.30
1492020000	VRSHV/0,5-1,0	A.30
1492030000	VRSHV/1,5-2,5	A.30
1492040000	VRSTI/0,5-1,0	A.29
1492050000	VRSTI/1,5-2,5	A.29
1492060000	VRSTI/4,0-6,0	A.29
1492070000	VRSTI/0,5-1,0	A.30
1492080000	VRSTI/1,5-2,5	A.30
1492090000	KQI-M2/-0,5	A.23
1492100000	KQI-M3/-0,5	A.23
1492110000	KQI-M4/-0,5	A.23
1492120000	KQI-M5/-0,5	A.23

Order No.	Type	Page
-----------	------	------

1492130000	KQI-M10/-1	A.23
1492140000	KQI-M2/-1	A.23
1492150000	KQI-M2,5/-1	A.23
1492170000	KQI-M3/-1	A.23
1492180000	KQI-M3,5/-1	A.23
1492190000	KQI-M4/S/-1	A.23
1492200000	KQI-M4/-1	A.23
1492210000	KQI-M5/S/-1	A.23
1492220000	KQI-M5/-1	A.23
1492230000	KQI-M6/-1	A.23
1492240000	KQI-M8/-1	A.23
1492250000	KQI-M3/2,5	A.23
1492270000	KQI-M3,5/2,5	A.23
1492280000	KQI-M4/S/2,5	A.23
1492290000	KQI-M4/2,5	A.23
1492300000	KQI-M5/S/2,5	A.23
1492310000	KQI-M5/2,5	A.23
1492320000	KQI-M6/2,5	A.23
1492330000	KQI-M8/2,5	A.23
1492340000	KQI-M10/2,5	A.23
1492350000	KQI-M12/2,5	A.23
1492370000	KQI-M4/-6	A.23
1492380000	KQI-M5/-6	A.23
1492390000	KQI-M6/-6	A.23
1492400000	KQI-M8/-6	A.23
1492410000	KQI-M10/-6	A.23
1492420000	KQI-M12/-6	A.23
1492430000	KQI-M5/-10	A.23
1492440000	KQI-M6/-10	A.23
1492450000	KQI-M8/-10	A.23
1492470000	KQI-M10/-10	A.23
1492480000	KQI-M5/-16	A.23
1492490000	KQI-M6/-16	A.23
1492500000	KQI-M8/-16	A.23
1492510000	KQI-M10/-16	A.23
1492520000	KQIG-M3/-1	A.24
1492530000	KQIG-M3,5/-1	A.24
1492540000	KQIG-M4/S/-1	A.24
1492550000	KQIG-M4/-1	A.24
1492580000	KQIG-M5/-1	A.24
1492590000	KQIG-M6/-1	A.24
1492600000	KQIG-M3/2,5	A.24
1492610000	KQIG-M3,5/2,5	A.24
1492620000	KQIG-M4/S/2,5	A.24
1492630000	KQIG-M4/2,5	A.24
1492640000	KQIG-M5/2,5	A.24
1492650000	KQIG-M6/2,5	A.19
1492660000	KQIG-M8/2,5	A.19
1492670000	KQIG-M10/2,5	A.19
1492680000	KQIG-M5/-10	A.19
1492690000	KQIG-M6/-10	A.19
1492700000	KQIG-M8/-10	A.19
1492710000	KQIG-M10/-10	A.19
1492720000	KSN/0,1-0,5	A.20
1492730000	KSN/0,5-1,0	A.20
1492740000	KSN/1,5-2,5	A.20
1492750000	KSN/2,5	A.20
1492770000	KSN/-6,0	A.20
1492780000	KSN/-10	A.20
1492790000	KSN/-16	A.20
1492800000	KSN/25	A.20
1492810000	KSN/35	A.20
1492820000	KSN/50	A.20
1492830000	KSN/70	A.20
1492840000	KSN/95	A.20
1492850000	VPLN/0,1-0,5	A.21
1492860000	VPLN/0,5-1,0	A.21
1492870000	VPLN/1,5-2,5	A.21
1492880000	VPLN/4,6-0	A.21
1492890000	VPLN/-10	A.21
1492900000	VPLN/-16	A.21
1492910000	VPLN/25	A.21
1492920000	VPLN/35	A.21
1492930000	VPLN/50	A.21
1492940000	VPLN/70	A.21
1492950000	VPLN/95	A.21
1492960000	VPLN/120	A.21
1492970000	VPLN/150	A.21
1492980000	VSTN/0,1-0,5	A.21
1492990000	VSTN/0,5-1,0	A.21
1493010000	VSTN/1,5-2,5	A.21
1493020000	VSTN/4,6	A.21
1493030000	VSTN/10	A.21
1493040000	VSTN/16	A.21
1493050000	VSTN/25	A.21
1493060000	VSTN/35	A.21
1493070000	VSTN/50	A.21
1493080000	VSTN/70	A.21
1493090000	VSTN/95	A.21
1493110000	VSTN/120	A.21
1493120000	VSTN/150	A.21
1493130000	KQN-M12/35	A.18
1493140000	KQN-M16/35	A.18
1493150000	KQN-M8/50	A.18
1493160000	KQN-M10/50	A.18
1493170000	KQN-M12/50	A.18
1493180000	KQN-M16/50	A.18
1493190000	KQN-M6/70	A.18
1493200000	KQN-M8/70	A.18

Order No.	Type	Page
-----------	------	------

1493220000	KQN-M10/70	A.18
1493230000	KQN-M12/70	A.18
1493240000	KQN-M16/70	A.18
1493250000	KQN-M20/70	A.18
1493260000	KQN-M8/95	A.18
1493270000	KQN-M10/95	A.18
1493280000	KQN-M12/95	A.18
1493290000	KQN-M16/95	A.18
1493310000	KQN-M20/95	A.18
1493320000	KQN-M8/120	A.18
1493330000	KQN-M10/120	A.18
1493340000	KQN-M12/120	A.18
1493350000	KQN-M16/120	A.18
1493360000	KQN-M20/120	A.18
1493370000	KQN-M10/150	A.18
1493380000	KQN-M12/150	A.18
1493390000	KQN-M16/150	A.18
1493410000	KQN-M20/150	A.18
1493420000	KQN-M10/185	A.18
1493430000	KQN-M12/185	A.18
1493440000	KQN-M16/185	A.18
1493450000	KQN-M20/185	A.18
1493460000	KQN-M10/240	A.18
1493470000	KQN-M12/240	A.18
1493480000	KQN-M16/240	A.18
1493490000	KQN-M18/25	A.18
1493510000	KQN-M6/50	A.18
1493520000	KQN-M20/35	A.18
1493530000	KQN-M20/50	A.18
1493540000	KQN-M3/-1	A.19
1493550000	KQN-M3,5/-1	A.19
1493560000	KQN-M4/S/-1	A.19
1493570000	KQN-M4/-1	A.19
1493580000	KQN-M5/-1	A.19
1493590000	KQN-M6/-1	A.19
1493600000	KQN-M3/2,5	A.19
1493610000	KQN-M3,5/2,5	A.19
1493620000	KQN-M4/S/2,5	A.19
1493630000	KQN-M4/2,5	A.19
1493640000	KQN-M5/2,5	A.19
1493650000	KQN-M6/2,5	A.19
1493660000	KQN-M8/2,5	A.19
1493670000	KQN-M2/0,5	A.17
1493680000	KQN-M3/0,5	A.17
1493690000	KQN-M4/0,5	A.17
1493700000	KQN-M5/0,5	A.17
1493710000	KQN-M10/-1	A.17
1493720000	KQN-M2/-1	A.17
1493730000	KQN-M2,5/1	A.17
1493740000	KQN-M3/-1	A.17
1493750000	KQN-M3,5/-1	A.17
1493760000	KQN-M4/S/-1	A.17
1493770000	KQN-M4/-1	A.17
1493780000	KQN-M5/S/-1	A.17
1493790000	KQN-M5/-1	A.17
1493800000	KQN-M6/-1	A.17
1493810000	KQN-M8/-1	A.17
1493820000	KQN-M3/2,5	A.17
1493830000	KQN-M3,5/2,5	A.17
1493840000	KQN-M4/S/2,5	A.17
1493850000	KQN-M4/2,5	A.17
1493870000	KQN-M5/S/2,5	A.17
1493880000	KQN-M5/2,5	A.17
1493890000	KQN-M6/2,5	A.17
1493900000	KQN-M8/2,5	A.17
1493910000	KQN-M10/2,5	A.17
1493920000	KQN-M12/2,5	A.17
1493930000	KQN-M4/-6	A.17
1493940000	KQN-M4/6	A.17
1493950000	KQN-M5/6	A.17
1493960000	KQN-M6/6	A.17
1493970000	KQN-M8/6	A.17
1493980000	KQN-M10/6	A.17
1493990000	KQN-M12/6	A.17
1494000000	KQN-M4/-10	A.18
1494010000	KQN-M4/10	A.18
1494020000	KQN-M5/-10	A.18
1494030000	KQN-M6/-10	A.18
1494040000	KQN-M8/-10	A.18
1494050000	KQN-M10/-10	A.18
1494060000	KQN-M12/-10	A.18
1494070000	KQN-M5/-16	A.18
1494080000	KQN-M6/-16	A.18
1494090000	KQN-M8/-16	A.18
1494100000	KQN-M10/-16	A.18
1494110000	KQN-M12/-16	A.18
1494120000	KQN-M5/25	A.18
1494130000	KQN-M6/25	A.18
1494140000	KQN-M8/25	A.18
1494150000	KQN-M10/25	A.18
1494160000	KQN-M12/25	A.18
1494170000	KQN-M6/35	A.18
1494180000	KQN-M8/35	A.18
1494190000	KQN-M10/35	A.18
1494200000	KQN-M12/35	A.18
1494210000	KQN-M10/240 S	A.7
1494220000	KQN-M12/240 S	A.7
149		

Order No.	Type	Page	Order No.	Type	Page	Order No.	Type	Page	Order No.	Type	Page
1495530000	KRN-M10/-300	A.6	1496630000	KRN-M16/-50	A.6	1498310000	KP-M10/-150	A.14	1501230000	ES MTR110 RUND 35/50	B.18
1495540000	KRN-M12/-300	A.6	1496640000	KRN-M6/-70	A.6	1498320000	KP-M12/-150	A.14	1501240000	ES MTR110 RUND 50/70	B.18
1495550000	KRN-M16/-300	A.6	1496650000	KRN-M8/-70	A.6	1498330000	KP-M16/-150	A.14	1501250000	ES MTR110 RUND 70/95	B.18
1495570000	KRN-M12/-70	A.6	1496670000	KRN-M10/-70	A.6	1498340000	KP-M20/-150	A.14	1501270000	ES MTR110 RUND 95/120	B.18
1495580000	KRN-M16/-70	A.6	1496680000	KWN-M5/-10 45	A.10	1498350000	KP-M10/-185	A.14	1501280000	ES MTR110 RUND 120/150	B.18
1495590000	KRN-M20/-70	A.6	1496690000	KWN-M6/-10 45	A.10	1498360000	KP-M12/-185	A.14	1501290000	ES MTR110 DIN 6	B.17
1495600000	KRN-M8/-95	A.6	1496700000	KWN-M8/-10 45	A.10	1498370000	KP-M16/-185	A.14	1501320000	ES MTR110 DIN 10	B.17
1495610000	KRN-M10/-95	A.6	1496710000	KWN-M10/-10 45	A.10	1498380000	KP-M20/-185	A.14	1501330000	ES MTR110 DIN 16	B.17
1495620000	KRN-M12/-95	A.6	1496720000	KWN-M5/-16 45	A.10	1498390000	KP-M10/-240	A.14	1501340000	ES MTR110 DIN 25	B.17
1495630000	KRN-M16/-95	A.6	1496730000	KWN-M6/-16 45	A.10	1498400000	KP-M12/-240	A.14	1501350000	ES MTR110 DIN 35	B.17
1495640000	KRN-M20/-95	A.6	1496740000	KWN-M8/-16 45	A.10	1498410000	KP-M16/-240	A.14	1501370000	ES MTR110 DIN 50	B.17
1495650000	KRN-M10/-120	A.6	1496750000	KWN-M10/-16 45	A.10	1498420000	KP-M12/240	A.14	1501380000	ES MTR110 DIN 70	B.17
1495670000	KRN-M12/-120	A.6	1496760000	KRN-M4/-10	A.5	1498430000	KP-M20/240	A.14	1501390000	APG 55	B.21
1495680000	KRN-M16/-120	A.6	1496770000	KRN-M5/-10	A.5	1498440000	KP-M10/-300	A.14	1501400000	HPG 55	B.22
1495690000	KRN-M20/-120	A.6	1496780000	KRN-M6/-10	A.5	1498450000	KP-M12/-300	A.14	1501420000	ES APG/HPG55 WM 6	B.23
1495700000	KRN-M8/-150	A.6	1496790000	KRN-M8/-10	A.5	1498460000	KP-M16/-300	A.14	1501430000	ES APG/HPG55 WM 10/70	B.23
1495710000	KRN-M10/-150	A.6	1496800000	KRN-M10/-10	A.5	1498470000	KP-M20/300	A.14	1501430000	ES APG/HPG55 WM 10/70	B.23
1495720000	KRN-M12/-150	A.6	1496810000	KRN-M10/-10	A.5	1498480000	KP-M8/-120	A.14	1501440000	ES APG/HPG55 WM 16/35	B.23
1495730000	KRN-M16/-150	A.6	1496820000	KRN-M12/-10	A.5	1498490000	KP-M14/-120	A.14	1501450000	ES APG/HPG55 WM 25/50	B.23
1495740000	KRN-M20/-150	A.6	1496830000	KRN-M5/-16	A.5	1498500000	KP-M6/50	A.13	1501470000	ES APG/HPG55 WM 95	B.23
1495750000	KRN-M14/-50	A.6	1496840000	KRN-M6/-16	A.5	1498510000	KP-M14/95	A.13	1501480000	ES APG/HPG55 WM 120	B.23
1495770000	KRN-M14/-70	A.6	1496850000	KRN-M8/-16	A.5	1498520000	KP-M14/240	A.14	1501490000	ES APG/HPG55 WM 150	B.23
1495780000	KRN-M14/95	A.6	1496860000	KRN-M10/-16	A.5	1498530000	KP-M8/-185	A.14	1501500000	ES APG/HPG55 WM 185	B.23
1495790000	KRN-M8/-120	A.6	1496870000	KRN-M12/-16	A.5	1498540000	KP-M14/300	A.14	1501520000	ES APG/HPG55 WM 240	B.23
1495800000	KRN-M14/-120	A.6	1496880000	KWN-M5/-10 90	A.8	1498550000	KP-M14/300	A.14	1501530000	ES APG/HPG55 HEX 6	B.23
1495810000	KRN-M14/-150	A.6	1496890000	KWN-M6/-10 90	A.8	1498560000	KP-M14/70	A.13	1501530000	ES APG/HPG55 HEX 6	B.23
1495820000	KRN-M6/-95	A.6	1496900000	KWN-M6/-10 90	A.8	1498570000	KP-M14/50	A.13	1501540000	ES APG/HPG55 HEX 10/70	B.23
1495830000	KRN-M5/-25	A.5	1496910000	KWN-M8/-10 90	A.8	1498580000	KP-M14/150	A.14	1501550000	ES APG/HPG55 HEX 16/35	B.23
1495840000	KRN-M20/-50	A.6	1496920000	KWN-M10/-10 90	A.8	1498590000	KP-M14/185	A.14	1501570000	ES APG/HPG55 HEX 25/50	B.23
1495850000	KWN-M6/25 90	A.8	1496930000	KWN-M12/-10 90	A.8	1498600000	VPN/6	A.15	1501580000	ES APG/HPG55 HEX 95	B.23
1495870000	KWN-M8/25 90	A.8	1496940000	KWN-M5/-16 90	A.8	1498610000	VPN/16	A.15	1501590000	ES APG/HPG55 HEX 120	B.23
1495880000	KWN-M10/25 90	A.8	1496950000	KWN-M6/16 90	A.8	1498620000	VPN/16	A.15	1501600000	ES APG/HPG55 HEX 150	B.23
1495890000	KWN-M12/25 90	A.8	1496960000	KWN-M8/16 90	A.8	1498630000	VPN/25	A.15	1501620000	ES APG/HPG55 HEX 185	B.23
1495900000	KWN-M14/25 90	A.8	1496970000	KWN-M10/16 90	A.8	1498640000	VPN/35	A.15	1501630000	ES APG/HPG55 DIN 6	B.23
1495910000	KWN-M6/35 90	A.8	1496980000	KWN-M12/16 90	A.8	1498650000	VPN/50	A.15	1501640000	ES APG/HPG55 DIN 10	B.23
1495920000	KWN-M8/35 90	A.8	1496990000	VSTN/-10	A.11	1498660000	VPN/70	A.15	1501650000	ES APG/HPG55 DIN 16	B.23
1495930000	KWN-M10/35 90	A.8	1497000000	VSTN/-16	A.11	1498670000	VPN/95	A.15	1501670000	ES APG/HPG55 DIN 25	B.23
1495940000	KWN-M12/35 90	A.8	1497010000	KRN-M4/6	A.5	1498680000	VPN/120	A.15	1501680000	ES APG/HPG55 DIN 35	B.23
1495950000	KWN-M6/50 90	A.9	1497020000	KRN-M5/6	A.5	1498690000	VPN/150	A.15	1501690000	ES APG/HPG55 DIN 50	B.23
1495970000	KWN-M8/50 90	A.9	1497030000	KRN-M6/6	A.5	1498700000	VPN/185	A.15	1501700000	ES APG/HPG55 DIN 70	B.23
1495980000	KWN-M10/50 90	A.9	1497040000	KRN-M8/6	A.5	1498710000	VPN/240	A.15	1501720000	ES APG/HPG55 DIN 95	B.23
1495990000	KWN-M12/50 90	A.9	1497050000	KRN-M10/6	A.5	1498720000	VPN/300	A.15	1501730000	ES APG/HPG55 DIN 120	B.23
1496000000	KWN-M16/50 90	A.9	1497060000	KRN-M12/6	A.5	1498730000	VPN/400	A.15	1501740000	ES APG/HPG55 ISO 10	B.23
1496010000	KWN-M6/70 90	A.9	1497070000	KWN-M5/6 90	A.8	1498740000	VPN/600	A.15	1501750000	ES APG/HPG55 ISO 16	B.23
1496020000	KWN-M8/70 90	A.9	1497080000	KRN-M20/300	A.6	1500440000	PZ RK 6/70	B.11	1501770000	ES APG/HPG55 ISO 25	B.23
1496030000	KWN-M10/70 90	A.9	1497090000	KRN-M14/185	A.6	1500450000	PZ RK 10/120	B.12	1501780000	ES APG/HPG55 ISO 35	B.23
1496040000	KWN-M12/70 90	A.9	1497100000	KRN-M14/240	A.6	1500460000	PZ PK 6/70	B.11	1501790000	ES APG/HPG55 ISO 50	B.23
1496050000	KWN-M16/70 90	A.9	1497110000	KRN-M8/185	A.6	1500470000	PZ PK 10/120	B.12	1501800000	ES APG/HPG55 DIN 185	B.26
1496070000	KWN-M20/70 90	A.9	1497120000	KRN-M11/185	A.6	1500480000	PZ PK 10/120	B.12	1501820000	ES APG/HPG55 DIN 240	B.26
1496080000	KWN-M8/95 90	A.9	1497130000	KWN-M12/300 90	A.9	1500490000	ES MTR35 WM 6	B.14	1501830000	ES APG/HPG55 DIN 240	B.26
1496090000	KWN-M10/95 90	A.9	1497140000	KWN-M16/300 90	A.9	1500500000	ES MTR35 WM 10	B.14	1501840000	ES APG/HPG55 ISO 16	B.26
1496100000	KWN-M12/95 90	A.9	1497150000	KWN-M20/300 90	A.9	1500510000	ES MTR35 WM 16	B.14	1501850000	ES APG/HPG55 ISO 16	B.26
1496110000	KWN-M16/95 90	A.9	1497160000	VSTN-M0,5/0,75	A.11	1500520000	ES MTR35 WM 25	B.14	1501860000	ES APG/HPG55 ISO 16	B.26
1496120000	KWN-M12/95 90	A.9	1497170000	VSTN-M1/-1,5	A.11	1500530000	ES MTR35 WM 35	B.14	1501870000	ES APG/HPG55 ISO 16	B.26
1496130000	KWN-M16/95 90	A.9	1497180000	VSTN/-2,5	A.11	1500540000	ES MTR35 WM 50	B.14	1501880000	ES APG/HPG55 ISO 16	B.26
1496140000	KWN-M5/6	A.8	1497190000	VSTN/4	A.11	1500550000	ES MTR35 WM 50	B.14	1501890000	ES APG/HPG55 ISO 16	B.26
1496150000	KWN-M6/6 90	A.8	1497200000	VSTN/150	A.11	1500560000	ES MTR35 HEX 6	B.14	1501900000	ES APG/HPG55 ISO 16	B.26
1496160000	KWN-M8/6 90	A.8	1497210000	VSTN/185	A.11	1500570000	ES MTR35 HEX 10	B.14	1501910000	ES APG/HPG55 ISO 16	B.26
1496170000	KWN-M10/6 90	A.8	1497220000	VSTN/240	A.11	1500580000	ES MTR35 HEX 16	B.14	1501920000	ES APG/HPG55 ISO 16	B.26
1496180000	KWN-M12/6 90	A.8	1497230000	VSTN/240	A.11	1500590000	ES MTR35 HEX 25	B.14	1501930000	ES APG/HPG55 ISO 16	B.26
1496190000	KWN-M6/25 45	A.10	1497240000	KP-M5/6	A.13	1500600000	ES MTR35 HEX 35	B.14	1501940000	ES APG/HPG55 ISO 16	B.26
1496200000	KWN-M8/25 45	A.10	1497250000	KP-M6/6	A.13	1500610000	ES MTR35 HEX 50	B.14	1501950000	ES APG/HPG55 ISO 16	B.26
1496210000	KWN-M10/25 45	A.10	1497260000	KP-M8/6	A.13	1500620000	ES MTR35 HEX 50	B.14	1501960000	ES APG/HPG55 ISO 16	B.26
1496220000	KWN-M12/25 45	A.10	1497270000	KP-M5/10	A.13	1500630000	ES MTR35 DIN 6	B.14	1501970000	ES APG/HPG55 ISO 16	B.26
1496230000	KWN-M8/35 45	A.10	1497280000	KP-M6/10	A.13	1500640000	ES MTR35 DIN 10	B.14	1501980000	ES APG/HPG55 ISO 16	B.26
1496240000	KWN-M10/35 45	A.10	1497290000	KP-M8/10	A.13	1500650000	ES MTR35 DIN 16	B.14	1501990000	ES APG/HPG55 ISO 16	B.26
1496250000	KWN-M12/35 45	A.10	1497300000	KP-M10/10	A.13	1500660000	ES MTR35 DIN 25	B.14	1502000000	ES APG/HPG55 ISO 16	B.26
1496270000	KWN-M6/50 45	A.10	1497310000	KP-M12/10	A.13	1500670000	ES MTR35 DIN 35	B.14	1502010000	ES APG/HPG55 ISO 16	B.26
1496280000	KWN-M8/50 45	A.10	1497320000	KP-M5/16	A.13	1500680000	ES MTR35 ISO 10	B.14	1502020000	ES APG/HPG55 ISO 16	B.26
1496290000	KWN-M10/50 45	A.10	1497330000	KP-M6/16	A.13	1500690000	ES MTR35 ISO 16	B.14	1502030000	ES APG/HPG55 ISO 16	B.26
1496300000	KWN-M12/50 45	A.10	1497340000	KP-M8/16	A.13	1500700000	ES MTR35 ISO 25	B.14	1502040000	ES APG/HPG55 ISO 16	B.26
1496310000	KWN-M8/70 45	A.10	1497350000	KP-M10/16	A.13	1500710000	ES MTR35 AEH 6	B.14	1502050000	ES APG/HPG55 ISO 16	B.26
1496320000	KWN-M10/70 45	A.10	1497360000	KP-M12/16	A.13	1500720000	ES MTR35 AEH 10	B.14	1502060000	ES APG/HPG55 ISO 16	B.26
1496330000	KWN-M12/70 45	A.10	1497370000	KP-M8/25	A.13	1500730000	ES MTR35 AEH 16	B.14	1502070000	ES APG/HPG55 ISO 16	B.26
1496340000	KWN-M8/95 45	A.10	1497380000	KP-M8/25	A.13	1500740000	ES MTR35 AEH 25	B.14	1502080000	ES APG/HPG55 ISO 16	B.26
1496350000	KWN-M10/95 45	A.10	1497390000	KP-M10/25	A.13	1500750000	ES MTR35 AEH 35	B.14	1502090000	ES APG/HPG55 ISO 16	B.26
1496370000	KWN-M12/95 45	A.10	1497400000	KP-M12/25	A.13	1500760000	ES MTR35 AEH 50	B.14	1502100000	ES APG/HPG55 ISO 16	B.26
1496380000	KWN-M16/95 45	A.10	1497410000	KP-M16/25	A.13	1500770000	ES MTR35 AEH 70	B.14	1502110000	ES APG/HPG55 ISO 16	B.26
1496390000	KWN-M8/-120 45	A.10	1497420000	KP-M16/25	A.13	1500780000	ES MTR35 AEH 95	B.14	1502120000	ES APG/HPG55 ISO 16	B.26
1496400000	KWN-M10/120 45	A.10	1497430000	KP-M12/35	A.13	1500790000	ES MTR35 AEH 120	B.14	1502130000	ES APG/HPG55 ISO 16	B.26
1496410000	KWN-M12/120 45	A.10	1497440000	KP-M10/35	A.13</						

Order No.	Type	Page
1502550000	ES APG/HPG80 WM 150	B.26
1502570000	ES APG/HPG80 WM 185	B.26
1502580000	ES APG/HPG80 WM 240	B.26
1502590000	ES APG/HPG80 WM 300	B.26
1502600000	ES APG/HPG80 HEX 6	B.26
1502620000	ES APG/HPG80 HEX 10	B.26
1502630000	ES APG/HPG80 HEX 16	B.26
1502640000	ES APG/HPG80 HEX 25	B.26
1502650000	ES APG/HPG80 HEX 35	B.26
1502670000	ES APG/HPG80 HEX 50	B.26
1502680000	ES APG/HPG80 HEX 70	B.26
1502690000	ES APG/HPG80 HEX 95	B.26
1502700000	ES APG/HPG80 HEX 120	B.26
1502720000	ES APG/HPG80 HEX 150	B.26
1502730000	ES APG/HPG80 HEX 185	B.26
1502740000	ES APG/HPG80 HEX 240	B.26
1502750000	ES APG/HPG80 HEX 300	B.26
1502780000	ES APG/HPG80 HEX 300AL	B.26
1502790000	ES APG/HPG80 DIN 120	B.26
1502800000	ES APG/HPG80 DIN 150	B.26
1502820000	ES APG/HPG80 DIN 6	B.26
1502830000	ES APG/HPG80 DIN 10	B.26
1502840000	ES APG/HPG80 DIN 16	B.26
1502850000	ES APG/HPG80 DIN 25	B.26
1502870000	ES APG/HPG80 DIN 35	B.26
1502880000	ES APG/HPG80 DIN 50	B.26
1502890000	ES APG/HPG80 DIN 70	B.26
1502900000	ES APG/HPG80 DIN 95	B.26
1508780000	EPG 45 120V	B.15
1508790000	APG 55 120V	B.21
1508820000	APG 80 120V	B.24
1509370000	LADEGERAET EPG 45	B.29
1509370000	LADEGERAET EPG 45	B.15
1509380000	LADEGERAET EPG 45 120V	B.29
1509380000	LADEGERAET EPG 45 120V	B.15
1509390000	LADEGERAET APG 120V	B.29
1509390000	LADEGERAET APG 120V	B.24
1509390000	LADEGERAET APG 120V	B.21

## 9000000000

9006120000	CTI 6	B.8
9006230000	CTN 25 D5	B.10

## 9010000000

9014100000	HTN 21 M. AN	B.9
9014400000	HTI 15	B.9
9014610000	HTN 21	B.9
9016180000	EINSATZPAAR ISO 100MM	B.20
9016190000	EINSATZPAAR ISO 160MM	B.20
9016200000	EINSATZPAAR ISO 250MM	B.20
9016210000	EINSATZPAAR ISO 350MM	B.20
9016220000	EINSATZPAAR ISO 500MM	B.20
9016230000	EINSATZPAAR ISO 700MM	B.20
9016240000	EINSATZPAAR ISO 950MM	B.20
9016250000	EINSATZPAAR ISO1200MM	B.20
9016260000	RUNDPRESSEINS 25SM35SE	B.20
9016270000	RUNDPRESSEINS 35SM50SE	B.20
9016280000	RUNDPRESSEINS 50SM70SE	B.20
9016290000	RUNDPRESSEINS 70SM95SE	B.20
9016370000	RUNDPRESSEINS 95SM120SE	B.20
9016380000	RUNDPRESSEINS 120SM150SE	B.20
9016390000	RUNDPRESSEINS 150SM185SE	B.20
9016440000	RUNDPRESSEINS 185SM240SE	B.20
9017170000	HTN 21 M. AN ZERT	B.9
9017250000	MTR 160	B.19
9017270000	TRAGETASCHE MTR 160	B.19
9017290000	CTI 6 ZERT	B.8
9017380000	HTN 21 ZERT	B.9
9017430000	HTI 15 ZERT	B.9
9017500000	MTR 35	B.13
9017500000	MTR 35	B.5
9017500000	MTR 35	B.4
9017840000	TRAGEKASTEN MTR 35	B.13
9018020000	MTR 110	B.16
9018020000	MTR 110	B.5
9018020000	MTR 110	B.4
9018040000	TRAGEKASTEN MTR 110	B.16

## 9020000000

9020900000	EINSATZ MTR 160 10HEX	B.20
9020910000	EINSATZ MTR 160 16HEX	B.20
9020920000	EINSATZ MTR 160 25HEX	B.20
9020930000	EINSATZ MTR 160 35HEX	B.20
9020940000	EINSATZ MTR 160 50HEX	B.20
9020950000	EINSATZ MTR 160 70HEX	B.20
9020960000	EINSATZ MTR 160 95HEX	B.20
9020970000	EINSATZ MTR 160 120HEX	B.20
9020980000	EINSATZ MTR 160 150HEX	B.20
9020990000	EINSATZ MTR 160 185HEX	B.20
9021000000	EINSATZ MTR 160 240HEX	B.20
9021300000	EINSATZ MTR 160 10DIN	B.20
9021310000	EINSATZ MTR 160 16DIN	B.20
9021320000	EINSATZ MTR 160 25DIN	B.20
9021330000	EINSATZ MTR 160 35DIN	B.20
9021340000	EINSATZ MTR 160 50DIN	B.20
9021350000	EINSATZ MTR 160 70DIN	B.20

Order No.	Type	Page
9021360000	EINSATZ MTR 160 95DIN	B.20
9021370000	EINSATZ MTR 160 120DIN	B.20
9021380000	EINSATZ MTR 160 150DIN	B.20
9021390000	MTR 300	B.19
9021420000	TRAGEKASTEN MTR 300	B.19
9021430000	EINSATZP.HEX100MM	B.20
9021440000	EINSATZP.HEX160MM	B.20
9021450000	EINSATZP.HEX250MM	B.20
9021460000	EINSATZP.HEX350MM	B.20
9021470000	EINSATZP.HEX500MM	B.20
9021480000	EINSATZP.HEX700MM	B.20
9021750000	EINSATZ MTR 160 10+25WM	B.20
9021760000	EINSATZ MTR 160 16+35WM	B.20
9021770000	EINSATZ MTR 160 50WM	B.20
9021780000	EINSATZ MTR 160 70WM	B.20
9021790000	EINSATZ MTR 160 95WM	B.20
9021800000	EINSATZ MTR 160 120WM	B.20
9021810000	EINSATZ MTR 160 150WM	B.20
9021820000	EINSATZ MTR 160 185WM	B.20
9021830000	EINSATZ MTR 160 240WM	B.20
9022290000	EINSATZP.HEX950MM	B.20
9022300000	EINSATZP.HEX1200MM	B.20
9022310000	EINSATZP.HEX1500MM	B.20
9022320000	EINSATZP.HEX1850MM	B.20
9022330000	EINSATZP.HEX2400MM	B.20
9022340000	EINSATZP.HEX3000MM	B.20
9022350000	GESENK 10+700MM	B.20
9022360000	GESENK 16+350MM	B.20
9022370000	GESENK 25+500MM	B.20
9022380000	GESENK 950MM	B.20
9022390000	GESENK 1200MM	B.20
9022400000	GESENK 1500MM	B.20
9022990000	STEMPEL 10-700MM	B.20
9023110000	STEMPEL 95-1500MM	B.20
9024010000	EINSATZP.WM 10+25QMM	B.20
9024400000	EINSATZP.WM 16+35QMM	B.20
9024410000	EINSATZP.WM 50QMM	B.20
9024420000	EINSATZP.WM 70QMM	B.20
9024430000	EINSATZP.WM 95QMM	B.20
9025210000	EINSATZP.WM 120QMM	B.20
9025220000	EINSATZP.WM 150QMM	B.20
9025230000	EINSATZP.WM 185QMM	B.20
9028020000	EINSATZP.WM 240QMM	B.20

## 9200000000

9202850000	CTI 6 G	B.8
------------	---------	-----















# Addresses worldwide

## Let's connect.

### AE United Arab Emirates

Weidmüller Middle East FZE  
Warehouse Q3-79  
SAIF-Zone  
P.O. BOX 8591  
Sharjah  
Tel. +971 65572723  
Fax +971 65572724  
wme.info@weidmuller.com

### AO Angola

Please contact  
Phambili Interface  
South Africa

### AR Argentina

CPI SA  
Bauness 2660  
C1431DOF Buenos Aires  
Tel. +54 11 4523 8008  
Fax +54 11 4522 0546  
info@cpi.com.ar  
www.cpi.com.ar

### AT Austria

Weidmüller GmbH  
IZ NOE Süd Straße 2b, Obj  
M 59  
2355 Wiener Neudorf  
Tel. +43 2236 67080  
Fax +43 2236 6708-899  
office.at@weidmuller.com  
www.weidmuller.com

### AU Australia

Weidmüller Pty. Ltd.  
PO BOX 6944  
Huntingwood 2148  
Huntingwood Drive 43  
Huntingwood NSW 2148  
Tel. +61 2 9671 9999  
Fax +61 2 9671 9911  
info@weidmuller.com.au  
www.weidmuller.com.au

### AZ Azerbaijan

Representative Office  
Rashad Mahmudov  
Demirchi Tower, 4th floor  
37, Khojali ave.  
AZ 1025 Baku  
Tel. +994 12 488 80 36  
Fax +994 12 488 80 37  
rashad.mahmudov@  
weidmuller.com

### BA Bosnia and Herzegovina

Please contact  
our Representative Office  
Weidmüller Interface GmbH  
& Co. KG  
Serbia

or

BIG electric d.o.o  
Mladena Stojanovića 117A  
78000 Banja Luka  
Tel. +387 51926277  
Fax +387 51926277  
bigelectric@blic.net  
www.bigelectric.ba

### BE Belgium

Weidmüller Benelux B. V.  
Mechelsesteenweg 519 bus  
6 en 7  
1930 Nossegem  
Tel. +32 2 752 40 70  
Fax +32 2 751 36 06  
info@weidmuller.be  
www.weidmuller.be

### BG Bulgaria

Weid-Bul EOOD  
Bul. „Kliment Ohridski“ 13  
1756 Sofia  
Tel. +359 2 963 2560  
Fax +359 2 963 1098  
sofia@weidbul.com  
www.weidbul.com

### BH Bahrain

Khayber Trading Company  
P.O Box 1976  
Manama  
Tel. +973 720747  
Fax +973 720331  
khayber@batelco.com.bh

### BR Brazil

Weidmüller Conexel do Brasil  
Conexões Elétricas Ltda.  
Av. Presidente Juscelino, 642  
- Piraporinha  
Diadema, São Paulo  
09950-370  
Tel. +55 (11) 4366-9600  
Fax +55 (11) 4362-1677  
vendas@weidmuller.com.br  
www.weidmuller.com.br

### BW Botswana

Please contact  
Phambili Interface  
South Africa

### BY Belarus

TECHNIKON Ltd.  
Nezavisimosti pr. 177-9  
220125 Minsk  
Tel. +375 17 393-11-77  
Fax +375 17 3930080  
wm@technikon.by

### CA Canada

W Interconnections Canada  
Inc.  
10 Spy Court  
Markham Ontario L3R 5H6  
Tel. +1 (905) 475-1507  
Ext. 9836  
Fax +1 (905) 475-2798  
support@weidmuller.ca  
www.weidmuller.ca

### CG Congo

Please contact  
Phambili Interface  
South Africa

### CH Switzerland

Weidmüller Schweiz AG  
Rundbuckstraße 2  
8212 Neuhausen am  
Rheinfall SH  
Tel. +41 52 674 07 07  
Fax +41 52 674 07 08  
info@weidmuller.ch  
www.weidmuller.ch

### CL Chile

ATS-INTECH  
María Luisa Santander 0475  
Santiago  
Providencia 7500859  
Tel. +56 2 341 1271  
Fax +56 2 341 1275  
felipe@atsintech.com  
www.atsintech.com  
CPI CHILE LTDA  
Av. Presidente Frei Montalva  
6001, 47 complejo el cortijo  
Santiago - Conchalí  
Tel. +562 963 8440  
Fax +562 963 8440  
cpi@cpichile.cl  
www.cpicichile.cl

### CN China

Weidmüller Interface  
(Shanghai) Co. Ltd.  
100 Yutong Road  
25 F, BM Intercontinental  
Business Center  
200070 Shanghai  
Tel. +86 21-22195008  
Fax +86 512-68417505  
customer.hotline@  
weidmuller.com.cn  
www.weidmuller.com.cn

### CO Colombia

Automatización Avanzada  
S. A.  
Carrera 97 No., 24 c- 23  
Bodega 4  
110911 Bogotá-D.C.  
Tel. +57 (1) 547-8510  
Fax +57 (1) 422-3044  
comercial@  
automatizacionavanzada.com  
www.  
automatizacionavanzada.com

### CR Costa Rica

ELVATRON S. A.  
la Uruca 400 Norte Banco  
Costa Rica  
San Jose Costa Rica  
Tel. +506 2961-060  
Fax +506 5200-609  
dirk.haase@elvatron.com  
www.elvatron.com

### CZ Czech Republic

Weidmüller s.r.o.  
Lomnického 5/1705  
140 00 Praha 4  
Tel. +420 244 001 400  
Fax +420 244 001 499  
office@weidmuller.cz  
www.weidmuller.cz

### DE Germany

Weidmüller GmbH & Co. KG  
Ohmstraße 9  
32758 Detmold  
Postfach 30 54  
32720 Detmold  
Tel. +49 5231 1428-0  
Fax +49 5231 14-292083  
weidmuller@weidmuller.de  
www.weidmuller.de

### DK Denmark

Weidmüller Danmark  
Vallensbækvej 18A  
2605 Brøndby  
Tel. +45 27747800  
kundeservice@weidmuller.dk  
www.weidmuller.dk

### EC Ecuador

Elsystec S. A., Electricidad  
Sistemas y Tecnología  
Vasco de Contreras N35-25 1  
y Mañosca  
Quito - Pichincha  
Tel. +593 22456510  
Fax +593 22456755  
Elsystec@uio.satnet.net

### EE Estonia

Please contact  
our Representative Office  
Weidmüller Interface GmbH  
& Co. KG  
Latvia

or

Soots Interface OÜ  
Pärnu mnt 142  
11317 Tallinn  
Tel. +372 609 6933  
Fax  
info@sootsinterface.ee  
www.sootsinterface.ee

### EG Egypt

Standard Electric (OMEGA)  
87, Mohamed Farid Street  
Heliopolis  
Cairo  
Tel. +202 26229000  
Fax +202 26221555  
stdelec@rite.com

### ES Spain

Weidmüller, S. A.  
Narcis Monturiol 11-13, Pol.  
Ind. Sudoeste  
8960 Sant Just  
Desvern - Barcelona  
Tel. +34 934 803 386  
Fax +34 933 718 055  
weidmuller@weidmuller.es  
www.weidmuller.es

### FI Finland

Weidmüller Suomi,  
Weidmüller Aktiebolagetin  
sivulike  
Koy Plaza Vivace  
Aymite 6C  
FI 1510 Vantaa  
Tel. +358 20 7351300  
Fax +358 800 114 667  
asiakaspalvelu@weidmuller.fi  
www.weidmuller.fi

### FR France

Weidmüller E. U. R. L.  
12, Chaussée Jules César  
BP 263 Osny  
95623 Cergy-Pontoise Cedex  
Tel. +33 1 34 24 65 00  
Fax +33 1 34 24 65 01  
mail@weidmuller.fr

### GB Great Britain

Weidmüller Ltd.  
Klippon House  
Centurion Court Office Park,  
Meridian East, Meridian  
Business Park  
Leicester  
LE19 1TP  
Tel. +44 116 282 3470  
Fax +44 116 289 3582  
marketing@weidmuller.co.uk  
www.weidmuller.co.uk

### GE Georgia

Please contact  
our Representative Office  
Rashad Mahmudov  
Azerbaijan.

### GH Ghana

Please contact  
Weidmüller Interface GmbH  
& Co. KG  
South Africa

### GR Greece

G.A. Solutions  
Ippokratous 11 Metamorfois  
144 52 Athen  
Tel. +30 210 2823233  
Fax +30 210 2823233  
info@weidmuller.gr  
www.weidmuller.gr

### GT Guatemala

Prestelectro, Prestegard  
Electro, S.A.  
Avenida Petapa 44-22,  
Zona 12  
Guatemala City  
Tel. +502 2442-3346  
Fax +502 2476-8945  
ventas@prestelectro.com

### HK Hong Kong

Weidmüller (Hong Kong)  
Limited Co. Ltd.  
Unit 1617, Metropolis Tower  
No. 10 Metropolis Drive,  
Hung Hom, Kowloon  
Tel. +852 3154 8088  
Fax +852 31548099  
Info-hk@weidmuller.com.hk

### HR Croatia

ElektroPARTNER d.o.o.  
Slavonska avenija 24/6  
HR-10000 Zagreb  
Tel. +385 (1) 6184 793  
Fax +385 (1) 6184 795  
elektropartner@zg-t-com.hr  
www.elektropartner.hr

### HU Hungary

Weidmüller Kereskedelmi Kft.  
Budapest  
Gubacsi út 6.  
1097  
Tel. +36 1 382 7700  
Fax +36 1 382 7701  
info@weidmuller.hu  
www.weidmuller.hu

### ID Indonesia

PT. Nego Electrindo  
Ruko Mega Grosir Cempaka  
Mas Blok I No. 20 - 22  
Jakarta 10640  
Tel. +62 21 42882255  
Fax +62 21 42882266  
sales@negoelectrindo.co.id

### IE Ireland

Please contact  
Weidmüller Ltd.  
Great Britain

### IL Israel

A. U. Shay Ltd.  
23/25, Embar Street  
49222 Petach-Tikva  
P.O. Box 1 00 49  
49222 Petach-Tikva  
Tel. +972 3-923-3601  
Fax +972 3-923-4601  
shay@uriel-shay.com  
www.uriel-shay.com

### ATEKA Ltd.

4, Ha Tavor lane Industrial  
area Segula  
49691 Petach-Tikva  
P.O. Box 4710  
Petach-Tikva  
Tel. +972 73-200-1311  
Fax +972 3-924 4245  
marketing@ateka.co.il  
www.ateka.co.il

### IN India

Representative Office  
Weidmüller Electronics India  
Pvt. Ltd.  
12th Lane North Avenue, Opp  
Joggers Park,  
Kalyani Nagar, Pune  
411 006  
Tel. +91 20-41290090  
Nitish.Rajan@weidmuller.de  
www.weidmuller.com

### IS Iceland

Samey Automation Center  
Lyngas 13  
210 Garabaer  
Tel. +354 510 5200  
Fax +354 510 5201  
Samey@samey.is  
www.samey.is

### IT Italy

Weidmüller S. r.l.  
Via Albert Einstein 4  
20092 Cinisello  
Balsamo Milano  
Tel. +39 02 660681  
Fax +39 02 6124945  
weidmuller@weidmuller.it  
www.weidmuller.it

### JM Jamaica

Please contact  
W Interconnections Inc.  
United States

### JO Jordan

Trans Jordan for Electro  
PO Box 33 06 07  
Amman  
Tel. +962 6 533 2020  
Fax +962 6 533 5800  
transjordan@batelco.jo

### JP Japan

Nihon Weidmüller Co. Ltd.  
Sphere Tower Tennoz 2-2-8  
Higashi-Shinagawa,  
Shinagawa-ku  
Tokyo  
140-0002  
Tel. +81 3 6711 5300  
Fax +81 3 6711 5333  
weidmullerjapan@weidmuller.  
co.jp  
www.weidmuller.co.jp

### KE Kenya

Please contact  
Phambili Interface  
South Africa

### KR Korea

Weidmüller Korea Co. Ltd.  
9th floor, Wonbang B/D  
Samseong 2-Dong, Gangnam-Gu  
Seoul 143-42  
Tel. +82 2-516-0003  
Fax +82 2-516-0090  
info@weidmuller.co.kr  
www.weidmuller.co.kr

### KZ Kazakhstan

Please contact  
OOO Weidmüller  
Russia

### LT Lithuania

Please contact  
our Representative Office  
Weidmüller Interface GmbH  
& Co. KG  
Latvia

or

ELEKTROS IRANGA  
Tinklų g. 29 a  
LT-5319 Panevėžys  
Tel. +370 (45) 582 828  
Fax  
info@eliranga.lt

### LU Luxembourg

Please contact  
Weidmüller Benelux B. V.  
Netherlands

### LV Latvia

SIA Abi4  
Daugavgrivas 31b  
Rīga, LV-1007  
Petach-Tikva  
Tel. +371 674 70999  
Fax +371 674 65637  
abi\_4@tvnet.lv

Representative Office  
Weidmüller Interface GmbH  
& Co. KG  
Udens str. 12-118  
Rīga, LV-1007  
Tel. +371 29254766  
Fax +371 674 65637  
Ilgonis.rudaks@weidmuller.  
com  
www.weidmuller.com



You can find all Weidmüller addresses and your local contact on the internet at: [www.weidmuller.com/countries](http://www.weidmuller.com/countries)

Let's connect.

Sales company

Representation abroad

without representation abroad

- MD Moldova**  
BERHORD A & D srl  
79/1, str. Milescu Spartaru  
MD-2075 Chisinau  
Moldova  
Tel. +373 (22) 815002  
Fax +373 (22) 815007  
atiuleanu@berhord.com  
www.ad.berhord.com
- ME Montenegro**  
Please contact  
our Representative Office  
Weidmüller Interface GmbH  
& Co. KG  
Serbia.
- MG Madagascar**  
Please contact  
Phambili Interface  
South Africa
- MK Macedonia**  
Please contact  
our Representative Office  
Weidmüller Interface GmbH  
& Co. KG  
Serbia  
  
or  
ELEKTRO - SMK doel  
UL. III Makedonska brigada  
b.b.  
1000 Skopje  
Tel. +389 22460295  
Fax  
Elektro-smk@telekabel.net.mk
- MT Malta**  
E. S. S., Electrical Supplies &  
Services Ltd.  
San Gwakkim Road  
Mriehel  
  
Tel. +356 2 1255777  
Fax +356 2 1255999  
robert.agius@ess.com.mt
- MU Mauritius**  
Mubelo Electrical Ltd.  
Office 26, Gateway building,  
St Jean Road  
Quatre Bornes  
Mauritius  
Tel. +230 4670989  
Fax +230 4654051  
richard.mubelo@orange.mu
- MW Malawi**  
Please contact  
Phambili Interface  
South Africa
- MX Mexico**  
W Interconnections S. A.  
DE C. V.  
Blvd. Hermanos Serdán 698,  
Col. San Rafael Oriente  
72029 Puebla  
Tel. +52 (222) 268 6227  
Fax +52 (222) 286 6242  
clientes@weidmuller.com.mx
- MY Malaysia**  
Connect Plus Technology  
Sdn Bhd  
No. 43, Jalan PJS 11/22,  
Bandar Sunway  
46150 Petaling Jaya  
Selangor Darul Ehsan  
Tel. +60 3 5633 7363  
Fax +60 3 5633 6562  
paul@cptech.com.my  
www.cptech.com.my
- MZ Mozambique**  
Please contact  
Phambili Interface  
South Africa
- NA Namibia**  
Please contact  
Phambili Interface  
South Africa
- NG Nigeria**  
Please contact  
Weidmüller Interface GmbH  
& Co. KG  
South Africa
- NL Netherlands**  
Weidmüller Benelux B. V.  
Franciscusweg 221  
1216 SE Hilversum  
P.O. Box 1505  
1200 BM Hilversum  
Tel. +31 35 626 12 61  
Fax +31 35 623 20 44  
info@weidmuller.nl  
www.weidmuller.nl
- NO Norway**  
Sivilingeniør J.F. Knudtzen AS  
Billingstadsletta 97  
1396 Billingstad  
PO Box 160  
1378 Nesbru  
Tel. +47 66 98 33 50  
Fax +47 66 98 09 65  
firmapost@jfknudtzen.no  
www.jfknudtzen.no
- NZ New Zealand**  
Cuthbert S. Steward Ltd.  
27 Te Puni Street  
Petone  
PO Box 38496  
Wellington Mail Centre 5054  
Tel. (04) 568 6156  
Fax (09) 489 1752  
csl@cuthbertsteward.co.nz  
  
Cuthbert S. Steward Ltd  
4 Fred Thomas Drive  
Aon Building, Ground Floor,  
South Entry  
Takapuna  
PO Box 100 338  
North Shore City 745  
Tel. (09) 489 1751  
Fax (04) 568 6056  
cslak@cuthbertstewart.co.nz
- OM Oman**  
DAN INTERNATIONAL LLC.  
Ghala St. 111  
BP 2901  
Seeb  
Tel. +968 5036 77  
Fax +968 5037 55  
yed@danintl.com
- PE Peru**  
IMPEXINCA S.A.C.  
Calle Ortiz de Zavallos No.  
105, Urb. San Antonio  
18  
Lima, Miraflores  
Tel. +51 1 447 5608  
info@impexinca.pe  
www.impexinca.pe  
  
J & W CIA. S. A.  
Calle 6 Mz. D Lte. 23, Urb.  
Ind. Grimanesa  
01  
Callao  
Tel. +51 1 572 2539  
Fax +51 1 572 0152  
contacto@jwcia.com  
www.jwcia.com
- PH Philippines**  
Enclosure Systems Specialists  
Inc.  
2276 Don Chino Roces  
Avenue Extension  
Room 103/105 Narra Building  
1231 Makati City  
Tel. +63 2 813 8580  
Fax +63 2 813 8596  
sales\_encsys@pltdtdsl.net  
www.enclosuresystemsph.com
- PK Pakistan**  
Automation Controls (Pak)  
Apartment No. 33 C III,  
Chenab Block, Allama Iqbal  
Town  
Lahore  
Tel. +92 42 37809948  
Fax +92 42 37809950  
nadeem@acpak.com.pk  
www.acpak.com.pk
- PL Poland**  
Weidmüller Sp. z o. o.  
ul. Ogrodowa 58  
00-876 Warszawa  
Tel. +48 22 510 09 40  
Fax +48 22 510 09 41  
biuro@weidmuller.com.pl  
www.weidmuller.pl
- PR Puerto Rico**  
Please contact  
W Interconnections Inc.  
United States
- PT Portugal**  
Weidmüller Sistemas de  
Interface S. A.  
Estrada Outeiro Polima, R.  
Augusto Dias da Silva, Lote  
B - Esc. 2  
São Domingos de Rana  
2785-515 Abóboda  
Tel. +351 214 459 191  
Fax +351 214 455 871  
weidmuller@weidmuller.pt  
www.weidmuller.pt
- PY Paraguay**  
Please contact  
CPI SA  
Argentina
- RO Romania**  
Representative Office  
Weidmüller Interface GmbH  
& Co. KG  
Ionescu Crum Street, No.  
1, 1st Tower, 1st Floor,  
Office 4  
500446 Brasov - Brasov  
Business Park  
Tel. +40 (268) 446 222  
Fax +40 (262) 205 410  
claudiu.totea@weidmueller.com  
www.weidmueller.com
- RS Serbia**  
Representative Office  
Weidmüller Interface GmbH  
& Co. KG  
Ustanicka 189, III sprat  
lokal 7a  
11050 Beograd  
Tel. +381 112885274  
Fax +381 112885274  
zoran.rabrenovic@  
weidmueller.com
- RU Russia**  
OOO Weidmüller  
Warshavskoye highway, 25  
A, bld. 6  
Moskau  
117105  
Tel. +7 (495) 771-69-40  
Fax +7 (495) 771-69-41  
Info@weidmueller.ru  
www.weidmueller.ru
- SA Saudi Arabia**  
Please contact  
Weidmüller Middle East FZE  
United Arab Emirates
- SE Sweden**  
Weidmüller AB  
Axel Danielssons väg 271  
BOX 31025  
SE-200 49 Malmö  
Tel. +46 77-143 00 44  
Fax +46 40-37 48 60  
info@weidmuller.se  
www.weidmuller.se
- SG Singapore**  
Weidmüller Pte. Ltd.  
70 Bendemeer Road  
# 04-03 Luzerne Building  
Singapore 339940  
Tel. +65 6841 5311  
Fax +65 6841 5377  
info@weidmuller.com.sg  
www.weidmuller.com.sg
- SI Slovenia**  
Elektrospoji d. o. o.  
Stegne 27  
SI- 1000 Ljubljana  
Osrednjėslovenska  
Tel. +386 1 511 3810  
Fax +386 1 511 1604  
info@elektrospoji.si  
www.elektrospoji.si
- SK Slovakia**  
ELEKTRIS s.r.o.  
Elektrárėnská 1  
831 04 Bratislava  
Tel. +421 2/4920 0113  
Fax +421 2/4920 0119  
bratislava@elektris.sk
- SV El Salvador**  
Prestegard Electro  
11 Avenida Norte No. 240  
Edificio Salazar No. 2  
San Salvador  
Tel. +503 2271 1690  
Fax +503 2221 3851  
prestegard@navegante.com.sv
- SY Syria**  
Please contact  
Weidmüller Middle East FZE  
United Arab Emirates
- SZ Swaziland**  
Please contact  
Phambili Interface  
South Africa
- TH Thailand**  
Pisanu Engineering Co. Ltd.  
Kwang Dingaeng, Khet  
Dingaeng  
800/2 Soi Trakulsuk, Asoke-  
dindaeng Road  
Dindaeng, Bangkok  
10400  
Tel. +66 2 248 2896  
Fax +662 105 6301  
ecsales@pisanu.co.th  
www.pisanu.co.th  
  
Representative Office  
Weidmüller Pte. Ltd.  
37/F, Sathorn Square Building  
98 North Sathorn Road  
Bangkok, Silom Bangrak  
10500  
Tel. +66 2 105 6300  
Fax +66 2 642 9220  
info@weidmuller.com.sg
- TN Tunisia**  
Please contact  
Weidmüller E. U. R. L.  
France
- TR Turkey**  
Weidmüller Elektronik Ticaret  
Ltd. Sirketi  
Kavacik Mah. Orhan Veli Kanik  
Caddesi 9/1  
34810 Beykoz / Istanbul  
Tel. +90 (216) 537 10 70  
Fax +90 (216) 537 10 77  
info@weidmuller.com.tr  
www.weidmuller.com.tr
- TW Taiwan**  
Weidmüller (Hong Kong)  
Limited  
No. 3, Lane 89, ChungYang  
N. Rd  
24148 SanChuang City,  
Taipei  
Tel. +886 921 949 751  
roy.lin@weidmueller.com.hk
- TZ Tanzania**  
Please contact  
Phambili Interface  
South Africa
- UA Ukraine**  
LLC WM UKRAINE  
Levanevskogo str. 6  
Kiev  
3058  
Tel. +38 044 490 32 48  
Fax  
info@wm-ua.com.ua  
wm-ua.com.ua/  
  
Representative Office  
Weidmüller Interface GmbH  
& Co. KG  
Z, office 303  
7-D, Zdolbunivska str.  
Kiev, 2081  
Mobile +38 050 440 25 24  
info.ua@weidmueller.com
- US United States**  
W Interconnections Inc.  
821 Southlake Boulevard  
Richmond Virginia 23236  
Tel. +1 (804) 794-2877  
Fax +1 (804) 379-2593  
info@weidmuller.com  
www.weidmuller.com
- UZ Republic of Uzbekistan**  
Please contact  
OOO Weidmüller  
Russia
- VN Vietnam**  
AUMI Industrial Equipment &  
Automation Company Limited  
E1, La Thanh Hotel  
218 Doi Can Street  
Lieu Giai Ward, Ba Dinh  
District  
Hanoi City  
Tel. +84 4 37628601  
Fax +84 4 62661391  
aumi@aumi.com.vn  
www.aumi.com.vn  
  
Representative Office  
Weidmüller Pte. Ltd.  
Level 16 Saigon Tower  
Building  
29 Le Duan Street  
District 1  
Ho Chi Minh  
Tel. +848 3520 7717  
Fax +848 3520 7604  
info@weidmuller.com.sg
- ZA South Africa**  
Phambili Interface  
PO Box 193  
1609 Johannesburg, Edenvale  
5 Bundo Road, Sebenza  
1610 Johannesburg  
Tel. +27 (11) 4521930  
Fax  
info@weidmuller.co.za  
www.weidmuller.co.za  
  
Representative Office  
Weidmüller Interface GmbH  
& Co. KG  
210 Amarand  
Avenue, Pegasus Building  
181 Pretoria, waterkloof Glen  
ext 2 -  
Tel. +27 12 003 2906  
Fax +27 (11) 4526455  
Jacques.Vosloo@weidmueller.com  
www.weidmueller.com
- ZM Zambia**  
Please contact  
Phambili Interface  
South Africa
- ZW Zimbabwe**  
Please contact  
Phambili Interface  
South Africa



We cannot guarantee that there are no mistakes in the publications or software provided by us to the customer for the purpose of making orders. We try our best to quickly correct errors in our printed media.

**X**

All orders are based on our general terms of delivery, which can be reviewed on the websites of our group companies where you place your order. On demand we can also send the general terms of delivery to you.

## **Weidmüller – Your partner in Industrial Connectivity**

As experienced experts we support our customers and partners around the world with products, solutions and services in the industrial environment of power, signal and data. We are at home in their industries and markets and know the technological challenges of tomorrow. We are therefore continuously developing innovative, sustainable and useful solutions for their individual needs. Together we set standards in Industrial Connectivity.

Weidmüller Interface GmbH & Co. KG  
Klingenbergstraße 16  
32758 Detmold, Germany  
T +49 5231 14-0  
F +49 5231 14-292083  
info@weidmueller.com  
www.weidmueller.com

Your local Weidmüller partner can  
be found on our website:  
[www.weidmueller.com/countries](http://www.weidmueller.com/countries)

Made in Germany



Order number: 1541050000/01/2015/SMKW