

# Additional Structure brings Added Value

## Cable ducts from Weidmüller

Let's connect.

Cabinet Infrastructure: Cable Ducts



# Incorporate the structures for flexibility within the cabinet

## Cable ducts as the basis for ordered cable routing

### Additional Structure brings Added Value

Increasing trends in digitalisation require higher packing densities in the cabinet. To maintain order within the cabinet, a clear and space-saving cable routing system is required. This is more than just an optical aspect, because orderly cable routing saves time and money. It facilitates maintenance and repair work and increases general operational safety.

As a partner for Industrial Connectivity, we know the challenges faced and provide you with a comprehensive range of cable ducts and accessories for all applications. Practical details like wire holding lugs for the fixing of already installed wires, as well as precisely punched holes according to DIN EN 50085-2-3, facilitate accurate installation. The clever closing mechanism allows easy latching and ensures a secure fit when closing the lid.

Together, we create sustainable structures with added value. We support you in all work steps from planning through to implementation and ongoing operation. Let's connect.



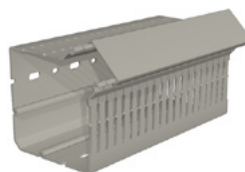
**Metric**



**DIN**



**Corner cable duct**



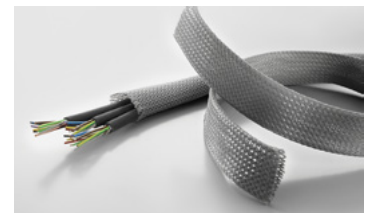
**Protective tube**



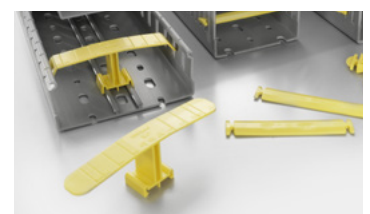
**Halogen-free  
-25 to 105 ° C**



**Halogen-free  
-25 to 120 ° C**



**Equipment**



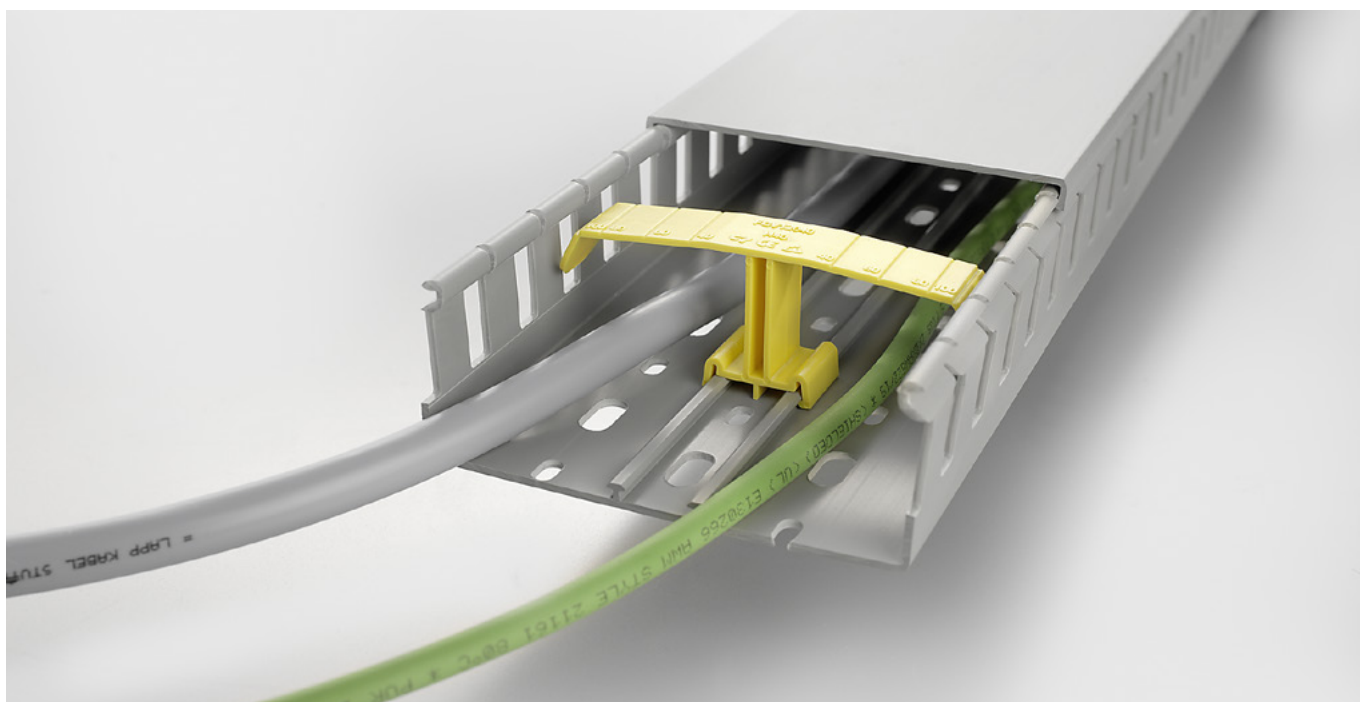
### Perfectly coordinated complete system

Our product range includes cable ducts in metric versions as well as corner and DIN ducts. There are also variants made of halogen-free material. The range is supplemented by protective tubes, holders, separators, and professional marking solutions.

# An complete system that adds real value

## Cable ducts from Weidmüller

Save time and money with quick, easy installation and high flexibility in operation. Our wide product range of cable ducts is complemented with a large number of useful accessories to support your cabinet.



### Flexible system solution

With our cable ducts, we provide you with a flexible wiring system that offers a wide array of accessories and exceptional product features. These include, for example, guide rails for latching holding clamps or dividers. In addition, wire retaining lugs serve as a fixation aid for already installed wires.

### Durable and functional

The superior quality of our cable ducts allows durable structures to be created, for an orderly cable routing within the cabinet. High stability, minimal torsion, and precisely punched bottom holes according to DIN EN 50085-2-3 make the installation quick and easy. The lid can be easily clipped on, its functional locking mechanism guarantees a secure fit.

### Your advantages:

- Comprehensive product range from a single source
- Sophisticated system solution with added value
- High flexibility because of a wide accessory range

# Your easy way to flexible and durable cable routing

## The complete range of cable ducts from a single source

Orderly and flexible cable routing in the cabinet not only gives a good impression, but is also essential for functional and safe operation. With our cable ducts, we offer you a complete range from one source. Benefit from our sturdy, torsion-free cable ducts with clever details for quick and efficient installation.

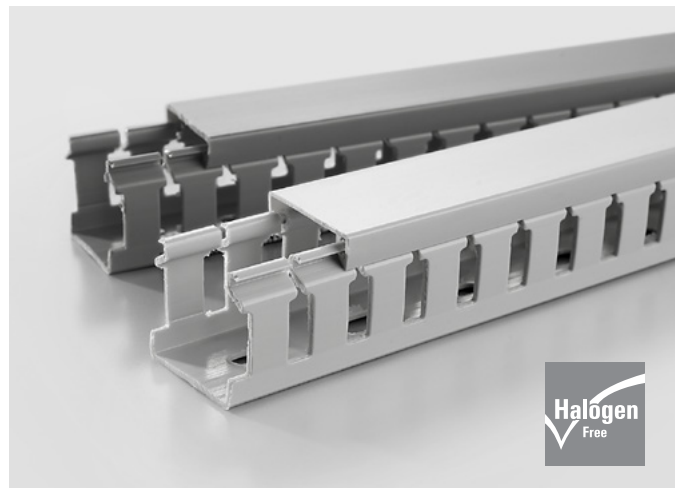
Our wide range of cable routing systems include metric cable ducts, DIN cable ducts and corner cable ducts.



### Cable ducts

Our cable ducts are available in two basic versions: Metric and DIN. They differ in the slit width and the distance of slots. Ducts with finer slit width are advantageous for applications with small cable cross-sections in conjunction with terminal blocks. The variants designed as corner channels are particularly suitable for control cabinets with limited space and a high line density.

Halogen-free cable ducts offer you more operational safety in areas of increased fire protection.



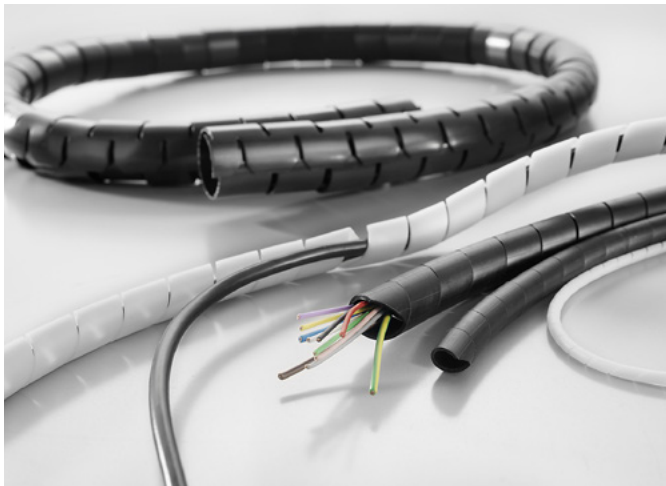
### Halogen-free cable ducts

In applications where increased fire protection is required, our halogen-free cable ducts offer a higher level of operational safety. They are mainly used in traffic engineering, but also in tunnel systems or for building infrastructure. Our halogen-free materials are characterised by low smoke development and non-toxic waste gases.

### Your advantages:

- Sturdy cable ducts without torsion
- Wire holding lugs as a fixation aid
- Precisely punched bottom holes according to DIN EN 50085-2-3
- Secure fitting lid thanks to an optimum locking mechanism

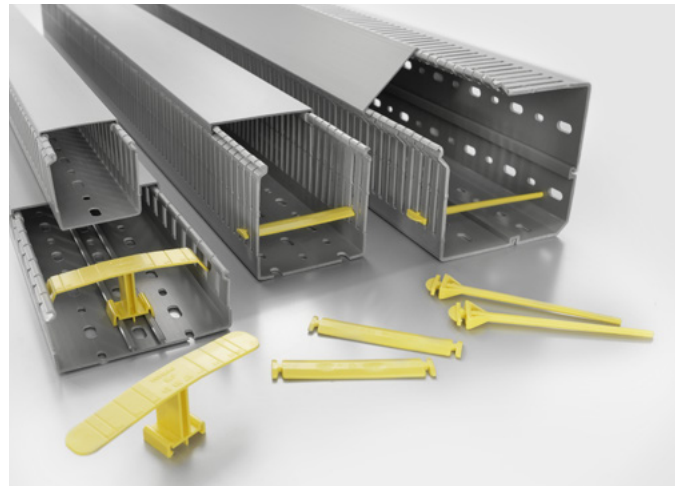
Spiral and webbing hoses bundle and protect your cables.



### Cable protection conduits

Spiral and webbing hoses are particularly suitable for the construction of space-saving cable routing systems in switch gears and control cabinets. They are used for guiding, protecting and bundling cables and wires - for example, in the transition between the enclosure interior and the door.

More flexibility and efficiency with holders and separators for simple assembly.



### Accessories

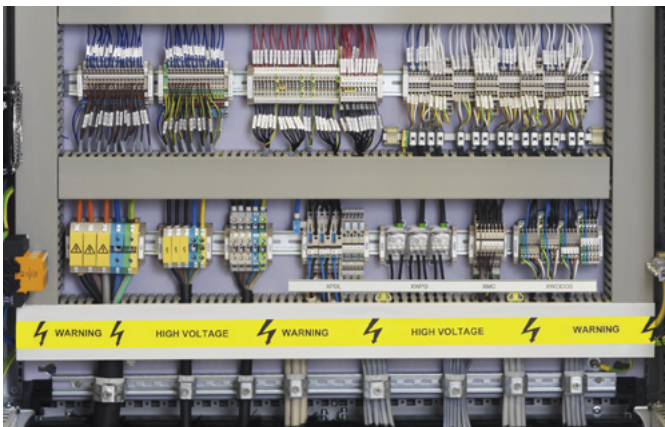
With our practical accessories, you can prevent already installed cables and wires from falling out of the cabinet. This simplifies assembly and saves time. Data and power cables can be separated from each other with dividers in the same channel. The covers are also available as accessories and can be ordered individually if required.

# Optimum design flexibility allows clear and simple identification

## Marking solutions from Weidmüller

The internal order of a cabinet must be assessed at a glance during service work. Therefore, clear identification of the installed components is necessary. As a perfect complement to our wiring channels, MultiMark provides you with a complete system of appropriate marking solutions.

MultiMark endless labels for an economical and flexible marking via thermal transfer printing.



### MultiMark labels

MultiMark endless labels are an economical alternative to conventional tag rails or special labels, and can be printed with our thermal transfer printer THM MultiMark. They have a predefined width and its length can be adjusted exactly to the length of text created by the printer software. A cutter that can be attached to the printer, cuts the labels individually to the specified size. Ideal for large area marking of function or terminal blocks.

The universal tag rails can be securely attached to wiring ducts with glue.

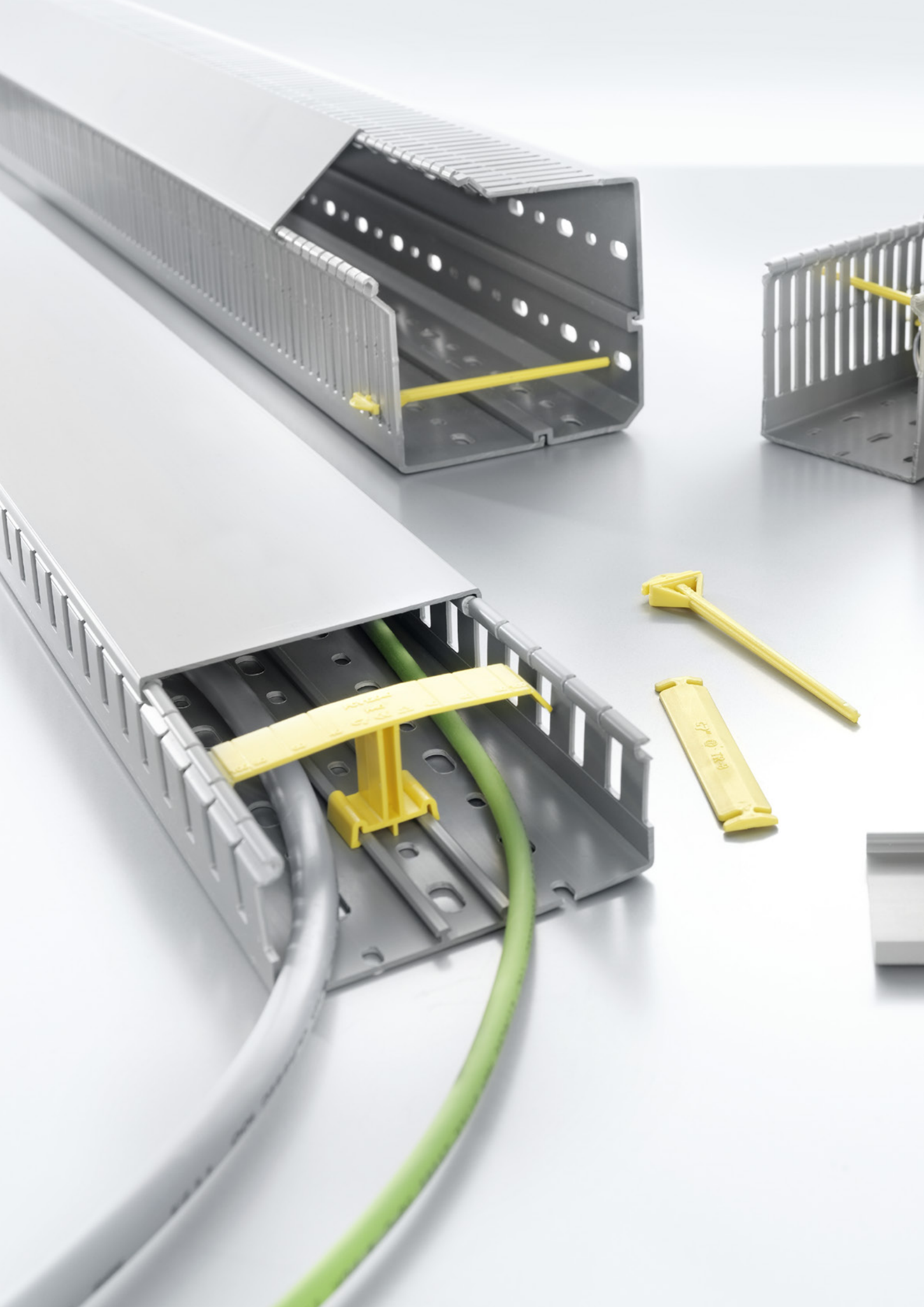


### MultiCard and tag rails

Particularly in the case of aligned modular devices, our tag rails are ideal for clear marking with high contrast. Our tag rails made of sturdy PVC are equipped with secure locking MultiCard markers which easily snap in.

#### Your advantages:

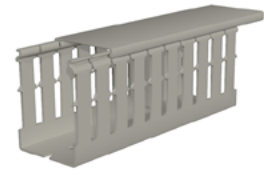
- Simple assignment of supplementary information on the equipment
- Custom lengths as the material is available on the roll and cut according to the requirements
- Flexible thanks to the use of Weidmüller labelling systems



**Metric cable duct, slit width 8 / slit clearance 12**

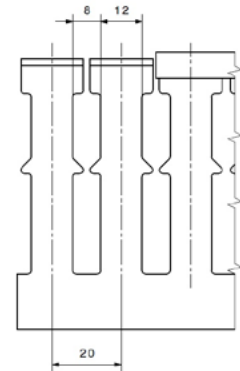
**Technical data**

| Material | Colour | Length  | Operating temperature | Fire class acc. to UL 94 |
|----------|--------|---------|-----------------------|--------------------------|
| PVC      | Grey   | 2000 mm | -5...60 °C            | V-0                      |



**Ordering data**

| Order No.  | Type                  | Height | Width  | Slit width | Slit gap | Qty. [m] |
|------------|-----------------------|--------|--------|------------|----------|----------|
| 2588450000 | CD 30X25 8/12 GY      | 30 mm  | 25 mm  | 8.00 mm    | 12.00 mm | 80       |
| 2588560000 | CD 30X40 8/12 GY      | 30 mm  | 40 mm  | 8.00 mm    | 12.00 mm | 48       |
| 2588650000 | CD 30X60 8/12 GY      | 30 mm  | 60 mm  | 8.00 mm    | 12.00 mm | 32       |
| 2588460000 | CD 40X25 8/12 GY      | 40 mm  | 25 mm  | 8.00 mm    | 12.00 mm | 60       |
| 2588580000 | CD 40X40 8/12 GY      | 40 mm  | 40 mm  | 8.00 mm    | 12.00 mm | 40       |
| 2588660000 | CD 40X60 8/12 GY      | 40 mm  | 60 mm  | 8.00 mm    | 12.00 mm | 24       |
| 2588730000 | CD 40X80 8/12 GY      | 40 mm  | 80 mm  | 8.00 mm    | 12.00 mm | 24       |
| 2588800000 | CD-BO 40X100 8/12 GY  | 40 mm  | 100 mm | 8.00 mm    | 12.00 mm | 16       |
| 2588890000 | CD-BO 40X120 8/12 GY  | 40 mm  | 120 mm | 8.00 mm    | 12.00 mm | 20       |
| 2588510000 | CD 60X25 8/12 GY      | 60 mm  | 25 mm  | 8.00 mm    | 12.00 mm | 40       |
| 2588600000 | CD 60X40 8/12 GY      | 60 mm  | 40 mm  | 8.00 mm    | 12.00 mm | 36       |
| 2588680000 | CD 60X60 8/12 GY      | 60 mm  | 60 mm  | 8.00 mm    | 12.00 mm | 24       |
| 2588750000 | CD 60X80 8/12 GY      | 60 mm  | 80 mm  | 8.00 mm    | 12.00 mm | 24       |
| 2588820000 | CD 60X100 8/12 GY     | 60 mm  | 100 mm | 8.00 mm    | 12.00 mm | 20       |
| 2588910000 | CD-BO 60X120 8/12 GY  | 60 mm  | 120 mm | 8.00 mm    | 12.00 mm | 16       |
| 2588960000 | CD-BO 60X150 8/12 GY  | 60 mm  | 150 mm | 8.00 mm    | 12.00 mm | 12       |
| 2589010000 | CD-BO 60X200 8/12 GY  | 60 mm  | 200 mm | 8.00 mm    | 12.00 mm | 8        |
| 2588530000 | CD 80X25 8/12 GY      | 80 mm  | 25 mm  | 8.00 mm    | 12.00 mm | 32       |
| 2588610000 | CD 80X40 8/12 GY      | 80 mm  | 40 mm  | 8.00 mm    | 12.00 mm | 24       |
| 2588700000 | CD 80X60 8/12 GY      | 80 mm  | 60 mm  | 8.00 mm    | 12.00 mm | 24       |
| 2588770000 | CD 80X80 8/12 GY      | 80 mm  | 80 mm  | 8.00 mm    | 12.00 mm | 24       |
| 2588840000 | CD 80X100 8/12 GY     | 80 mm  | 100 mm | 8.00 mm    | 12.00 mm | 16       |
| 2588920000 | CD-BO 80X120 8/12 GY  | 80 mm  | 120 mm | 8.00 mm    | 12.00 mm | 16       |
| 2588970000 | CD-BO 80X150 8/12 GY  | 80 mm  | 150 mm | 8.00 mm    | 12.00 mm | 12       |
| 2589030000 | CD-BO 80X200 8/12 GY  | 80 mm  | 200 mm | 8.00 mm    | 12.00 mm | 8        |
| 2588540000 | CD 100X25 8/12 GY     | 100 mm | 25 mm  | 8.00 mm    | 12.00 mm | 24       |
| 2588630000 | CD 100X40 8/12 GY     | 100 mm | 40 mm  | 8.00 mm    | 12.00 mm | 16       |
| 2588720000 | CD 100X60 8/12 GY     | 100 mm | 60 mm  | 8.00 mm    | 12.00 mm | 16       |
| 2588790000 | CD-BO 100X80 8/12 GY  | 100 mm | 80 mm  | 8.00 mm    | 12.00 mm | 16       |
| 2588850000 | CD-BO 100X100 8/12 GY | 100 mm | 100 mm | 8.00 mm    | 12.00 mm | 16       |
| 2588940000 | CD-BO 100X120 8/12 GY | 100 mm | 120 mm | 8.00 mm    | 12.00 mm | 8        |
| 2588990000 | CD-BO 100X150 8/12 GY | 100 mm | 150 mm | 8.00 mm    | 12.00 mm | 8        |
| 2589040000 | CD-BO 100X200 8/12 GY | 100 mm | 200 mm | 8.00 mm    | 12.00 mm | 8        |





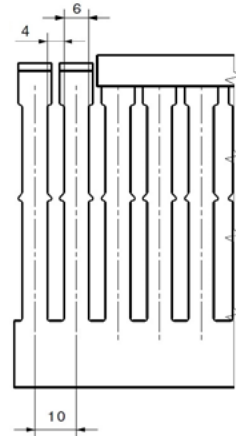
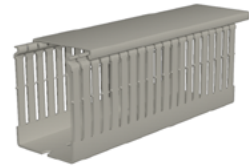
## Metric cable duct, slit width 4 / slit clearance 6

## Technical data

| Material | Colour | Length  | Operating temperature | Fire class acc. to UL 94 |
|----------|--------|---------|-----------------------|--------------------------|
| PVC      | Grey   | 2000 mm | -5...60 °C            | V-0                      |

## Ordering data

| Order No.  | Type                 | Height | Width  | Slit width | Slit gap | Qty. [m] |
|------------|----------------------|--------|--------|------------|----------|----------|
| 2589060000 | CD 17X15 4/6 GY      | 17 mm  | 15 mm  | 4.00 mm    | 6.00 mm  | 120      |
| 2589080000 | CD 30X15 4/6 GY      | 30 mm  | 15 mm  | 4.00 mm    | 6.00 mm  | 96       |
| 2589110000 | CD 30X25 4/6 GY      | 30 mm  | 25 mm  | 4.00 mm    | 6.00 mm  | 80       |
| 2589100000 | CD 40X15 4/6 GY      | 40 mm  | 15 mm  | 4.00 mm    | 6.00 mm  | 72       |
| 2589130000 | CD 40X25 4/6 GY      | 40 mm  | 25 mm  | 4.00 mm    | 6.00 mm  | 60       |
| 2589210000 | CD 40X40 4/6 GY      | 40 mm  | 40 mm  | 4.00 mm    | 6.00 mm  | 40       |
| 2589280000 | CD 40X60 4/6 GY      | 40 mm  | 60 mm  | 4.00 mm    | 6.00 mm  | 24       |
| 2589350000 | CD 40X80 4/6 GY      | 40 mm  | 80 mm  | 4.00 mm    | 6.00 mm  | 24       |
| 2589150000 | CD 60X25 4/6 GY      | 60 mm  | 25 mm  | 4.00 mm    | 6.00 mm  | 40       |
| 2589230000 | CD 60X40 4/6 GY      | 60 mm  | 40 mm  | 4.00 mm    | 6.00 mm  | 36       |
| 2589300000 | CD 60X60 4/6 GY      | 60 mm  | 60 mm  | 4.00 mm    | 6.00 mm  | 24       |
| 2589370000 | CD 60X80 4/6 GY      | 60 mm  | 80 mm  | 4.00 mm    | 6.00 mm  | 24       |
| 2589420000 | CD 60X100 4/6 GY     | 60 mm  | 100 mm | 4.00 mm    | 6.00 mm  | 20       |
| 2589470000 | CD-BO 60X120 4/6 GY  | 60 mm  | 120 mm | 4.00 mm    | 6.00 mm  | 16       |
| 2589180000 | CD 80X25 4/6 GY      | 80 mm  | 25 mm  | 4.00 mm    | 6.00 mm  | 32       |
| 2589240000 | CD 80X40 4/6 GY      | 80 mm  | 40 mm  | 4.00 mm    | 6.00 mm  | 24       |
| 2589310000 | CD 80X60 4/6 GY      | 80 mm  | 60 mm  | 4.00 mm    | 6.00 mm  | 24       |
| 2589380000 | CD 80X80 4/6 GY      | 80 mm  | 80 mm  | 4.00 mm    | 6.00 mm  | 24       |
| 2589440000 | CD 80X100 4/6 GY     | 80 mm  | 100 mm | 4.00 mm    | 6.00 mm  | 16       |
| 2589490000 | CD-BO 80X120 4/6 GY  | 80 mm  | 120 mm | 4.00 mm    | 6.00 mm  | 16       |
| 2589190000 | CD 100X25 4/6 GY     | 100 mm | 25 mm  | 4.00 mm    | 6.00 mm  | 24       |
| 2589260000 | CD 100X40 4/6 GY     | 100 mm | 40 mm  | 4.00 mm    | 6.00 mm  | 16       |
| 2589330000 | CD 100X60 4/6 GY     | 100 mm | 60 mm  | 4.00 mm    | 6.00 mm  | 16       |
| 2589400000 | CD-BO 100X80 4/6 GY  | 100 mm | 80 mm  | 4.00 mm    | 6.00 mm  | 16       |
| 2589450000 | CD-BO 100X100 4/6 GY | 100 mm | 100 mm | 4.00 mm    | 6.00 mm  | 16       |
| 2589500000 | CD-BO 100X120 4/6 GY | 100 mm | 120 mm | 4.00 mm    | 6.00 mm  | 8        |



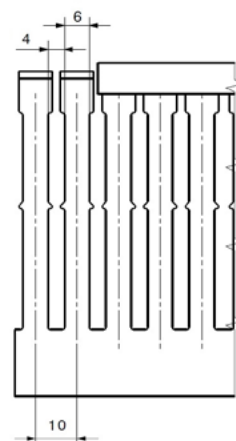
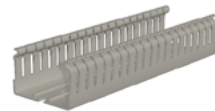
## Cable duct Bottom Rail

## Technical data

| Material | Colour | Length  | Operating temperature | Fire class acc. to UL 94 |
|----------|--------|---------|-----------------------|--------------------------|
| PVC      | Grey   | 2000 mm | -5...60 °C            | V-0                      |

## Ordering data

| Order No.  | Type                 | Height | Width  | Slit width | Slit gap | Qty. [m] |
|------------|----------------------|--------|--------|------------|----------|----------|
| 2589670000 | CD-BO 40X60 4/6 GY   | 40 mm  | 60 mm  | 4.00 mm    | 6.00 mm  | 24       |
| 2589890000 | CD-BO 40X60 8/12 GY  | 40 mm  | 60 mm  | 8.00 mm    | 12.00 mm | 24       |
| 2589600000 | CD-BO 40X80 4/6 GY   | 40 mm  | 80 mm  | 4.00 mm    | 6.00 mm  | 24       |
| 2589820000 | CD-BO 40X80 8/12 GY  | 40 mm  | 80 mm  | 8.00 mm    | 12.00 mm | 24       |
| 2589710000 | CD-BO 60X40 4/6 GY   | 60 mm  | 40 mm  | 4.00 mm    | 6.00 mm  | 36       |
| 2589920000 | CD-BO 60X40 8/12 GY  | 60 mm  | 40 mm  | 8.00 mm    | 12.00 mm | 36       |
| 2589640000 | CD-BO 60X60 4/6 GY   | 60 mm  | 60 mm  | 4.00 mm    | 6.00 mm  | 24       |
| 2589850000 | CD-BO 60X60 8/12 GY  | 60 mm  | 60 mm  | 8.00 mm    | 12.00 mm | 24       |
| 2589570000 | CD-BO 60X80 4/6 GY   | 60 mm  | 80 mm  | 4.00 mm    | 6.00 mm  | 24       |
| 2589800000 | CD-BO 60X80 8/12 GY  | 60 mm  | 80 mm  | 8.00 mm    | 12.00 mm | 24       |
| 2589530000 | CD-BO 60X100 4/6 GY  | 60 mm  | 100 mm | 4.00 mm    | 6.00 mm  | 20       |
| 2589760000 | CD-BO 60X100 8/12 GY | 60 mm  | 100 mm | 8.00 mm    | 12.00 mm | 20       |
| 2589690000 | CD-BO 80X40 4/6 GY   | 80 mm  | 40 mm  | 4.00 mm    | 6.00 mm  | 24       |
| 2589910000 | CD-BO 80X40 8/12 GY  | 80 mm  | 40 mm  | 8.00 mm    | 12.00 mm | 24       |
| 2589620000 | CD-BO 80X60 4/6 GY   | 80 mm  | 60 mm  | 4.00 mm    | 6.00 mm  | 24       |
| 2589840000 | CD-BO 80X60 8/12 GY  | 80 mm  | 60 mm  | 8.00 mm    | 12.00 mm | 24       |
| 2589550000 | CD-BO 80X80 4/6 GY   | 80 mm  | 80 mm  | 4.00 mm    | 6.00 mm  | 24       |
| 2589790000 | CD-BO 80X80 8/12 GY  | 80 mm  | 80 mm  | 8.00 mm    | 12.00 mm | 24       |
| 2589510000 | CD-BO 80X100 4/6 GY  | 80 mm  | 100 mm | 4.00 mm    | 6.00 mm  | 16       |
| 2589740000 | CD-BO 80X100 8/12 GY | 80 mm  | 100 mm | 8.00 mm    | 12.00 mm | 16       |



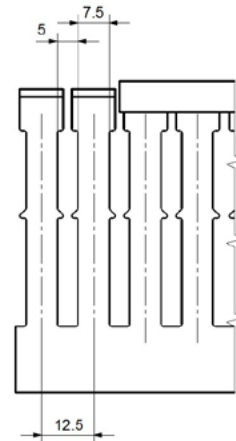
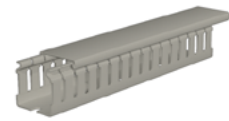
### DIN cable duct, slit width 5 / slit clearance 7.5

#### Technical data

| Material | Colour | Length  | Operating temperature | Fire class acc. to UL 94 |
|----------|--------|---------|-----------------------|--------------------------|
| PVC      | Grey   | 2000 mm | -5...60 °C            | V-0                      |

#### Ordering data

| Order No.  | Type                  | Height  | Width   | Slit width | Slit gap | Qty. [m] |
|------------|-----------------------|---------|---------|------------|----------|----------|
| 2589520000 | CD 25X25 5/7.5 GY     | 25 mm   | 25 mm   | 5.00 mm    | 7.50 mm  | 84       |
| 2589540000 | CD 37.5X25 5/7.5 GY   | 37.5 mm | 25 mm   | 5.00 mm    | 7.50 mm  | 64       |
| 2589590000 | CD 37.5X37.5 5/7.5 GY | 37.5 mm | 37.5 mm | 5.00 mm    | 7.50 mm  | 48       |
| 2589560000 | CD 50X25 5/7.5 GY     | 50 mm   | 25 mm   | 5.00 mm    | 7.50 mm  | 52       |
| 2589610000 | CD 50X37.5 5/7.5 GY   | 50 mm   | 37.5 mm | 5.00 mm    | 7.50 mm  | 32       |
| 2590120000 | CD 50X50 5/7.5 GY     | 50 mm   | 50 mm   | 5.00 mm    | 7.50 mm  | 24       |
| 2590170000 | CD 50X75 5/7.5 GY     | 50 mm   | 75 mm   | 5.00 mm    | 7.50 mm  | 24       |
| 2590140000 | CD 50X100 5/7.5 GY    | 50 mm   | 100 mm  | 5.00 mm    | 7.50 mm  | 16       |
| 2589580000 | CD 75X25 5/7.5 GY     | 75 mm   | 25 mm   | 5.00 mm    | 7.50 mm  | 32       |
| 2589630000 | CD 75X37.5 5/7.5 GY   | 75 mm   | 37.5 mm | 5.00 mm    | 7.50 mm  | 32       |
| 2590150000 | CD 75X50 5/7.5 GY     | 75 mm   | 50 mm   | 5.00 mm    | 7.50 mm  | 24       |
| 2590180000 | CD 75X75 5/7.5 GY     | 75 mm   | 75 mm   | 5.00 mm    | 7.50 mm  | 16       |
| 2590190000 | CD 75X100 5/7.5 GY    | 75 mm   | 100 mm  | 5.00 mm    | 7.50 mm  | 16       |
| 2590160000 | CD 75X125 5/7.5 GY    | 75 mm   | 125 mm  | 5.00 mm    | 7.50 mm  | 12       |



### Halogen-free cable duct, light grey, slit width 5 / slit clearance 7.5

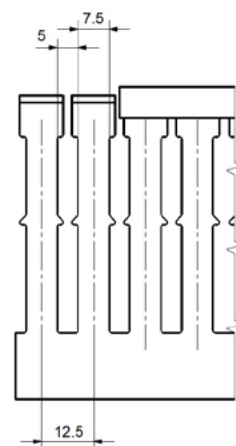
#### Technical data

| Material | Colour     | Length  | Operating temperature | Fire class acc. to UL 94 |
|----------|------------|---------|-----------------------|--------------------------|
| PC-ABS   | Light Grey | 2000 mm | -25...105 °C          | V-0                      |



#### Ordering data

| Order No.  | Type                       | Height  | Width   | Slit width | Slit gap | Qty. [m] |
|------------|----------------------------|---------|---------|------------|----------|----------|
| 2589650000 | CD-HF 25X25 5/7.5 LTGY     | 25 mm   | 25 mm   | 5.00 mm    | 7.50 mm  | 84       |
| 2589660000 | CD-HF 37.5X25 5/7.5 LTGY   | 37.5 mm | 25 mm   | 5.00 mm    | 7.50 mm  | 64       |
| 2589720000 | CD-HF 37.5X37.5 5/7.5 LTGY | 37.5 mm | 37.5 mm | 5.00 mm    | 7.50 mm  | 48       |
| 2589680000 | CD-HF 50X25 5/7.5 LTGY     | 50 mm   | 25 mm   | 5.00 mm    | 7.50 mm  | 52       |
| 2589730000 | CD-HF 50X37.5 5/7.5 LTGY   | 50 mm   | 37.5 mm | 5.00 mm    | 7.50 mm  | 32       |
| 2589770000 | CD-HF 50X50 5/7.5 LTGY     | 50 mm   | 50 mm   | 5.00 mm    | 7.50 mm  | 24       |
| 2589810000 | CD-HF 50X75 5/7.5 LTGY     | 50 mm   | 75 mm   | 5.00 mm    | 7.50 mm  | 24       |
| 2589860000 | CD-HF 50X100 5/7.5 LTGY    | 50 mm   | 100 mm  | 5.00 mm    | 7.50 mm  | 16       |
| 2589700000 | CD-HF 75X25 5/7.5 LTGY     | 75 mm   | 25 mm   | 5.00 mm    | 7.50 mm  | 32       |
| 2589750000 | CD-HF 75X37.5 5/7.5 LTGY   | 75 mm   | 37.5 mm | 5.00 mm    | 7.50 mm  | 32       |
| 2589780000 | CD-HF 75X50 5/7.5 LTGY     | 75 mm   | 50 mm   | 5.00 mm    | 7.50 mm  | 24       |
| 2589830000 | CD-HF 75X75 5/7.5 LTGY     | 75 mm   | 75 mm   | 5.00 mm    | 7.50 mm  | 16       |
| 2589880000 | CD-HF 75X100 5/7.5 LTGY    | 75 mm   | 100 mm  | 5.00 mm    | 7.50 mm  | 16       |
| 2589900000 | CD-HF 75X125 5/7.5 LTGY    | 75 mm   | 125 mm  | 5.00 mm    | 7.50 mm  | 12       |

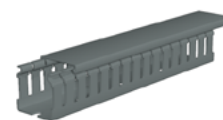


**Halogen-free cable duct, dark grey, slit width 5 / slit clearance 7.5**



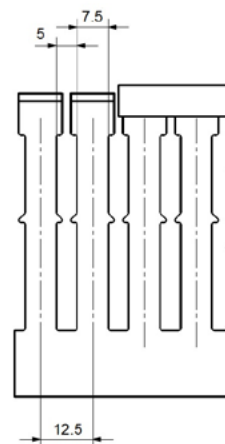
**Technical data**

| Material | Colour    | Length  | Operating temperature | Fire class acc. to UL 94 |
|----------|-----------|---------|-----------------------|--------------------------|
| PPE      | dark grey | 2000 mm | -25...120 °C          | V-0                      |



**Ordering data**

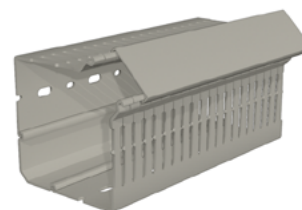
| Order No.  | Type                      | Height  | Width   | Slit width | Slit gap | Qty. [m] |
|------------|---------------------------|---------|---------|------------|----------|----------|
| 2589930000 | CD-HF 25X25 5/7.5 DKG     | 25 mm   | 25 mm   | 5.00 mm    | 7.50 mm  | 84       |
| 2589960000 | CD-HF 37.5X25 5/7.5 DKG   | 37.5 mm | 25 mm   | 5.00 mm    | 7.50 mm  | 64       |
| 2590040000 | CD-HF 37.5X37.5 5/7.5 DKG | 37.5 mm | 37.5 mm | 5.00 mm    | 7.50 mm  | 48       |
| 2589980000 | CD-HF 50X25 5/7.5 DKG     | 50 mm   | 25 mm   | 5.00 mm    | 7.50 mm  | 52       |
| 2590060000 | CD-HF 50X37.5 5/7.5 DKG   | 50 mm   | 37.5 mm | 5.00 mm    | 7.50 mm  | 32       |
| 2589410000 | CD-HF 50X50 5/7.5 DKG     | 50 mm   | 50 mm   | 5.00 mm    | 7.50 mm  | 24       |
| 2589360000 | CD-HF 50X75 5/7.5 DKG     | 50 mm   | 75 mm   | 5.00 mm    | 7.50 mm  | 24       |
| 2589320000 | CD-HF 50X100 5/7.5 DKG    | 50 mm   | 100 mm  | 5.00 mm    | 7.50 mm  | 16       |
| 2590010000 | CD-HF 75X25 5/7.5 DKG     | 75 mm   | 25 mm   | 5.00 mm    | 7.50 mm  | 32       |
| 2590090000 | CD-HF 75X37.5 5/7.5 DKG   | 75 mm   | 37.5 mm | 5.00 mm    | 7.50 mm  | 32       |
| 2589390000 | CD-HF 75X50 5/7.5 DKG     | 75 mm   | 50 mm   | 5.00 mm    | 7.50 mm  | 24       |
| 2589340000 | CD-HF 75X75 5/7.5 DKG     | 75 mm   | 75 mm   | 5.00 mm    | 7.50 mm  | 16       |
| 2589290000 | CD-HF 75X100 5/7.5 DKG    | 75 mm   | 100 mm  | 5.00 mm    | 7.50 mm  | 16       |
| 2589270000 | CD-HF 75X125 5/7.5 DKG    | 75 mm   | 125 mm  | 5.00 mm    | 7.50 mm  | 12       |



**Metric cable duct corner duct, slit width 4 / slit clearance 6**

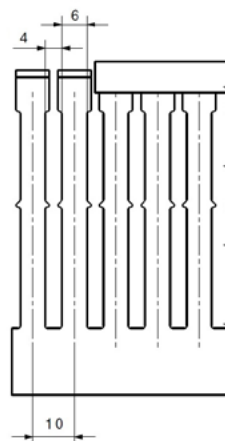
**Technical data**

| Material | Colour | Length  | Operating temperature | Fire class acc. to UL 94 |
|----------|--------|---------|-----------------------|--------------------------|
| PVC      | Grey   | 2000 mm | -5...60 °C            | V-0                      |



**Ordering data**

| Order No.  | Type                  | Height | Width  | Slit width | Slit gap | Qty. [m] |
|------------|-----------------------|--------|--------|------------|----------|----------|
| 2589480000 | CD-COD 90X90 4/6 GY   | 90 mm  | 90 mm  | 4.00 mm    | 6.00 mm  | 16       |
| 2589460000 | CD-COD 110X110 4/6 GY | 110 mm | 110 mm | 4.00 mm    | 6.00 mm  | 16       |



### Flexible cable duct

#### Technical data

| Material | Colour                     | Length | Operating temperature | Fire class acc. to UL 94 |
|----------|----------------------------|--------|-----------------------|--------------------------|
| PA       | grey (similar to RAL 7001) | 500 mm | -15...80 °C           | V-2                      |

#### Ordering data

| Order No.  | Type              | Height  | Width   | Slit width | Slit gap | Qty. |
|------------|-------------------|---------|---------|------------|----------|------|
| 2562770000 | CD-FLEX 12.5X12.5 | 12.5 mm | 12.5 mm | 5.00 mm    | 7.50 mm  | 50   |
| 2562780000 | CD-FLEX 20X20     | 20 mm   | 20 mm   | 5.00 mm    | 7.50 mm  | 50   |
| 2562790000 | CD-FLEX 30X30     | 30 mm   | 30 mm   | 5.00 mm    | 7.50 mm  | 50   |
| 2562800000 | CD-FLEX 40X40     | 40 mm   | 40 mm   | 5.00 mm    | 7.50 mm  | 50   |



### Accessories cable duct cover

#### Technical data

| Material | Length  | Operating temperature | Fire class acc. to UL 94 |
|----------|---------|-----------------------|--------------------------|
| PVC      | 2000 mm | -5...60 °C            | V-0                      |

#### Ordering data

| Order No.  | Type           | Width   | Colour | Qty. [m] |
|------------|----------------|---------|--------|----------|
| 2590130000 | CD-LID 15 GY   | 15 mm   | Grey   | 2        |
| 2590110000 | CD-LID 25 GY   | 25 mm   | Grey   | 2        |
| 2590100000 | CD-LID 37.5 GY | 37.5 mm | Grey   | 2        |
| 2590080000 | CD-LID 40 GY   | 40 mm   | Grey   | 2        |
| 2590070000 | CD-LID 50 GY   | 50 mm   | Grey   | 2        |
| 2590050000 | CD-LID 60 GY   | 60 mm   | Grey   | 2        |
| 2590030000 | CD-LID 75 GY   | 75 mm   | Grey   | 2        |
| 2590020000 | CD-LID 80 GY   | 80 mm   | Grey   | 2        |
| 2590000000 | CD-LID 100 GY  | 100 mm  | Grey   | 2        |
| 2589990000 | CD-LID 120 GY  | 120 mm  | Grey   | 2        |
| 2589970000 | CD-LID 125 GY  | 125 mm  | Grey   | 2        |
| 2589950000 | CD-LID 150 GY  | 150 mm  | Grey   | 2        |
| 2589940000 | CD-LID 200 GY  | 200 mm  | Grey   | 2        |



### Accessories halogen-free cable duct cover

#### Technical data

| Material | Length  | Operating temperature | Fire class acc. to UL 94 |
|----------|---------|-----------------------|--------------------------|
| PC-ABS   | 2000 mm | -25...105 °C          | V-0                      |

#### Ordering data

| Order No.  | Type             | Width   | Colour     | Qty. [m] |
|------------|------------------|---------|------------|----------|
| 2589220000 | CD-LID 37.5 LTGY | 37.5 mm | Light Grey | 2        |
| 2589200000 | CD-LID 50 LTGY   | 50 mm   | Light Grey | 2        |
| 2589170000 | CD-LID 75 LTGY   | 75 mm   | Light Grey | 2        |
| 2589140000 | CD-LID 100 LTGY  | 100 mm  | Light Grey | 2        |
| 2589120000 | CD-LID 125 LTGY  | 125 mm  | Light Grey | 2        |



## Accessories halogen-free cable duct cover



### Technical data

| Material | Length  | Operating temperature | Fire class acc. to UL 94 |
|----------|---------|-----------------------|--------------------------|
| PPE      | 2000 mm | -25...120 °C          | V-0                      |

### Ordering data

| Order No.  | Type            | Width   | Colour    | Qty. [m] |
|------------|-----------------|---------|-----------|----------|
| 2589090000 | CD-LID 25 DKG   | 25 mm   | dark grey | 2        |
| 2589070000 | CD-LID 37.5 DKG | 37.5 mm | dark grey | 2        |
| 2589050000 | CD-LID 50 DKG   | 50 mm   | dark grey | 2        |
| 2589020000 | CD-LID 75 DKG   | 75 mm   | dark grey | 2        |
| 2589000000 | CD-LID 100 DKG  | 100 mm  | dark grey | 2        |
| 2588980000 | CD-LID 125 DKG  | 125 mm  | dark grey | 2        |



## Cable duct accessories holders

### Technical data

| Material           | Operating temperature | Fire class acc. to UL 94 |
|--------------------|-----------------------|--------------------------|
| Polyamide 6 (PA 6) | -40...100 °C          | HB                       |

### Ordering data

| Order No.  | Type           | Product type             | Colour | Length | Qty. |
|------------|----------------|--------------------------|--------|--------|------|
| 2554100000 | CD-RETT 60     | Cable duct T-form binder | Yellow |        | 25   |
| 2554090000 | CD-RETT 40     | Cable duct T-form binder | Yellow |        | 40   |
| 2554080000 | CD-RETA        | Cable duct binder arm    | Yellow |        | 100  |
| 2554050000 | CD-RET 80      | Cable duct binder        | Yellow |        | 400  |
| 2554030000 | CD-RET 60      | Cable duct binder        | Yellow |        | 500  |
| 2554020000 | CD-RET 40      | Cable duct binder        | Yellow |        | 500  |
| 2554070000 | CD-RET 125     | Cable duct binder        | Yellow |        | 200  |
| 2554060000 | CD-RET 100/120 | Cable duct binder        | Yellow |        | 250  |



## Cable duct accessories separators

### Technical data

| Material | Operating temperature | Fire class acc. to UL 94 |
|----------|-----------------------|--------------------------|
| PVC      | -5...60 °C            | V-0                      |

### Ordering data

| Order No.  | Type       | Product type           | Colour | Length  | Qty. |
|------------|------------|------------------------|--------|---------|------|
| 2554000000 | CD-SCCV    | Cable duct screw cover | Grey   |         | 1000 |
| 2553980000 | CD-SE 80   | Cable duct separator   | Grey   | 1000 mm | 16   |
| 2553960000 | CD-SE 60   | Cable duct separator   | Grey   | 1000 mm | 25   |
| 2553950000 | CD-SE 40/2 | Cable duct separator   | Grey   | 1000 mm | 30   |
| 2553970000 | CD-SE 40   | Cable duct separator   | Grey   | 1000 mm | 30   |
| 2553990000 | CD-SE 100  | Cable duct separator   | Grey   | 1000 mm | 16   |



### Accessories rivets and Expanding-rivet tool

#### Technical data

| Material  | Height | Diameter | Weight |
|-----------|--------|----------|--------|
| Aluminium | 224 mm | 34 mm    | 142 g  |

#### Ordering data

| Order No.  | Type       | Product type         | Drill-hole diameter | Colour        | Qty. |
|------------|------------|----------------------|---------------------|---------------|------|
| 2562710000 | EXRV-T 6.5 | Expanding-rivet tool | 6.5 mm              | Silver, Black | 4    |
| 2562720000 | EXRV-T 4.5 | Expanding-rivet tool | 4.5 mm              | Silver, Green | 4    |

#### Accessories

| Order No.  | Type     | Product type    | Drill-hole diameter | Colour | Qty. |
|------------|----------|-----------------|---------------------|--------|------|
| 2562690000 | EXRV 6.5 | Expanding rivet | 6.5 mm              | Black  | 1000 |
| 2562700000 | EXRV 4.5 | Expanding rivet | 4.5 mm              | Green  | 1000 |



### Cable duct cutting device

#### Technical data

| Weight  | Width  | Height | Depth  |
|---------|--------|--------|--------|
| 15000 g | 280 mm | 285 mm | 290 mm |

#### Ordering data

| Order No.  | Type | Product type              | Cutting width max. | Qty. |
|------------|------|---------------------------|--------------------|------|
| 1137530000 | VKSW | Cable duct cutting device | 125 mm             | 1    |



### Accessories cable duct marker

#### Technical data

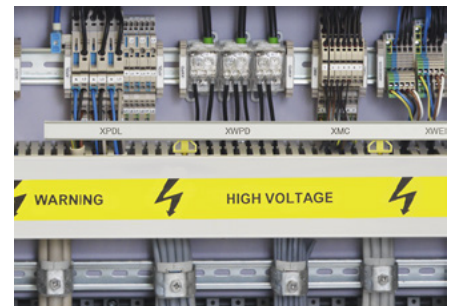
| Material | Operating temperature | Fire class acc. to UL 94 |
|----------|-----------------------|--------------------------|
| PVC      | -5...60 °C            | V-0                      |

#### Ordering data

| Order No.  | Type   | Product type               | Height | Colour       | Length  | Qty. |
|------------|--------|----------------------------|--------|--------------|---------|------|
| 2554120000 | CD-LBK | Cable duct tag rail kit    | 30 mm  | Yellow, Grey | 1000 mm | 20   |
| 2562850000 | CD-LBH | Cable duct tag rail holder | 30 mm  | Yellow       | 25 mm   | 150  |
| 2562680000 | CD-LB  | Cable duct tag rail        | 15 mm  | Grey         | 1000 mm | 150  |

#### Accessories

| Order No.  | Type            | Product type   | Height | Colour | Length   | Qty. |
|------------|-----------------|----------------|--------|--------|----------|------|
| 2006580000 | EL 12 MM GE 30M | Device markers | 12 mm  | Yellow | 30000 mm | 1    |
| 2006560000 | EL 12 MM SI 30M | Device markers | 12 mm  | Silver | 30000 mm | 1    |
| 2006570000 | EL 12 MM WS 30M | Device markers | 12 mm  | White  | 30000 mm | 1    |



## CC-RAIL 1000

### Technical data

| Material | Operating temperature | Fire class acc. to UL 94 | Version       |
|----------|-----------------------|--------------------------|---------------|
| PVC      | -20...80 °C           | V-0                      | Self-adhesive |

### Ordering data

| Order No.  | Type         | Product type | Width | Colour | Height  | Qty. |
|------------|--------------|--------------|-------|--------|---------|------|
| 1790150000 | CC-RAIL 1000 | Accessories  | 17 mm | Black  | 1000 mm | 1    |

### Accessories

| Order No.  | Type                    | Product type   | Width | Colour      | Height  | Qty. |
|------------|-------------------------|----------------|-------|-------------|---------|------|
| 1876570000 | CC 15/17 MC NE WS       | Device markers | 17 mm | White       | 15 mm   | 80   |
| 1876770000 | CC 15/27 MC NE WS       | Device markers | 27 mm | White       | 15 mm   | 80   |
| 1877260000 | CC 15/49 MC NE WS       | Device markers | 49 mm | White       | 15 mm   | 40   |
| 1877350000 | CC 15/60 MC NE WS       | Device markers | 60 mm | White       | 15 mm   | 40   |
| 1790160000 | CC-RAIL TRANSPARENT1000 | Cover          | 19 mm | Transparent | 1000 mm | 1    |



## SCHS 2

### Technical data

| Material | Operating temperature | Fire class acc. to UL 94 | Version       |
|----------|-----------------------|--------------------------|---------------|
| PVC      | -20...80 °C           | V-0                      | Self-adhesive |

### Ordering data

| Order No.  | Type    | Product type | Width | Colour | Height  | Qty. |
|------------|---------|--------------|-------|--------|---------|------|
| 1720600000 | SCHS2 K | Accessories  | 8 mm  | Black  | 1000 mm | 1    |

### Accessories

| Order No.  | Type                  | Product type    | Width | Colour | Height | Qty. |
|------------|-----------------------|-----------------|-------|--------|--------|------|
| 1755340000 | ESG 8/17 SYS PRO M WS | Device markers  | 8 mm  | White  | 17 mm  | 200  |
| 1609801044 | DEK 5/5 MC NE WS      | Terminal marker | 5 mm  | White  | 5 mm   | 1000 |
| 1640740000 | WS 8/5 MC NE WS       | Terminal marker | 5 mm  | White  | 8 mm   | 720  |



## SCHS 3 + SCHS 4

### Technical data

| Material | Operating temperature | Fire class acc. to UL 94 | Version       |
|----------|-----------------------|--------------------------|---------------|
| PVC      | -20...80 °C           | V-0                      | Self-adhesive |

### Ordering data

| Order No.  | Type    | Product type | Width | Colour | Height  | Qty. |
|------------|---------|--------------|-------|--------|---------|------|
| 1753480000 | SCHS3 K | Accessories  | 10 mm | Black  | 1000 mm | 1    |
| 1753460000 | SCHS4 K | Accessories  | 10 mm | Grey   | 1000 mm | 1    |

### Accessories

| Order No.  | Type                     | Product type   | Width | Colour | Height | Qty. |
|------------|--------------------------|----------------|-------|--------|--------|------|
| 1736181687 | ESG 7/20 SIRIUS MC NE GE | Device markers | 7 mm  | Yellow | 20 mm  | 200  |



**Protective cable hose coil**

**Technical data**

| Material     | Operating temperature |
|--------------|-----------------------|
| Polyethylene | -15...60 °C           |

**Ordering data**

| Order No.  | Type                | Nominal diameter | Bundle diameter | Colour          | Length    | Qty. [m] |
|------------|---------------------|------------------|-----------------|-----------------|-----------|----------|
| 2588590000 | CBC-SP 2-12/50 BK   | 1.5 mm           | 2...12 mm       | black, RAL 7021 | 400000 mm | 50       |
| 2588830000 | CBC-SP 2-12/50 TP   | 1.5 mm           | 2...12 mm       | Transparent     | 400000 mm | 50       |
| 2588570000 | CBC-SP 5-50/25 BK   | 4.2 mm           | 5...50 mm       | black, RAL 7021 | 200000 mm | 25       |
| 2588810000 | CBC-SP 5-50/25 TP   | 4.2 mm           | 5...50 mm       | Transparent     | 200000 mm | 25       |
| 2588550000 | CBC-SP 8-70/25 BK   | 6 mm             | 8...70 mm       | black, RAL 7021 | 100000 mm | 25       |
| 2588780000 | CBC-SP 8-70/25 TP   | 6 mm             | 8...70 mm       | Transparent     | 100000 mm | 25       |
| 2588520000 | CBC-SP 12-100/25 BK | 7.6 mm           | 12...100 mm     | black, RAL 7021 | 100000 mm | 25       |
| 2588760000 | CBC-SP 12-100/25 TP | 7.6 mm           | 12...100 mm     | Transparent     | 100000 mm | 25       |
| 2588500000 | CBC-SP 14-120/25 BK | 9.6 mm           | 14...120 mm     | black, RAL 7021 | 100000 mm | 25       |
| 2588740000 | CBC-SP 14-120/25 TP | 9.6 mm           | 14...120 mm     | Transparent     | 100000 mm | 25       |
| 2588710000 | CBC-SP 18-140/20 TP | 11.6 mm          | 18...140 mm     | Transparent     | 60000 mm  | 20       |



**Protective cable hose coil**

**Technical data**

| Material     | Operating temperature | Fire class acc. to UL 94 |
|--------------|-----------------------|--------------------------|
| Polyethylene | -15...60 °C           | V-2                      |

**Ordering data**

| Order No.  | Type                   | Nominal diameter | Bundle diameter | Colour | Length    | Qty. [m] |
|------------|------------------------|------------------|-----------------|--------|-----------|----------|
| 2588690000 | CBC-SP 2-12/50 V2 WT   | 1.5 mm           | 2...12 mm       | white  | 400000 mm | 50       |
| 2588670000 | CBC-SP 5-50/25 V2 WT   | 4.2 mm           | 5...50 mm       | white  | 200000 mm | 25       |
| 2588640000 | CBC-SP 12-100/25 V2 WT | 7.6 mm           | 12...100 mm     | white  | 100000 mm | 25       |
| 2588620000 | CBC-SP 14-120/25 V2 WT | 9.6 mm           | 14...120 mm     | white  | 100000 mm | 25       |

**Protective cable hose and tools**

**Technical data**

| Material      | Operating temperature | Fire class acc. to UL 94 |
|---------------|-----------------------|--------------------------|
| Polypropylene | -20...90 °C           | HB                       |

**Ordering data**

| Order No.  | Type         | Nominal diameter | Bundle diameter | Colour          | Length    | Qty. [m] |
|------------|--------------|------------------|-----------------|-----------------|-----------|----------|
| 2588490000 | CBC 8/100 BK | 8 mm             | 8 mm            | black, RAL 7021 | 100000 mm | 100      |
| 2588480000 | CBC 15/50 BK | 15 mm            | 15 mm           | black, RAL 7021 | 50000 mm  | 50       |
| 2588470000 | CBC 20/30 BK | 20 mm            | 20 mm           | black, RAL 7021 | 30000 mm  | 30       |
| 2589430000 | CBC 25/20 BK | 25 mm            | 25 mm           | black, RAL 7021 | 20000 mm  | 20       |



**Accessories**

| Order No.  | Type     | Product type               | Diameter | Colour | Qty. |
|------------|----------|----------------------------|----------|--------|------|
| 2553910000 | CBC-T 8  | Protective cable hose tool | 8        | Green  | 10   |
| 2553920000 | CBC-T 15 | Protective cable hose tool | 15       | Green  | 10   |
| 2553930000 | CBC-T 20 | Protective cable hose tool | 20       | Green  | 10   |
| 2553940000 | CBC-T 25 | Protective cable hose tool | 25       | Green  | 5    |





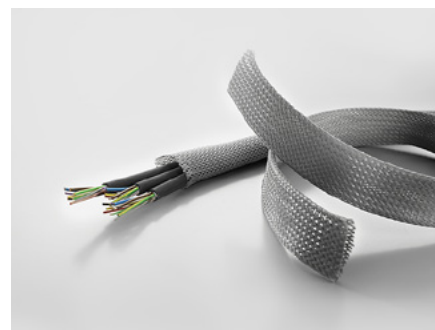
### Protective fabric-reinforced cable hose

#### Technical data

| Material                       | Operating temperature | Fire class acc. to UL 94 |
|--------------------------------|-----------------------|--------------------------|
| Polyethylene terephthalate PET | -50...150 °C          | HB                       |

#### Ordering data

| Order No.  | Type             | Nominal diameter | Bundle diameter | Colour      | Length    | Qty. [m] |
|------------|------------------|------------------|-----------------|-------------|-----------|----------|
| 2588950000 | CBC-FB 5-10/200  | 5 mm             | 5...10 mm       | Silver grey | 100000 mm | 200      |
| 2588930000 | CBC-FB 10-18/200 | 10 mm            | 10...18 mm      | Silver grey | 200000 mm | 200      |
| 2588900000 | CBC-FB 20-30/100 | 20 mm            | 20...30 mm      | Silver grey | 100000 mm | 100      |
| 2588880000 | CBC-FB 30-45/100 | 30 mm            | 30...45 mm      | Silver grey | 100000 mm | 100      |
| 2588860000 | CBC-FB 50-75/50  | 50 mm            | 50...75 mm      | Silver grey | 50000 mm  | 50       |

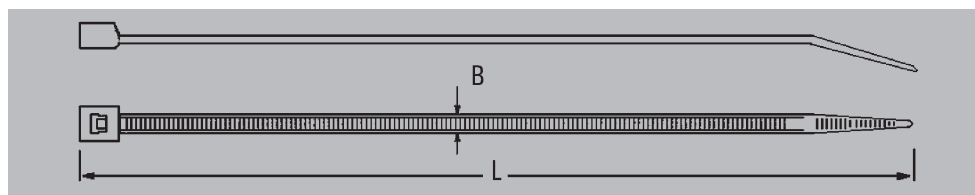


### Releasable cable ties



#### Ordering data

| Type         | Dimensions (LxW) mm | Min. (mm) bundle-Ø | Max. (mm) bundle-Ø | Min. Tensile strength in N | Qty. | natural Order No. | black Order No. |
|--------------|---------------------|--------------------|--------------------|----------------------------|------|-------------------|-----------------|
| CB-R 200/7.5 | 200 x 7.5           | 6                  | 50                 | 220                        | 100  | 1059200000        | 1059210000      |
| CB-R 250/7.5 | 250 x 7.5           | 6                  | 65                 | 220                        | 100  | 1059220000        | 1059230000      |
| CB-R 350/7.5 | 350 x 7.5           | 6                  | 100                | 220                        | 100  | 1059240000        | 1059250000      |



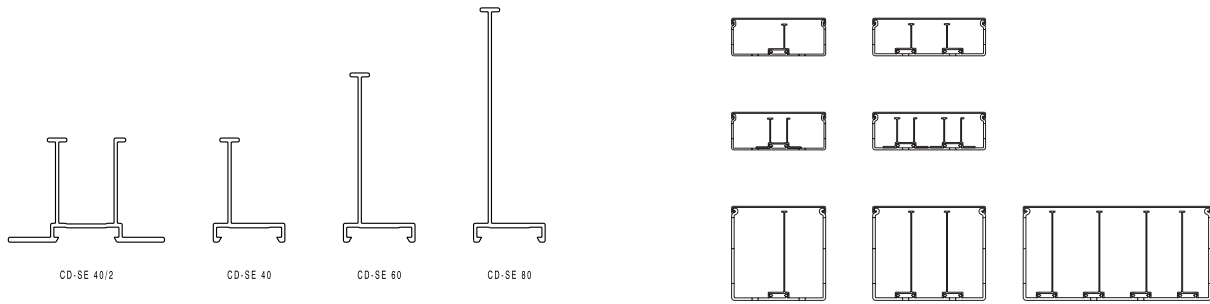
#### Accessories - holders

|             |   |
|-------------|---|
| CBH 8.1/6.2 | Cable tie retainer for use on mounting plate<br>Max. plate thickness 3.2 mm, hole Ø max. 6.2 mm |
| CBH 19/19   | Cable tie retainer for sticking on, surface: 19 x 19 mm   |
| CBH 27/27   | Cable tie retainer for sticking on, surface: 27 x 27 mm   |
| CBDM        | Cable tie direct mounting for cable harness max. Ø 50 mm, total length: 200 mm                  |
| CBFP        | Cable tie retainer for wall mounting for cable ties with a width of max. 9 mm                   |

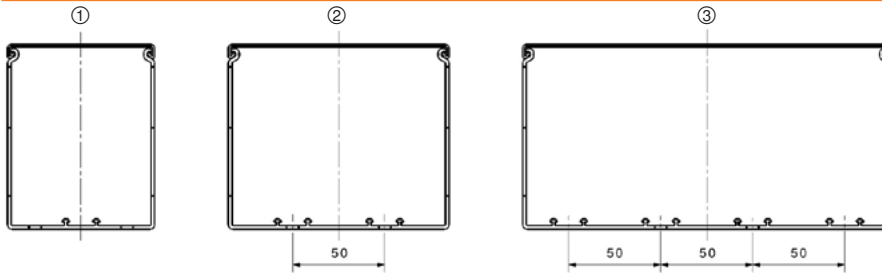
#### Ordering data

| Type         | Dimensions (LxW) mm | Min. (mm) bundle-Ø | Max. (mm) bundle-Ø | Min. Tensile strength in N | Qty. | natural Order No. | black Order No. |
|--------------|---------------------|--------------------|--------------------|----------------------------|------|-------------------|-----------------|
| CBH 8.1/6.2  | 8.1 x 6.2           |                    |                    |                            | 100  | 1279200000        |                 |
| CBH 19/19    | 19 x 19             |                    |                    |                            | 100  | 1289200000        | 1697950000      |
| CBH 27/27    | 27 x 27             |                    |                    |                            | 100  | 1289400000        | 1697960000      |
| CBDM 200/4.5 | 200 x 4.5           | 50                 | 220                |                            | 100  | 1279300000        |                 |
| CBFP 43.5/10 | 43.5 x 10           |                    |                    |                            | 100  |                   | 1859410000      |

**Cable duct separator**

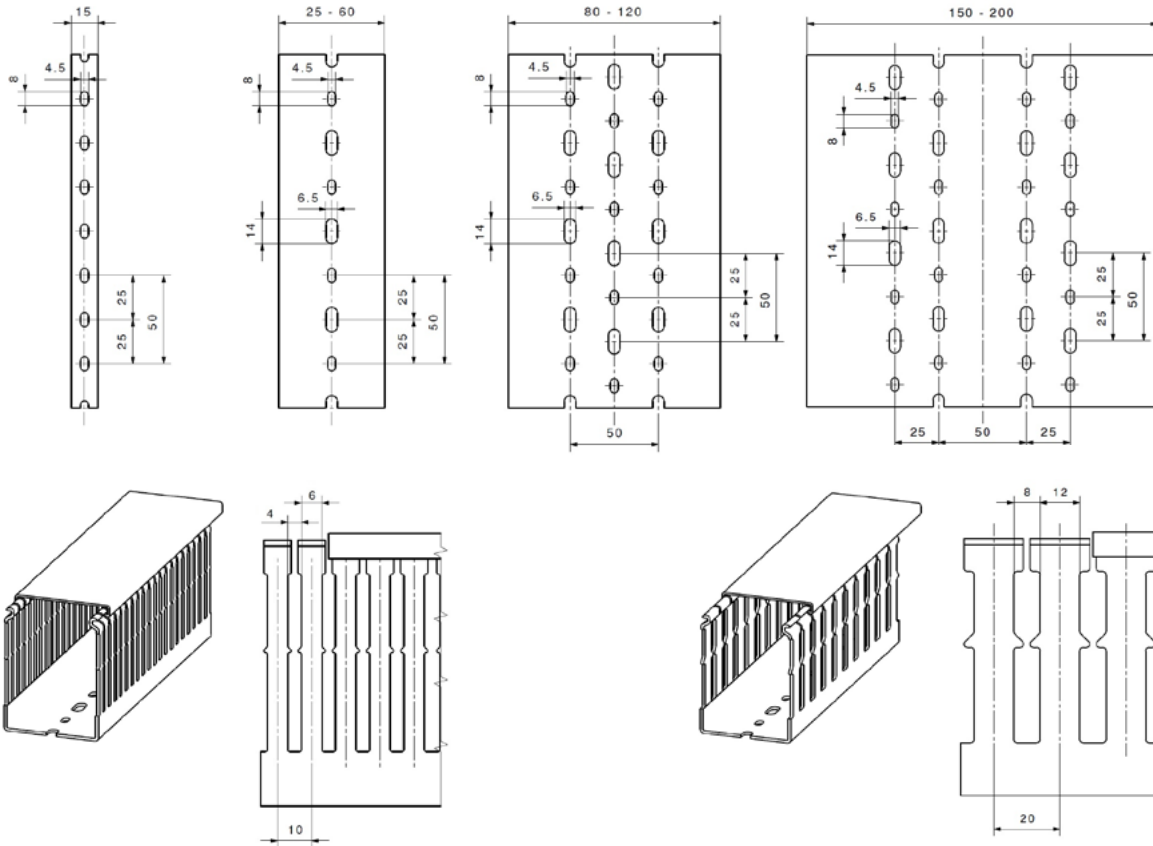


**Bottom rails, cable ducts metric, slit width 8 / distance of slots 12, slit width 4/ distance of slots 6**

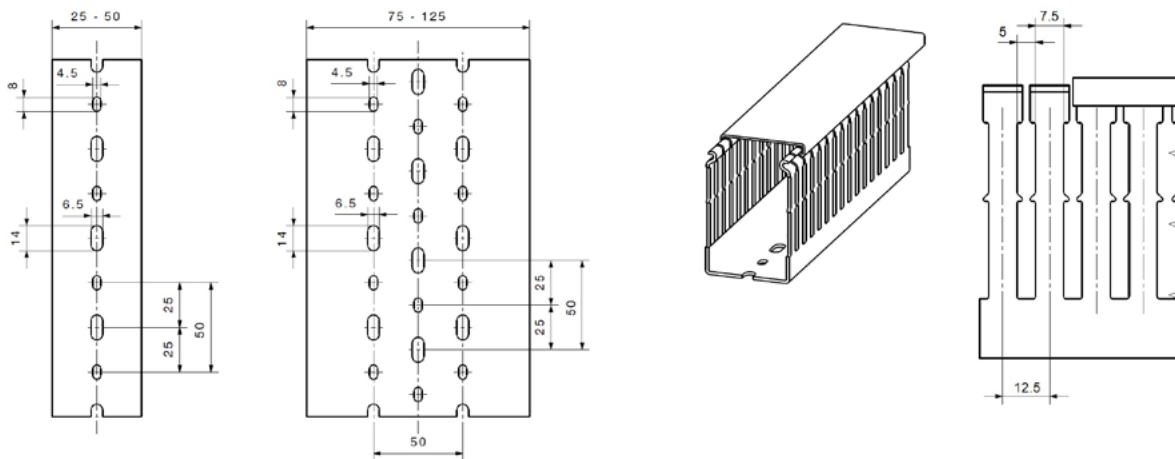


| Order No.  | Typ                   | Height | Width | Number of bottom rails | Figure |
|------------|-----------------------|--------|-------|------------------------|--------|
| 2589890000 | CD-BO 40X60 8/12 GY   | 40     | 60    | 1                      | 1      |
| 2589820000 | CD-BO 40X80 8/12 GY   | 40     | 80    | 1                      | 1      |
| 2589920000 | CD-BO 60X40 8/12 GY   | 60     | 40    | 1                      | 1      |
| 2589850000 | CD-BO 60X60 8/12 GY   | 60     | 60    | 1                      | 1      |
| 2589800000 | CD-BO 60X80 8/12 GY   | 60     | 80    | 1                      | 1      |
| 2589760000 | CD-BO 60X100 8/12 GY  | 60     | 100   | 1                      | 1      |
| 2589910000 | CD-BO 80X40 8/12 GY   | 80     | 40    | 1                      | 1      |
| 2589840000 | CD-BO 80X60 8/12 GY   | 80     | 60    | 1                      | 1      |
| 2589790000 | CD-BO 80X80 8/12 GY   | 80     | 80    | 1                      | 1      |
| 2589740000 | CD-BO 80X100 8/12 GY  | 80     | 100   | 1                      | 1      |
| 2588800000 | CD-BO 40X100 8/12 GY  | 40     | 100   | 1                      | 1      |
| 2588890000 | CD-BO 40X120 8/12 GY  | 40     | 120   | 2                      | 2      |
| 2588910000 | CD-BO 60X120 8/12 GY  | 60     | 120   | 2                      | 2      |
| 2588960000 | CD-BO 60X150 8/12 GY  | 60     | 150   | 2                      | 2      |
| 2589010000 | CD-BO 60X200 8/12 GY  | 60     | 200   | 4                      | 3      |
| 2588920000 | CD-BO 80X120 8/12 GY  | 80     | 120   | 2                      | 2      |
| 2588970000 | CD-BO 80X150 8/12 GY  | 80     | 150   | 2                      | 2      |
| 2589030000 | CD-BO 80X200 8/12 GY  | 80     | 200   | 4                      | 3      |
| 2588790000 | CD-BO 100X80 8/12 GY  | 100    | 80    | 1                      | 1      |
| 2588850000 | CD-BO 100X100 8/12 GY | 100    | 100   | 1                      | 1      |
| 2588940000 | CD-BO 100X120 8/12 GY | 100    | 120   | 2                      | 2      |
| 2588990000 | CD-BO 100X150 8/12 GY | 100    | 150   | 2                      | 2      |
| 2589040000 | CD-BO 100X200 8/12 GY | 100    | 200   | 4                      | 3      |
| 2589670000 | CD-BO 40X60 4/6 GY    | 40     | 60    | 1                      | 1      |
| 2589600000 | CD-BO 40X80 4/6 GY    | 40     | 80    | 1                      | 1      |
| 2589710000 | CD-BO 60X40 4/6 GY    | 60     | 40    | 1                      | 1      |
| 2589640000 | CD-BO 60X60 4/6 GY    | 60     | 60    | 1                      | 1      |
| 2589570000 | CD-BO 60X80 4/6 GY    | 60     | 80    | 1                      | 1      |
| 2589530000 | CD-BO 60X100 4/6 GY   | 60     | 100   | 1                      | 1      |
| 2589470000 | CD-BO 60X120 4/6 GY   | 60     | 120   | 2                      | 2      |
| 2589690000 | CD-BO 80X40 4/6 GY    | 80     | 40    | 1                      | 1      |
| 2589620000 | CD-BO 80X60 4/6 GY    | 80     | 60    | 1                      | 1      |
| 2589550000 | CD-BO 80X80 4/6 GY    | 80     | 80    | 1                      | 1      |
| 2589510000 | CD-BO 80X100 4/6 GY   | 80     | 100   | 1                      | 1      |
| 2589490000 | CD-BO 80X120 4/6 GY   | 80     | 120   | 2                      | 2      |
| 2589400000 | CD-BO 100X80 4/6 GY   | 100    | 80    | 1                      | 1      |
| 2589450000 | CD-BO 100X100 4/6 GY  | 100    | 100   | 1                      | 1      |
| 2589500000 | CD-BO 100X120 4/6 GY  | 100    | 120   | 2                      | 2      |

**Sizes of holes on the bottom, cable ducts metric, slit width 8 / distance of slots 12, slit width 4/ distance of slots 6**



**Size of holes on the bottom, cable ducts metric, slit width 5 / distance of slots 7.5**



## Weidmüller – Your Partner in Industrial Connectivity

As experienced experts, we support our customers and partners around the world with products, solutions and services in the industrial environment of power, signal and data. We are at home in their industries and markets and know the technological challenges of tomorrow. We are therefore continuously developing innovative, sustainable and useful solutions for their individual needs. Together we set standards in industrial connectivity.

Weidmüller Interface GmbH & Co. KG  
Klingenbergstraße 16  
32758 Detmold, Germany  
T +49 5231 14-0  
F +49 5231 14-292083  
[www.weidmueller.com](http://www.weidmueller.com)

Personal support can  
be found on our website:  
[www.weidmueller.com/contact](http://www.weidmueller.com/contact)

Made in Germany



Order number: 2599080000/05/2018/SMB