



Customizable,
High-Quality, Heavy Duty,
Industrial-Grade Actuators

INDUSTRIAL MOTION



TiMOTION ELECTRONIC LINEAR ACTUATORS – MOTION TECHNOLOGY THAT HELPS PROVIDE A CLEANER, BETTER FUTURE

Many industrial applications require heavy-duty automation on a large scale — especially for agricultural, construction, mining, ventilation, and process control machinery, among others. The technology is out there, and it's only getting better. Equipment manufacturers are increasingly turning to electric linear actuators as a cost-efficient and reliable alternative to previous industry standards, such as hydraulic and pneumatic motion systems. TiMOTION's Industrial Motion product line is shown within this catalog, as well as additional information about what we offer and the full benefits of our linear actuator technology.

JP series

TiMOTION's JP series family is designed with an inline actuator appearance. All the products in the JP series are ideally suited for high or low load required industrial applications where up to IP69K dust and liquid ingress protection is necessary. The JP series is made for use in limited spaces without sacrificing power.



JP3 - Page 14

Max. load

2,000N (push/pull)

Max. speed at max. load

3.5mm/s

Max. speed at no load

23.5mm/s

Retracted length

≥ Stroke + 217mm

IP rating

IP69K



JP4 - Page 16

Max. load

4,500N (push); 3,000N (pull)

Max. speed at max. load

2.5mm/s

Max. speed at no load

27.5mm/s

Retracted length

≥ Stroke + 289mm

IP rating

IP69K

MA series

TiMOTION's MA series family is specifically designed for harsh working environments, requiring a durable, long-life solution. All of our MA series actuators are ideal for the heavy-duty machinery, industrial equipment and off-road vehicles. Also, they all comply with IP69K protection that will withstand high-pressure water jets, and the ingress of dust and other solid contaminants.



MA1 - Page 18

Max. load

ACME screw: 2,500N (push/pull)
Ball screw: 4,500N (push/pull)

Max. speed at max. load

14.3mm/s (ACME screw, DC motor)
14mm/s (Ball screw, DC motor)

Max. speed at no load

58.5mm/s
(Ball screw, DC motor)

Retracted length

\geq Stroke + 160mm
(ACME screw, without POT)
 \geq Stroke + 201mm
(Ball screw, without POT)

IP rating

IP69K



MA2 - Page 20

Max. load

6,000N (push/pull)

Max. speed at max. load

6.1 mm/s

Max. speed at no load

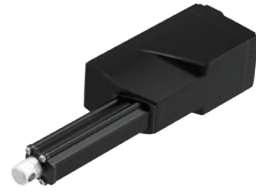
52.5mm/s

Retracted length

\geq Stroke + 131mm

IP rating

IP69K



MA5 - Page 22

Max. load

3,500N (push); 2,000N (pull)

Max. speed at max. load

2.4mm/s

Max. speed at no load

56.5mm/s

Retracted length

\geq 200mm (depending on
chosen fixation type)

IP rating

IP69K

TA series

TiMOTION's TA series family is a well-developed product line for the industrial market segment. All the products in the TA series have a compact design, and can meet the demands of high-force, high-speed, and low noise requirements. The TA series is recommended for use in small spaces where force or capability cannot be sacrificed.



TA2 - Page 24

Max. load

1,000N (push/pull)

Max. speed at max. load

7.6mm/s

Max. speed at no load

67.5mm/s

Retracted length

≥ Stroke + 105mm
(without output signals)

IP rating

IP66D



TA2P - Page 26

Max. load

3,500N (push); 2,000N (pull)

Max. speed at max. load

2.4mm/s

Max. speed at no load

56.5mm/s

Retracted length

≥ Stroke + 108mm
(with Hall sensors or
without output signals)

IP rating

IP66D



TA16 - Page 28

Max. load

3,500N (push/pull)

Max. speed at max. load

6.2mm/s

Max. speed at no load

23.5mm/s

Retracted length

≥ Stroke + 112mm

IP rating

IP66



TA21 - Page 30

- Max. load**
10,000N (push); 6,000N (pull)
- Max. speed at max. load**
6.3mm/s
- Max. speed at no load**
24.7mm/s
- Retracted length**
≥ 67mm



TA38 - Page 32

- Max. load**
1,500N (push/pull)
- Max. speed at max. load**
7.9mm/s
- Max. speed at no load**
12.5mm/s
- Retracted length**
≥ 160mm
- IP rating**
IP66

VN series



VN1 - Page 34

NEW

Max. load

3,500N (push/pull)

Max. speed at max. load

4.2mm/s

Max. speed at no load

10.4mm/s

Retracted length

≥ 217mm (DC version)

≥ 437mm (AC version)

*depending on chosen fixation type

IP rating

IP66

TiMOTION's VN series is designed especially for automated ventilation systems. Whether trying to improve the indoor air quality in the building through lower peak summer temperatures or enhancing the interior climate in livestock houses, our VN series can meet the growing demand for ventilation applications. All the actuator in our VN series have metallic appearance with an IP66 rating.



TL series

TiMOTION's TL (lifting column) series is made up of two or three extruded aluminum tubes of rectangular shape that give the system great stability and a high stroke with reduced retracted length. Our electric lifting columns are perfect for industrial applications such as height-adjustable workstations, screens and lifting tables.



TL3 - Page 36

Max. load & self-locking force

4,000N (push)

Max. dynamic bending moment

1,000Nm

Max. speed at max. load

13.7mm/s

Max. speed at no load

39mm/s

Retracted length

$\geq \text{Stroke}/2 + 150\text{mm}$

IP rating

IPX6



TL17 - Page 38

Max. load

2,000N (push)

Max. dynamic bending moment

250Nm

Max. speed at max. load

11.5mm/s

Max. speed at no load

41mm/s

Retracted length

$\geq \text{Stroke}/2 + 150\text{mm}$

IP rating

IPX6



TL18 - Page 40

Max. load & self-locking force

4,500N (push)

Max. dynamic bending moment

250Nm

Max. speed at max. load

6.6mm/s

Max. speed at no load

45mm/s

Retracted length

≥ Stroke + 147mm

IP rating

IPX4



TL18AC - Page 42

Max. load & self-locking force

4,500N (push)

Max. dynamic bending moment

250Nm

Max. speed at max. load

6.6mm/s

Max. speed at no load

45mm/s

Retracted length

≥ Stroke + 183mm

TGM

series

TiMOTION's TGM (Gear Motor) series is primarily designed for height-adjustable table applications. The TGM products allow for fast, smooth and quiet adjustments of built-in spindles through the use of external limit switches. Shafting allows for the mechanical synchronization of dual spindles.



TGM1 - Page 44

Max. rated torque
7.4Nm

Max. speed at max. load
72RPM ($\pm 5\%$)

Max. speed at no load
262.5RPM ($\pm 5\%$)

Options
Hall sensors



TGM2 - Page 46

Max. rated torque
18.3Nm

Max. speed at max. load
51RPM ($\pm 5\%$)

Max. speed at no load
108RPM ($\pm 5\%$)

Options
Hall sensors



TGM3 - Page 48

Max. rated torque
4.6Nm

Max. speed at max. load
61RPM ($\pm 5\%$)

Max. speed at no load
259RPM ($\pm 5\%$)

Options
Hall sensors



TGM4 - Page 50

Max. rated torque
6Nm

Max. speed at max. load
98RPM ($\pm 5\%$)

Max. speed at no load
219RPM ($\pm 5\%$)

Options
Hall sensors



TGM7 - Page 52

Max. rated torque
7.2Nm

Max. speed at max. load
78RPM ($\pm 5\%$)

Max. speed at no load
355RPM ($\pm 5\%$)

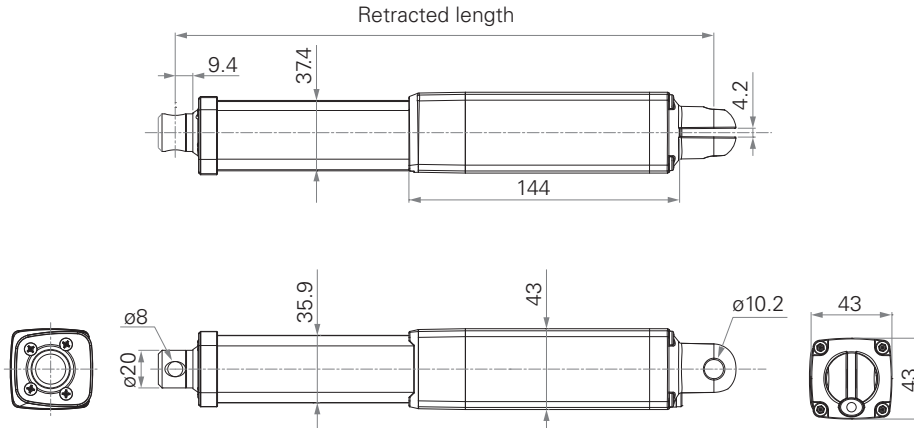
Options
Hall sensors

JP3

series



Standard Dimension (mm)

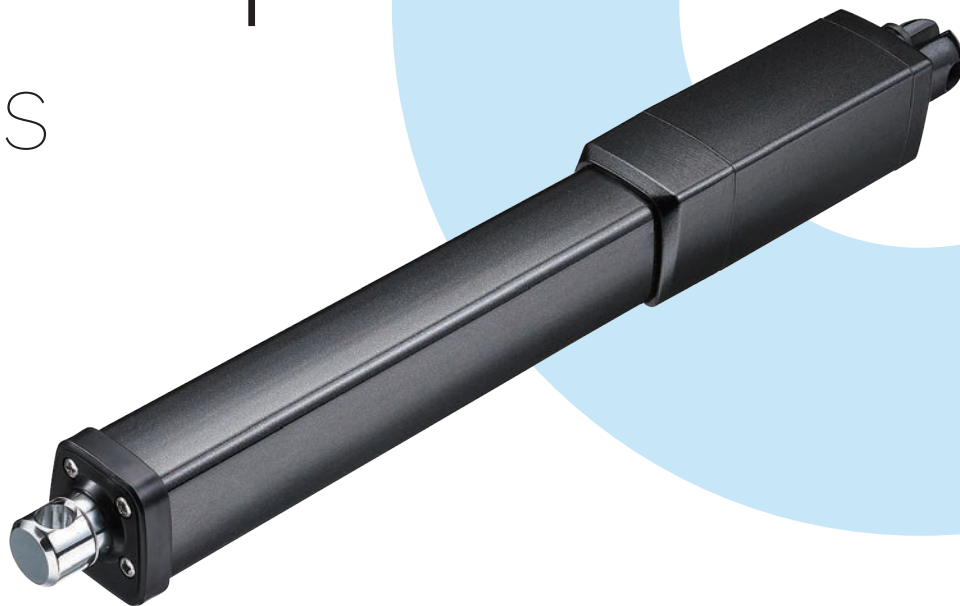


General Features

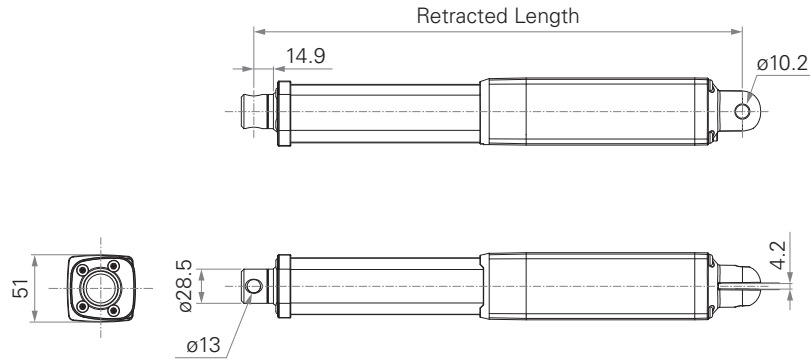
Max. load	2,000N (push/pull)	Voltage	12/24V DC or 12/24V DC (PTC)
Max. speed at max. load	3.5mm/s	Color	Black or grey
Max. speed at no load	23.5mm/s	Operational temperature range	-5°C~+65°C
Retracted length	≥ Stroke + 217mm	Operational temperature range at full performance	+5°C~+45°C
IP rating	IP69K	Storage temperature range	-40°C~+70°C
Certificate	UL73		
Stroke	20~1000mm		An inline actuator designed for small spaces

JP4

series



Standard Dimension (mm)

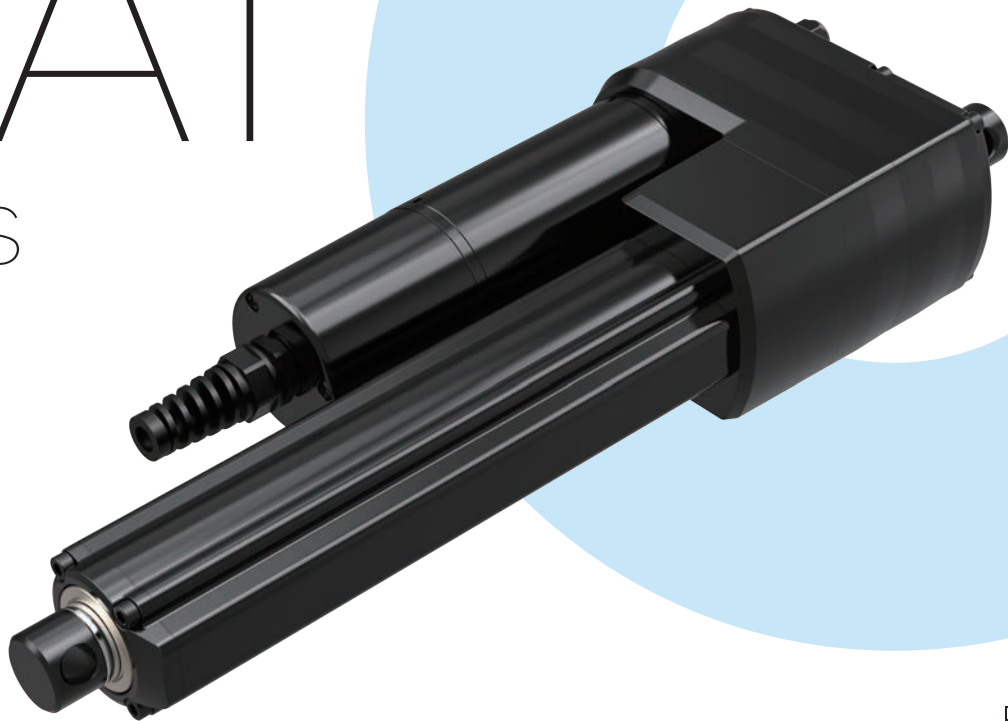


General Features

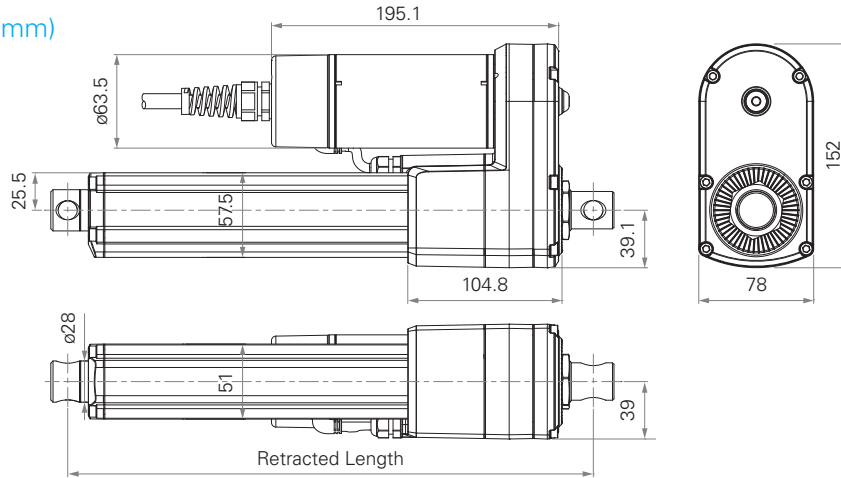
Max. load	4,500N (push); 3,000N (pull)	Voltage	12/24V DC or 12/24V DC (PTC)
Max. speed at max. load	2.5mm/s	Color	Black or grey
Max. speed at no load	27.5mm/s	Operational temperature range	-5°C~+65°C
Retracted length	≥ Stroke + 289mm	Operational temperature range at full performance	+5°C~+45°C
IP rating	IP69K	Storage temperature range	-40°C~+70°C
Certificate	UL73		An inline actuator designed for small spaces
Stroke	20~1000mm		

MA1

series



Standard Dimension (mm)



General Features

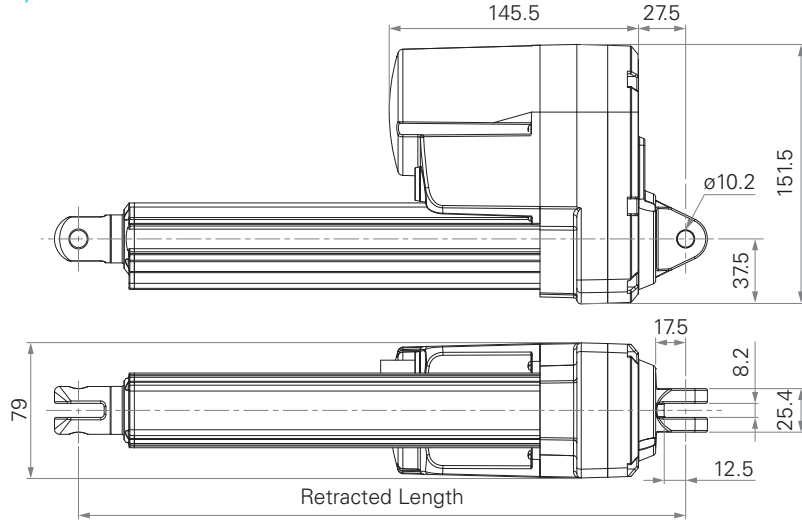
Max. load	ACME screw: 2,500N (push/pull) Ball screw: 4,500N (push/pull)	Options	Overload clutch, electromagnetic brake, Hall sensors, POT, manual crank function
Max. speed at max. load	14.3mm/s (ACME screw, DC motor) 14mm/s (Ball screw, DC motor)	Voltage	12/24/36V DC or 110/220V AC
Max. speed at no load	58.5mm/s (Ball screw, DC motor)	Spindle	ACME or Ball screw
Retracted length	≥ Stroke + 160mm (ACME screw, without POT) ≥ Stroke + 201mm (Ball screw, without POT)	Color	Black
IP rating	IP69K	Operational temperature range	-30°C~+65°C
Certificate	UL73, EMC	Operational temperature range at full performance	+5°C~+45°C
Stroke	20~1000mm (ACME screw); 50~800mm (Ball screw)		Mechanical or electromagnetic brake Higher duty cycle (25%), corrosion proof

MA2

series



Standard Dimension (mm)

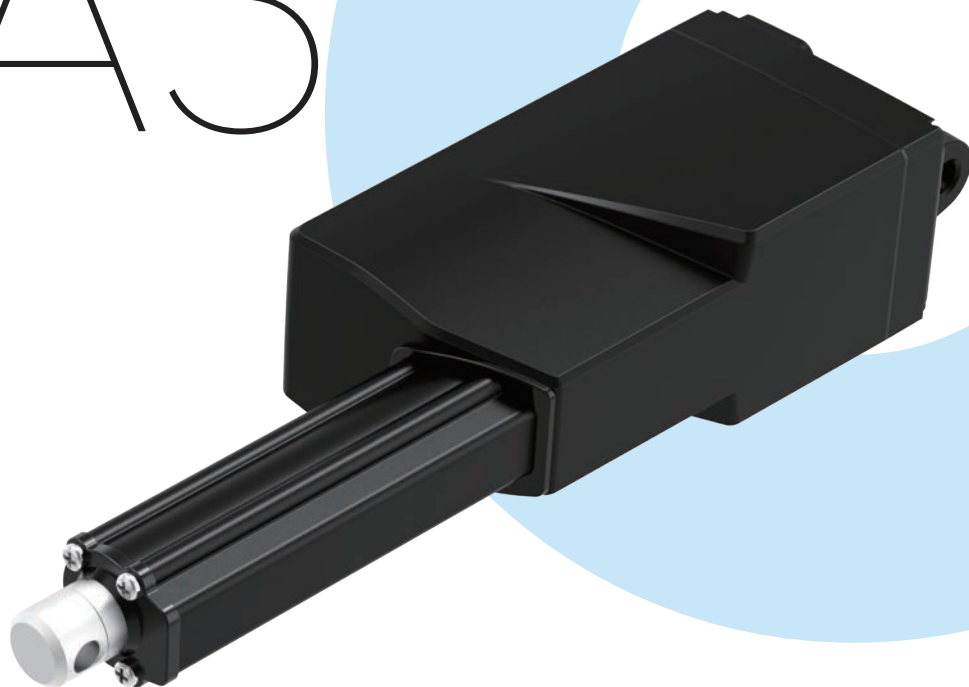


General Features

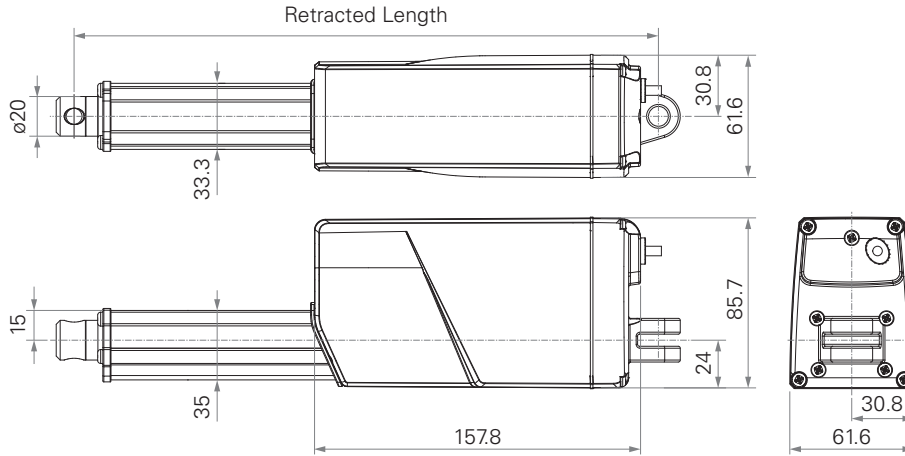
Max. load	6,000N (push/pull)	Options	Hall sensors, POT, manual drive, Reed sensor on the outer tube
Max. speed at max. load	6.1mm/s	Voltage	12/24/36V DC; 12/24/36V DC (thermal control)
Max. speed at no load	52.5mm/s	Operational temperature range	-30°C~+65°C
Retracted length	≥ Stroke + 131mm	Operational temperature range at full performance	+5°C~+45°C
IP rating	IP69K		
Certificate	UL73, EMC		
Stroke	25~1000mm		

MA5

series



Standard Dimension (mm)

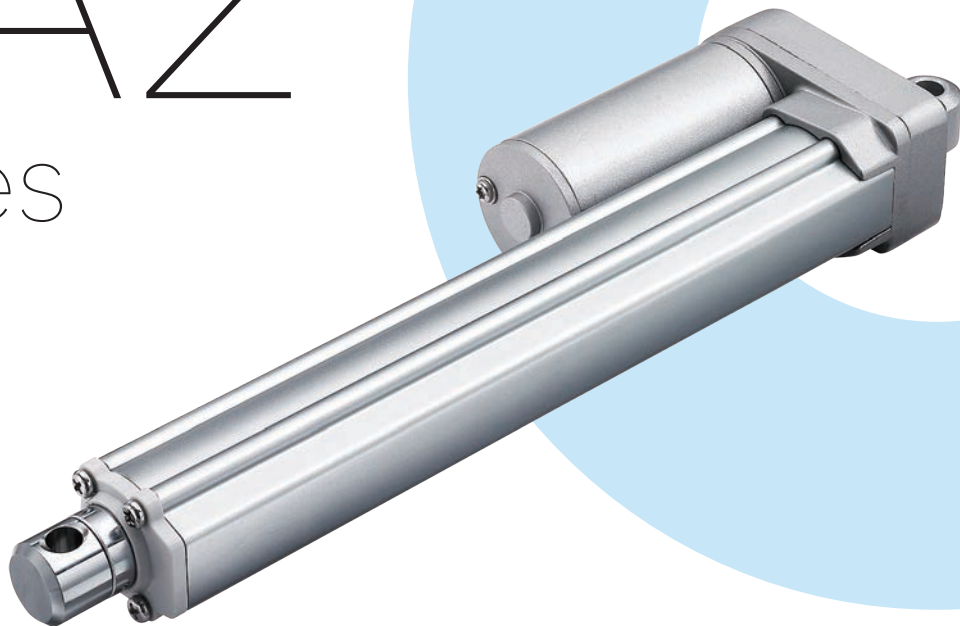


General Features

Max. load	3,500N (push); 2,000N (pull)	Stroke	20~1000mm
Max. speed at max. load	2.4mm/s	Options	Hall sensors, POT, grease chamber
Max. speed at no load	56.5mm/s	Operational temperature range	-25°C~+65°C
Retracted length	≥ 200mm (upon the front attachment)	Operational temperature range at full performance	+5°C~+45°C
IP rating	IP69K		

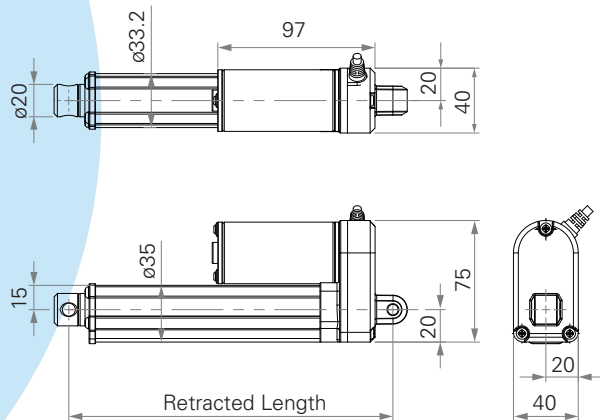
TA2

series

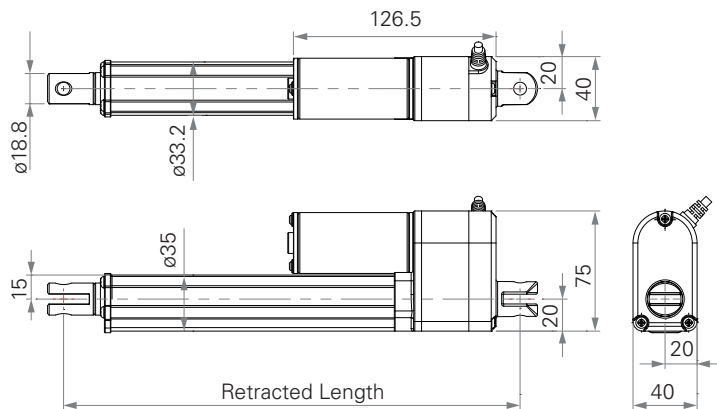


Standard Dimension (mm)

Without Output Signal



Output Signal #1, 2, 3, 4, 5



General Features

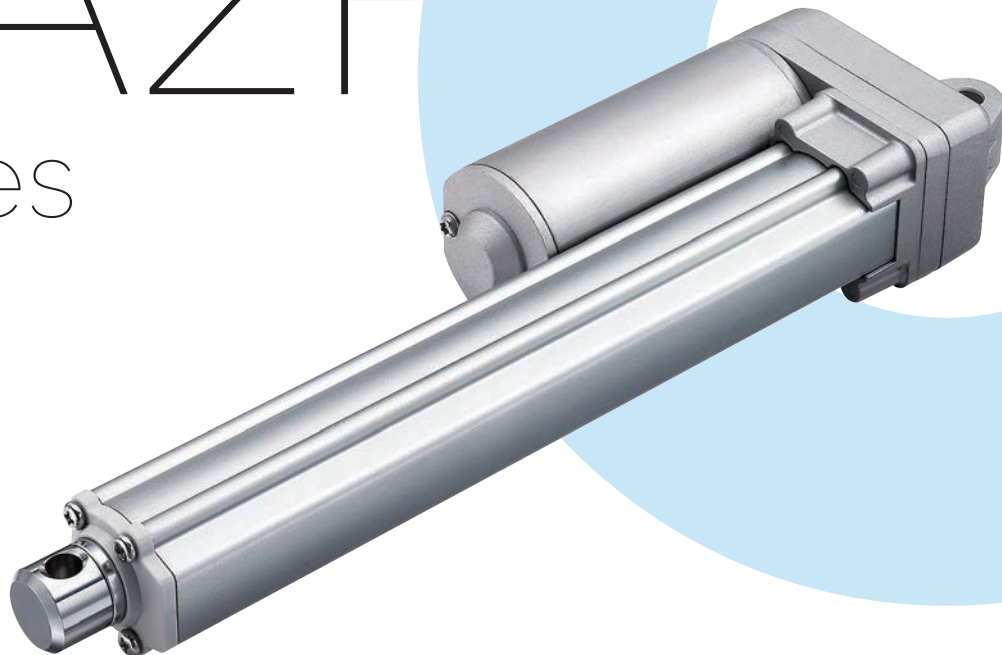
Max. load	1,000N (push/pull)
Max. speed at max. load	7.6mm/s
Max. speed at no load	67.5mm/s
Retracted length	≥ Stroke + 105mm (without output signals)
IP rating	IP66D
Certificate	IEC60601-1, ES60601-1, EMC
Stroke	20~1000mm

Options	POT, Reed, Hall sensors
Voltage	12/24/36/48V DC; 12/24/36/48V DC (PTC)
Color	Silver
Operational temperature range	+5°C~+45°C (Load < 500N); -25°C~+65°C (Load ≥ 500N)
Operational temperature range at full performance	+5°C~+45°C

Compact size for limited space

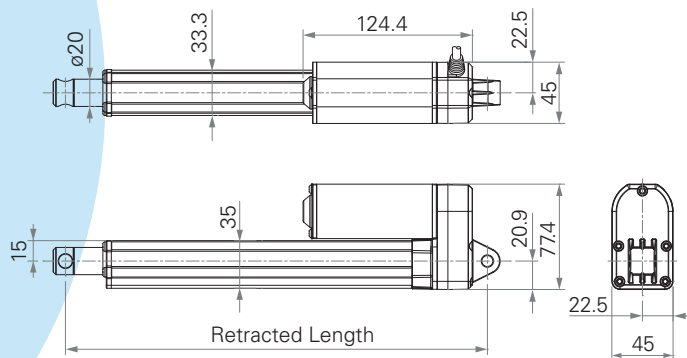
TA2P

series

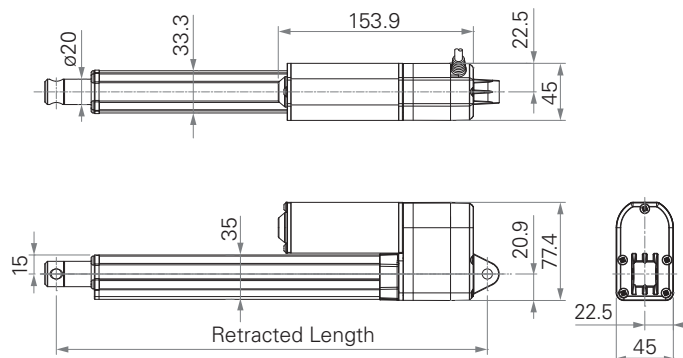


Standard Dimension (mm)

Without Output Signal



Output Signal #1, 2, 3, 4, 5



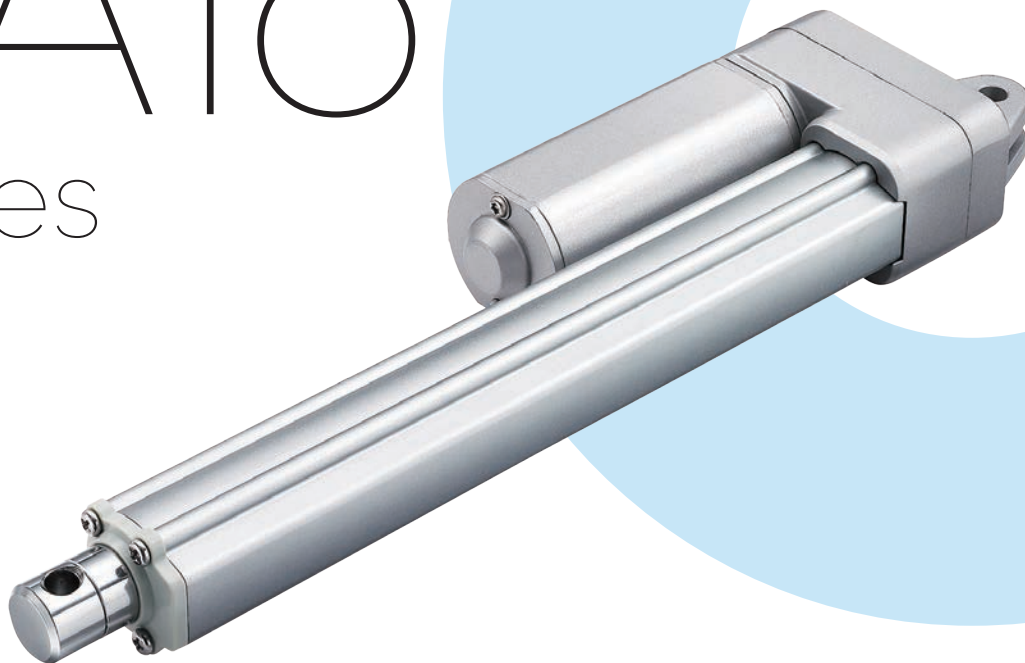
General Features

Max. load	3,500N (push); 2,000N (pull)
Max. speed at max. load	2.4mm/s
Max. speed at no load	56.5mm/s
Retracted length	≥ Stroke + 108mm (with Hall sensors or without output signals)
IP rating	IP66D
Certificate	IEC60601-1, ES60601-1, EN61000-6-1, EN61000-6-3, UL73

Stroke	20~1000mm
Options	POT, Reed or Hall sensors
Voltage	12/24/36V DC, 12/24V DC (PTC)
Color	Silver
Operational temperature range	-25°C~+65°C
Operational temperature range at full performance	+5°C~+45°C

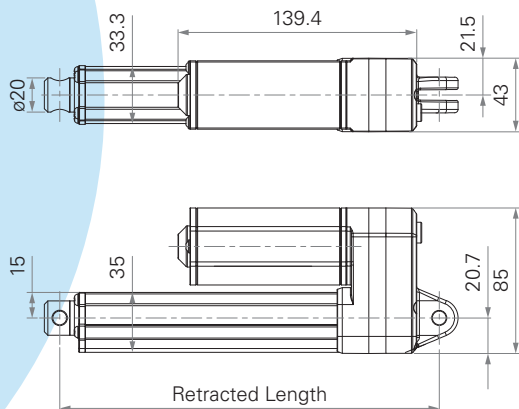
TA16

series

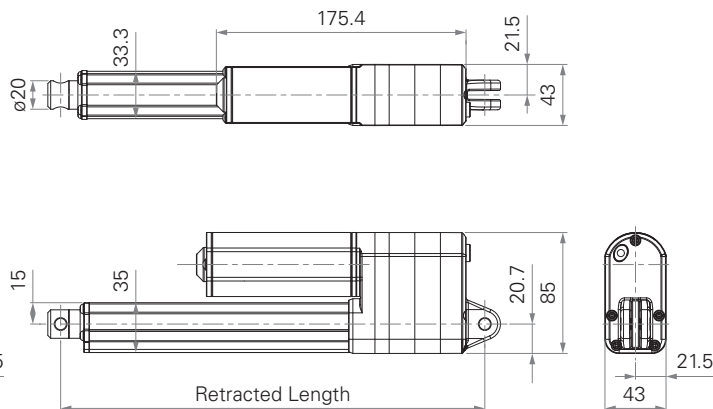


Standard Dimension (mm)

Dimensions without Output Signal or with Hall Sensors



Dimensions with POT



General Features

Max. load	3,500N (push/pull)
Max. speed at max. load	6.2mm/s
Max. speed at no load	23.5mm/s
Retracted length	≥ Stroke + 112mm
IP rating	IP66
Certificate	IEC60601-1, ES60601-1, IEC60601-1-2, UL962, EMC
Stroke	20~600mm

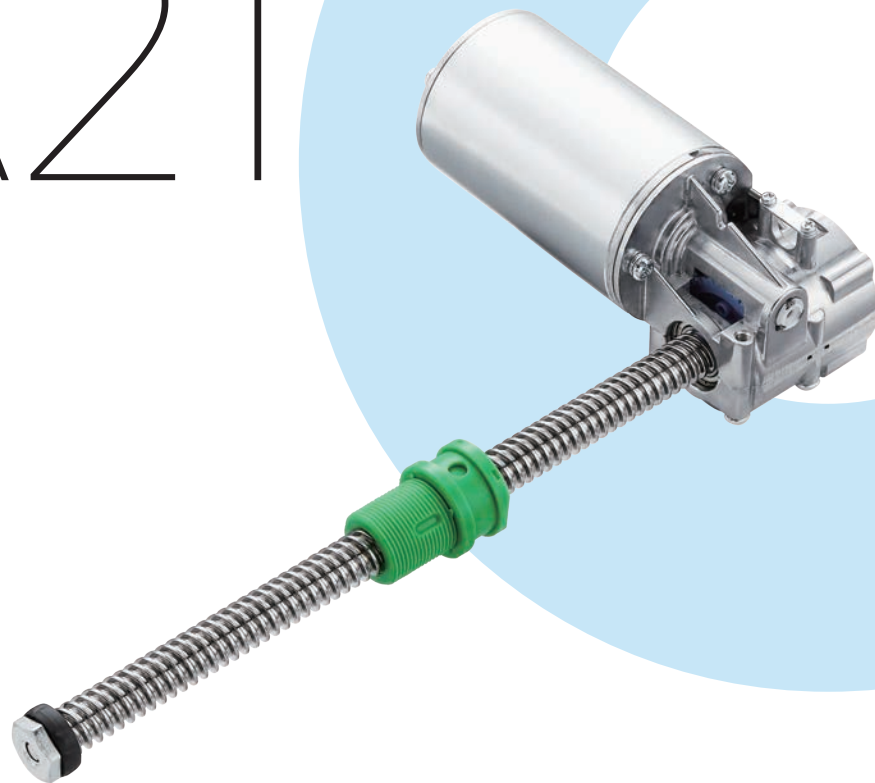
Options	POT, Hall sensor(s)
Voltage	12/24/36/48V DC
Color	Silver
Operational temperature range at full performance	+5°C~+45°C

With very low noise, small size for easy installation

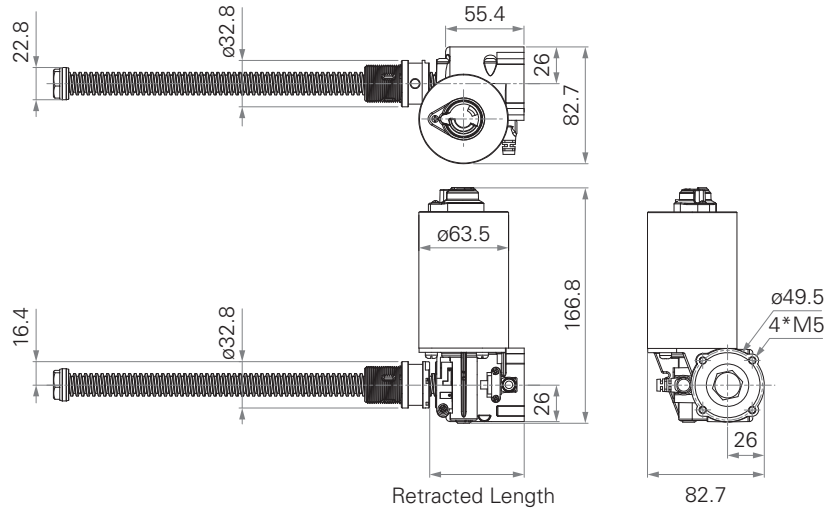
Suitable for patient hoist application

TA21

series



Standard Dimension (mm)



General Features

Max. load	10,000N (push); 6,000N (pull)
Max. speed at max. load	6.3mm/s
Max. speed at no load	24.7mm/s
Retracted length	≥ 67mm
Certificate	UL962
Stroke	25~400mm

Options

Safety nut, Hall / Reed sensor(s)

Voltage

24V DC, 24V DC (UL)

Color

Black or grey

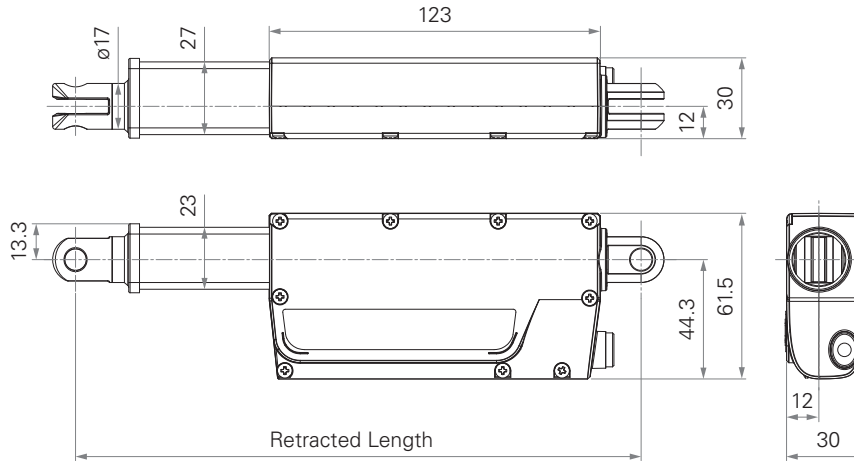
High design flexibility

TA38

series



Standard Dimension (mm)



General Features

Max. load	1,500N (push/pull)	Stroke	20~200mm
Max. speed at max. load	7.9mm/s	Options	Hall sensors
Max. speed at no load	12.5mm.s	Voltage	24V DC, 12/24V DC (PTC)
Retracted length	≥ 160mm	Color	Black or grey
IP rating	IP66	Operational temperature range	+5°C~+45°C

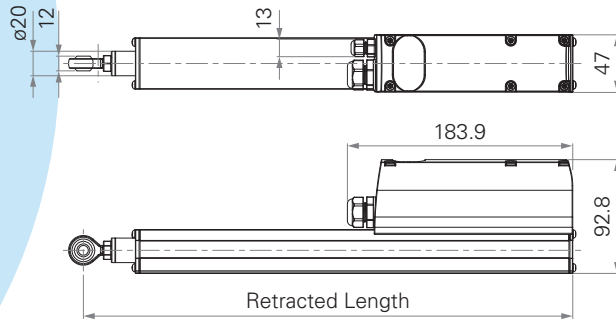
VN1

series

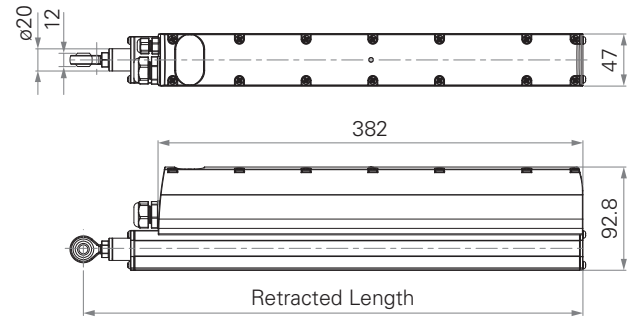


Standard Dimension (mm)

Dimensions with DC Voltage



Dimensions with AC Voltage



General Features

Max. load	3,500N (push/pull)
Max. speed at max. load	4.2mm/s
Max. speed at no load	10.4mm/s
Retracted length	≥ 217mm (DC version) ≥ 437mm (AC version) *upon the front attachment
IP rating	IP66
Stroke	20~500mm

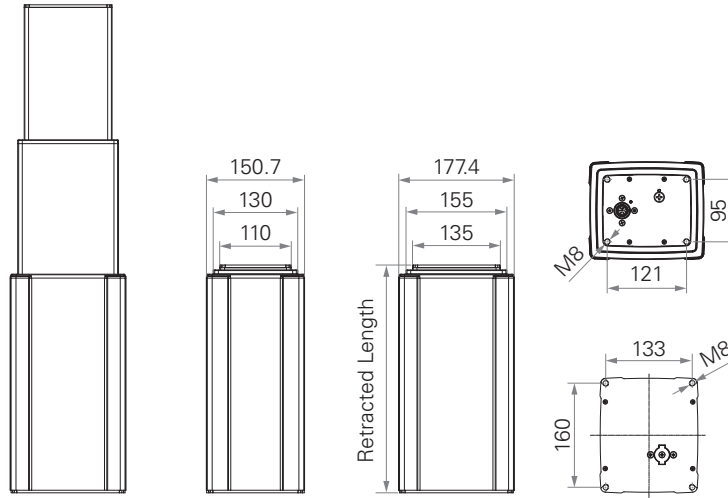
Options	Hall sensors, safety nut, window seal mechanism
Voltage	12/24V DC, 100~240V AC
Color	Black, grey
Operational temperature range	-15°C~+50°C
Operational temperature range at full performance	+5°C~+45°C

TL3

series



Standard Dimension (mm)



General Features

Max. load & self - locking force	4,000N (push)
Max. dynamic bending moment	1,000Nm
Max. static bending moment	2,000Nm
Max. speed at max. load	13.7mm/s
Max. speed at no load	39mm/s
Retracted length	$\geq \text{Stroke}/2 + 150\text{mm}$
IP rating	IPX6

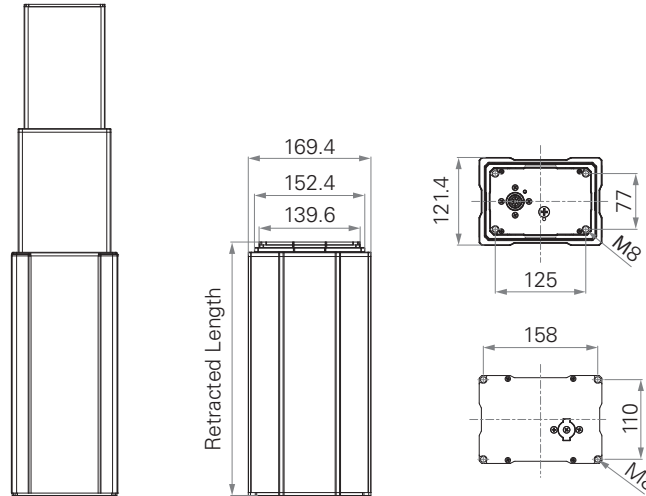
Dimension of outer tube	3-stage, 177.4*150.7mm rectangular
Stroke	250~1200mm
Certificate	IEC60601-1, EMC
Options	POT, Hall sensor(s), direct cut system
Operational temperature range	+5°C~+45°C

TL17

series



Standard Dimension (mm)



General Features

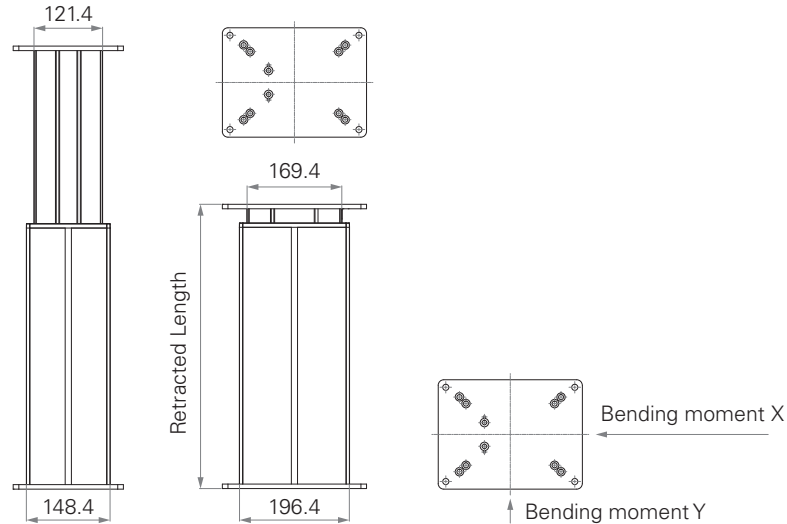
Max. load	2,000N (push)	Dimension of outer tube	3-stage, 169.4*121.4mm rectangular
Max. dynamic bending moment	250Nm	Stroke	250~1200mm
Max. static bending moment	500Nm	Certificate	IEC60601-1, ES60601-1, IEC60601-1-2
Max. speed at max. load	11.5mm/s	Options	Hall sensor(s)
Max. speed at no load	41mm/s	Color	Silver, black
Retracted length	$\geq \text{Stroke}/2 + 150\text{mm}$	Operational temperature range	+5°C~+45°C
IP rating	IPX6		

TL18

series



Standard Dimension (mm)



General Features

Max. load & self - locking force	4,500N (push)
Max. dynamic bending moment	250Nm
Max. static bending moment	500Nm
Max. speed at max. load	6.6mm/s
Max. speed at no load	45mm/s
Retracted length	\geq Stroke + 147mm
IP rating	IPX4

Dimension of outer tube	2-stage, 196.4*148.4mm rectangular
Stroke	100~700mm
Certificate	IEC60601-1, ES60601-1, IEC60601-1-2, UL73, EMC
Options	Hall sensor(s), cable exit from top / bottom side, direct cut system
Operational temperature range	+5°C~+45°C

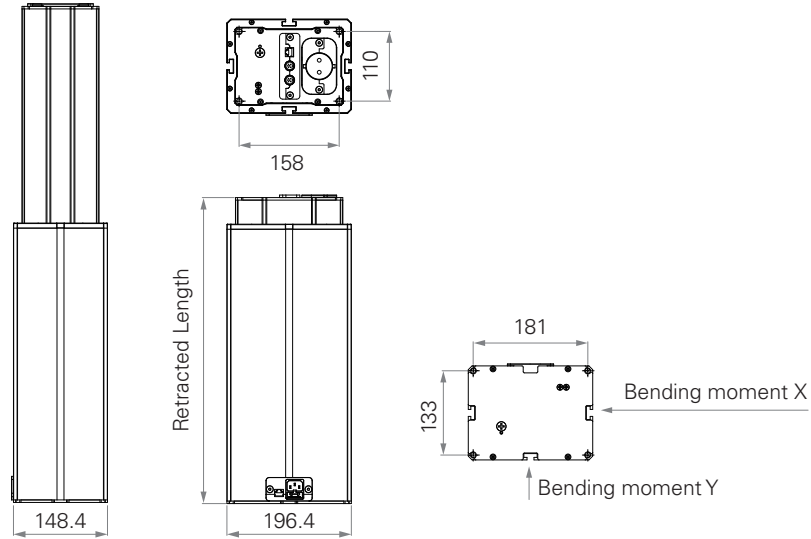
TL18

AC

series



Standard Dimension (mm)

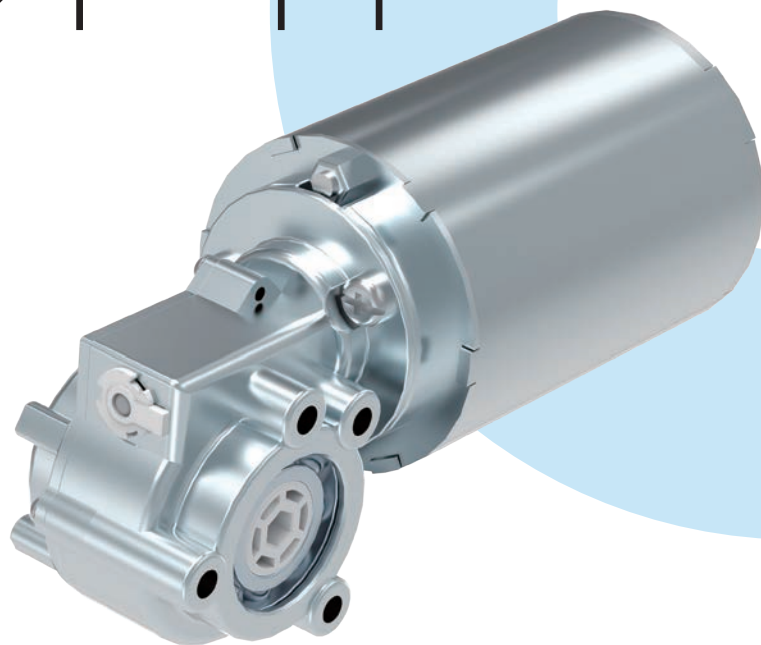


General Features

Max. load & self- locking force	4,500N (push)	Dimension of outer tube	2-stage, 196.4*148.4mm rectangular
Max. dynamic bending moment	250Nm	Stroke	200~700mm
Max. static bending moment	500Nm	Options	AC cable exit from top end, top side; Ethernet socket
Max. speed at max. load	6.6mm/s	Operational temperature range	+5°C~+45°C
Max. speed at no load	45mm/s		
Retracted length	≥ Stroke + 183mm		

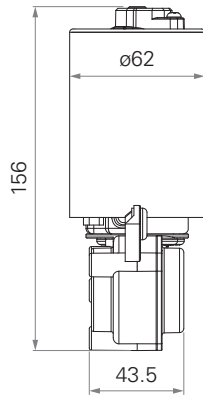
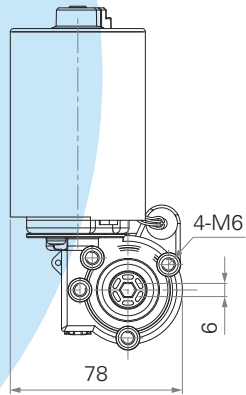
TGM1

series

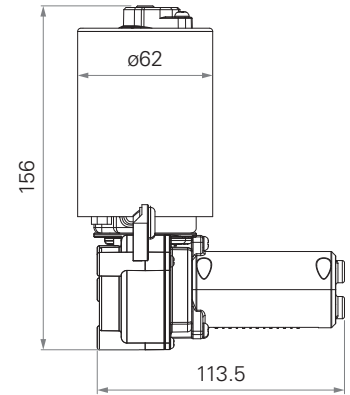
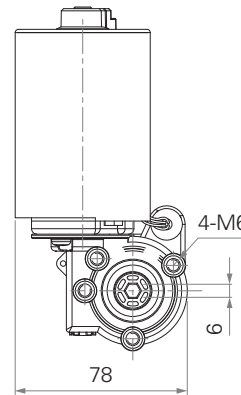


Standard Dimension (mm)

Without TES2



With TES2



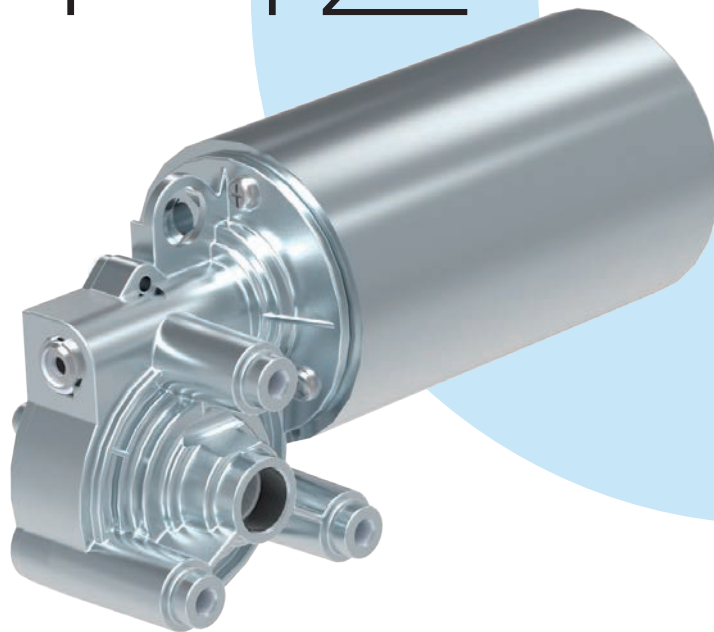
General Features

Max. rated torque	7.4Nm
Max. speed at max. load	72RPM ($\pm 5\%$)
Max. speed at no load	262.5RPM ($\pm 5\%$)
Certificate	UL962
Options	Hall sensors

Voltage	12, 24V DC or 24V DC (PTC)
Operational temperature range at full performance	+5°C~+45°C
	Hexagon hole for the shaft by 6 or 9.1mm diameter
	Low noise

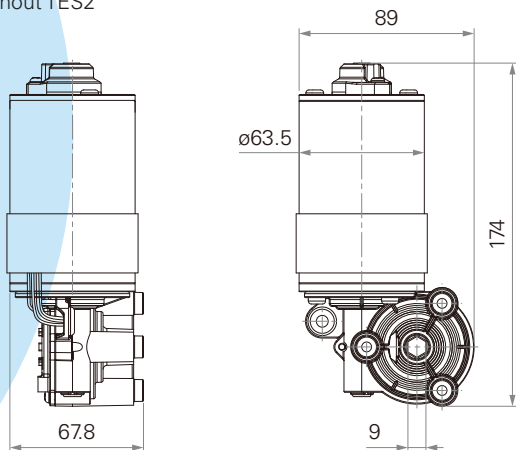
TGM2

series

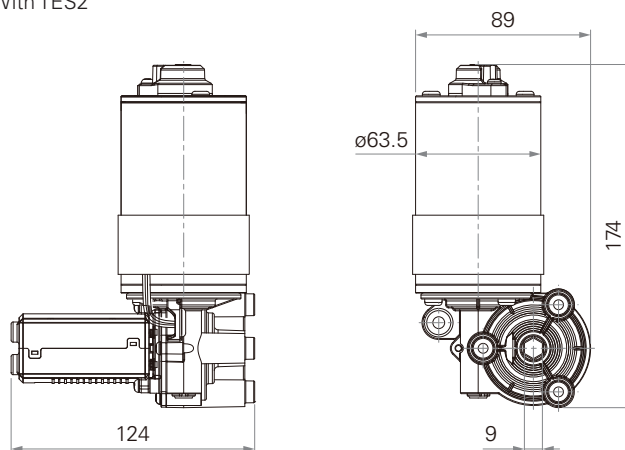


Standard Dimension (mm)

Without TES2



With TES2



General Features

Max. rated torque

18.3Nm

Max. speed at max. load

51RPM ($\pm 5\%$)

Max. speed at no load

108RPM ($\pm 5\%$)

Options

Hall sensors

Voltage

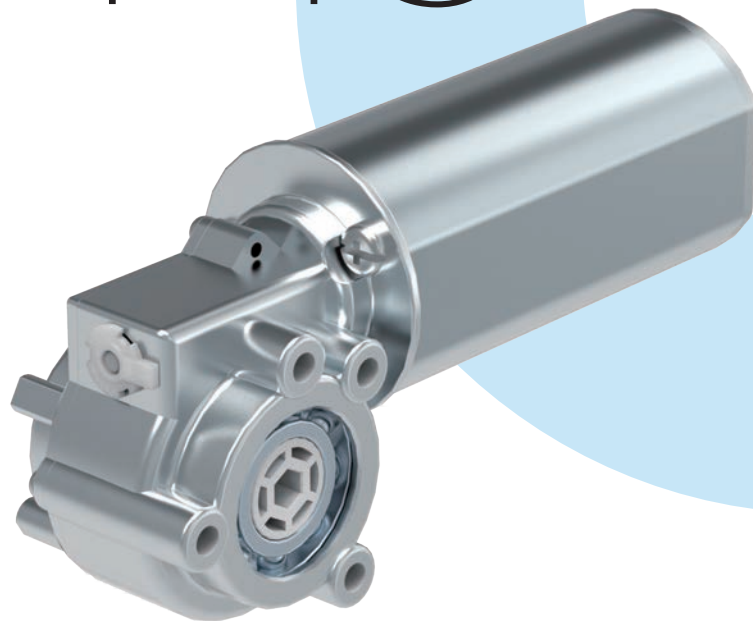
12V DC or 24V DC
(thermal protector)

Hexagon hole for the shaft by 9mm diameter

Low noise

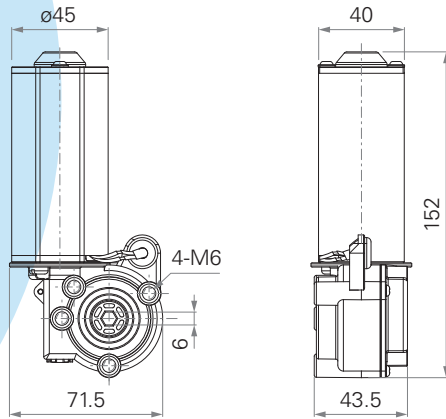
TGM3

series

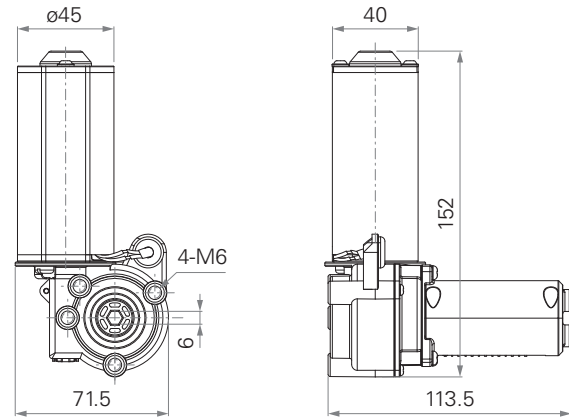


Standard Dimension (mm)

Without TES2



With TES2



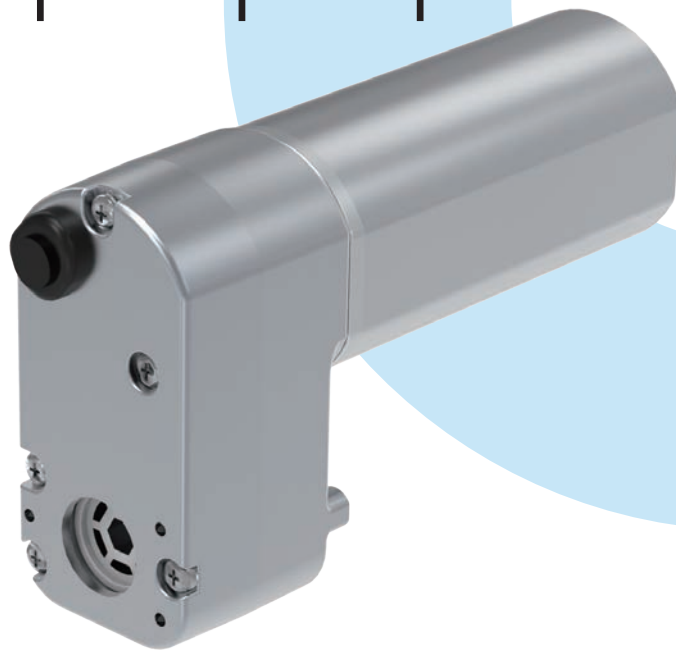
General Features

Max. rated torque	4.6Nm
Max. speed at max. load	61RPM ($\pm 5\%$)
Max. speed at no load	259RPM ($\pm 5\%$)
Options	Hall sensors

Voltage	24V DC
Operational temperature range at full performance	+5°C~+45°C
	Hexagon hole for the shaft by 6mm diameter
	Low noise

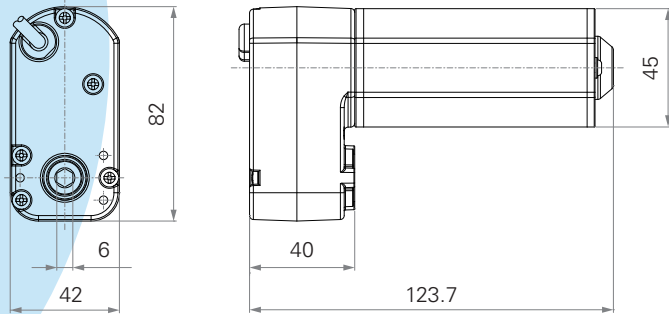
TGM4

series

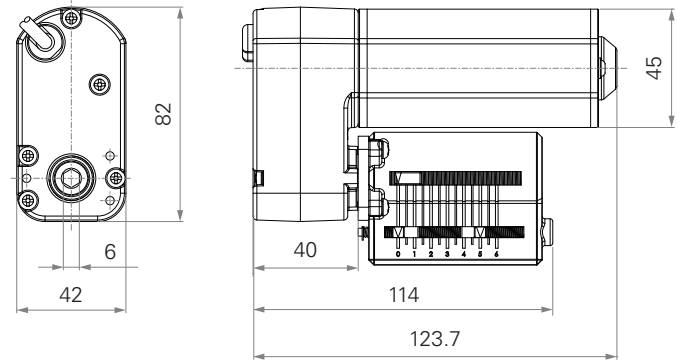


Standard Dimension (mm)

Without TES2



With TES2



General Features

Max. rated torque

6Nm

Max. speed at max. load

98RPM ($\pm 5\%$)

Max. speed at no load

219RPM ($\pm 5\%$)

Options

Hall sensors

Voltage

24V DC

Operational temperature range at full performance

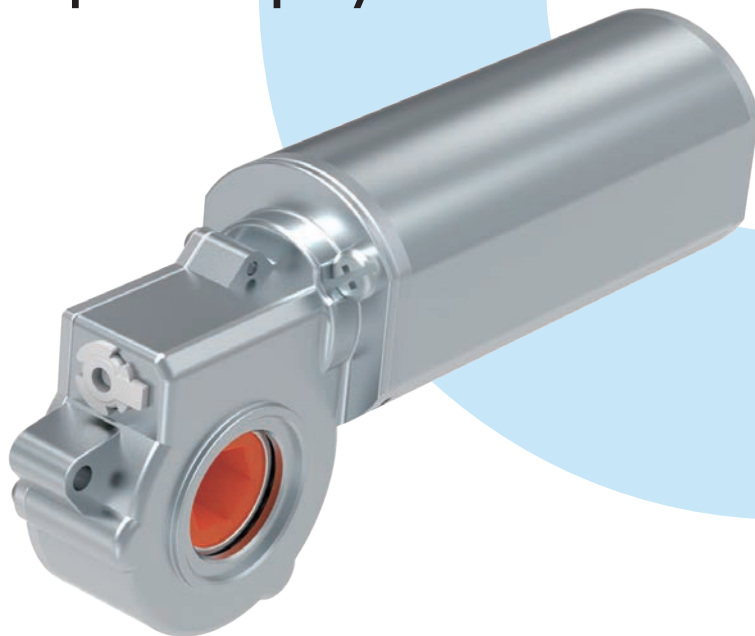
+5°C~+45°C

Hexagon hole for the shaft by 6mm diameter

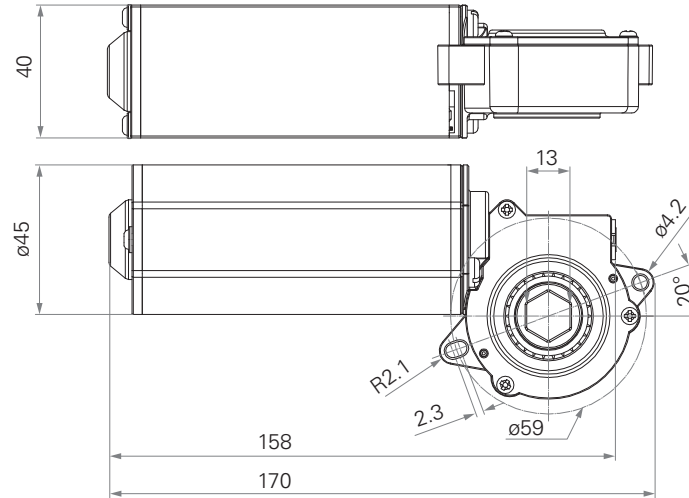
Low noise

TGM7

series



Standard Dimension (mm)



General Features

Max. rated torque

7.2Nm

Max. speed at max. load

78RPM (±5%)

Max. speed at no load

355RPM (±5%)

Options

Hall sensors

Voltage

24V DC

Operational temperature range at full performance

+5°C~+45°C

Low noise

Terms of Use

The user is responsible for determining the suitability of TiMOTION products for a specific application. TiMOTION takes great care in providing accurate and up-to-date information on its products. However, due to continuous development, frequent modifications and changes to products may occur without prior notice. It is for this reason that TiMOTION cannot guarantee the correct and actual status of said information on its products, nor can it guarantee the availability of any particular product.

Therefore, TiMOTION reserves the right to discontinue the sale of any product displayed on its website or listed in its catalogues or other written material produced by TiMOTION.

For the most accurate and up-to-date information on our products, please visit TiMOTION's website.

www.timotion.com



Every Day is Earth Day

TiMOTION uses FSC certified paper in order to help care for our forests, as well as the people and wildlife who call them home.



Taiwan & China

sales.tw@timotion.com
tel 886 2 2219 6633

Japan

sales.jp@timotion.com
tel 81 6 6713 1188

Korea

sales@timotion.co.kr
tel 82 31 745 1060

Australia

sales.tw@timotion.com
tel 61 3 8725 0331

Europe

sales.eu@timotion.com
tel 33 (0)1 74 82 50 51

USA

sales.us@timotion.com
tel (855)235 1424

Latin America

sales.la@timotion.com
tel 55 (11) 5081 5011



For the latest
product information

Updated: Aug 2020



Custom Designed
for Height
Adjustable Solutions

ERGO MOTION



99%

of TiMOTION's customer application requirements can be solved by our experienced personnel providing highly customized solutions.

101%

TiMOTION guarantees complete customer satisfaction by providing a competitive packaged actuator solution coupled with a wide range of high quality products, global service networks and "on demand" R&D resources.

TEK01 series

Original Preassembled Desk Frame

Maximum Load*

100kg or 120kg

Constant Speed*

31~ 40mm/s

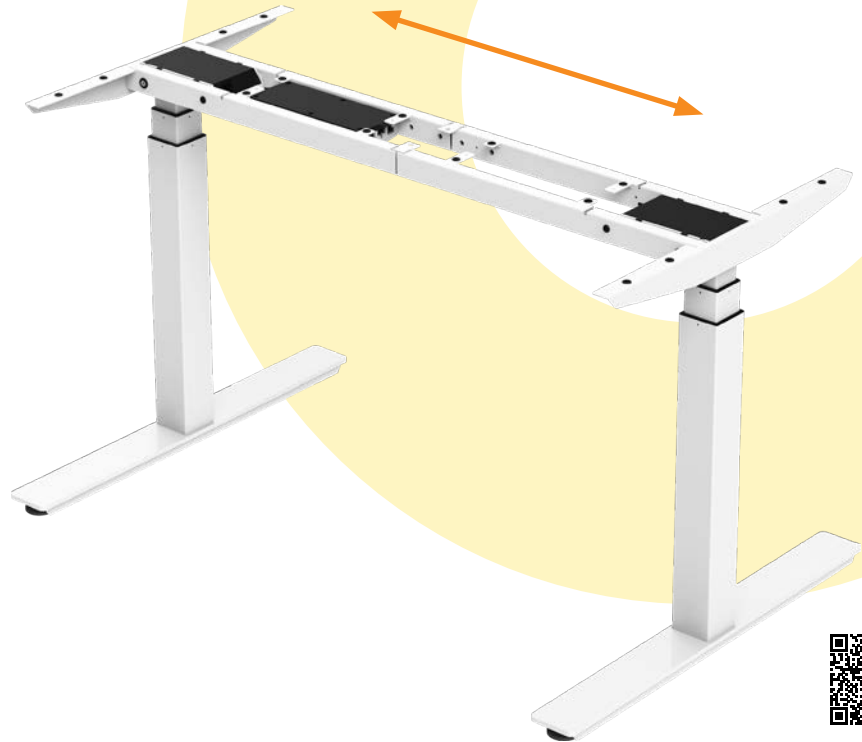
Frame Height

3 stage column : 630~1280mm
3 stage column (M) : 600~1260mm
3 stage column (S) : 560~1220mm
2 stage column : 680~1180mm

Frame Width

1050~1850mm

*It varies upon the lifting column model



TEK05

series

Innovative Single Motor Desk Frame

Maximum Load

90kg

Constant Speed

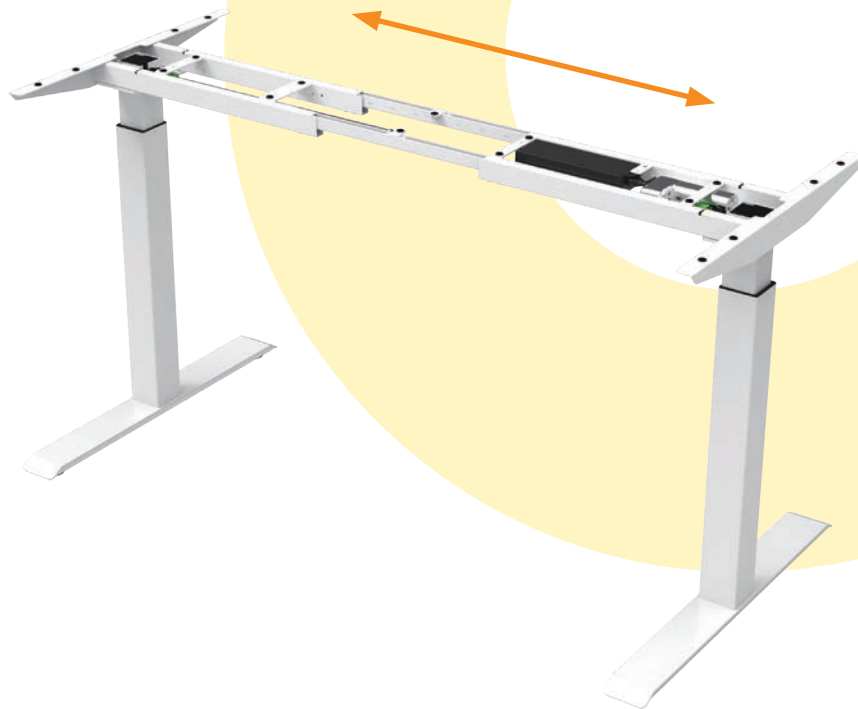
2 stage column: 33mm/s

Frame Height

2 stage column: 680~1180mm

Frame Width

1050~1600mm



TEK21

series

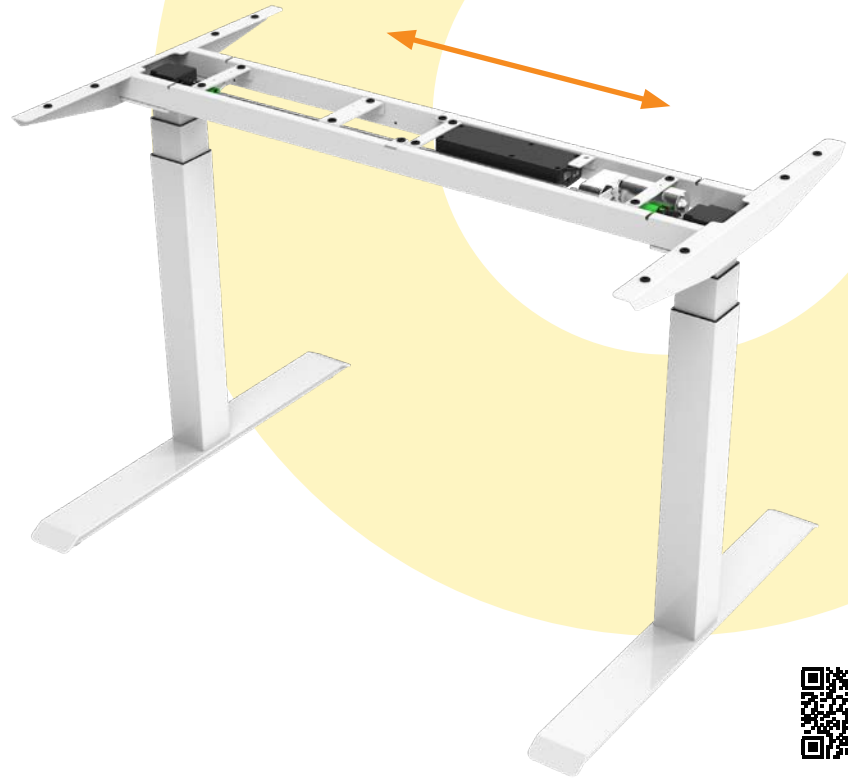
Three Stage Single Motor Desk Frame

Maximum Load
80kg

Constant Speed
3 stage column: 33mm/s

Frame Height
3 stage column: 630~1280mm

Frame Width
1050~1600mm



TEK08

series

Manually Operated Desk Frame

Maximum Load

80kg

Lifting Ratio

3mm/ turn

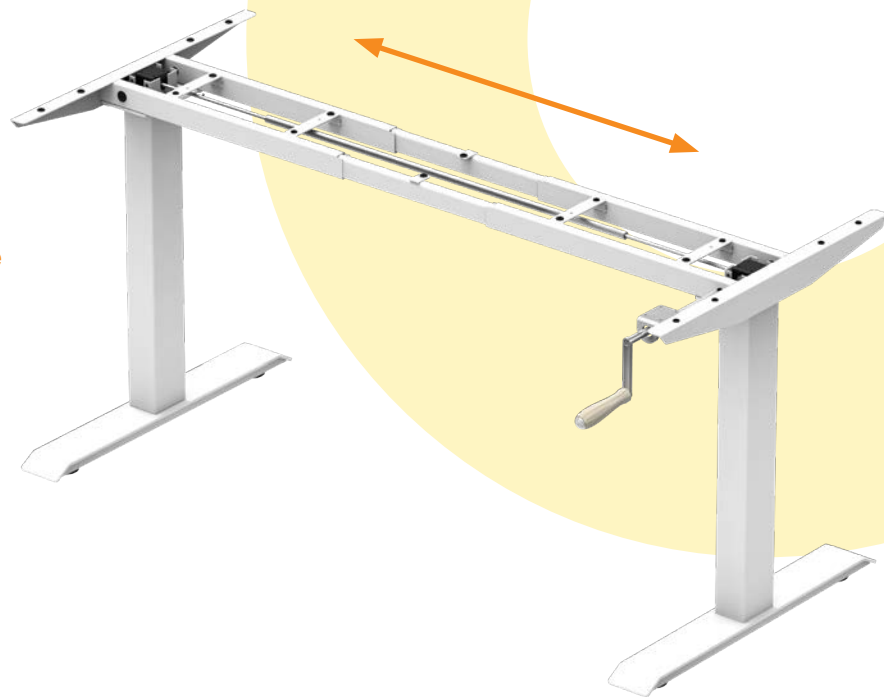
9mm/ turn

Frame Height

2 stage column: 680~1130mm

Frame Width

1050~1600mm



TEK02

series

L Shaped Three Leg Desk Frame

Maximum Load

120kg or 150kg

Constant Speed

31~ 40mm/s

*It varies upon the lifting column model

Frame Height

3 stage column : 630~1280mm

3 stage column (M) : 600~1260mm

3 stage column (S) : 560~1220mm

2 stage column : 680~1180mm

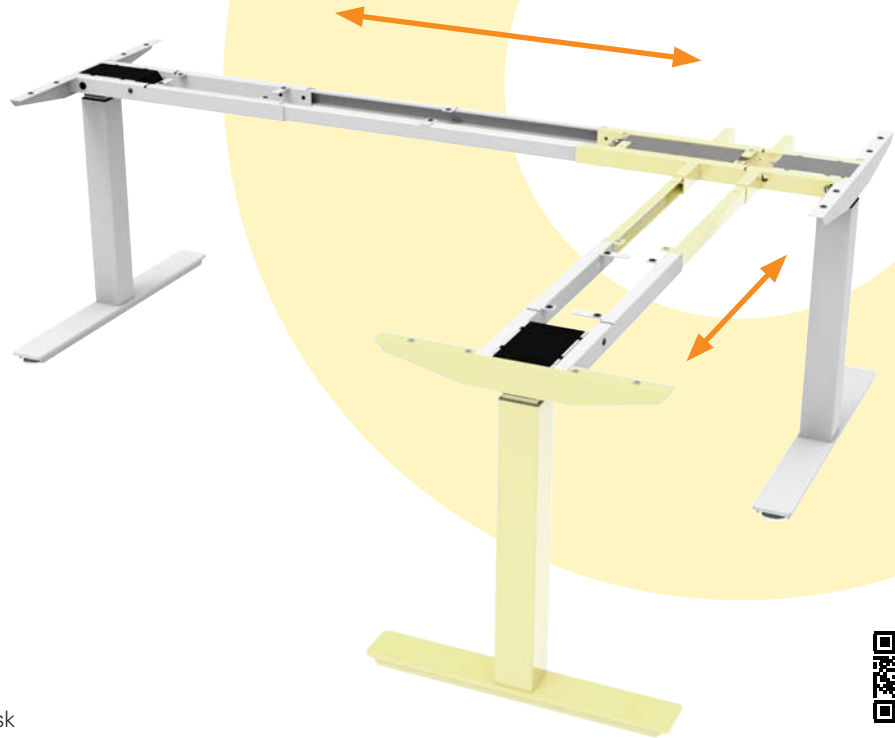
Frame Width

Front : 1165~1965mm

Side-Long : 1165-1570mm

Side-Short : 1045-1370mm

Modular design - Easily change the TEK01 rectangular desk frame into the L shaped desk



TEK09

series

120° Three Leg Desk Frame

Maximum Load

120kg or 150kg

Constant Speed

31~ 40mm/s

*It varies upon the lifting column model

Frame Height

3 stage column: 630~1280mm

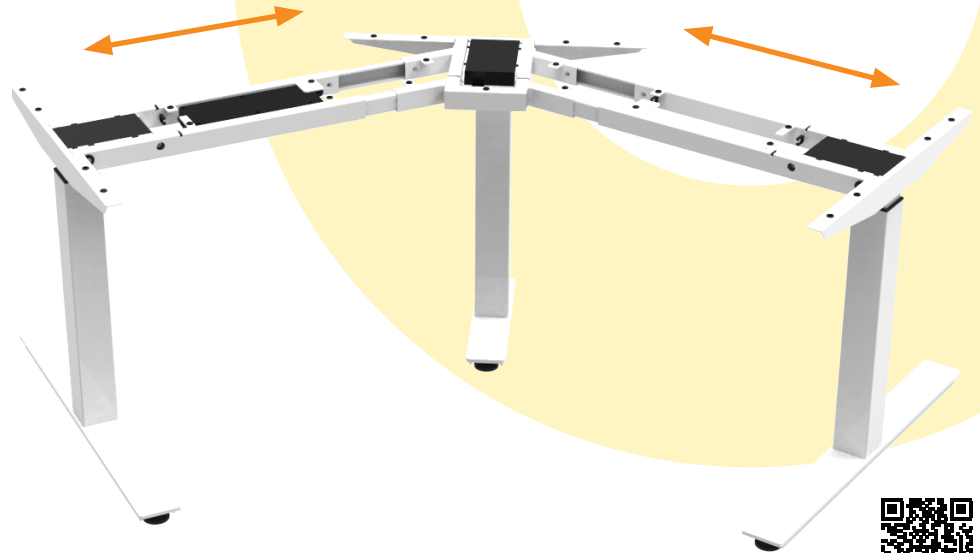
3 stage column (M) : 600~1260mm

3 stage column (S) : 560~1220mm

2 stage column: 680~1180mm

Frame Width (one side)

1045~1240mm



TEK12

series

Meeting Table Desk Frame

Maximum Load

120kg or 150kg

Constant Speed

31~ 40mm/s

*It varies upon the lifting column model

Frame Height

3 stage column: 630~1280mm

3 stage column (M) : 600~1260mm

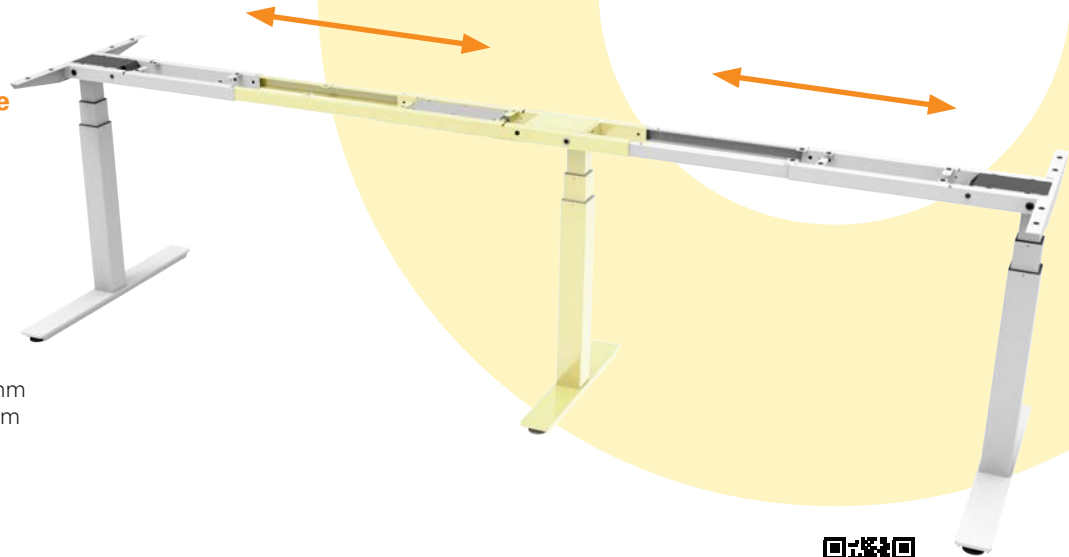
3 stage column (S) : 560~1220mm

2 stage column: 680~1180mm

Frame Width

2260~3460mm

Modular design – Easily change the TEK01 rectangular desk frame into the three leg conference table configuration



TEK03

series

Face-to-Face Modular Bench Solution

Maximum Load*

100kg or 120kg (per frame)

Constant Speed*

31~ 40mm/s

Frame Height

3 stage column : 630~1280mm

3 stage column (M) : 600~1260mm

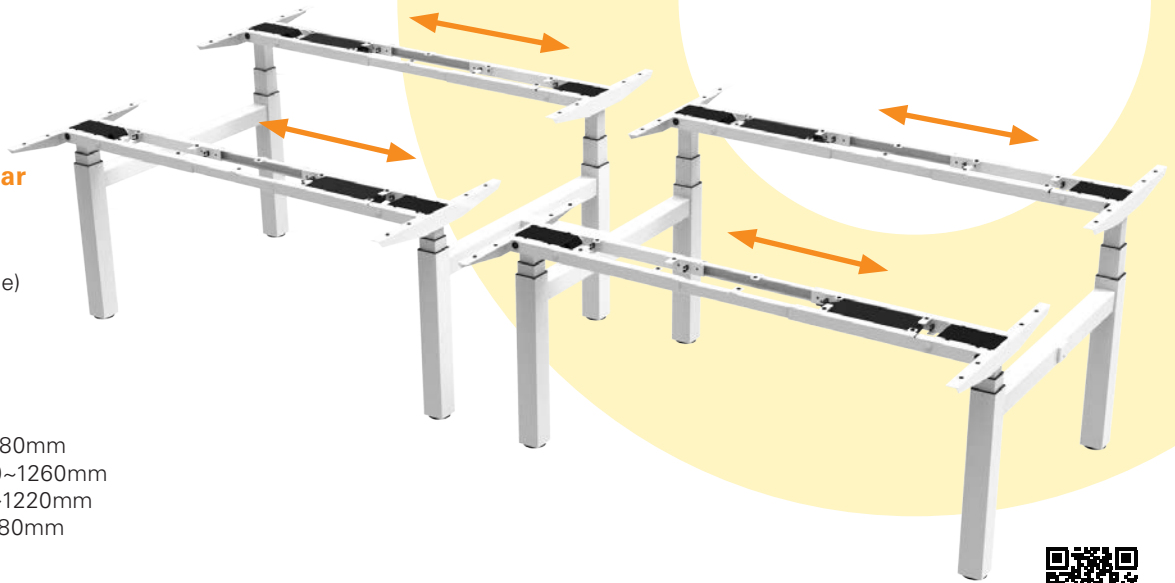
3 stage column (S) : 560~1220mm

2 stage column : 680~1180mm

Frame Width

1050~1850mm

*It varies upon the lifting column model



TEK17

series

Single Column Desk Frame

Maximum Load

70kg

Constant Speed

31~ 40mm/s

*It varies upon the lifting column model

Frame Height

3 stage column : 630~1280mm

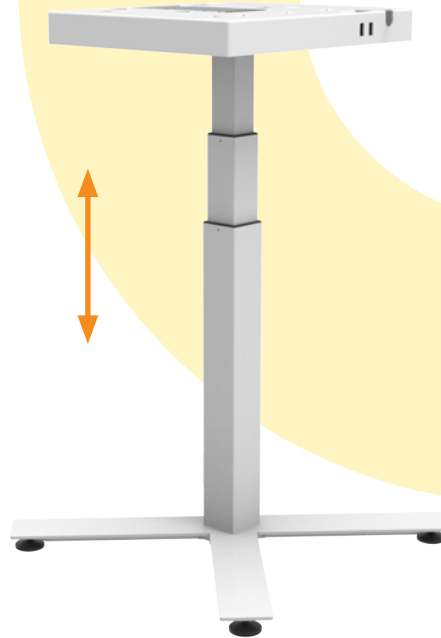
3 stage column (M) : 600~1260mm

3 stage column (S) : 560~1220mm

2 stage column : 680~1180mm

Top Frame Size

450*380mm



TEK19

series

Single Column Desk Frame

Maximum Load

80kg

Constant Speed

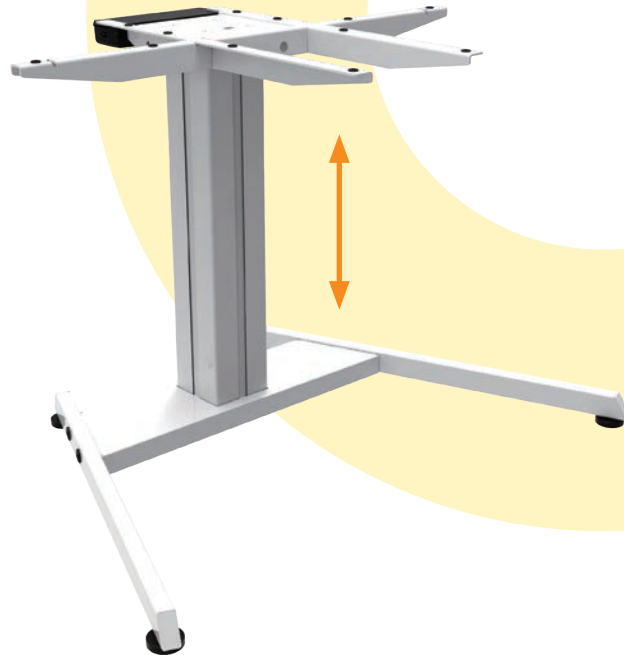
2 stage column: 33mm/s

Frame Height

2 stage column: 675~1175mm

Frame Width

800*580mm



TEK23

series

Single Crossbar Desk Frame

Maximum Load

100kg

Constant Speed

31 or 38mm/s

*It varies upon the lifting column model

Frame Height

3 stage column: 630~1280mm

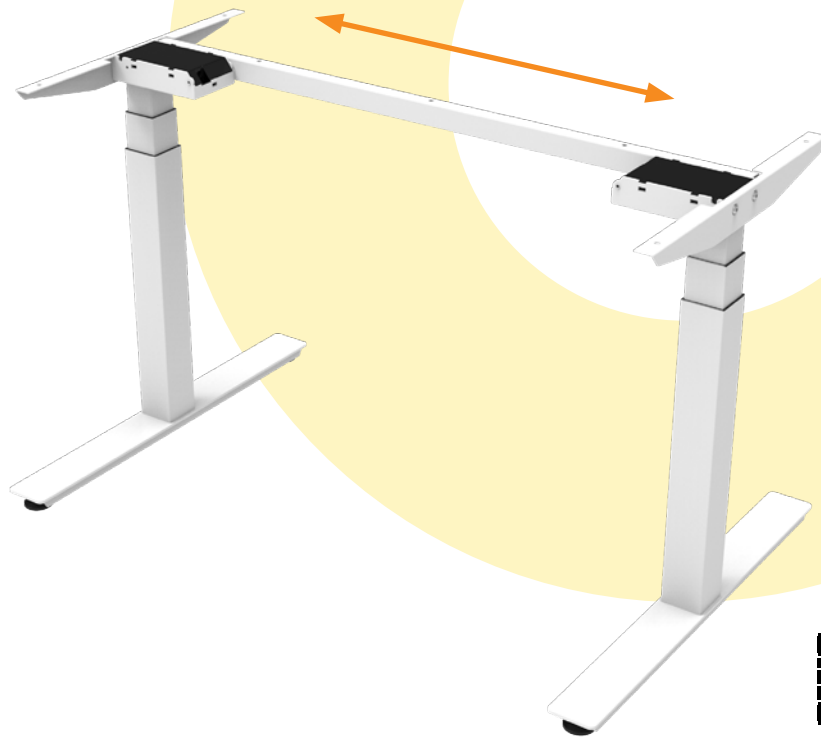
3 stage column (M) : 600~1260mm

3 stage column (S) : 560~1220mm

2 stage column: 680~1180mm

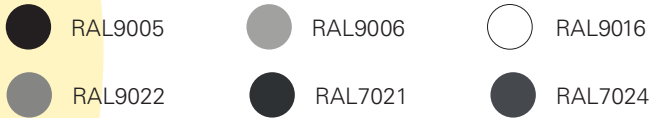
Frame Width

1160mm



Colors (RAL Classic)

Standard color for TL series

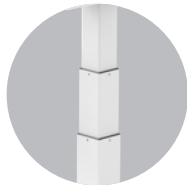
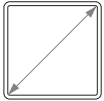


*For more color options, please consult your sales representative.

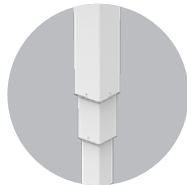


Three stage lifting columns

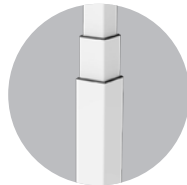
Square



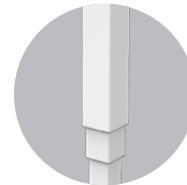
TL4 / TL4S



TL7

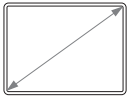


TL20

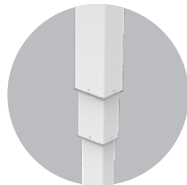


TL40

Rectangular



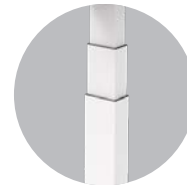
TL10



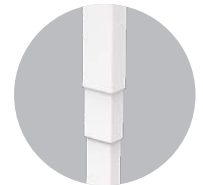
TL12



TL31S

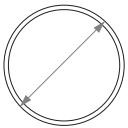


TL33S

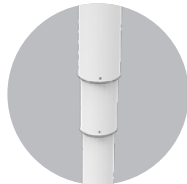


TL33SR

Round



TL9



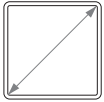
TL11

Technical data

Model	Size (mm)	Max. rated load (kg)	Max. speed at no load (mm/s)	Stroke (mm)	Min. installation dimension (mm)
TL4	70 x 70	80	58	650 / 660 (M / S)	590 / 560 (M) / 520 (S)
TL4S	70 x 70	60	55	650 / 660 (M / S)	590 / 560 (M) / 520 (S)
TL7	70 x 70	80	58	650 / 660 (M / S)	590 / 560 (M) / 520 (S)
TL20	70 x 70	70	45	650 / 660 (M / S)	590 / 560 (M) / 520 (S)
TL40	70 x 70	70	45	650	590
TL10	80 x 60	80	58	650 / 660 (M / S)	590 / 560 (M) / 520 (S)
TL12	80 x 60	80	58	650 / 660 (M / S)	590 / 560 (M) / 520 (S)
TL31S	90 x 60	60	55	650 / 660 (M / S)	590 / 560 (M) / 520 (S)
TL33S	83 x 53	60	55	650 / 660 (M / S)	590 / 560 (M) / 520 (S)
TL33SR	83 x 53	60	55	650 / 660 (M / S)	590 / 560 (M) / 520 (S)
TL9	ø70	80	58	650 / 660 (M)	590 / 560 (M)
TL11	ø70	80	58	650 / 660 (M)	590 / 560 (M)

Two stage lifting columns

Square

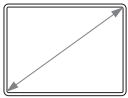


TL13 / TL13S

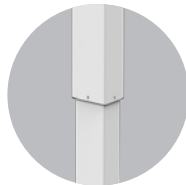


TL28

Rectangular



TL15



TL26

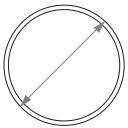


TL30S



TL32S

Round



TL14



TL29

Technical data

Model	Size (mm)	Max. rated load (kg)	Max. speed at no load (mm/s)	Stroke (mm)	Min. installation dimension (mm)
TL13	70 x 70	80	46	500	645
TL13S	70 x 70	60	40	500	645
TL28	70 x 70	80	46	500	645
TL15	80 x 60	80	46	500	645
TL26	80 x 60	80	46	500	645
TL30S	90 x 60	60	40	500	645
TL32S	83 x 53	60	40	500	645
TL14	ø70	80	46	500	645
TL29	ø70	80	46	500	645

Control Boxes

0.1W
standby power
consumption 

TiMOTION offers a wide range of control boxes and controls that can be used with Ergo Motion motors.

Control boxes have the options of 0.1W stand-by consumption power and various safety features. A built-in SMPS transformer is also included within each control box.



TC11 / TC11P Series

- Single motor support
- TC11P supports t-touch built-in, charging accessory and external battery



TC15 / TC15P Series

- Two motor support
- TC15P supports t-touch or Bluetooth built-in, charging accessory and external battery



TC16 / TC16P Series

- Three motor support
- TC16P supports t-touch or Bluetooth built-in, charging accessory



TC18P Series

- Two motor support
- Supports t-touch or Bluetooth built-in, charging accessory and external battery



TC22 Series

- Four motor support
- Supports t-touch or Bluetooth built-in, charging accessory and external battery



Hand Controls



TH14



TH37/TDH15



TFH8/TDH16



TDH8



TDH8D



TDH3



TDH5 / TDH5PR



TDH6 / TDH6PR



TDH8P



TDH11P

Hand Controls



TFH21



TDH12P



TDH13P



TDH17



TDH18P



TDH1



TDH2



TDH4



TDH9P



Accessories

for TEK series



TFA1



TFA3



TWC



TCS1



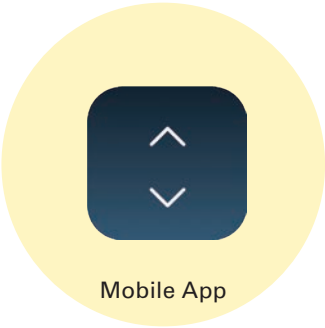
TWD1



TBB9



Convertible Cover



Mobile App



Foot Castors



Accessories

Cable Management Solution



End Pipe for Sliding Top

The End Pipes for the Sliding Tabletop Track system provide easy access to the cable tray by allowing the table top to slide backwards and forwards.



Cable Tray

The Cable Tray manages the cables for electronic items placed on the work surface (e.g. laptops, monitors, lamps)



Safety Lock

Used with the sliding end pipes to prevent accidental movement of the tabletop.



Cable Tray for TEK03

The Cable Tray manages the cables for electronic items placed on the work surface (e.g. laptops, monitors, lamps)

Alternatives

for Height Adjustable Stands



TL5



TL18



TL19



TL25



TVL3

Technical data for columns without motor housings

Model	Max. rated load (N)	Max. speed at no load (mm/s)	Stroke (mm)	Min. installation dimension (mm)
TL5	800	32 or 36	675	560
TL18	4500	45	100~700	Stroke + 147
TL19	800	47	500	645
TL25	500	64	500	860
TVL3	600	22 (constant)	650 (S) / 780 (M) / 914 (L)	570 (S) / 685 (M) / 795 (L)

Terms of Use

The user is responsible for determining the suitability of TiMOTION products for a specific application. TiMOTION takes great care in providing accurate and up-to-date information on its products. However, due to continuous development, frequent modifications and changes to products may occur without prior notice. It is for this reason that TiMOTION cannot guarantee the correct and actual status of said information on its products, nor can it guarantee the availability of any particular product.

Therefore, TiMOTION reserves the right to discontinue the sale of any product displayed on its website or listed in its catalogues or other written material produced by TiMOTION.

For the most accurate and up-to-date information on our products, please refer to TiMOTION's website at

www.timotion.com



Every Day is Earth Day

TiMOTION uses FSC certified paper in order to help care for our forests, as well as the people and wildlife who call them home.



Taiwan & China

sales.tw@timotion.com
tel 886 2 2219 6633

Europe

sales.eu@timotion.com
tel 33 (0)1 74 82 50 51

Japan

sales.jp@timotion.com
tel 81 6 6713 1188

USA

sales.us@timotion.com
tel (855)235 1424

Korea

sales@timotion.co.kr
tel 82 31 745 1060

Latin America

sales.la@timotion.com
tel 55 (11) 5081 5011

Europe

ADJUSTME sourcing ApS
+45 40 95 80 50
info@adjustme.eu

Australia

sales.tw@timotion.com
tel tel 61 427 255 624



For latest
product information

Updated: Mar 2020



Choose TiMOTION for
Flexibility, Customized Products,
and Tailor-Made Services

CARE MOTION



99%

of TiMOTION's customer application requirements can be solved by our experienced personnel providing highly customized solutions.

101%

TiMOTION guarantees complete customer satisfaction by providing a competitive packaged actuator solution coupled with a wide range of high-quality products, global service networks and "on-demand" R&D resources.

Linear Actuators

TA series



TA1



Max. load
10,000N (push)
4,000N (pull)

Max. speed at max. load
3.2mm/s

Max. speed at no load
39mm/s

Retracted length
≥ Stroke + 163mm

IP rating
IP66W



TA7



Max. load
10,000N (push)
4,000N (pull)

Max. speed at max. load
3.2mm/s

Max. speed at no load
39mm/s

Retracted length
≥ Stroke + 171mm

IP rating
IP66W



TA10



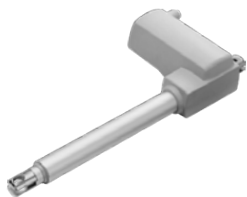
Max. load
6,000N (push)
4,000N (pull)

Max. speed at max. load
4.2mm/s

Max. speed at no load
14.5mm/s

Retracted length
≥ Stroke + 188mm

IP rating
IP66



TA11



Max. load
1,500N (push/pull)

Max. speed at max. load
10.5mm/s

Max. speed at no load
13.1mm/s

Retracted length
≥ Stroke + 155mm

IP rating
IP66D



TA12



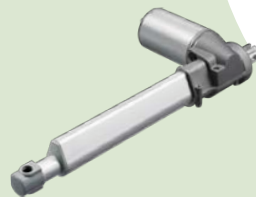
Max. load
12,000N (push)
6,000N (pull)

Max. speed at max. load
4mm/s

Max. speed at no load
57.3mm/s

Retracted length
≥ Stroke + 210mm

IP rating
IP66W



TA13



Max. load
10,000N (push)
5,500N (pull)

Max. speed at max. load
4.5mm/s

Max. speed at no load
49.4mm/s

Retracted length
≥ Stroke + 180mm

Linear Actuators

TA series



TA15



Max. load
10,000N (push)
5,500N (pull)

Max. speed at max. load
4.5mm/s

Max. speed at no load
14.4mm/s

Retracted length
 $\geq \text{Stroke} + 210\text{mm}$

IP rating
IP66



TA16



Max. load
3,500N (push/pull)

Max. speed at max. load
6.2mm/s

Max. speed at no load
23.5mm/s

Retracted length
 $\geq \text{Stroke} + 112\text{mm}$

IP rating
IP66



TA19



Max. load
1,000N (push)

Max. speed at max. load
18mm/s

Max. speed at no load
64mm/s

Retracted length
 $\geq \text{Stroke}/2 + 165\text{mm}$



TA21



Max. load
10,000N (push)
6,000N (pull)

Max. speed at max. load
6.3mm/s

Max. speed at no load
24.7mm/s

Retracted length
≥ 67mm



TA23



Max. load
10,000N (push)
4,000N (pull)

Max. speed at max. load
3.2mm/s

Max. speed at no load
39mm/s

Retracted length
≥ Stroke + 163mm

IP rating
IP66W



TA24



Max. load
10,000 (push)
6,000N (pull)

Max. speed at max. load
5.4mm/s

Max. speed at no load
13.9mm/s

Retracted length
≥ Stroke + 190mm

IP rating
IP66W



TA29



Max. load
6,000N (push)
4,000N (pull)

Max. speed at max. load
3.5mm/s

Max. speed at no load
30.2mm/s

Retracted length
≥ Stroke + 178mm

IP rating
IP66W

Linear Actuators

TA series



TA31



Max. load
8,000N (push)
3,000N (pull)

Max. speed at max. load
3.5mm/s

Max. speed at no load
26.6mm/s

Retracted length
≥ Stroke + 157mm

IP rating
IP66W



TA31QR



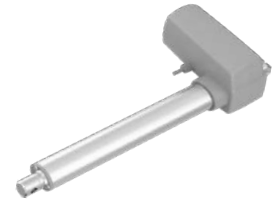
Max. load
5,000N (push)
3,000N (pull)

Max. speed at max. load
4.7mm/s

Max. speed at no load
11.2mm/s

Retracted length
≥ Stroke + 178mm

IP rating
IP66W



TA36



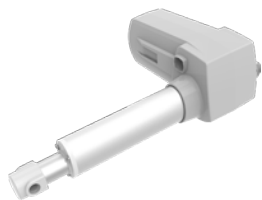
Max. load
10,000N (push)
6,000N (pull)

Max. speed at max. load
5.4mm/s

Max. speed at no load
13.9mm/s

Retracted length
≥ Stroke + 170mm

IP rating
IP66W



TA37



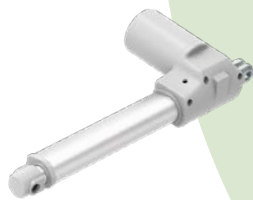
Max. load
12,000N (push)

Max. speed at max. load
5.3mm/s

Max. speed at no load
23.1mm/s

Retracted length
 \geq Stroke + 170mm

IP rating
IP66W



TA41



Max. load
8,000N (push)
4,000N (pull)

Max. speed at max. load
4.4mm/s

Max. speed at no load
39mm/s

Retracted length
 \geq Stroke + 163mm



TT1



Max. load
6,000N (push)

Max. speed at max. load
4.6mm/s

Max. speed at no load
6.8mm/s

Dimension between shaft
581mm



Gear Motors

TGM series



TGM5



Max. rated torque
18.3Nm

**Max. speed at
max. load**
88RPM ($\pm 5\%$)

**Max. speed at
no load**
117RPM ($\pm 5\%$)

IP rating
IP66

Certificate
UL962

Lifting Columns

TL series



TL3



Max. load & self-locking force
4,000N (push)

Max. dynamic bending moment
1,000Nm

Max. speed at max. load
13.7mm/s

Max. speed at no load
39mm/s

Retracted length
 $\geq \text{Stroke}/2 + 150\text{mm}$

IP rating
IPX6



TL8



Max. load
2000N (push)

Max. dynamic bending moment
500Nm

Max. speed at max. load
9.6mm/s

Max. speed at no load
32.6mm/s

Retracted length
 $\geq \text{Stroke}/2 + 150\text{mm}$

IP rating
IPX6



TL17



Max. load
2,000N (push)

Max. dynamic bending moment
250Nm

Max. speed at max. load
11.5mm/s

Max. speed at no load
41mm/s

Retracted length
 $\geq \text{Stroke}/2 + 150\text{mm}$

IP rating
IPX6



TL18



Max. load & self-locking force
4,500N (push)

Max. dynamic bending moment
250Nm

Max. speed at max. load
6.6mm/s

Max. speed at no load
45mm/s

Retracted length
≥ Stroke + 147mm



TL18AC



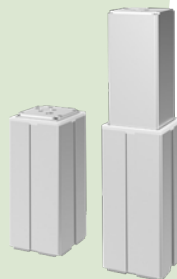
Max. load & self-locking force
4,500N (push)

Max. dynamic bending moment
250Nm

Max. speed at max. load
6.6mm/s

Max. speed at no load
45mm/s

Retracted length
≥ Stroke + 183mm



TL24



Max. load
3,300N (push)

Max. dynamic bending moment
200Nm

Max. speed at max. load
6.5mm/s

Max. speed at no load
38mm/s

Retracted length
≥ Stroke + 188mm

IP rating
IPX6



TL27



Max. load
3,300N (push)

Max. speed at max. load
6.5mm/s

Max. speed at no load
38mm/s

Retracted length
≥ 456mm (when stroke < 200mm)

Control Boxes



TC8 Series

- Number of motors: 1~7
- Number of controls: 1~3
- IP rating: IP66



TC10 Series

- Number of motors: 1~5
- Number of controls: 1~2
- Max. output: 29V DC, 5A
- IP rating: IP66
- Options: built-in battery and alarm buzzer



TC12 / TC12AC Series

- Number of motors: 1~3
- IP rating: IP54
- Options: LCD display, LED power indicator



TC14 Series

- Number of motors: 1~4
- IP rating: IP66



TC17 Series

- Number of motors: 1~4
- Max. output: 29V DC, 2A



TC20 Series

- Number of motors: 1~3
- IP rating: IP66
- Options: MCU, battery LED indicator, cable management bracket



TC21 Series

- Number of motors: 1~5
- Number of controls: 1~2
- Max. output: 8A/10A
- IP rating: IP66W



Back-Up Power



TBB2 Series

- Battery type: Lead acid, Lithium
- Capacity: 1.2Ah
- Discharging voltage: 24V DC, 1.2A



TBB4 Series

- Battery type: Lead acid
- Capacity: 1.2 or 2Ah
- Discharging voltage: 24V DC, 2A



TBB5 Series

- Battery type: Lithium iron
- Capacity: 4Ah
- Discharging voltage: 25.6V DC, 4A



TBB6 Series

- Battery type: Lead acid
- Capacity: 2.9 or 5Ah
- Discharging voltage: 24V DC, 2.9 / 5A



TBB7 Series

- Battery type: Lead acid
- Capacity: 2.9 or 5Ah
- Discharging voltage:
24V DC, 2.9/5A



Power Supplies



TP4 Series

- Transformer type: EI, toroidal or SMPS
- Input voltage: 110 / 120 / 230V AC, or 100~240V AC (SMPS)
- Max. output: 30V DC, 5A



TP6 Series

- Transformer type: SMPS
- Input voltage: 100~240V AC
- Max. output: 31.5V DC, 5A



TP7M Series

- Transformer type: SMPS
- Input voltage: 100~240V AC
- Max. output: 29V DC, 1.5A



TP8 Series

- Transformer type: SMPS
- Input voltage: 100~240V AC
- Max. output: 29V DC, 2.5A



TP9 Series

- Transformer type: SMPS
- Input voltage: 100~240V AC
- Max. output: 29V DC, 2.5A



Controls



TH2



TH7



TH10



TH12



TH21



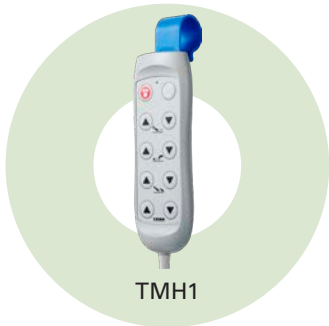
TH24



TH26



TH30



TMH1



TMH3



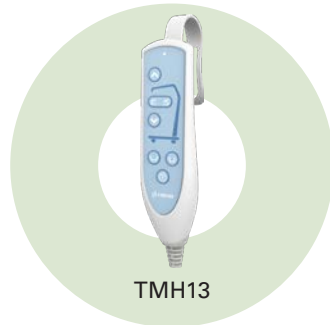
TMH5



TMH9



TMH12



TMH13

Controls



TMH15



TMH16



TMH17



TMH18



TMH19



TMH21



TNP1



TNP2



TNP3



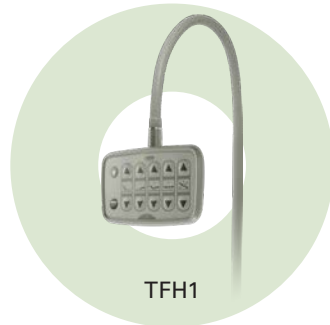
TNP4



TNP5



TNP6



TFH1



Controls



TFS



TFS2



TFS3



TFS5



TFS6



TFS7



TFS8



Accessories



TBC2
Battery Charger



TBL
Bed Bottom Light



TBL2
Bed Bottom Light



TCR
AC Cable Reel



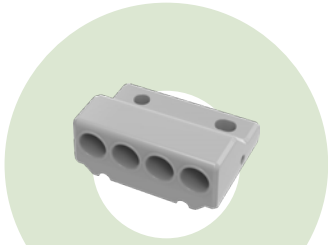
TEB
Emergency Button



TEB2
Emergency Button



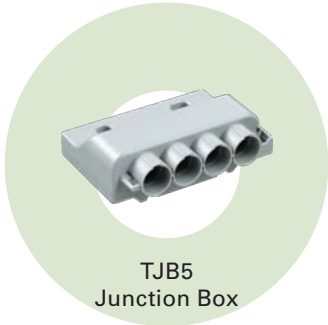
TES
External Switch



TJB2
Junction Box



TJB3
Junction Box

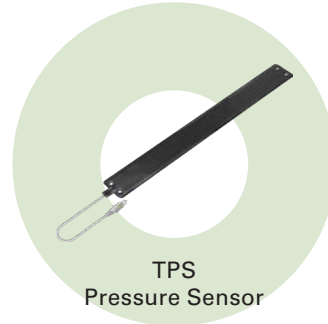


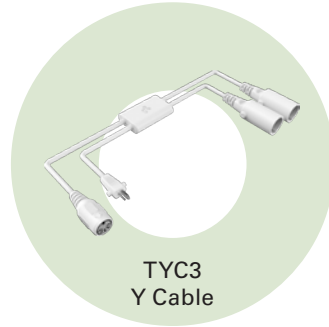
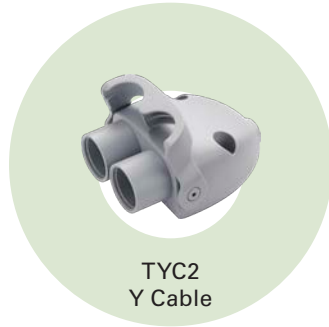
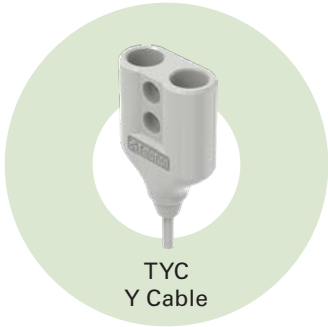
TJB5
Junction Box



TJB11
Junction Box

Accessories





Terms of Use

The user is responsible for determining the suitability of TiMOTION products for a specific application. TiMOTION takes great care in providing accurate and up-to-date information on its products. However, due to continuous development, frequent modifications and changes to products may occur without prior notice. It is for this reason that TiMOTION cannot guarantee the correct and actual status of said information on its products, nor can it guarantee the availability of any particular product.

Therefore, TiMOTION reserves the right to discontinue the sale of any product displayed on its website or listed in its catalogues or other written material produced by TiMOTION.

For the most accurate and up-to-date information on our products, please visit TiMOTION's website.

www.timotion.com



Every Day is Earth Day

TiMOTION uses FSC certificated paper in order to help care for our forests, as well as the people and wildlife who call them home.



Taiwan & China

sales.tw@timotion.com
tel 886 2 2219 6633

Japan

sales.jp@timotion.com
tel 81 6 6713 1188

Korea

sales@timotion.co.kr
tel 82 31 745 1060

Australia

sales.tw@timotion.com
tel 61 3 8725 0331

Europe

sales.eu@timotion.com
tel 33 (0)1 74 82 50 51

USA

sales.us@timotion.com
tel (855)235 1424

Latin America

sales.la@timotion.com
tel 55 (11) 5081 5011



For the latest
product information

Updated: Aug 2020